

⚠ WARNING ⚠ TO REDUCE RISK OF SERIOUS INJURY OR PROPERTY DAMAGE: READ ALL SAFETY MESSAGES AND UNDERSTAND ALL INSTRUCTIONS AND PROCEDURE NOTICES BEFORE ATTEMPTING TO INSTALL OR USE THIS PRODUCT.

⚠ CAUTION ⚠ RISK OF EYE INJURY! SAFETY GLASSES MUST BE WORN AT ALL TIMES WHILE INSTALLING OR MAINTAINING THIS PRODUCT. DO NOT USE IF DAMAGED.

⚠ CAUTION ⚠ WHEN ROUTING ELECTRICAL WIRES, ALWAYS AVOID PINCHING WIRES. ALWAYS AVOID HOT OR MOVING COMPONENTS. ALWAYS SECURE WIRES WITH WIRE TIES.



PARTS LIST

- TACTIK Winch w/ Winch Line
- Wired Remote
- Hook w/ Strap
- Fairlead
- M12 - 1.75 x 25mm Socket Head Screw (x2)
- 12mm Flat Washer (x2)
- 12mm Lock Washer (x2)
- 12mm Nut (x2)
- M10 - 1.5 x 30mm Socket Head Screw (x4)
- 10mm Flat Washer (x4)
- 10mm Lock Washer (x4)
- 10mm Square Nut (x4)

REQUIRED TOOLS

- Safety Glasses
- Safety Gloves
- Torque Wrench
- Ratchet
- 10mm Hex Drive
- 8mm Hex Drive
- 4mm Hex Drive
- 18mm Wrench

A FEW WORDS ABOUT PRODUCT SAFETY:

Your TACTIK® Winch is intended to enhance the performance and protection of your off-road capable vehicle. Before installation, please review the following safety information and installation recommendations. Throughout these instructions important safety information is generally preceded by one of three signal words indicating the relative risk of injury, property damage or adverse consequence.

The signal words mean:

⚠ WARNING ⚠

A HAZARDOUS SITUATION WHICH, IF NOT AVOIDED, COULD RESULT IN DEATH OR SERIOUS INJURY. YOU CAN BE KILLED OR SERIOUSLY HURT IF YOU DON'T FOLLOW INSTRUCTIONS.

⚠ CAUTION ⚠

A HAZARDOUS SITUATION WHICH, IF NOT AVOIDED, COULD RESULT IN A MINOR OR MODERATE INJURY. YOU CAN BE MODERATELY HURT AND ALSO MAY SUFFER PROPERTY DAMAGE IF YOU DON'T FOLLOW INSTRUCTIONS.

NOTICE

CAREFUL ATTENTION IS REQUIRED TO THIS INSTRUCTION OR OPERATION BUT DOES GENERALLY NOT RELATE TO PERSONAL INJURY. DAMAGE TO YOUR TACTIK® PRODUCT OR OTHER PROPERTY MAY RESULT IF YOU DON'T FOLLOW INSTRUCTIONS.

BEFORE YOU BEGIN INSTALLATION:

Congratulations on the purchase of your TACTIK® Winch. When unpacking, check to make sure all parts are included and not damaged due to shipping.

If any part is missing or broken, please call Customer Service at 800-745-6037 as soon as possible.

⚠ WARNING ⚠

FIRE/ELECTRICAL SPARK/CHEMICAL BURN HAZARDS: CONNECTING WINCH TO BATTERY AND WINCH OPERATION MAY CAUSE ELECTRICAL ARCS. NEVER INSTALL OR USE WINCH WHERE GASOLINE LEAKS, VAPORS OR OTHER FLAMMABLES ARE PRESENT.

⚠ CAUTION ⚠

ALWAYS WEAR EYE PROTECTION & REMOVE JEWELRY WHEN WORKING WITH BATTERY OR INSTALLING WINCH ELECTRICAL CABLES. PLAN CONNECTIONS TO AVOID FUEL LINES, HOT OR ROTATING PARTS. NEVER ROUTE ELECTRICAL CABLE OR WINCH CONTROLLER ACROSS SHARP EDGES, DOORS OR OTHER PINCH POINTS.

⚠ CAUTION ⚠

ALWAYS USE SUPPLIED TERMINAL BOOTS. INSULATE ANY OTHER EXPOSED CONNECTIONS. NEATLY SUPPORT ALL WIRING. DEPENDING ON YOUR LEVEL OF KNOWLEDGE REGARDING ELECTRICAL WIRING, YOU MAY WISH TO HAVE THIS PROCEDURE PERFORMED BY A QUALIFIED TECHNICIAN.

⚠ CAUTION ⚠

BATTERY CABLES SHOULD NOT BE DRAWN TAUT. LEAVE SLACK FOR SOME CABLE MOVEMENT. THE BATTERY CABLES SHOULD BE SECURE, OUT OF THE WAY OF MOVING PARTS, ROAD DEBRIS, OR ANY POSSIBILITY OF BEING DAMAGED BY OPERATION OR MAINTENANCE OF VEHICLE. FOR EXAMPLE, THE BATTERY CABLES MAY BE ROUTED UNDER THE VEHICLE, ATTACHING THEM TO THE FRAME USING SUITABLE FASTENERS SUCH AS CABLE TIES (NOT INCLUDED).

⚠ CAUTION ⚠

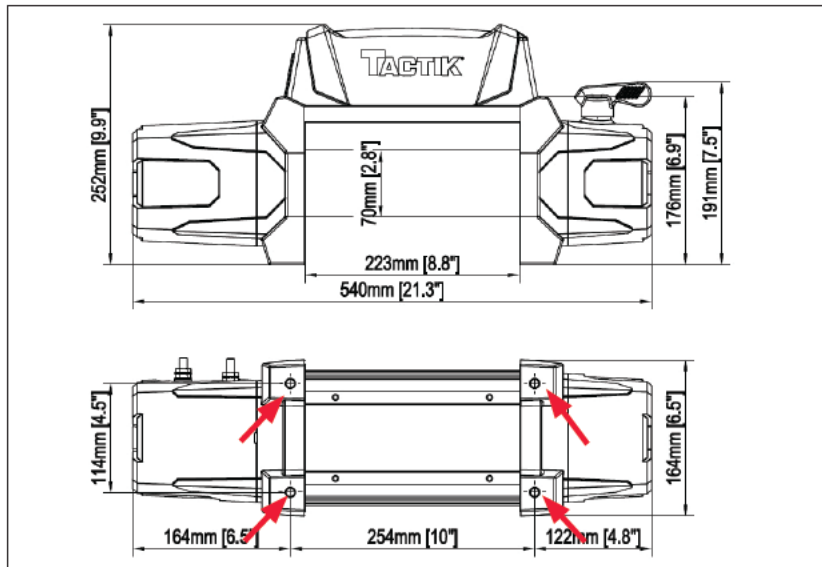
DO NOT ATTACH BATTERY CABLES TO THE EXHAUST SYSTEM, DRIVE SHAFT, EMERGENCY BRAKE CABLE, FUEL LINE, OR ANY OTHER COMPONENTS WHICH MAY CAUSE DAMAGE TO THE BATTERY CABLES THROUGH HEAT OR MOTION, OR CREATE A FIRE HAZARD. IF A HOLE IS DRILLED THROUGH THE BUMPER OR ANY OTHER PART OF THE VEHICLE, MAKE SURE TO INSTALL A RUBBER GROMMET (NOT INCLUDED) IN THE HOLE TO PREVENT FRAYING OF THE BATTERY CABLES AT THAT POINT. THE USE OF AT LEAST A 650 COLD CRANKING AMPS (CCA) BATTERY IS HIGHLY RECOMMENDED.

MOUNTING THE FAIRLEAD AND WINCH



STEP 1

Using a 10mm hex drive and 18mm wrench, mount the supplied Hawse Fairlead to the front of the winch mounting plate (not included) or winch ready bumper using supplied 12mm socket head screws, washers and nuts. The socket head screw and flat washer is used in the countersunk portion of the fairlead. The lock washer and 12mm nut is used in the back of the mounting surface. Tighten securely.



STEP 2

The winch **MUST** be properly secured to a winch mount bumper or an approved winch mount plate with the included 10mm socket head bolt with 10mm flat washer against the bumper or plate with the 10mm lock washer next to the bolt head (qty 4/each). There are machined pockets at each of the four inside base corners that fit a 10mm square head nut. Place a square nut into each pocket and center the winch over the mounting base holes.

In some rare mounting situations drilling for bolt holes may be required. Using an 8mm hex drive, thread the four 8mm socket head bolts with washers through the bottom of the winch mount plate or bumper and into the square nuts.

Use a torque wrench and an 8mm hex drive and torque each mounting bolt to 50 ft-lbs.

Tip: a touch of bearing grease can hold the 4 nuts in place prior to fastening the 10mm socket head bolts.

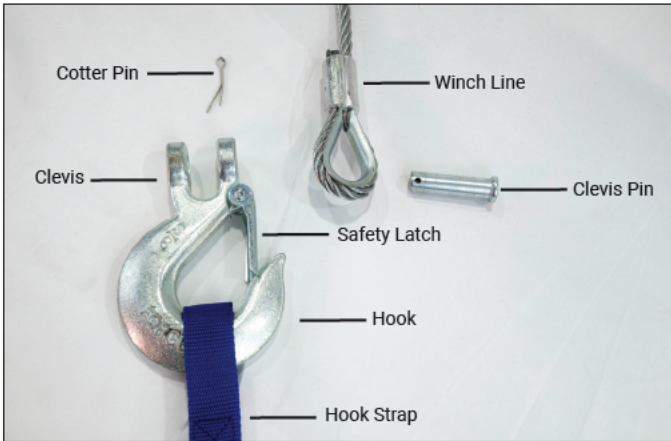


STEP 3

Plan a route for the wiring from the planned winch location to the battery. This route must be secured and out of the way of moving parts, road debris, or any location where parts may be damaged. Inspect and make sure the red, black and yellow cables are attached to their corresponding terminals on the winch. **Make sure the small black wire from the solenoid under the solenoid cover is connected to the black (-) terminal on the motor and the same terminal as the negative (-) battery cable.** Attach the red battery cable to the positive terminal of the battery. Attach the black battery cable directly to the negative terminal of the battery.

To prevent serious injury from leaking battery acid, do not use a dirty, corroded or leaking battery. Only use a 12V automotive (or equivalent) battery with 650 cold cranking amps or greater that is in good condition.

INSTALLING THE WINCH HOOK



STEP 4

Attach the winch hook to the winch line by sliding the hoop from the end of the winch line into the clevis. Secure the hook to the hoop using the clevis pin held in place by the cotter pin. Spread the cotter pin ends to completely secure the hook. Keep the safety latch clean and lubricated at all times.

Always ensure hook latch is closed and not supporting load. Never use a hook that has been bent, warped or twisted.

CAUTION

ALWAYS USE SUPPLIED STRAP TO HOLD THE HOOK. DO NOT PLACE FINGERS THROUGH THE HOOK. FINGERS MAY GET CAUGHT AND GET PULLED INTO THE FAIRLEAD OR DRUM



Properly Seat Load in Throat of Hook

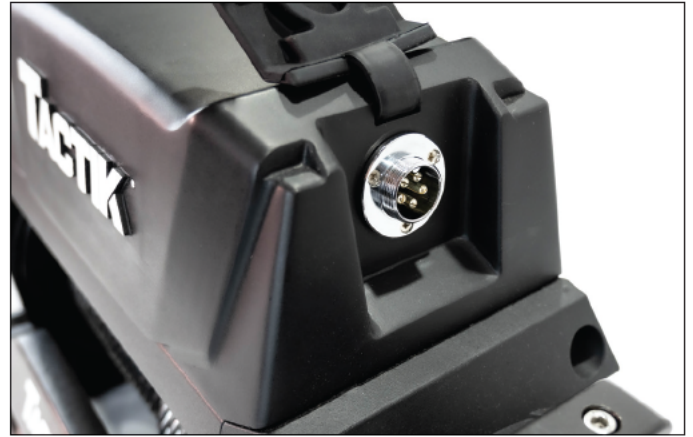


Always Use Supplied Hook Strap



Never Apply Load to Hook Tip or Latch

REMOTE



Lift up and slightly pull the remote plug cover to reveal the 5-pin winch remote socket. Making sure that you align the indexing notch on the top of the plug of the remote with the corresponding tab on the socket, plug the remote cord of the handheld remote controller into the socket. Thread the securing collar onto threaded, outer exterior portion of the socket to maintain a solid connection. With the winch in Free Spool, test both the OUT and IN functions of the winch using the red and blue rubberized switches on the remote with a short press of the switch. Pressing the red "IN" button will light up a red LED just above the button. Pressing the blue "OUT" button will light up a blue LED just above the button.

Tip: Low voltage detection will indicate when the battery voltage is lower than 10.8V. The red and blue LED on the remote will flash. Stop using the winch and turn on the engine while winching to avoid battery damage.

WINCH CLUTCH OPERATION



There are two positions of the clutch handle. The Clutch is either “engaged” or “free spooling”. The clutch allows the operator to manually engage or disengage the spooling drum from the gearset using the clutch lever.

! WARNING !

NEVER ENGAGE OR DISENGAGE CLUTCH IF THE WINCH IS UNDER LOAD, THE WINCH ROPE IS UNDER TENSION OR THE SPOOL IS MOVING IN ANY WAY.

! WARNING !

NEVER LEAVE THE WINCH REMOTE CONTROL PLUGGED IN WHEN NOT IN USE.

SYNTHETIC WINCH LINE PRE-TENSIONING

For synthetic winch line, the winch line must be pre-tensioned prior to use. Do NOT use winch line without pre-tensioning it.

First, while wearing gloves, place the clutch in the free spool position and slowly pull all the winch line from the drum. Remove the line fastener at the drum using a 4mm hex wrench at the drum and remove the line. Thread the winch line through the fairlead and re-attach the line to the winch drum. You now need to pre-stretch winch line to ensure even stretching. To stretch winch line, begin with 5 or 6 snug wraps around the drum and set up a secure anchor point. Pull vehicle (in neutral gear) with the winch up a slight flat incline. This will be easier to do with a second person to steer or use the break as needed. To fully stretch the winch line, you will need about 500 to 1000 lbs. of tension on the cable during the operation. Once you have begun the pull, be sure to rewind the line so it winds to the bottom of the winch drum. Be sure to rewind the cable in tight rows not allowing upper rows to intertwine with lower rows. Monitor the line, ensuring that the line moves as a smoothly and cleanly as possible.

Do not check, touch or attempt to reposition rope with load on the winch line. Release tension by pushing the “OUT” button to let the line out a little to reposition as needed.

LEARN TO WINCH PROPERLY



WARNING

A WINCH MUST BE OPERATED SAFELY. READ THE ACCOMPANYING OPERATOR'S GUIDE BEFORE OPERATING YOUR WINCH AND FOLLOW ALL INSTRUCTIONS.

A copy of the Operator's Guide can be downloaded by scanning the following QR code:



Your winch should add greater utility and enjoyment to your off-road adventures. Keep in mind, however, the weight of your vehicle and the forces required to move it create certain hazards. Self-recovery that is safe for you, bystanders and the environment requires product knowledge, planning and practice.

Be aware there are specific techniques and hazards associated with recovery winching. Begin by understanding ALL Safety Information and by learning from more experienced off-road enthusiasts. **Always develop and rely on your own good judgment.**

WINCH CARE AND CLEANING

Do not direct very high-pressure water at your winch. Use low-pressure (normal) car wash soap and water to clean your winch. With the remote control disconnected and the protective boots covering the remote control socket and power button sockets, wash normally with your vehicle. During winter exposure to road salt, wash the winch as soon as possible to avoid corrosion. Always wash per the recommendations above.

A fully charged battery and good connections are essential to the proper operation of your winch. The minimum requirement for a 12 volt automotive DC battery is 650 Cold Cranking Amps.

All moving parts within the winch have been lubricated at the factory using high temperature lithium grease. No internal lubrication is required. Check battery cables and electrical connections at regular three month intervals to be certain they are clean and tight at all connection points. Inspect winch line before and after each winching operation.

DUTY CYCLE

Avoid damage to the winch by not winching for more than the prescribed duty cycle time. The Duty Cycle defines the amount of time, within a 15-minute period, during which a winch can operate at its maximum capacity without overheating. For example, this winch with a 5% duty cycle at 65% maximum load must be allowed to rest for at least 14 minutes, 15 seconds after every 45 seconds of continuous operation. Failure to carefully observe duty cycle limitations can easily over-stress a winch, causing premature winch failure.

NOTICE

TO AVOID DAMAGE TO WINCH MOTOR, WINCH MUST COOL DOWN FOR THE APPROPRIATE TIME.

SPECIFICATIONS

Property	Specification
Rated Single Line Pull	10,000lb (4536kg)
Application	Vehicle Recovery / For Trucks and SUVs
Motor	12V DC 5.5 HP Series Wound
Power In & Power Out	Yes
Duty Cycle Rating	5% (45 seconds at Max Rated Load: 14 minutes, 15 seconds rest)
Wired Remote Controller	Wired, 12' (3.7m) Long
Gear Train	3-stage Planetary
Gear Ratio	232:1
Free spool	Locking Ring Gear
Brake	Auto Load Holding
Drum (Dia. XL)	2.75" x 8.8" (70mm x 224mm)
Clevis Hook	3/8", Replaceable with Spring-Loaded Safety Latch
Fairlead	Hawse Fairlead - Iron (w/ Steel Cable)
Fairlead	Hawse Fairlead - Aluminum (w/ Synthetic Line)
Rope Size/Type	0.335" x 82' (w/ Steel Cable)
Rope Size/Type	3/8" x 82' (w/ Synthetic Line)
Battery	12V DC Minimum 650 CCA
Battery Cables	Min. 3.5 Gauge
Overload Protection	Built in with remote
Sound Rating	85db
Overall Dimensions (LXDXH)	21.3" X 6.5" X 9.9" (540mm X164mm X252mm)
Approximate Net Weight (w/ rope)	Synthetic Rope 57.1lb (25.9kg) Steel Cable 70.1 lbs (31.8kg)
IP Rating	IP68 on winch and wired remote control.

TROUBLESHOOTING

PROBLEM	POSSIBLE CAUSE	POSSIBLE SOLUTION
<p>When remote control switch is activated, a clicking sound occurs and winch does not operate in either the power in or power out mode.</p>	Battery is inadequate or defective.	Replace battery with 650 cold cranking amp rating or greater.
	Battery is not fully charged.	Charge battery.
	Faulty battery cable or connections.	Clean and tighten all battery connections.
	Poor electrical grounding of thermo relay wire.	Be sure connections are clean and tight.
	Water in motor from submersion.	Replace motor.
	Worn or damaged brushes.	Replace motor.
	Vehicle not running.	Start vehicle and keep it running while operating the winch.
<p>Winch lacks power, pulls slower than normal, stalls or does not run at all.</p>	Ground and power cables are loosely connected to battery or winch terminals.	Be sure connections are clean and tight.
	Battery is not fully charged.	Charge battery.
	Battery is inadequate or defective.	Replace battery with 650 cold cranking amp rating or greater.
	Battery terminals are corroded.	Clean battery terminals.
	Solenoid thermo relay wire is faulty.	Be sure connections are clean and tight.
	Vehicle not running.	Start vehicle and keep it running while operating the winch.
<p>Winch does not have the same pulling power as it did when it was new.</p>	Ground and power cables are loosely connected to battery or winch terminals.	Be sure connections are clean and tight.
	Battery is not fully charged.	Charge battery.
	Battery is inadequate or defective.	Replace battery with 650 cold cranking amp rating or greater.
	Battery terminals are corroded.	Clean battery terminals.
	Vehicle not running.	Start vehicle and keep it running while operating the winch.

TROUBLESHOOTING

PROBLEM	POSSIBLE CAUSE	POSSIBLE SOLUTION
When winch control is activated, the winch operates only in one direction.	Remote control switch is damaged.	Check remote control switch and its cable. Check all connections and replace if necessary.
	Ground and power cables are loosely connected to battery or winch terminals.	Be sure connections are clean and tight.
	Battery is not fully charged.	Charge battery.
	Battery is inadequate or defective.	Replace battery with 650 cold cranking amp rating or greater.
	Battery terminals are corroded.	Clean battery terminals.
	Solenoid thermo relay wire is faulty.	Be sure connections are clean and tight.
	One of the solenoids inside the control pack is stuck or damaged.	Replace solenoid module.
	Vehicle not running.	Start vehicle and keep it running while operating the winch.
Winch does not hold a load.	Winch line is spooled onto the winch drum in the wrong direction.	Winch line must exit from the bottom of the drum. Respool in the proper direction.
	Load exceeds the winch rating.	Do Not exceed the line pull rating shown in the ID label on the winch motor. Refer to the winch operators manual for correct rating.
	Brake inside the winch drum is badly worn or broken.	Replace entire brake assembly.
Winch line has difficulty spooling off the winch drum by hand.	Bent drum side flange.	Replace drum.
	Worn drum bearing surfaces.	Replace motor end and clutch ends.
	Free spool clutch is damaged.	Remove and inspect gear carrier assembly. Inspect output gear, intermediate gear, input gear, sun gear ring and gear ring output. Remove burrs with file.
	Winch is not mounted correctly or square on the winch plate.	Check mounting hole measurements for consistency and squareness. Be sure that mounting surface is flat and mounting bolts are tight.
	Internal corrosion on ring gear.	Disassemble gear assembly, inspect for damage, clean and grease or replace worn or damaged parts.

TACTIK® Exclusive One Year Limited Warranty

Your TACTIK® branded accessories are covered by the following Limited Warranty provided exclusively by TACTIK® located at 1028 Saunders Lane, West Chester PA 19380.

This **Limited Warranty** is the only warranty made in connection with your purchase. TACTIK® neither assumes nor authorizes any vendor, retailer or other person or entity to assume for it any other obligation or liability in connection with this product or **Limited Warranty**.

What is Covered: Subject to the terms, exclusions and limitations herein and with respect only to TACTIK® branded accessories first sold in the United States, TACTIK® warrants to the initial retail purchaser only that your TACTIK® accessory shall be free of defects in material and workmanship: **for a period of one (1) year from date of retail purchase.**

This **Limited Warranty** is not assignable and shall terminate upon sale of the vehicle upon which the TACTIK® accessory is installed or other transfer to third persons.

All other warranties are hereby disclaimed, except to the extent prohibited by applicable law in which case any implied warranty of merchantability or fitness for a particular purpose on this product is limited to one (1) year from date of initial retail sale. TACTIK® reserves the rights to: (a.) require invoice or other proof your accessory is within the terms of this **Limited Warranty** as a condition of warranty service and, (b.) make future revisions to this product and **Limited Warranty** without prior notice or obligation to upgrade your product.

What is Not Covered:

Your TACTIK® **Limited Warranty** does not cover products or parts TACTIK® determines to have been damaged by or subjected to: (a.) installation damage, alteration, modification, combination with other parts, failure to maintain or improper repair or service, (b.) normal wear & tear, cosmetic damage or damage from moisture or water immersion, (c.) Acts of God, accidents, misuse (including insufficient winch rest between successive winch pulls), negligence, inadequate mounting or impact with vehicle(s), obstacles or other aspects of the environment, (d.) theft, vandalism or other intentional damage.

Remedy Limited to Repair/Replacement: The exclusive remedy provided hereunder shall, upon TACTIK® inspection and at TACTIK's option, be either repair or replacement of product or parts (new or refurbished) covered under this **Limited Warranty**. Customers requesting warranty consideration should first contact TACTIK® to obtain a RGA number via telephone at 800-603-4064, or initiate customer service by email at: customerservice@tactik4x4.com. All labor, removal, shipping and installation costs are customer's responsibility.

Other Limitations - Exclusion of Damages - Your Rights Under State Law:

In consideration of the purchase price paid, neither TACTIK® nor any independent TACTIK® distributor/licensee are responsible for any time loss, rental costs, or for any incidental, consequential, punitive or other damages you may have or incur in connection with any part or product purchased. Your exclusive remedy hereunder for covered parts is repair/replacement as described above.

This **Limited Warranty** gives you specific rights. You may also have other rights that vary from state to state. For example, some states do not allow limitations of how long an implied warranty lasts and /or do not allow the exclusion or limitation of incidental or consequential damages, so the limitations and exclusions herein may not apply to you.

©TACTIK® 2021 All Rights Reserved.
A4 Version 12/2/2021

Instructions Part # 12999.3219