



# INSTALLATION INSTRUCTIONS

## D-Ring

Part Numbers: 102370

Application: Jeep JL 2018+

### GENERAL SAFETY PRECAUTIONS

Your safety, and the safety of others, is very important. To help you make informed decisions about safety, we have provided installation and operating instructions and other information on labels and in this guide. This information alerts you to potential hazards that could hurt you or others. It is not possible to warn you about all potential hazards associated with this product, you must use your own good judgment.

**CARELESS INSTALLATION AND OPERATION CAN RESULT IN SERIOUS INJURY OR EQUIPMENT DAMAGE. READ AND UNDERSTAND ALL SAFETY PRECAUTIONS AND OPERATING INSTRUCTIONS BEFORE INSTALLING AND OPERATING THIS PRODUCT.**

This guide identifies potential hazards and has important safety messages that help you and others avoid personal injury or death. **WARNING** and **CAUTION** are signal words that identify the level of hazard. These signal words mean: **▲WARNING** signals a hazard that could cause serious injury or death, if you do not follow recommendations. **▲ CAUTION** signals a hazard that may cause minor to moderate injury, if you do not follow recommendations. This guide uses **NOTICE** to call attention to important mechanical information, and **Note:** to emphasize general information worthy of special attention.

### ▲ WARNING

#### Impact and Moving Parts Entanglement Hazard

#### **FAILURE TO OBSERVE THESE INSTRUCTIONS COULD LEAD TO SEVERE INJURY OR DEATH**

- Always Know Your Winch. Take time to fully read the Instructions and/or Operations Guide, and/or Basic Guide to Winching Techniques, in order to understand your winch and its operations.
- Never work under vehicle before properly securing vehicle.
- Always use appropriate and adequate care in lifting components into place.
- Never work under vehicle before properly securing vehicle.
- Always use appropriate and adequate care in lifting components into place.
- Never use a jack to support the vehicle.
- Always use jack stands in pairs to support the vehicle.
- Always use jacks or jack stands only on a hard, stable, and level surface.
- Never exceed the rated capacity of a jack or jack stands.
- Always verify that the parking brake is set, the transmission is in park (automatic) or reverse (manual) and the rear wheels are blocked before working on vehicle.
- Never work under vehicle before properly securing vehicle.
- Always use appropriate and adequate care in lifting components into place.
- Always insure components will remain secure during installation and operation.
- Always tighten all nuts and bolts securely, per the installation and operation.
- Always perform regular inspections and maintenance on the winch, winch mount and related hardware.
- Always replace all worn or damaged parts before operating.
- Never operate this WARN product with damaged or missing parts.
- Always use extreme caution when drilling on any vehicle. Make sure that all fuel lines, brake lines, electrical wires, and other objects are not punctured or damaged when / if drilling on the vehicle. Thoroughly inspect the area to be drilled (on both sides of material) prior to drilling, and relocate any objects that may be damaged. Failure to inspect the area to be drilled may result in vehicle damage, electrical shock, fire or personal injury.
- Always use extreme caution when cutting and trimming during fitting.
- Always wear safety glasses when installing this kit. A drilling operation will cause flying metal chips. Flying chips can cause eye injury.
- Always remove jewelry and wear eye protection.
- Never lean over battery while making connections.
- Never route electrical cables across any sharp edge, through or near moving parts, near parts that become hot.

**Read installation and operating instructions thoroughly.**

WARN INDUSTRIES, INC. 12900 S.E. Capps Road,  
Clackamas, OR USA 97015-8903, 1-503-722-1200, FAX: 1-503-722-3000  
Customer Service: 1-800-543-9276  
Dealer Locator Service: 1-800-910-1122  
International Sales/Customer Service: 1-503-722-3008  
International Fax: 1-503-722-3005

## ⚠ CAUTION

### Moving Parts Entanglement Hazard

#### FAILURE TO OBSERVE THESE INSTRUCTIONS COULD LEAD TO MINOR OR MODERATE INJURY

- Part edges may be sharp!
- Always use proper posture / lifting technique or get lifting assistance while handling and installing product.

Read installation and operating instructions thoroughly.

## NOTICE

### Equipment Damage

- Never tow vehicle by attaching a tow bar to the eyelets on the bumper.
- Do not attach tow bars directly to the bumper. Damage to bumper may occur. WARN bumpers are not designed to be used for flat towing. Consult with the manufacturer of your tow bar system for the proper vehicle tow bar brackets..

Read installation and operating instructions thoroughly.

## TABLE OF CONTENTS

<i>Tools Required</i> .....	<i>page 2</i>
<i>Torque Specifications</i> .....	<i>page 2</i>
<i>Parts List</i> .....	<i>page 3</i>
<i>Installation</i> .....	<i>page 4-8</i>

## TOOLS REQUIRED

- Ratchet, extensions, universal
- Sockets: Standard and Metric
- End Wrenches: Standard and Metric
- Phillips Screwdriver
- Metal cutting saw

## TORQUE SPECIFICATIONS

Please use the recommended torque specifications when assembling this product unless otherwise specified in the instructions.

FASTENER SIZE	FASTENER TORQUE		FASTENER SIZE	FASTENER TORQUE	
	lb-ft	(N.m)		lb-ft	(N.m)
1/4"	8	(11)	M4	(2)	3
5/16"	17	(23)	M5	(4.5)	6
3/8"	30	(40)	M6	(7.5)	10
7/16"	48	(66)	M8	(18)	25
1/2"	74	(100)	M10	(37)	50
9/16"	106	(144)			
5/8"	148	(200)			
3/4"	269	(364)			

# PARTS LIST

ID	Part No.	Description	Qty
A1	1145	1/2 WASHER	6
A2	6818	1/2-13 X 1-1/2-HEX HEADBOLT	4
A3	13483	1/2-13 X 2-1/4-HEX HEAD BOLT	2
A4	29060	1/2-13-LOCKING NUT	6
B5	102364	D-RING WELDMENT LH	1
B6	102369	D-RING WELDMENT RH	1

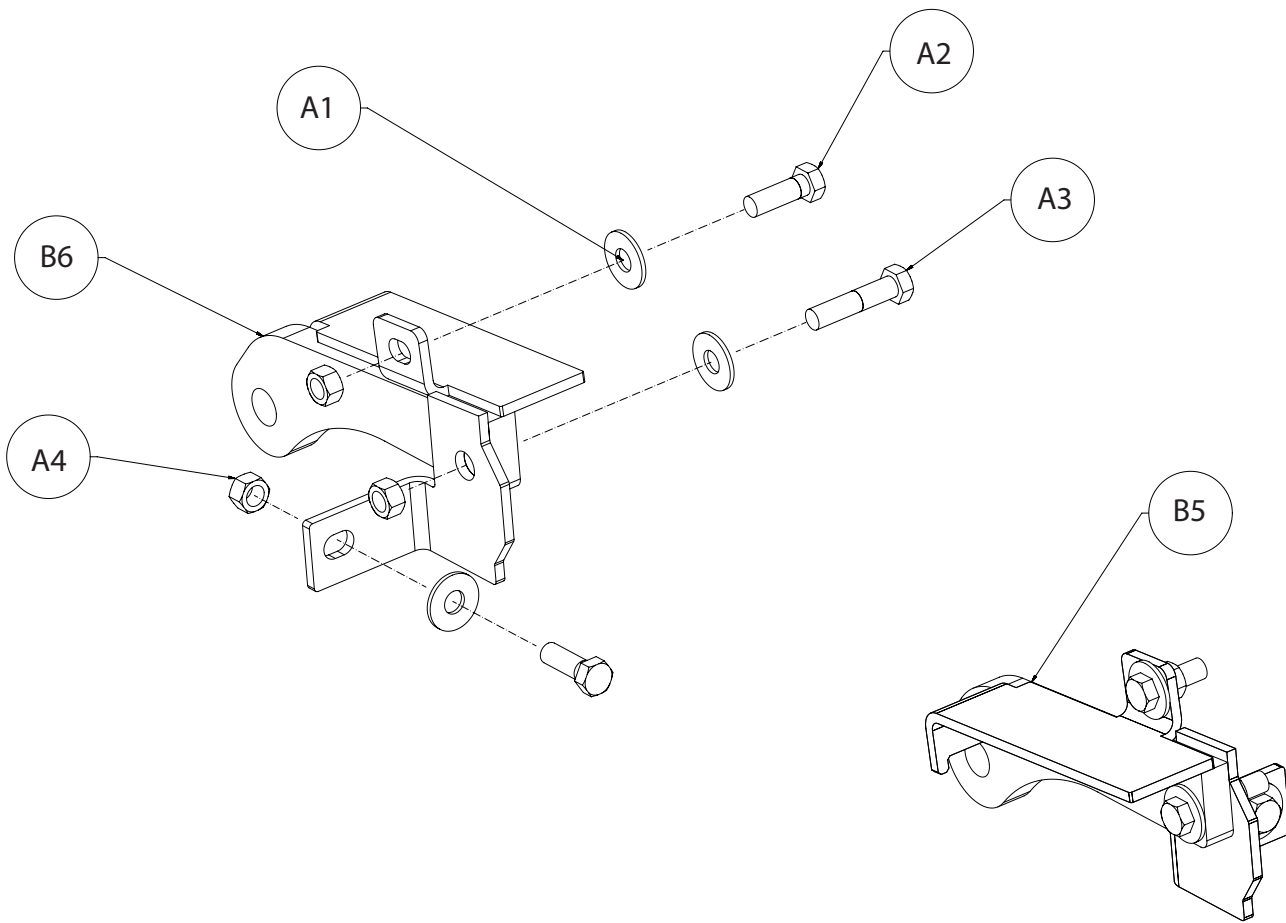




Figure 1

## REMOVAL (STEEL BUMPER MODELS)

1. Remove fascia plate, located behind the bumper, by using a small screwdriver to pry the two clips (one on each side) up and out of plate. **NOTE: You will not be reinstalling fascia plate.**



Figure 2

2. Using a 13mm socket, remove bolts securing skid plate to bumper and frame.

Once all bolts (7 total) are removed, remove skid plate completely. **NOTE: Retain hardware for when the skid plate is reinstalled.**



Figure 3



# INSTALLATION INSTRUCTIONS

## REMOVAL (PLASTIC BUMPER MODELS)

1. Remove fascia plate trim clips, located behind the bumper, by using a small screwdriver to pry the two clips (one on each side) up and out of plate.

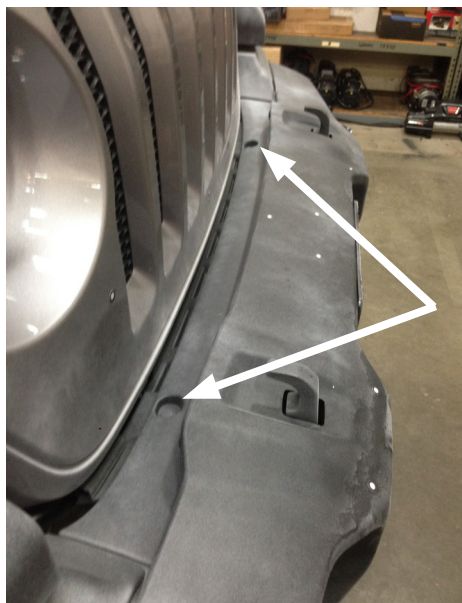


Figure 1

2. Uninstall the OE skid plate by removing the plastic push clips attaching it to the bumper (Qty 8) and the bolts holding it to the frame (Qty 2).

**NOTE:** The OE skid plate is incompatible with the Warn bumper and will not be reused.



Figure 2

3. Uninstall the OE skid plate support by removing the two (2) bolts holding it to the frame.

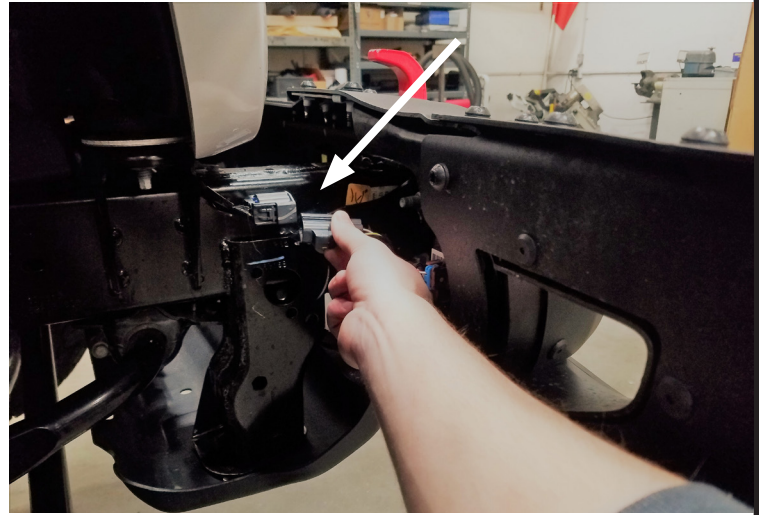
**NOTE:** The skid plate support will not be reused for most models (exception is the Sport Plus Edition).



Figure 3

**CONTINUE REMOVAL... FOR ALL BUMPER MODELS**

4. Disconnect the fog light wire harness, located along the frame rail on the passenger side of the vehicle.

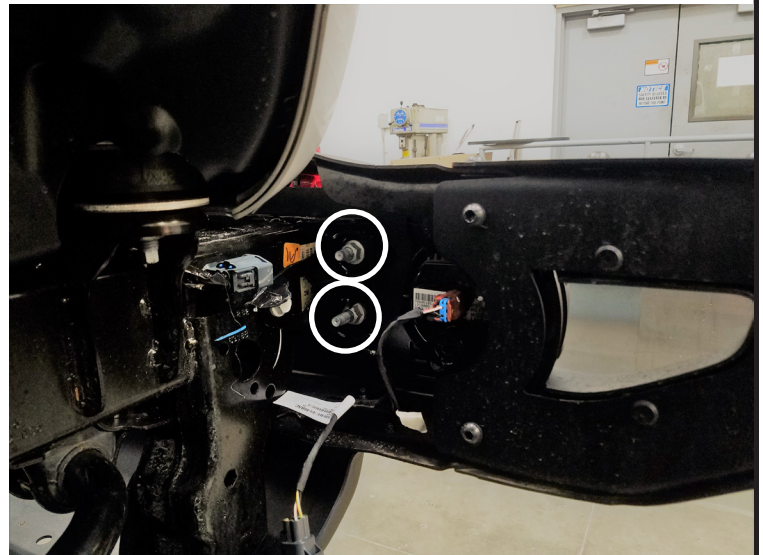


**Figure 4**

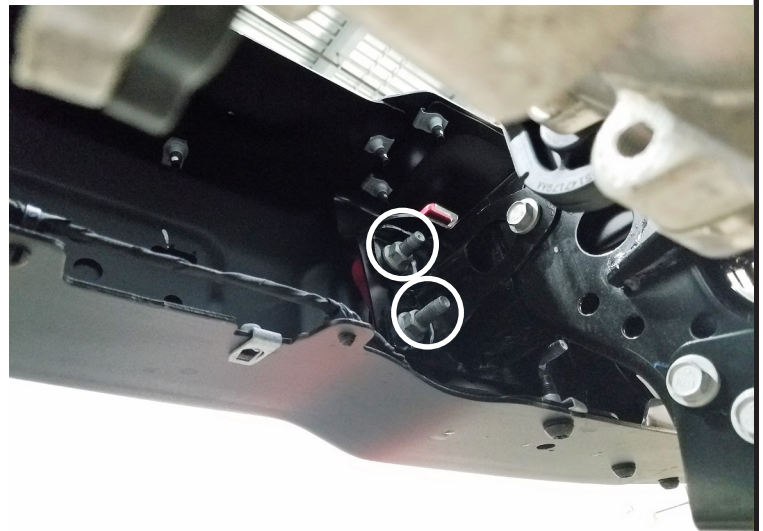
5. Use an 18mm socket to remove the nuts (qty. 8) from the OE bumper.

There will be two on the inside and on the outside of each frame rail (both sides) as shown in Figures 5 and 6.

**NOTE:** *Sport and Sahara similar*



**Figure 5**



**Figure 6**



# INSTALLATION INSTRUCTIONS

## ⚠ CAUTION

- Always use assistance when moving or lifting heavy parts.

6. With assistance, carefully remove the bumper and place it on a clean stable surface (save hardware for later reinstall).



Figure 7

7. Install the D-ring with the fasteners provided (each side).

**NOTE: (Sport Plus Edition Models):** The cross member can be reinstalled before D-ring.

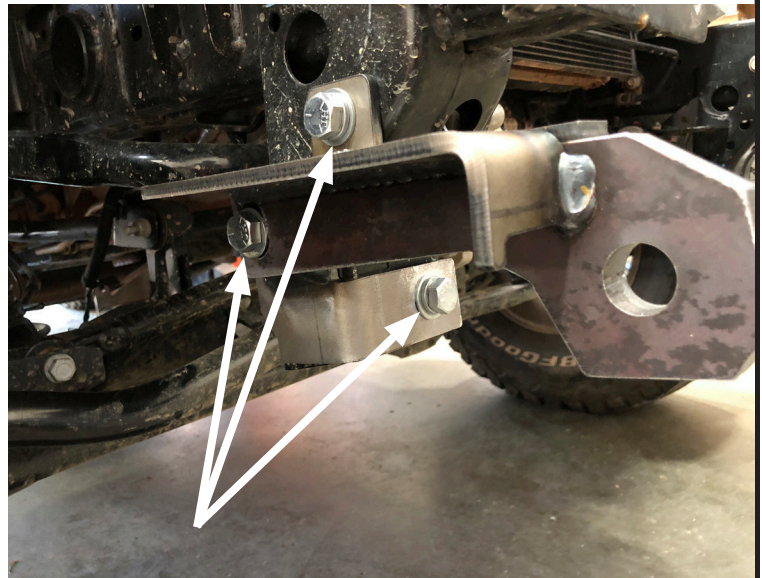
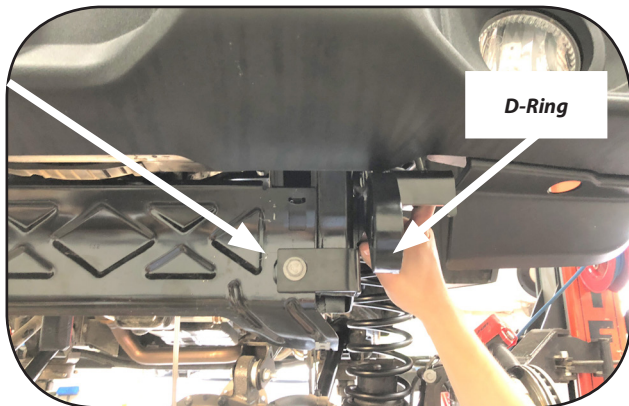


Figure 8

8. With assistance, hold the bumper in place.
9. With a paint pen, mark where the D-ring interferes with bumper (each side).
10. Place bumper on flat surface and carefully cut out marked area.

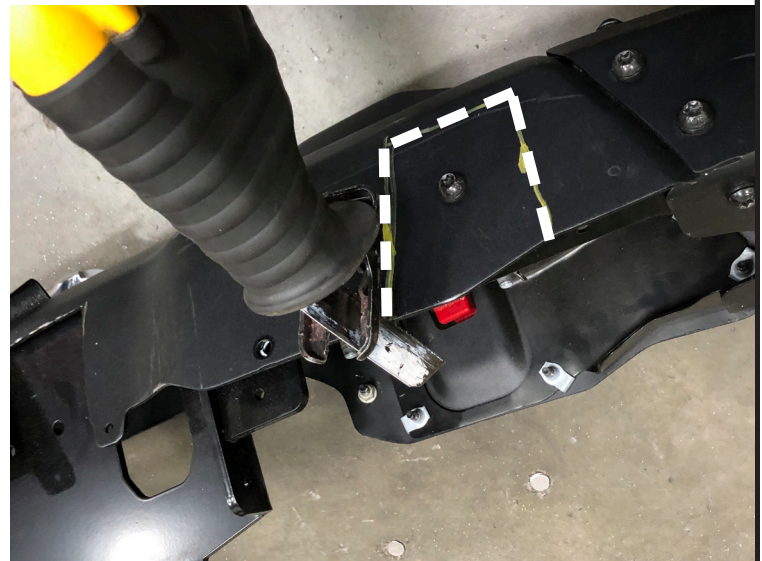


Figure 9

11. Once the marked area has been cut, remove bolt.



Figure 10

12: Paint the exposed metal to prevent corrosion.

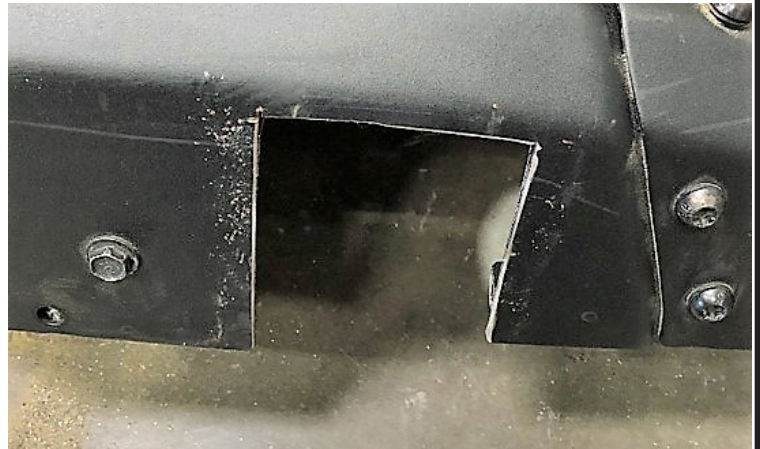


Figure 11

### **⚠ CAUTION**

- Always use assistance when moving or lifting heavy parts.

13. With assistance, fit bumper in place.
14. Verify that the bumper clears the D-ring (both sides). If interference is still apparent, file down edges to allow fit.
15. Once fit is clear, secure bumper in place.



Figure 12

### **MAINTENANCE / CARE**

1. Inspect all parts on the winch, winch mount, and related hardware prior to each use. Replace all hardware that appears rusted or deformed.
2. Inspect all nuts and bolts on the winch, winch mount and related hardware prior to each use. Tighten all nuts that appear to be loose. Stripped, fractured, or bent bolts or nuts need to be replaced.
3. Check all cables prior to use. Replace cables that look worn or frayed.
4. Check all moving or rotating parts. Remove debris that may inhibit the part from moving freely.