

Input Voltage	Power
12V DC	Running Light Mode: 2w Turn Signal Mode: 5w RGB max power: 6.5w

Warranty and Disclaimer

XKGLOW products that have one or more LEDs fail to illuminate due to a defect in materials or workmanship are covered with **a THREE year warranty for the original buyer.**

Installation of this product must be performed by a licensed professional. Should the failure of the product be the result of damage occurring as a result of improper installation, alteration of the product or an act or omission on the part of the consumer, this warranty is void. XKGLOW Lighting shall not be responsible for any consequential damages which arise from the use and/or installation of the product. If the kit is installed in any manner other than specified, XKGLOW Lighting reserves the right to deny any warranty claims at the discretion of the technical support department. Any product return must include the original packaging, invoice number and a statement of the alleged defect. Upon receipt of the returned product, the company will test the product for defect. If the results of the testing do not support the warranty claim, do not reveal any defect or indicate consumer negligence in the installation and handling of the product, then the product will be returned to you and you will be charged a reshipping fee. If the product is returned from an address within the continental United States, within the first 30 days after purchase, and is found to be defective, XKGLOW Lighting will exchange or refund the original purchase expense. This offer does not extend to the cost for shipping charges on any international packages.

Additional Disclaimer Terms

Please check your local and state laws for the proper use of this product.

- Improper installation of electrical products such as lighting may cause damage to any vehicle or device to which the improperly handled or installed lighting is attached.
- Improperly installed product may cause electrical injury to persons.
- It is recommended that the kit should be installed by a licensed professional.
- XKGLOW assumes no liability for the installation of the product.
- Warranty or liability will not exceed the product purchase price, which shall be buyer's sole and exclusive remedy.

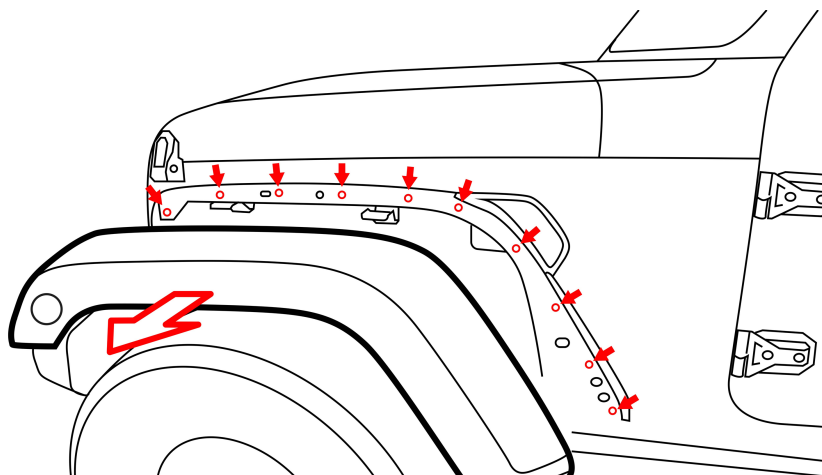
Return/Exchange Procedure

1. Email [xk@xkglow.com] to notify us of the product issue as well as the item number and name of customer on invoice.
2. We will send you the trouble-shooting guide to fix the issue, or to narrow down which of the component(s) need to be replaced. If the issue still exists, we will ask you to send back the defective items to be replaced.
3. Please send the returned item as instructed, along with claims and a telephone number where you can be reached.
4. After the returned item(s) have been accepted and inspected, we will issue a refund or replace the items ASAP. For refunds, item(s) must be sent to XKGLOW within 14 days from date of purchase. Original shipping charges are not refundable.

We always stand behind our products and are committed to our customers! For questions you may have, please contact xk@xkglow.com. We normally respond within 24 hours. (Monday-Friday).

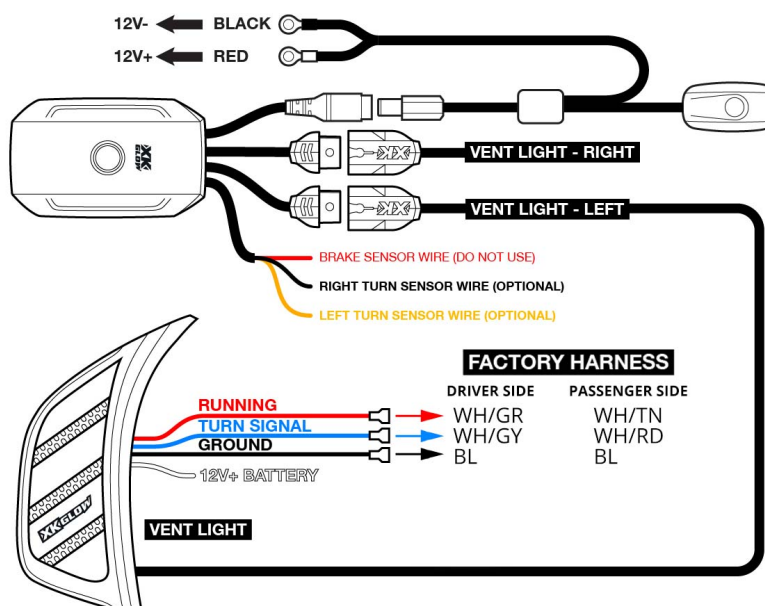
Mounting Instructions

1. **Remove Fenders:** Remove fenders by removing 10mm bolts inside the wheel well. Once the bolts are removed the fender is held on by body clips. Firmly pull the fender away from the vehicle starting at the bottom of the fender. You will hear a popping noise, this is simply the clips letting go. Use gentle force and proper tool to avoid clips breaking during this process. NOTE: Disconnect the side marker light bulb before removing the fender.

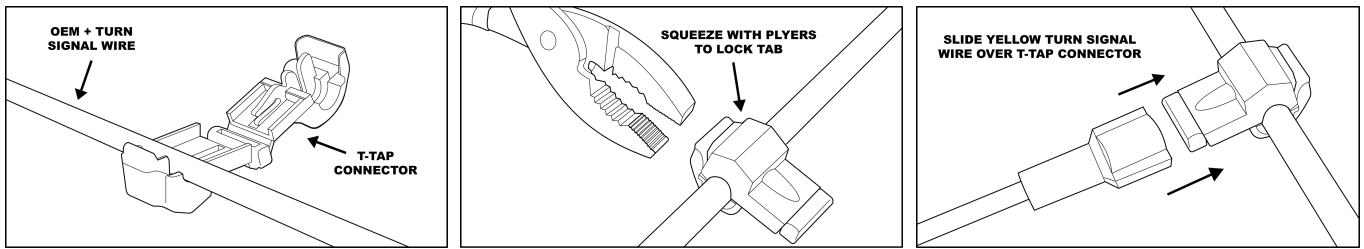


Example 1

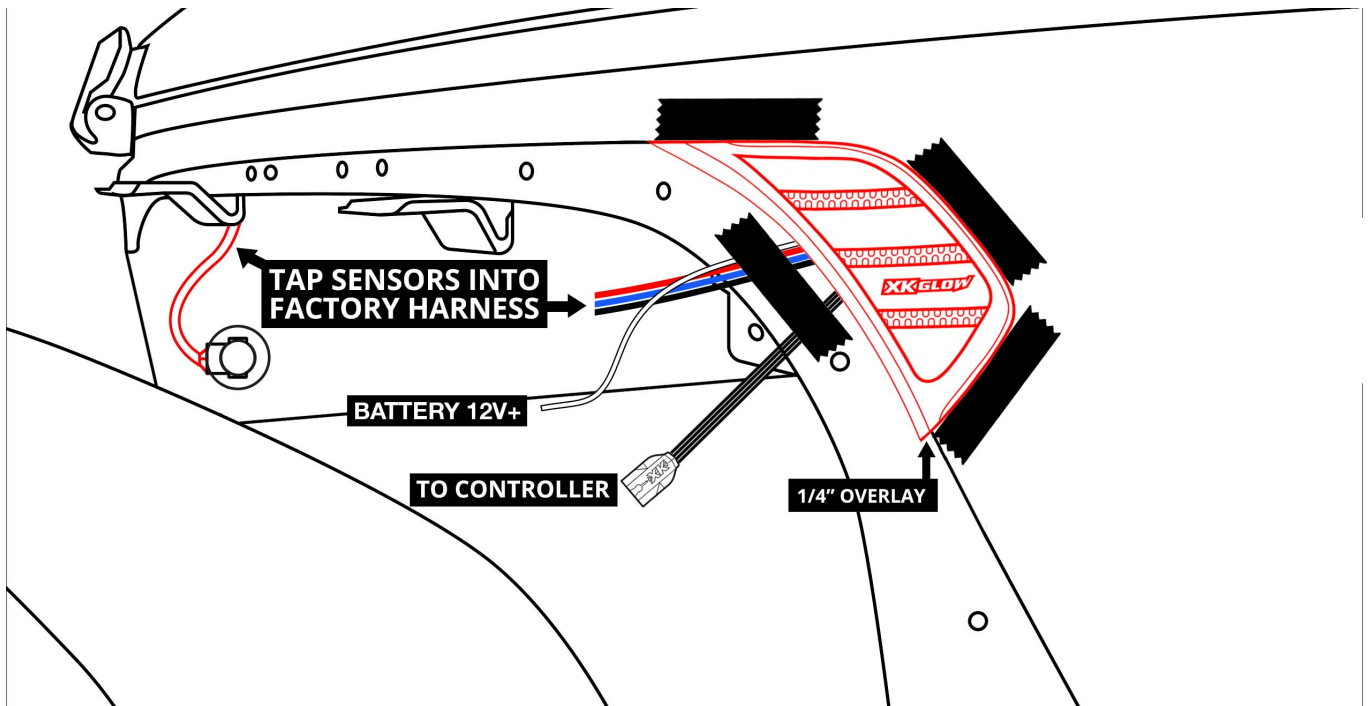
2. **Locate factory wiring harness:** Locate the wire harness going to the grill turn signals from the back side of the grill. You will use THIS harness to tap the XK Fender Vent Light into. Remove the turn signal bulb for more access to the harness. See **Example 3**.
3. **Tap into factory sensor wires and connect to power:** The three side facing light bars are controlled with the vehicle turn and running light signal. Use **Example 2** to locate the Running Light, Turn Signal Light, and Ground wires from the factory wiring harness. Use provided T-tap connectors to tap into corresponding wires. Connect the white wire to vehicle 12V+ battery power.



Example 2

How to use T-tap connectors

4. **Connect XKchrome app controller:** The profile RGB light facing upwards and backwards of the vehicle is controlled by the included XKchrome controller. As shown above, connect the black wire of the switch wire to battery ground, and connect the red wire of the switch to 12V battery +.
5. **Test the light:** After all wires are securely connected, test the light for functionality while the vehicle is both running and not running before mounting the light.
6. **Lining up the light:** When installing the Fender Vent on the JK, proper placement is essential. You will want to mockup the placement using masking tape before you stick the light to the body. See **Example 3**.
 1. Clean body surface extremely well, remove any 'newly' applied wax.
 2. Tape a line across the top of the fender recess.
 3. Place the JK Vent under the taped line and just inside the fender recess by ¼" inch.
 4. Use electrical tape or duct tape to tape wires to the body of the Jeep, inside the fender recess area. ****Make sure the wires are lying flat.**
 5. Using masking tape to tape the light into place and temporary place fender into Jeep to check fitment.
 6. If adjustment is needed, do so now.
 7. Once the light is mocked in place and snug against the fender, mark the light location with masking tape around the outside of the light.
 8. Remove fender and pull light away from the body.
 9. Carefully remove backing on VHB tape and stick to body of vehicle using the masking tape as reference. Apply pressure until the light sticks to body.
 10. Remove placement masking tape.
 11. Reinstall fender.
 12. Power on, download the **XKchrome** app, and enjoy!



Example 3



Please note: There are multiple XKGLOW apps on the App Store. Only the XKchrome App will work with the XKchrome Bluetooth Controller. The App icon is pictured here.