

advanced FLOW engineering Momentum ST Intake System
Instruction Manual P/N: 51-46209 / 54-46209 / 75-46209

Make: **Jeep** Model: **Cherokee (XJ)** Year: **1991-2001** Engine: **I6-4.0L**



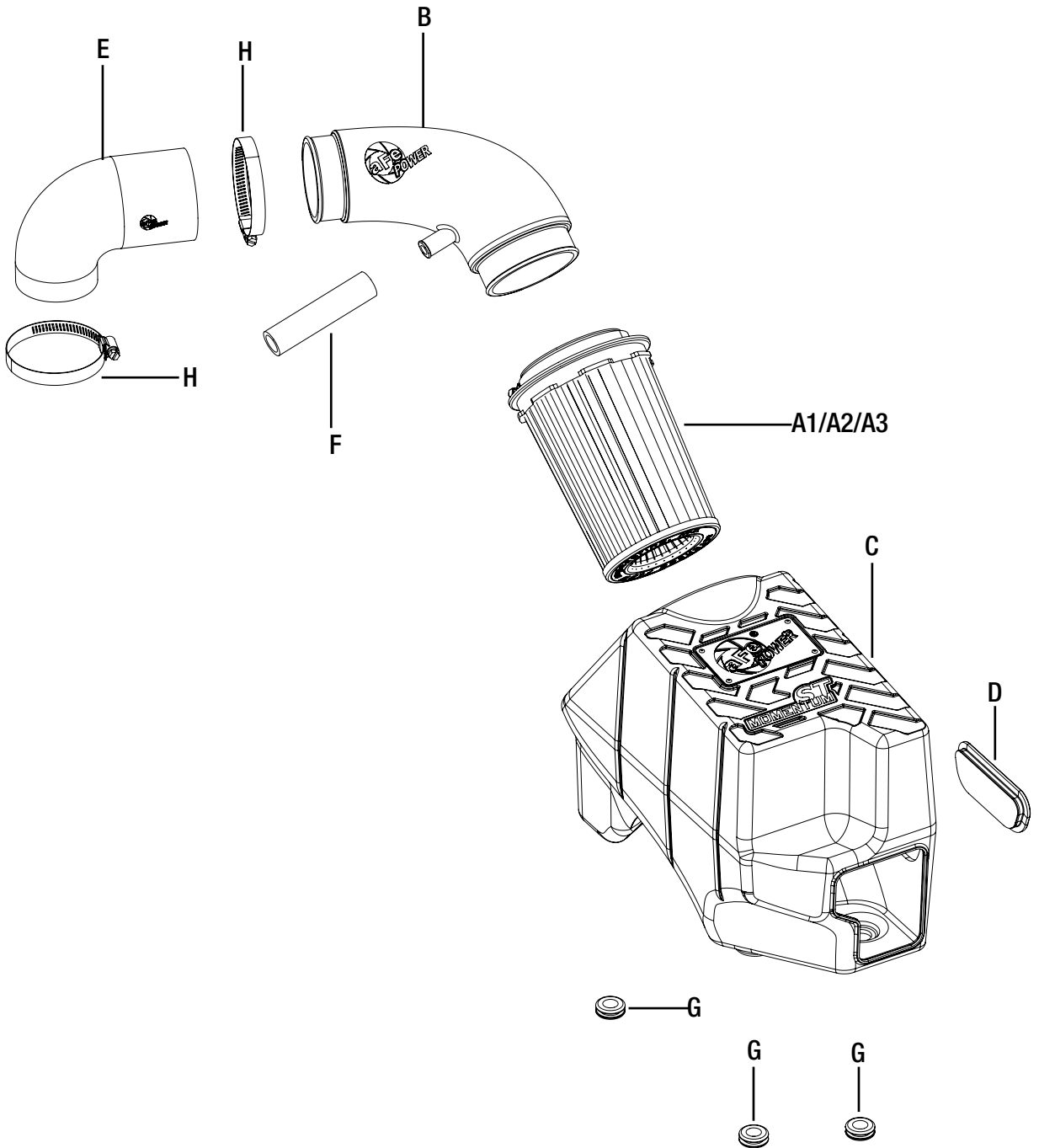
- Please read the entire instruction manual before proceeding.
- Ensure all components listed are present.
- If you are missing any of the components, call customer support at 951-493-7100.
- Ensure you have all necessary tools before proceeding.
- Do not attempt to work on your vehicle when the engine is hot.
- Disconnect the negative battery terminal before proceeding.

Retain factory parts for future use.

Label	Qty.	Description	Part Number
A1	1	Air Filter (Pro DRY S)	21-90099
A2	1	Air Filter (Pro 5R)	24-90099
A3	1	Air Filter (Pro-GUARD 7)	72-90099
B	1	Tube	05-01467B1
C	1	Housing	05-01467B2
D	1	Plug, Airbox	05-00937
E	1	Coupling, Elbow Reducer	05-01009
F	1	Hose, Silicone Breather: 1/2" (5")	05-01396
G	3	Grommet, Rubber	03-50076
H	2	Clamp. #048	03-50007

Tools needed: Flat Head Screwdriver, 13mm deep socket or extension, 8mm nut driver, and ratchet wrench.

Note: Legal in California for use on race vehicles only. The use of this device on vehicles used on public streets or highways is strictly prohibited in California and others states that have adopted California emission regulations.



**Figure A****Refer to Figure A for Steps 1-2**

Step 1: Disconnect the PCV hose (1) from the stock intake housing and move it to the side.

Step 2: Using a flathead screwdriver, disconnect the two clamps (2) on the stock intake tube and remove the tube from the vehicle.

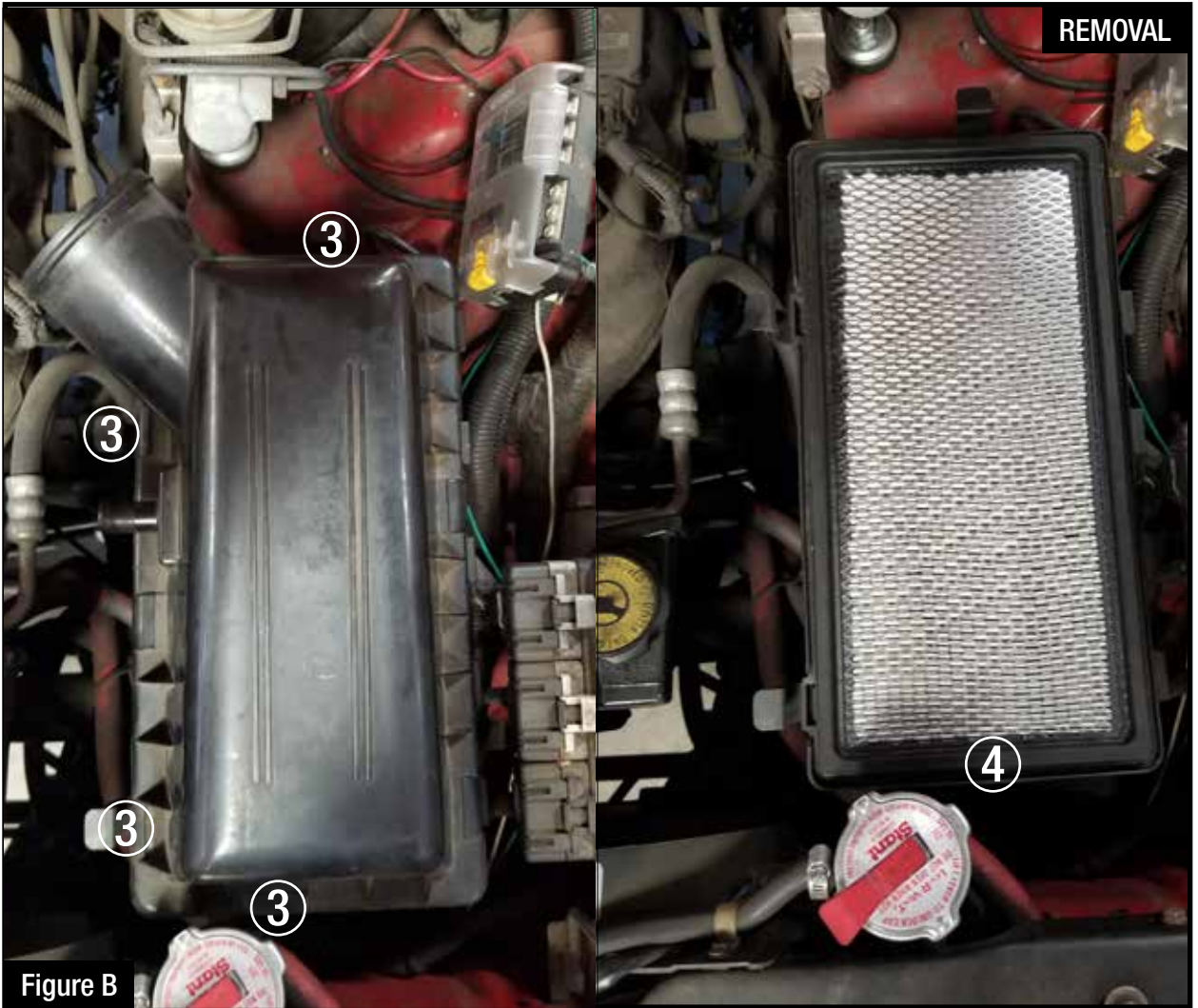


Figure B

Refer to Figure B for Steps 3-4

Step 3: Remove the top of the airbox by un-locking the four tabs (3) on the side of the airbox.

Step 4: Remove the stock air filter (4) and place it to the side



Refer to Figure C for Steps 5-6

Step 5: Using a 13mm socket, remove the two bolts and nut ⑤ from the bottom of the airbox and put them to the side for later use.

Step 6: Remove the stock airbox from the vehicle and place it to the side.



Figure D

Refer to Figure D for Steps 7-10

Step 7: Install the three supplied grommets (6) into the aFe Power airbox (7).

Step 8: Place the airbox into the vehicle and position the holes to line them up with the stock fender.

Step 9: Using the nut you removed in Step 5, secure the airbox by locating it on the rear mounting stud and hand tightening the nut on it. Then align the front mounting points and secure the airbox using the remaining hardware.

Step 10: Place the filter (8) into the housing and make sure it is secure.



Figure E

Refer to Figure E for Steps 11-14

- Step 11: Place the coupling (9) onto the smaller end of the tube and slip the supplied worm-clamps (10) over the coupler. (The order of the worm clamps do not matter)
- Step 12: Ensure that the worm clamp (11) supplied on the filter is loose.
- Step 13: Insert the larger end of the tube (12) into the filter flange, but DO NOT tighten the worm clamp.
- Step 14: Slip the other end of the coupler (13) over the throttle body.



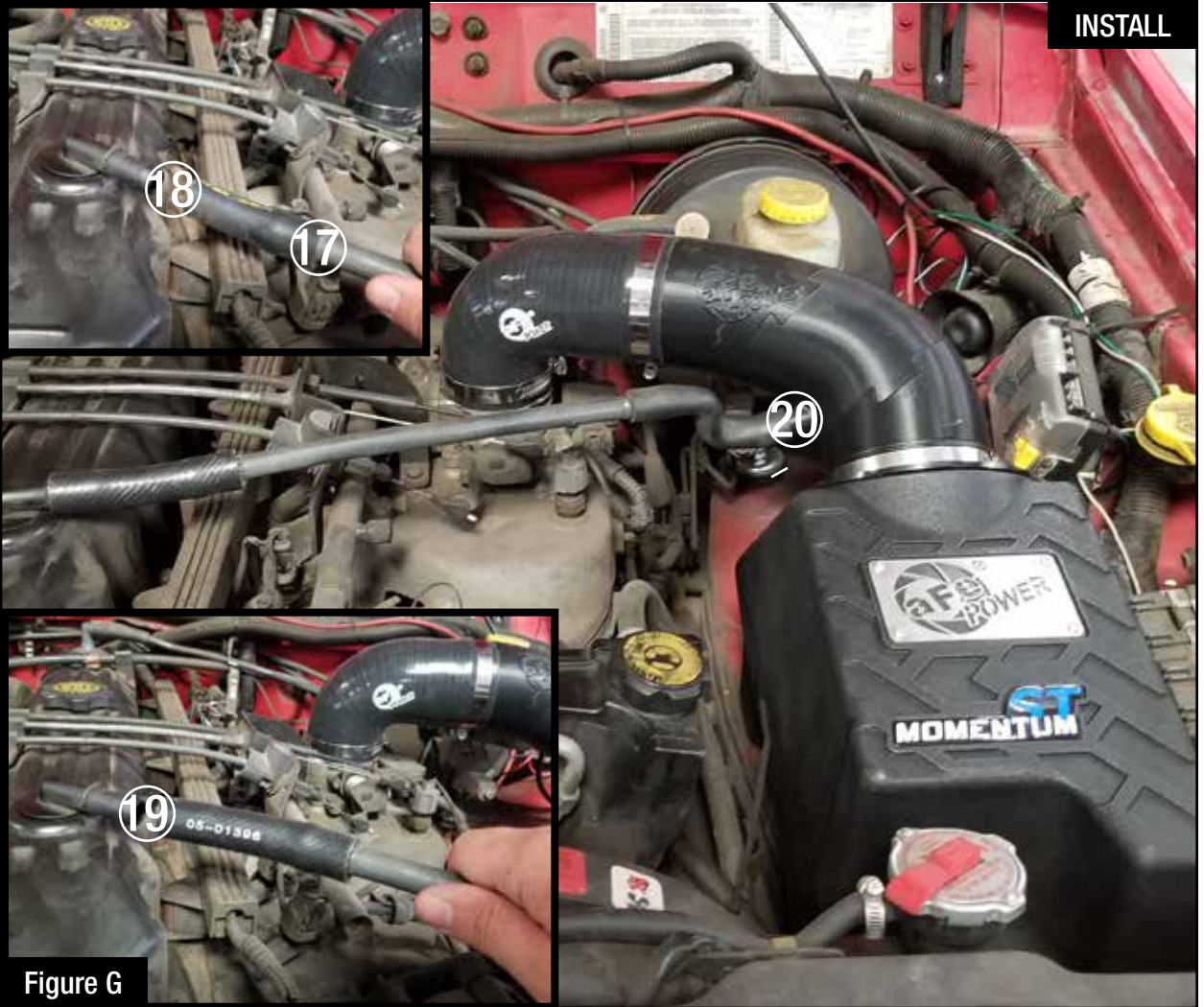
Figure F

Refer to Figure F for Steps 15-17

Step 15: Move one of the clamps (14) down to the throttle body and tighten it with an 8mm nut driver.

Step 16: Tighten the second clamp (15) where the coupler meets the intake tube.

Step 17: Now tighten the clamp (16) on the filter.

**Figure G****Refer to Figure G for Steps 18-20**

- Step 18: Remove the stock PCV line (17) from the fitting on the top of the valve cover then remove the stock rubber hose (18).
- Step 19: Install the supplied hose (19) between the stock PCV hard-line and the fitting on top of the valve cover, then install the other end of the line (20) over the fitting on the intake tube.
- Step 20: Make sure all clamps and hose connections are secured. Your installation is now complete! Thank you for choosing aFe POWER.

NOTE: Check all bolts, clamps, and hose connections after 100-200 miles.

Page left blank intentionally



Page left blank intentionally

Page left blank intentionally



Pro DRY S Air Filter



P/N: 21-90099

Pro 5R Air Filter



P/N: 24-90099

Pro-GUARD 7 Air Filter



P/N: 72-90099

Throttle Body Spacer



P/N: 46-35001

Pro DRY S Restore Kit



P/N: 90-59999

Blue Squeeze Restore Kit



P/N: 90-50501

Gold Squeeze Restore Kit



P/N: 90-50500

Direct Fit Catalytic Converter



P/N: 47-48006

Twisted Steel Headers



P/N: 48-46201

Cat-Back Exhaust System



P/N: 49-46225

Differential Cover



P/N: 46-70192-WL (w/ Oil)
46-70190 (RAW)

To purchase any of the items above, view airflow charts, dyno graphs, photos, and video; please go to aFepower.com.

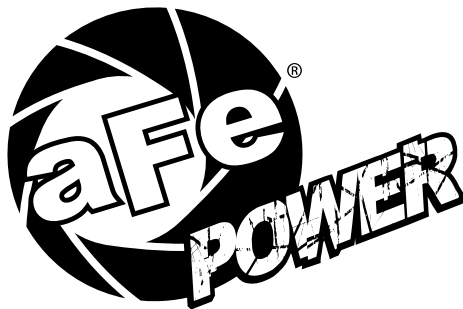
Warranty

General Terms:

- aFe warrants their products to be free from manufacturer's defects due to workmanship and material.
- This warranty applies only to the original purchaser of the product and is nontransferable.
- Proof of purchase of the aFe product is required for all warranty claims.
- Warranty is valid provided aFe instructions for installation and/or cleaning were properly followed.
- Proper maintenance with regular inspections of product is required to insure warranty coverage.
- Damage due to improper installation, abuse, unauthorized repair or alteration is not warranted.
- Incidental or consequential damages or cost, including installation and removal of part, incurred due to failure of aFe product is not covered under this warranty.
- All warranty is limited to the repair and/or replacement of the aFe part. To request Return Goods Authorization ("RGA"), email RGA@afepower.com or call (951)493-7100. Upon receipt of the RGA, you must return the product to the address provided in the RGA, freight prepaid and accompanied with a dated proof of purchase and the RGA. Upon receipt of the defective product and upon verification of proof of purchase, aFe will either repair or replace the defective product within a reasonable time, not to exceed thirty days.

Product Category	P/N Prefix	Warranty duration
Direct OE Replacement Filters	10, 11, 30, 31, 71, 73	Life of the vehicle
Racing Filters	18	1 year
Universal	21, 24, 72	2 years
Air Intake Systems	50, 51, 54, 55, 75	2 years
Exhaust Systems	49	2 years
Intercoolers & Intercooler Tubes	46-2	2 years
Intake Manifolds	46-1	2 years
Differential Cover	46-7	Life of the vehicle
Exhaust Manifolds	46	2 years
Throttle Body Spacers	46-3	2 years
Fluid Filters	44	90 days
Pre-Filters	28	2 years
Heavy Duty OE Replacement	70	2 years
PowerSports OE Replacement	81, 87	2 years
PowerSports Intake Systems	85	2 years

No other warranty expressed or implied applies nor is any person or advanced FLOW engineering authorized to assume any other warranty. Some States do not allow the exclusion or limitation of incidental or consequential damages or do not allow limitations on how long an implied warranty lasts, so the above limitations or exclusions may not apply to you. This warranty gives you specific legal rights, and you may also have other rights which vary from State to State.



advanced FLOW engineering, inc.
252 Granite Street Corona, CA 92879
TEL: 951.493.7100 • TECH: 951.493.7134
E-Mail: Tech@aFepower.com