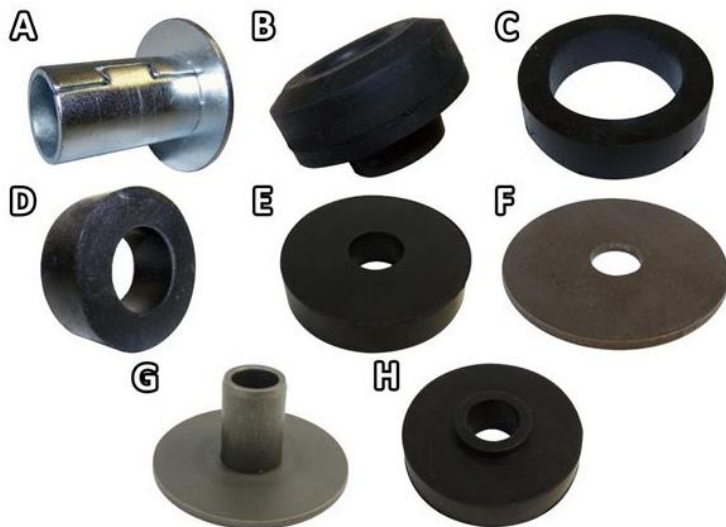




## Body Mount Kit

For 1979-1986 CJ-5, CJ-7, CJ-8 w/ Steel Body  
Part #: 5462446K



### Kit Contents:

Qty	Description	Replaces Part #
12	A Body Mount Sleeves	J5456734
12	B Upper Body Mount Bushings	J5462447
10	C 7/16" Lower Body Mount Bushings	J5462446
2	D 1" Lower Body Mount Bushings	J5459515
1	E Lower Grille Mount Bushing	J0971669
1	F Grille Mounting Washer	J0971672
1	G Grille Mounting Sleeve	J0971673
1	H Upper Grille Mount Bushing	J0972278

**Read all instructions carefully prior to starting installation.**

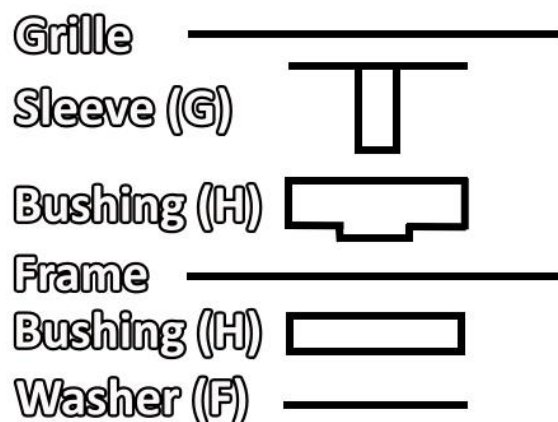
1. Ensure all components in the kit are accounted for.
2. Park the vehicle on a clean, flat, level surface, and chock the tires to prevent the vehicle from rolling.
3. Prior to installing the Body Mount Kit, we suggest a generous amount of penetrating oil is applied to the body mount hardware. This will help prevent any broken hardware.

**NOTE:** Ten of the twelve **Body Mount Sleeves (A)** need to be slightly modified. 1/4" will have to be trimmed off the sleeve end, making the length of the sleeve roughly 1-5/16". The two sleeves that don't need to be trimmed will be for the front body mount location.

### Grille Mount

4. Raise the hood.
5. Remove the grille mounting hardware. Set the nut, bolt, and flat washer aside and remove the lower grille mount washer and bushing. Unbolting the radiator's frame support rods may ease the process of moving the grille.
6. Place a piece of wood (2x4 or similar) between a floor jack and the grille. Raise the jack enough to remove the grille mount sleeve and upper grille mount bushing.
7. Clean any dirt, debris, and rust from the grille and the frame.
8. Clean the nut and bolt that was removed and apply a few drops of blue thread locker to threads of the bolt.
9. Install the **Grille Mount Sleeve (G)** and **Upper Grille Mount Bushing (H)** between the grille and the frame. Ensure the lower grille mount bushing sits properly in the hole in the frame.
10. Lower the floor jack, install the **Lower Grille Mount Bushing (E)** and **Grille Mounting Washer (F)** below the frame, and install using the factory grille mount bolt, nut, and flat washer. Leave the nut and bolt loose until installation of the remaining body mount bushings is complete. See the diagram for the order of parts.

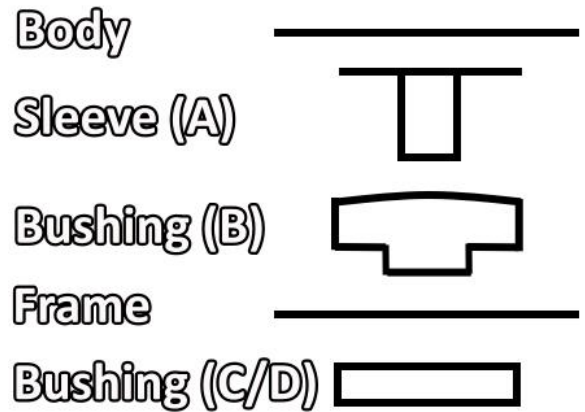
### Grille Mount Diagram



## Body Mounts

- Loosen all of the body mount bolts on one side of the vehicle.  
Remove all of the body mount bolts, washers, and lower body mount bushings from the other side. Retain the bolts and washers in the order they were removed for later use.
- Place a piece of wood (2x4 or similar) between a floor jack and the body on the side of the vehicle where the hardware has been removed. Raise the jack enough to remove the body mount sleeves and upper body mount bushings. Ensure that nothing gets stretched, pinched, damaged during this process.
- Clean any dirt, debris, and rust from the body and the frame.
- Place the **Body Mount Sleeves (A)** through the **Upper Body Mount Bushings (B)** and put in place of the old parts that were just removed. Remember to place the uncut **Body Mount Sleeve (A)** at the front body mount location only. See the diagram for the order of parts.
- Once all of the upper mounts have been replaced the body can be lowered back on to the frame.
- Clean the OE body mount bolt, flat washer, and fender washer. Apply a few drops of blue thread locker to the threads of the bolt. Replace the bolts or flat washers if necessary.
- Place the **Lower Body Mount Bushing (C or D)**, OE fender washer, OE flat washer, and OE bolt into the body mount back into their respective locations. The **1" Lower Body Mount Bushing (C)** belongs at the front body mount and the **7/16" Lower Body Mount Bushing (D)** belongs at the remaining body mounts. Do not torque at this time. See the diagram for the order of parts.
- Repeat Steps 11-17 for the other side of the body.
- Once all body mounts are installed, torque all bolts to OE specifications. If you removed the radiator frame support bolts, ensure those are torqued as well.

## Body Mount Diagram



3/8" Bolts – 24 ft. lbs.

7/16" Bolts – 36 ft. lbs.

- Re-torque all hardware after the first 500 miles of driving.

**NOTE:** This kit includes all of the body mounts for the CJ-8 Scrambler. If the kit is installed on a CJ-5 and CJ-7 there will be 2 extra **Body Mount Sleeves**, **Upper Body Mount Bushings**, and **7/16" Lower Body Mount Bushings** left over.



*While every attempt is made to ensure that the information contained in these instructions are correct, no liability can be accepted by the authors for loss, damage or injury caused by any errors in, or omissions from the information given. All service should be performed by qualified mechanics. Crown Automotive Sales Co., Inc. cannot be held responsible for any mechanical work performed. Standard and accepted safety precautions and equipment should be used in every procedure.*