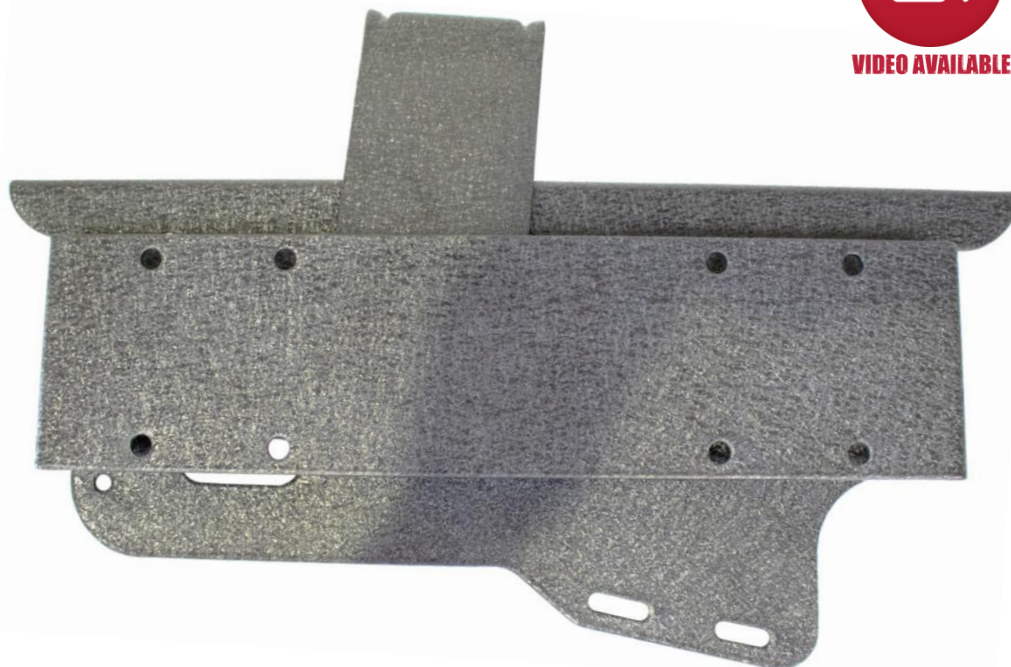




ARB (Pg. 1-3)



VIAIR (Pg. 4-5)



#### REQUIRED TOOLS (ARB)

Socket/Ratchet  
T47 Torx Bit  
10mm Socket/Wrench  
4mm Allen Key

#### REQUIRED TOOLS (VIAIR)

Socket/Ratchet  
T47 Torx Bit  
8mm Socket/Wrench  
3mm Allen Key  
Pliers

#### KIT CONTAINS

ARB & VIAIR Compressor Bracket  
ARB Compressor Bracket  
ARB Switch Mount  
M6 12mm Washer  
M5 10mm Washer  
M6 11.8mm Split Lock Washer  
M6 20mm Hex Head Screw  
M6 Nylon-Insert Locknut  
M5 Nylock Locknut  
M8 30mm Flanged Hex Head Screw  
M6 20mm Button Head Hex Drive  
Screw  
M5 30mm Button Head Hex Drive  
Screw

#### QTY

1  
1  
1  
16  
8  
14  
12  
2  
4  
2  
2  
4





## INSTALLATION INSTRUCTIONS

**PART No.**

**FB25464**

### 2018+ Jeep® JLU Wrangler Rear Trunk Compressor Mount

#### ARB COMPRESSOR INSTALLATION:

##### 1) PREPARING FOR YOUR INSTALL

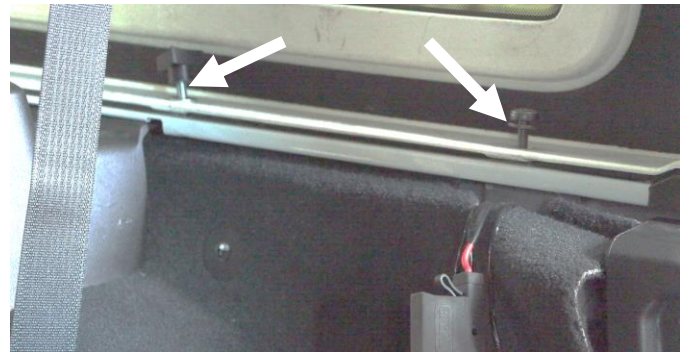
Pull the carpet back and unscrew the nob located on the back of your rear driver's side seat. Push the carpet back into place.



With a T47 torx bit, remove the two torx screws.

If you have our Fishbone Storage Rack (FB25113), remove the thumb screw.

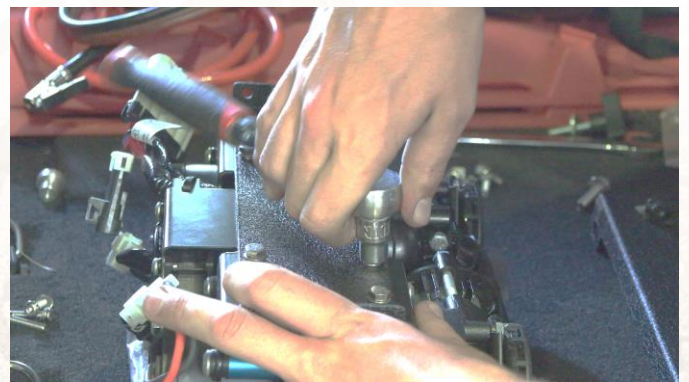
**NOTE:** The compressor mount will not work with rack installed.



##### 2) INSTALL YOUR COMPRESSOR'S BRACKETS

Flip your air compressor onto its front face. Take your ARB Compressor Bracket with the ridges faced upward and line it up with the holes on the back of your air compressor.

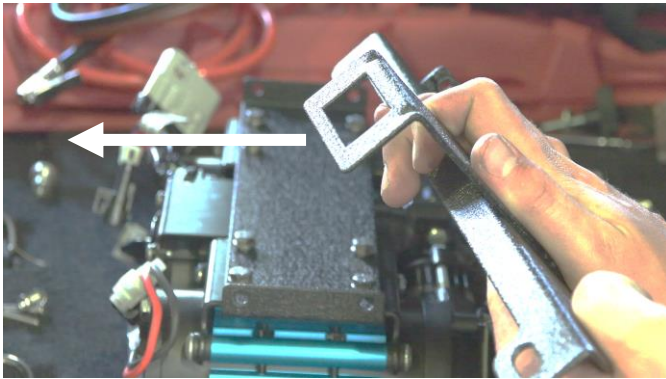
Using a 10mm socket or a wrench, screw in the eight M6 screws, lock washers, and washers.



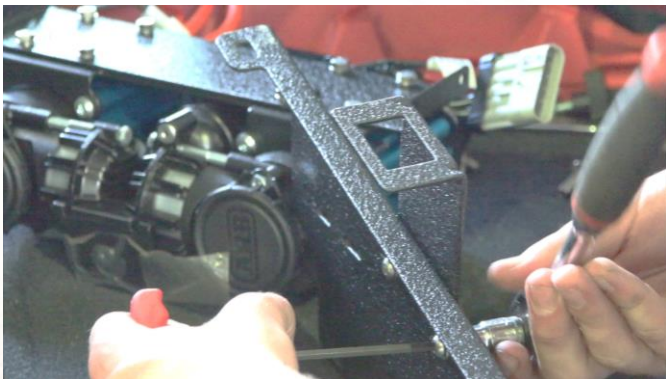


## 2018+ Jeep® JLU Wrangler Rear Trunk Compressor Mount

After screwing in the included hardware, take your main plate and hold the switch mount bracket up to the main bracket. The switch mount bracket and the mounting holes on the top of your main plate should be facing the window of your Jeep.



Insert the two included 20mm M6 button head screws into the two holes for the switch bracket. The head of the button head screws should face towards the carpet. Once in place, screw on the nuts and washers with a 4mm allen key and a 10mm wrench.



### 3) INSTALL THE AIR COMPRESSOR

Slide your ARB air compressor onto the bracket with the air filters facing upwards. The bracket's ridges on your air compressor should be on the outside of the bracket.



Once you have the bracket holes aligned, screw in the M6 20mm hex screws on each end of the bracket with a 10mm socket or wrench.





## 2018+ Jeep® JLU Wrangler Rear Trunk Compressor Mount

After installing your hardware, hold the compressor mount up to the front two hard top mount holes and slide the compressor mount between the hard top and the Jeep tub.

Once you have your bracket lined up, install the two included 30mm hex head screws using a 13mm socket.



### 5) ENJOY YOUR NEW ARB AIR COMPRESSOR MOUNT!



### 4) INSTALL THE AIR COMPRESSOR'S SWITCH

Once you have everything secure and in place, run your wiring up through the hole on your ARB Switch Mount and connect it to the switch. Push the switch into the mount hole. If your compressor mount didn't include one, disregard this step.

The wiring can be run behind the carpet to various locations



## 2018+ Jeep® JLU Wrangler Rear Trunk Compressor Mount

### VIAIR COMPRESSOR INSTALLATION:

#### 1) PREPARING FOR YOUR INSTALL

Pull the carpet back and unscrew the nob located on the back of your rear driver's side seat. Push the carpet back into place.



With a T47 torx bit, remove the two torx screws.

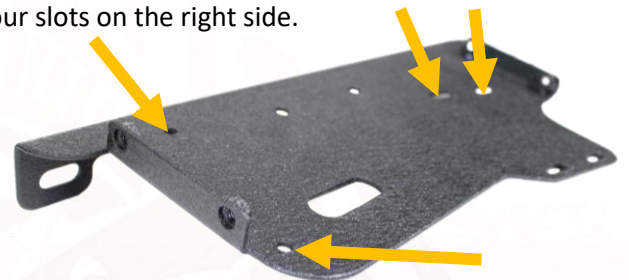
If you have our Fishbone Storage Rack (FB25113), remove the thumb screw.

**NOTE:** The compressor mount will not work with rack installed.



#### 2) INSTALL THE AIR COMPRESSOR

Hold your VIAIR air compressor up to the main plate using the holes to help with the alignment. We will be using the two holes on the far-left side and the four slots on the right side.



**NOTE:** You'll want to make sure your filter is placed on the side of the mounting plate with the slotted mounting holes. Otherwise, you will have issues with the filter running into the pillar in your vehicle.

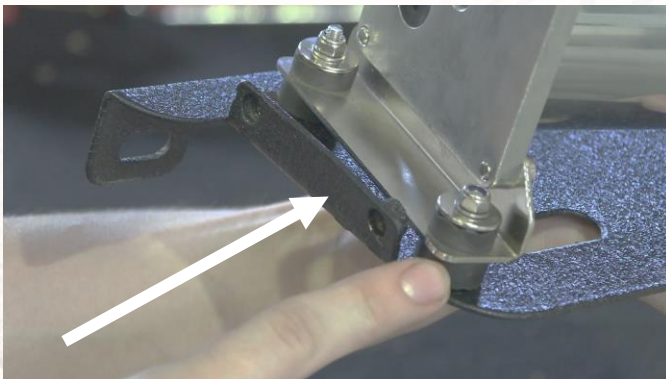


## 2018+ Jeep® JLU Wrangler Rear Trunk Compressor Mount

With an 8mm socket or wrench and a 3mm allen key, install the included M5 hardware to mount your VIAIR air compressor.



**NOTE:** You may need to slightly bend the bracket on the left end of your main plate to give the air compressor some room.



After installing your hardware, hold the compressor mount up to the front two hard top mount holes and slide the compressor mount between the hard top and the Jeep tub.

**NOTE:** You may need to wiggle your bracket into place due to it being a snug fit.



Once you have your bracket lined up, install the two included 30mm hex head screws using a 13mm socket.



**3) ENJOY YOUR NEW VIAIR AIR COMPRESSOR MOUNT**