



Installation Instructions for

**817819**

**AMT CAT-BACK EXHAUST  
FITS: 2018-2019 JEEP WRANGLER JL  
WITH 3.6L ENGINE**

**REVIEW FLOWMASTER SYSTEM:**

1. Please take a moment to read and understand these instructions before installing your Flowmaster performance system. Use the parts drawing and list to verify exhaust system contents.

**NOTE:** Some steps in the following instructions may contain two images. The first identifies location of action performed, the second identifies the action performed.

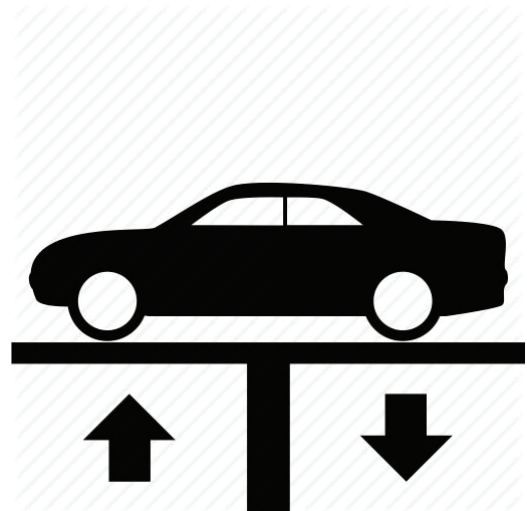
PART NO.	DESCRIPTION	QTY.
15192S	Resonator	1
86505S	Pipe, Front	1
86506S	Pipe, Over-axle	1
842583-511	Muffler	1
PK964	Hardware Pack	1
MC250BS	•2-1/2" Stainless Band Clamp	3
HW502	•7/16" Hanger Keeper 1"	3

**REMOVE STOCK EXHAUST SYSTEM:**

**WARNING:**

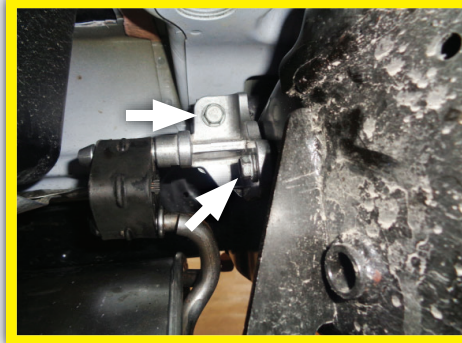
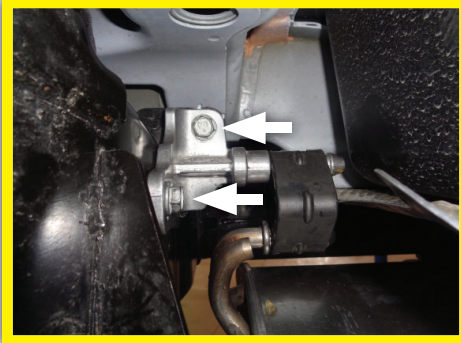
Avoid serious burns! Allow the exhaust system to cool completely before removing the factory exhaust system.

2. Raise the vehicle up on a hoist or rack to working height. If you don't have access to a hoist or rack, raise the vehicle and support securely with jack stands. Use penetrating lubricant as necessary to ease disassembly.

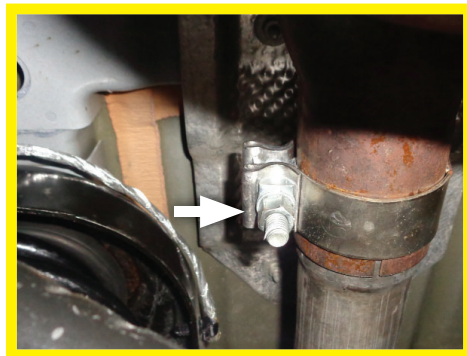


**NOTE:** Use stands as necessary to support parts as you detach them from your vehicle.

3. Remove bolts (x4) securing muffler mounts on driver and passenger side. Retain for re-use.



4. Secure and support muffler, then loosen clamp at muffler inlet connection above rear axle.



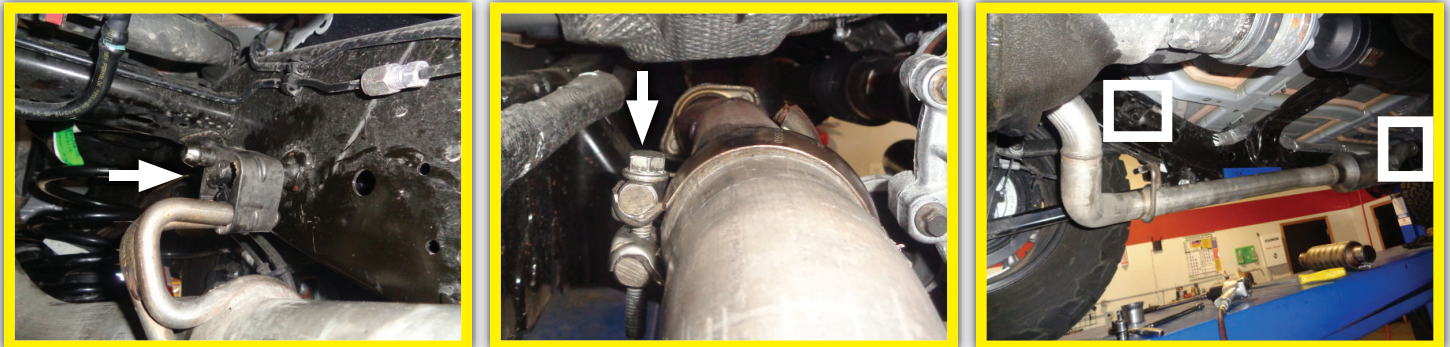
5. Remove muffler from vehicle.



6. Place stock muffler next to Outlaw **muffler (842583-511)** oriented in the same direction. Then transfer driver and passenger side mounts over.



7. Remove wire hanger on resonator assembly from isolator, and loosen bolt on clamp at resonator inlet.



8. Remove resonator assembly from vehicle and retain clamp for re-use.

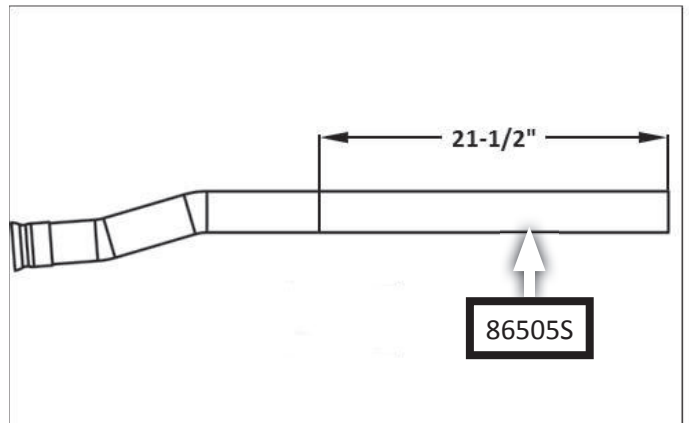


## INSTALL FLOWMASTER EXHAUST SYSTEM

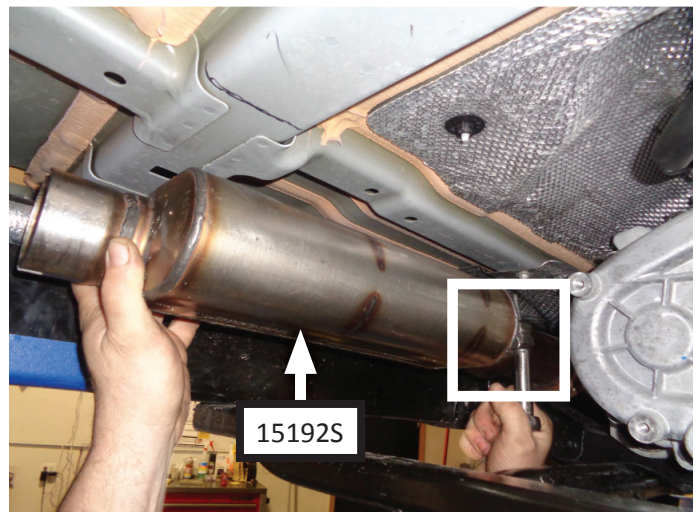
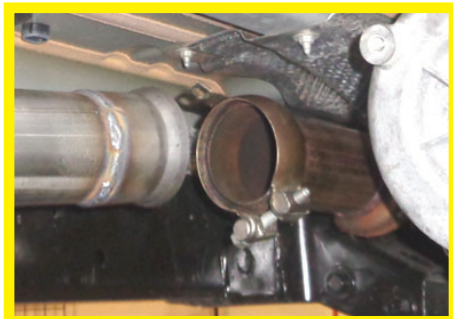
- Remove nuts from stock and Flowmaster clamps, apply anti-seize compound to bolts and re-install nuts.



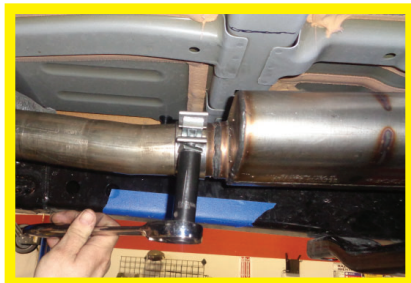
- FOR TWO-DOOR VEHICLES ONLY**, cut 21-1/2" off the rear end of front pipe (86505S).



- Place factory clamp (removed step 8) over outlet of factory pipe, connect **resonator (15192S)** to factory pipe, then tighten clamp enough to allow for adjustment.



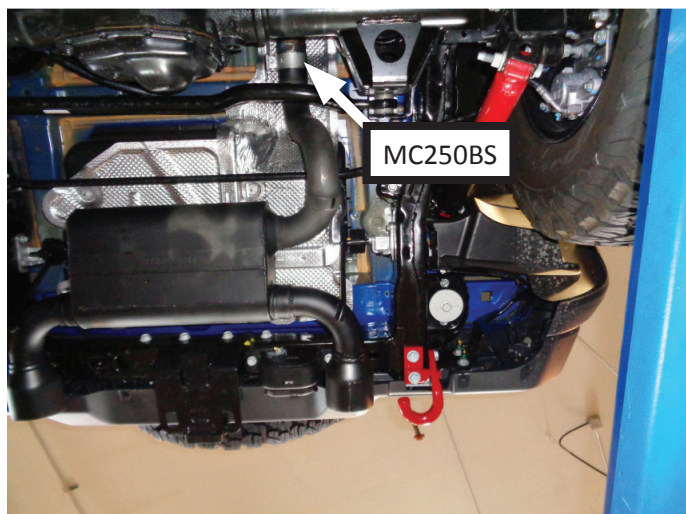
12. Place **clamp (MC250BS)** onto outlet of resonator. Connect front pipe to resonator. Make sure the bend on front pipe is oriented upwards as shown. Tighten clamp just enough to allow for adjustment.



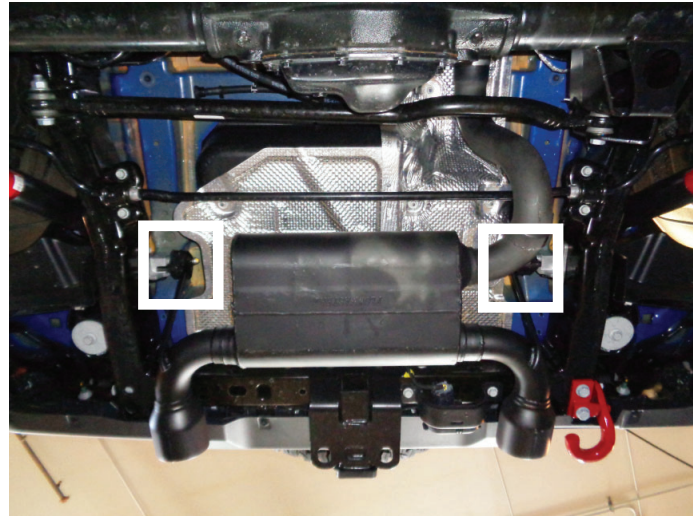
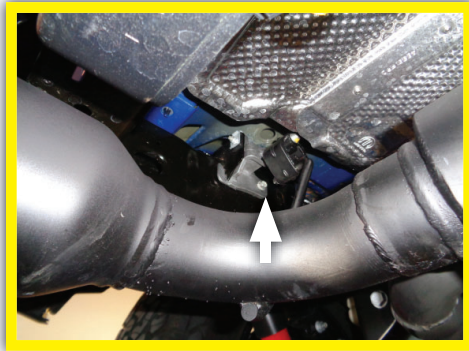
13. Place **clamp (MC250BS)** onto inlet of **over-axle pipe (86506S)**. Connect over-axle and front pipes while pushing wire hanger into rubber isolator on vehicle. Tighten clamp just enough to allow for adjustment.



14. Place **clamp (MC250BS)** onto inlet of muffler. Connect muffler to over-axle pipe. Support muffler and ensure all connections are completely seated.



15. Place muffler hanger mounts into position, then reinstall and tighten factory bolts. (removed steps 2 and 3).



16. Adjust installation to provide a satisfactory fit. Maintain a minimum of 1/2" clearance around all components of the exhaust system, keeping in mind suspension, travel and vibration. After making any required adjustments, securely tighten the clamps.
17. Slide **7/16" hanger keepers (x3 HW502)** onto the hangers to prevent components from slipping out of their rubber mounts.
18. We recommend applying a one inch tack weld to all slip-fit connections for a more secure installation. You may also apply high temperature paint over welded areas to prevent rust and premature corrosion.



Congratulations, the installation of your FLOWMASTER performance exhaust system is now complete!

**IMPORTANT: RETAIN THESE INSTRUCTIONS FOR FUTURE REFERENCE**

Flowmaster maintains a highly trained technical service department to answer your questions, provide additional product information, and offer various recommendations.





Installation Diagram for

**817819**

**AMT CAT-BACK EXHAUST  
FITS: 2018-2019 JEEP WRANGLER JL  
WITH 3.6L ENGINE**

