



XCELERATOR

INSTALLATION INSTRUCTIONS

Techline: 1-(800) 535-1161

Website: www.jetchip.com | Email: customerservice@jetchip.com

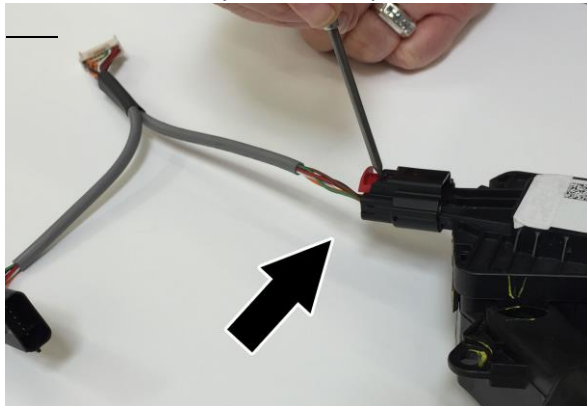
Follow ALL the steps below to install your Jet Xcelerator, be sure to follow all safety precautions when working on any vehicle!

For video instructions go to www.youtube.com/jetperformanceproducts

Steps:

1. MOST IMPORTANT: Turn The Vehicle OFF. Keep The FOB Key 10-15 Feet Away From Vehicle. LET VEHICLE SIT FOR A MINIMUM OF 5 MINUTES BEFORE INSTALLING, To Allow The System To Fully Shut Down.

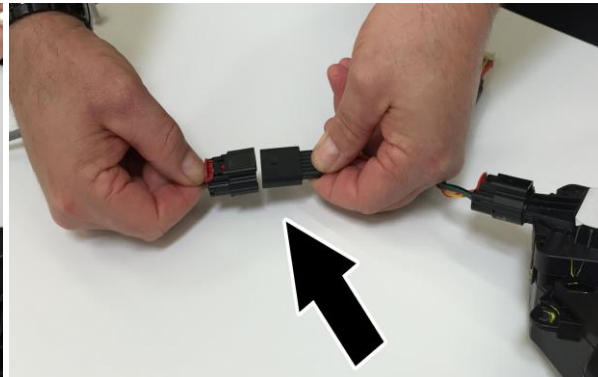
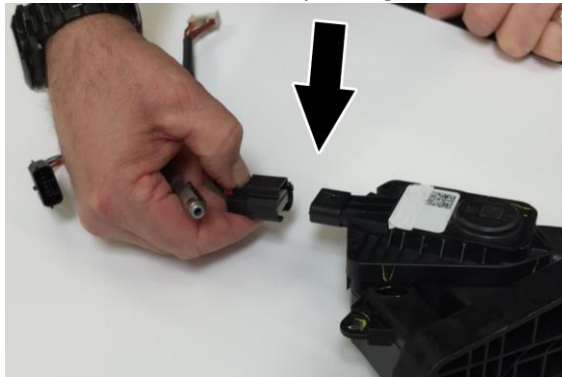
2. At the accelerator pedal, locate the connector and unplug it. Most connectors have a safety latch/button that you need to pull back to unlock and press down to release the Connector. DO



NOT

e. For a visual example of how the connector
harness supplied with the Xcelerator.

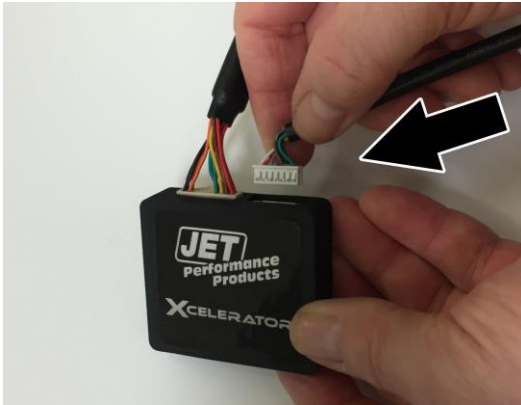
3. Using the supplied "Y" wiring harness, plug one end into the accelerator pedal connector and the other end into the factory wiring harness connector.



4. Plug the small connector of the “Y” harness into the Jet Xcelerator.



5. Connect the controller cable to the Jet Xcelerator.



(Finished Assembly)

6. Find a place under the dashboard to anchor/attach the Jet Xcelerator with the supplied tie wraps and/or Velcro to keep the Xcelerator away from the gas pedal. **ADVISORY: DO NOT** attach the Xcelerator box to any components that will generate heat. Use provided velcro and/or zip ties to mount the controller under your dash.

7. Reconnect the Negative battery cable.

8. Start the vehicle to verify that there are no service lights lit on the dash and test the accelerator to make sure its functioning properly. Some vehicles may set a temporary check engine light, this will go away in a short period of driving.

Note: The LED position indicator screen will shut off when the car is not in use. There may be a delay in some vehicles after the key is shut off until the indicator light goes out.

9. Time to Drive: Select 0-4 for Performance Stages by pushing the + and – buttons.

10. Activate Valet Mode: Select Stage 5. (Throttle will be limited).

11. Activate Security Mode: Put the car in Park, hold down the (+ and –) at the same time and the indicator will move to Stage 6. To disengage Security Mode, simply hold down (+ and –) again and the indicator will default to your last Stage selected. (Throttle will be Nonresponsive).

12. Controller Settings:

Stage 0: Stock (OEM) | Stage 1: Semi Sport | Stage 2: Sport | Stage 3: Ultra Sport
Stage 4: Track | Stage 5: Valet | Stage 6: Security