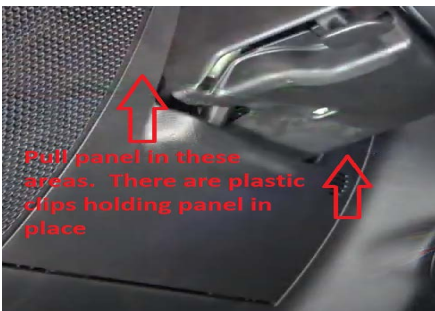


Before getting started:

Read this entire guide. This kit comes with a T-harness and is a complete plug and play system. You will not need to make any hardwired connections. The only disassembly needed will be the steering column covers. **FOR AUTOMATIC TRANSMISSION VEHICLES ONLY.** This kit requires OEM remote keyless entry. For vehicles without remote keyless entry, use Kleinn part # RSJKLR1.

Step 1: Preparation

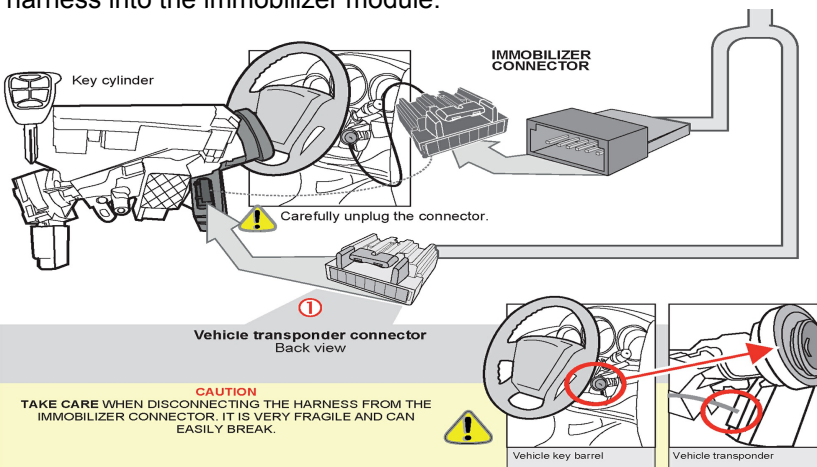
Begin by removing the plastic panel below the steering wheel and then the plastic around the steering wheel column. Remove the three screws shown below, loosen the tilt lever and pull the lower plastic panel down. In 2007-2015 Wranglers the steering cover will unsnap and you can remove plastic. Late 2016 & up models have a lip that goes under the steering wheel. It is not necessary to drop the steering column! After removing the screws that secure the lower steering column cover, loosen the cover and insert a plastic pry tool (see image below on right) between the cover and steering wheel. Carefully use the pry tool to push the cover forward and it will pop out.



Step 2. Plug in the T-Harness

Locate the immobilizer - it's a plastic box next to the key cylinder. CAREFULLY remove the immobilizer plug. The module is delicate. If bent or forced out at an angle, the module could be damaged resulting in needing to re-solder contacts or dealer replacement.

Insert the immobilizer plug into the female connector of the t-harness, then carefully insert the male connector from the t-harness into the immobilizer module.

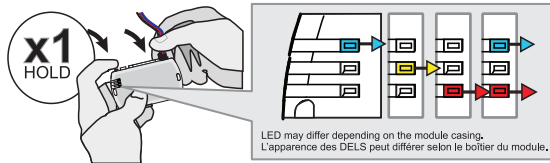


Step 3: Programming

Your remote start module now needs to be paired to your vehicle. Before starting the programming sequence, unplug all connectors from the remote start. Instructions for programming are below. Here are two important tips to help you avoid common mistakes:

- While holding the program button down on the module (step 1 in the programming instructions), insert the black end of the data cable WITHOUT the locking tab into the black receptacle.
- Step 2 in the instructions is all about the timing. The LED lights will start to cycle colors and continue to cycle until you let go of the button. Release the button at the moment the LED is BLUE. If done correctly the LED will remain solid BLUE when you release the button. If it's not solid BLUE, unplug the 4-pin connector and start over.

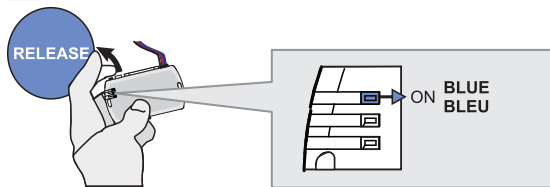
1



Press and hold the programming button:
Connect the 4-PIN Data-link harness (Black connector).

↳ The Blue, Red, Yellow and Blue & Red LEDs will alternatively illuminate.

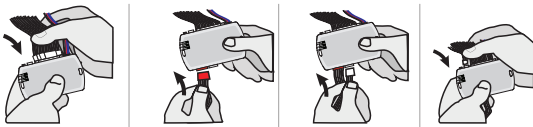
2



Release the programming button when the LED is BLUE.

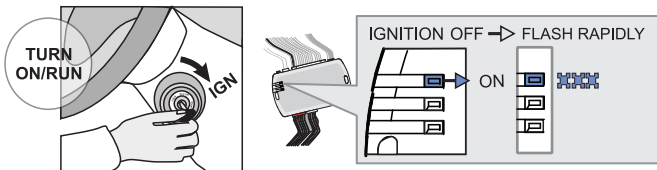
If the LED is not solid BLUE disconnect the 4-Pin connector (Data-Link) and go back to step 1.

3



Insert the required remaining connectors.

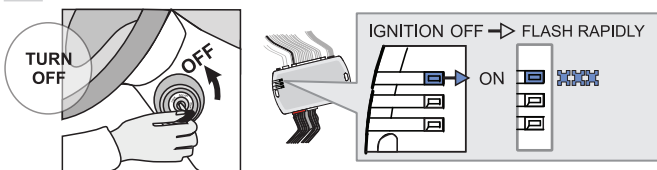
4



Turn the key to the Ignition ON/RUN position.

↳ The BLUE LED will flash rapidly.

5



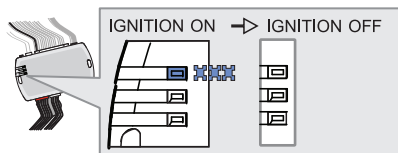
Turn the key to the OFF position.

↳ The BLUE LED will flash rapidly.

6



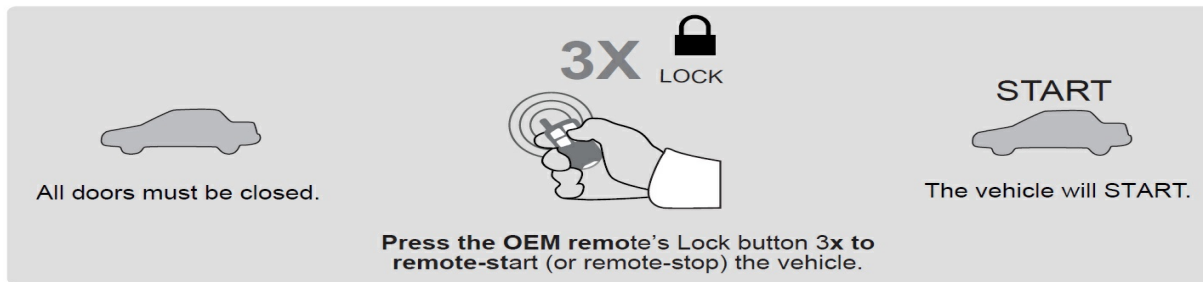
Press the LOCK button on the vehicles OEM remote.



↳ The BLUE LED will turn off.

Programming is now complete

Step 4: Test the system

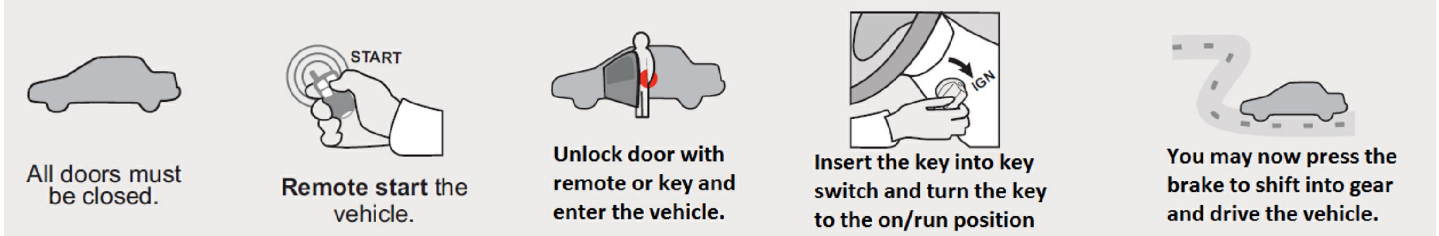


The engine will remain running for the programmed run time of 15 minutes or until the brake pedal is pressed. The engine can also be turned off by pressing the lock button 3 more times on your factory remote.

Step 5: Button it up

- Gather up all the wiring and neatly bundle it together with zip ties or electrical tape. There is space near the base of the steering column for the module. Use zip ties to secure it. **MAKE SURE THE MODULE AND WIRES DO NOT INTEREFE WITH ANY MOVING PARTS.**
- Replace the steering column cover
- Test the system as you reinstall the panels in your vehicle to make sure you do not pull something loose or pinch a wire. Be careful not to run a screw through a wire or pinch a wire while reinstalling panels.

REMOTE STARTER FUNCTIONALITY



Common Troubleshooting Questions for This Product

Issue: The module programmed as expected, but nothing happens when I press "Lock" 3 times.

Solution: Make sure you are doing your "Lock" presses about 1 second apart. If you do them too quickly, the system will not read them.

For additional technical support call Kleinn at (520) 579-1531