



**LINKSWELL**  
TECHNOLOGY TOGETHER



***2018-UP Jeep Wrangler  
2020-UP Jeep Gladiator  
T-Style Radio Replacement  
Installation Manual***

# Part 1. Factory Radio Removal

## Tools Required:

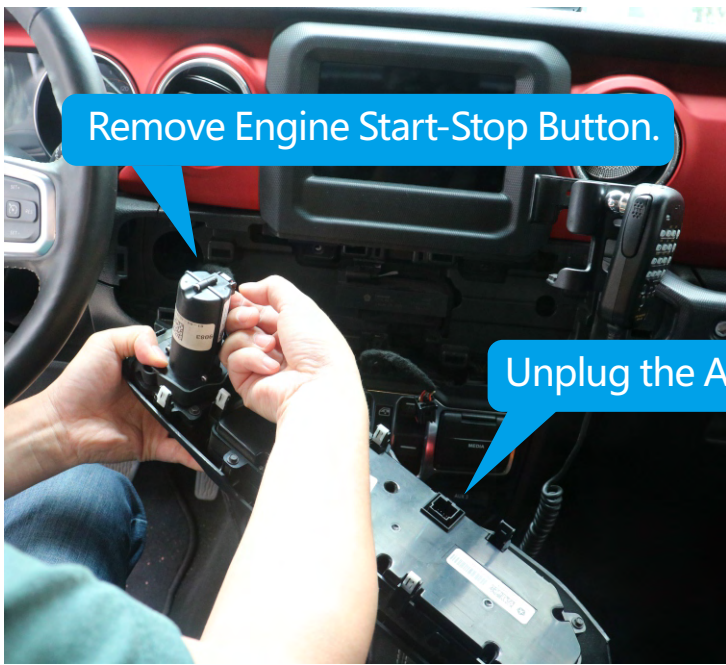
- 1, Pry Tools
- 2, Driver Set



## Climate Panel Removal



Pry and remove the AC control panel.



Remove Engine Start-Stop Button.



Unplug the AC Connecty

Remove Factory Radio Panel.



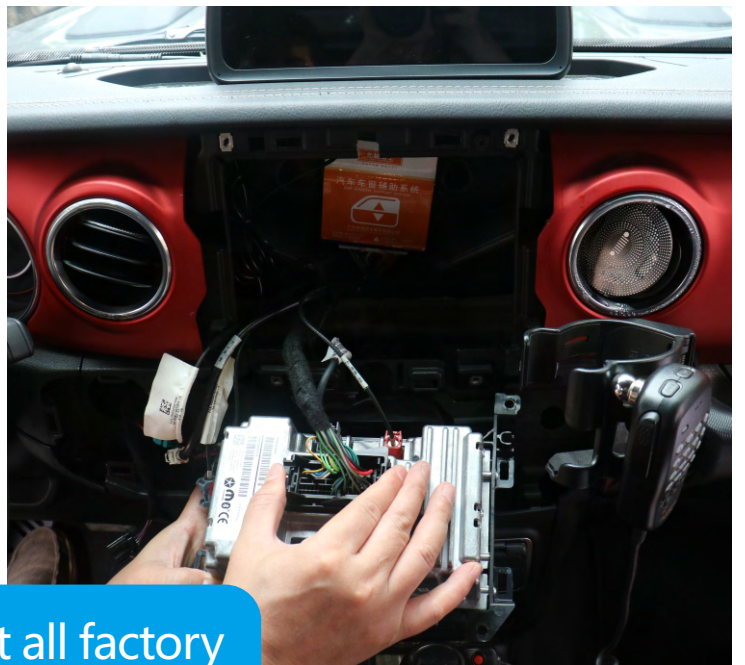
Use 7MM Socket to unscrew the 2 screws.



Pull and unclip the radio bezel.



Use 7MM Socket to remove the radio screen



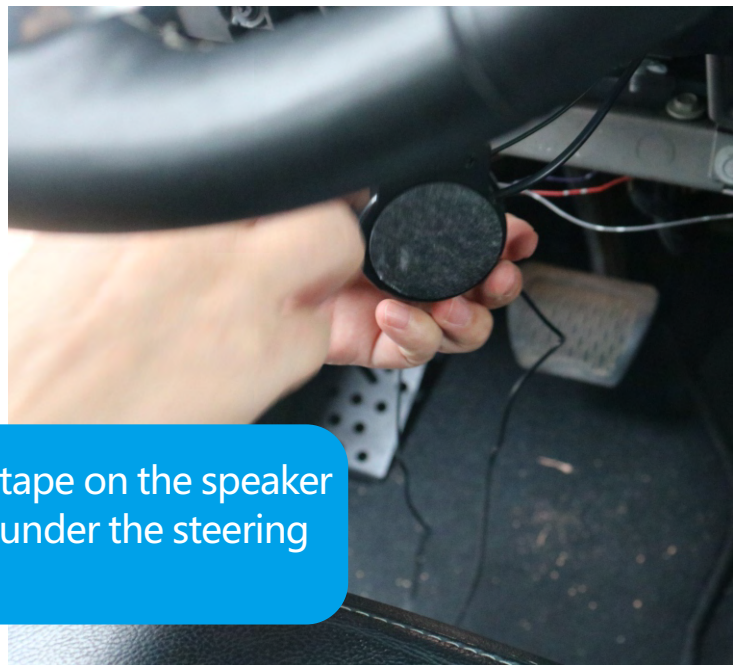
Disconnect all factory radio connectors.



# Part 2: Wiring and Installation.

## Install Mic. and Speaker.



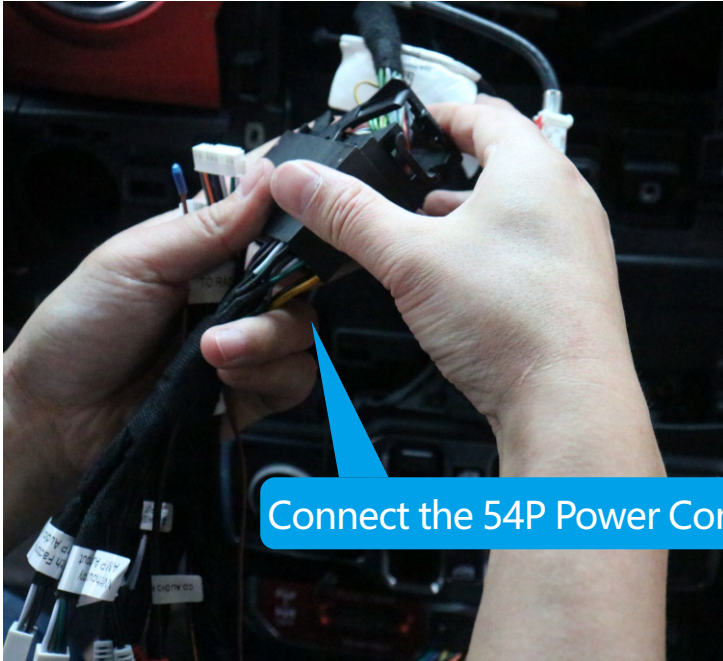


Remove the tape on the speaker and install it under the steering wheel dash.

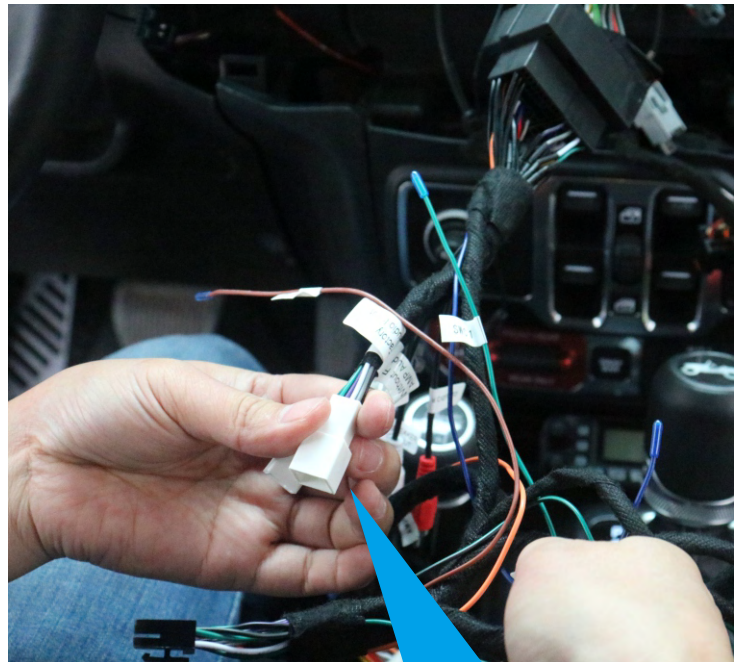
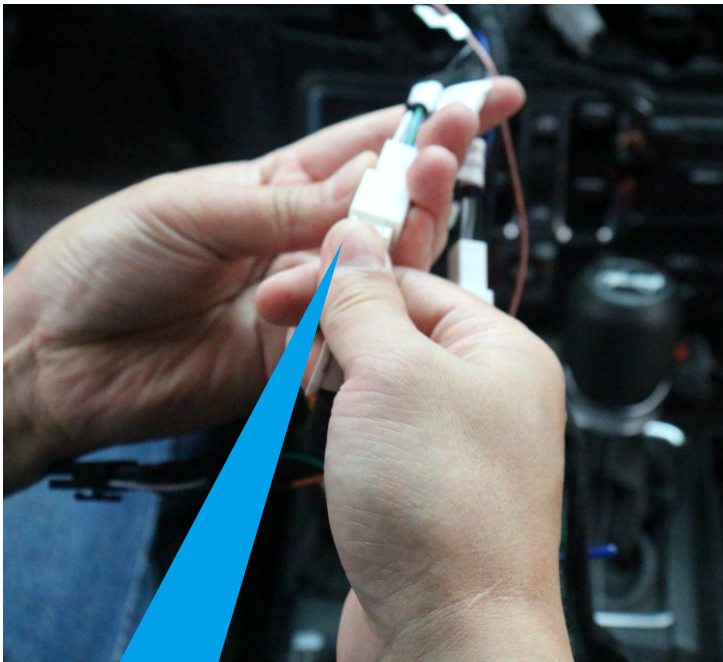
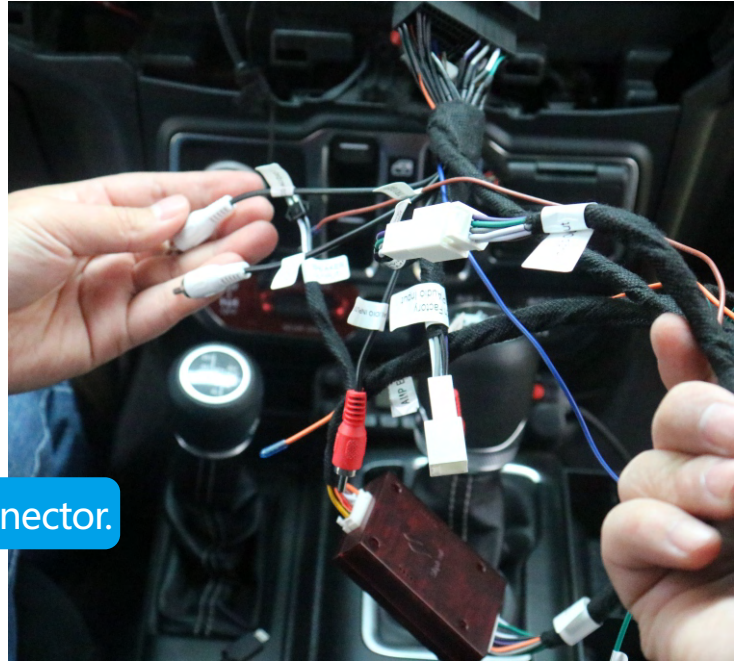


Fish and run the Mic. and Speaker Cables from under the Steering Wheel to Radio Console.

# Wiring

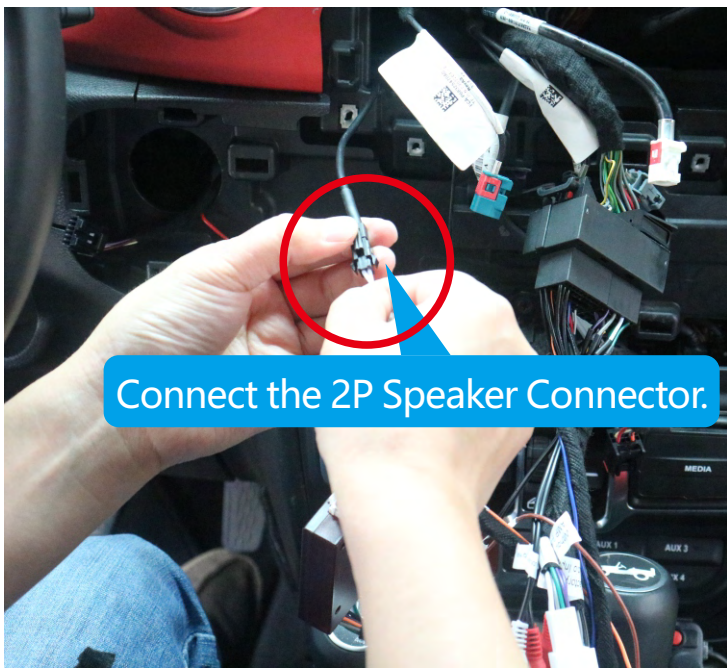


Connect the 5P Power Connector.



Connect the Audio Connector.

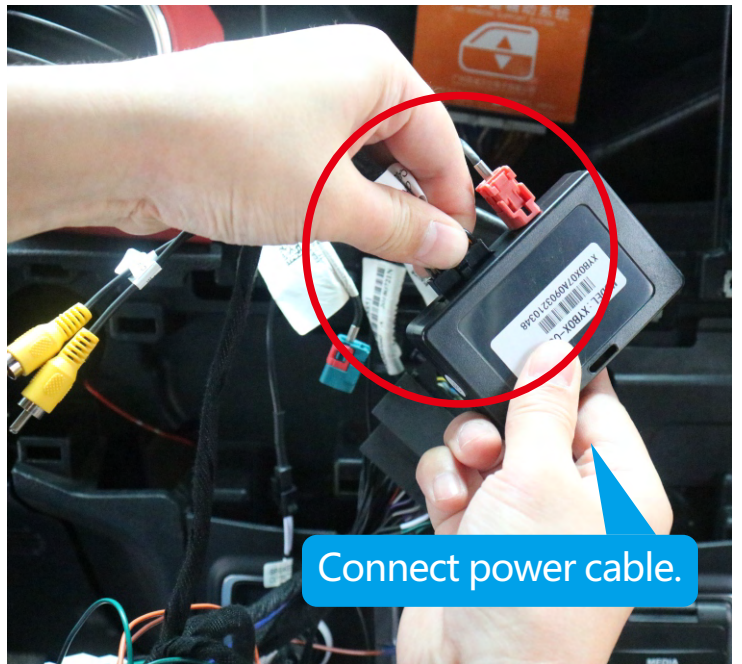
Note: Connect 'With AMP Speaker' if the car Equipped with Factory Amp. If not, connect to Without AMP Speaker



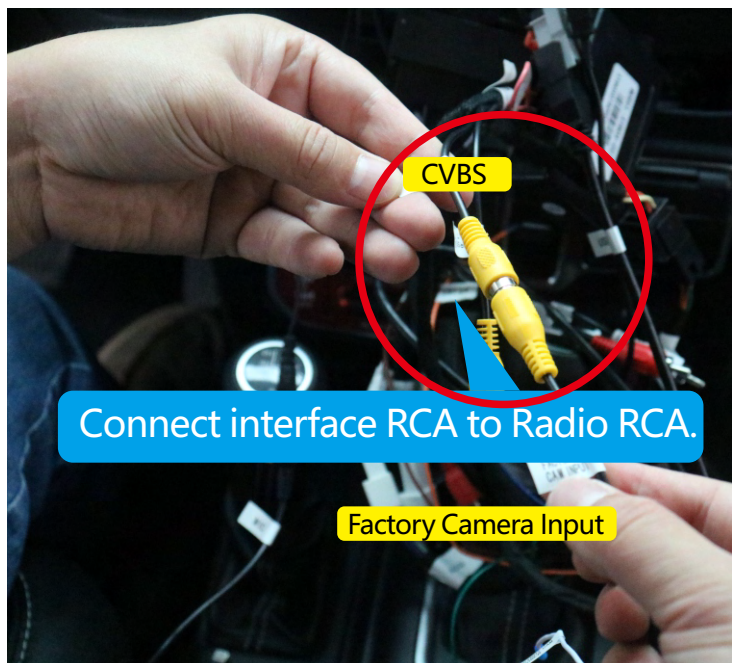
Connect the 2P Speaker Connector.



Connect factory Camera connector(Red) to camera interface box(Blue).



Connect power cable.



Connect interface RCA to Radio RCA.

Factory Camera Input

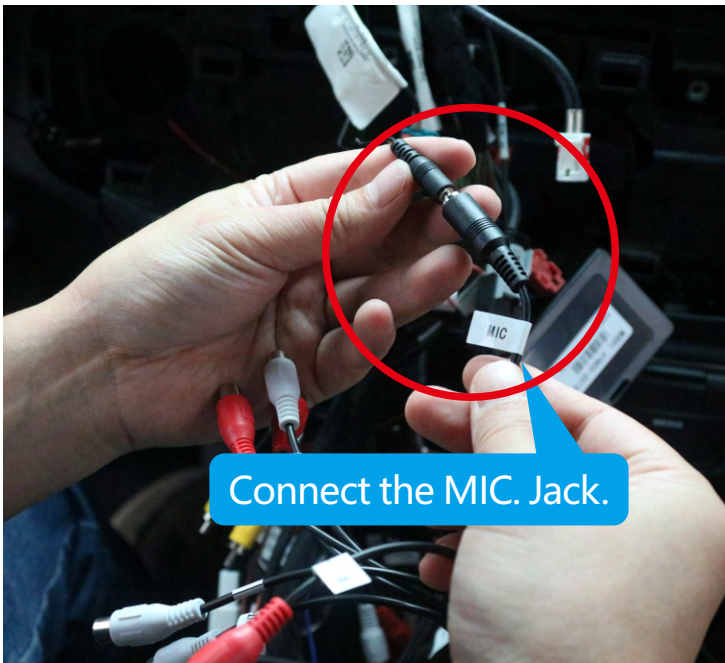
The Pink Interface Pin Wire is for selecting AHD Or CVBS signal. Cut it for AHD Signal if radio Supports AHD



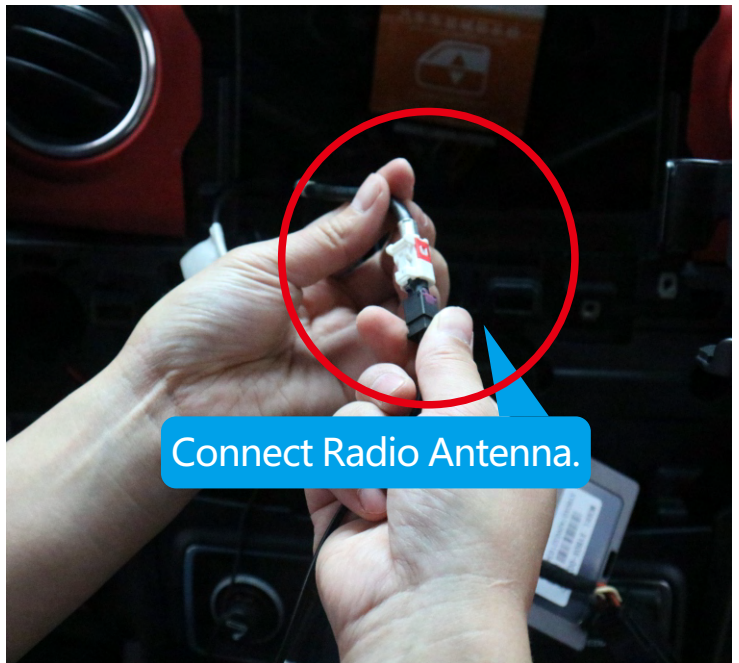
Connect the AC Connector.



Connect factory USB.



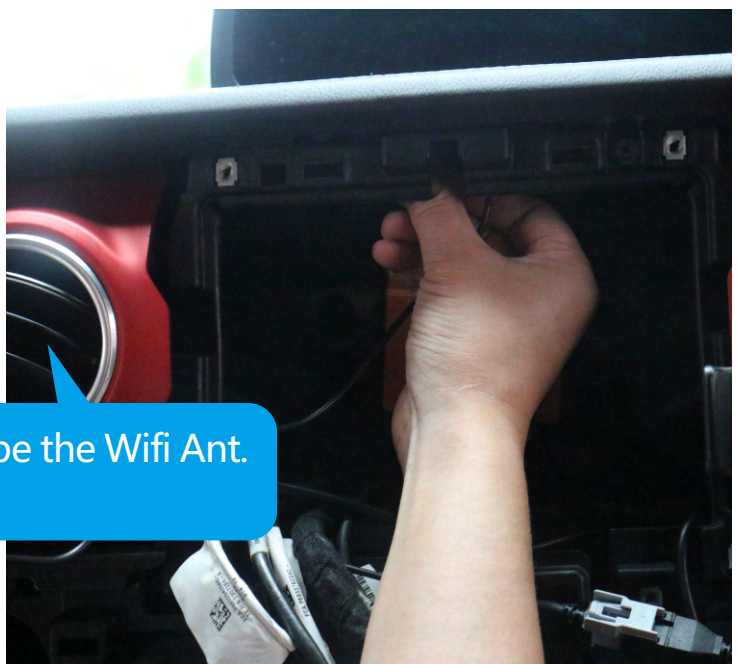
Connect the MIC. Jack.



Connect Radio Antenna.

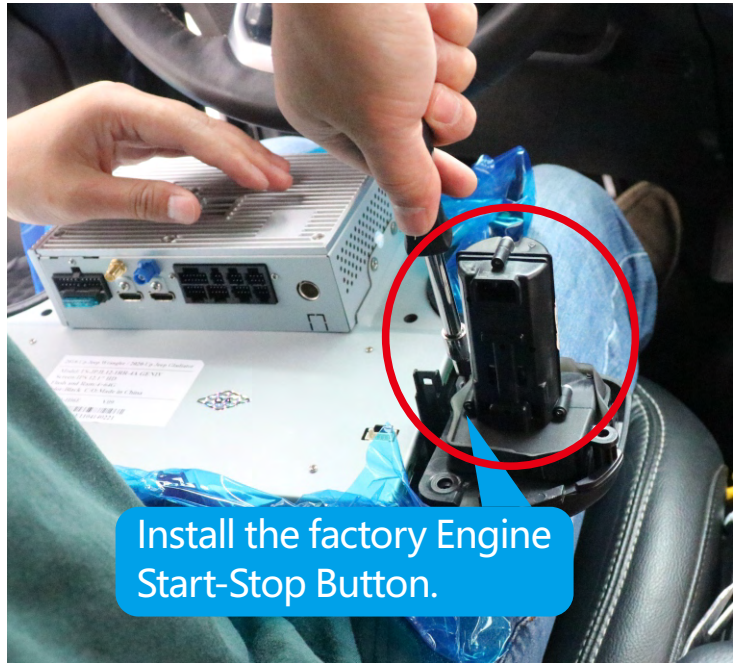


Connect and tape the Wifi Ant. under dash.

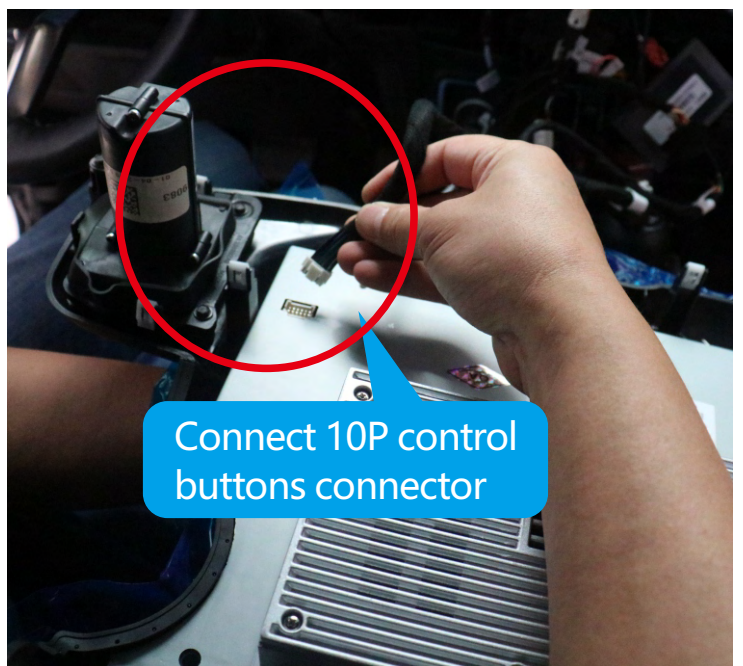




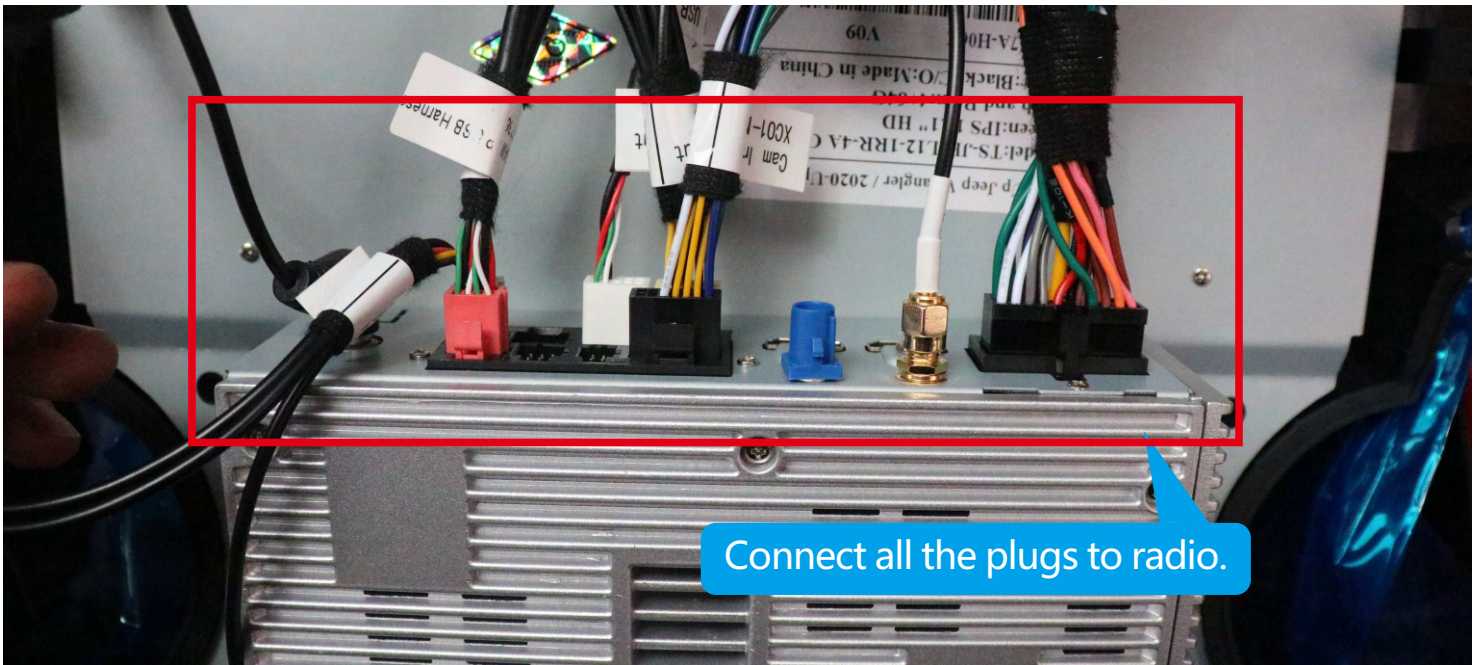
Install the L/R Brackets.



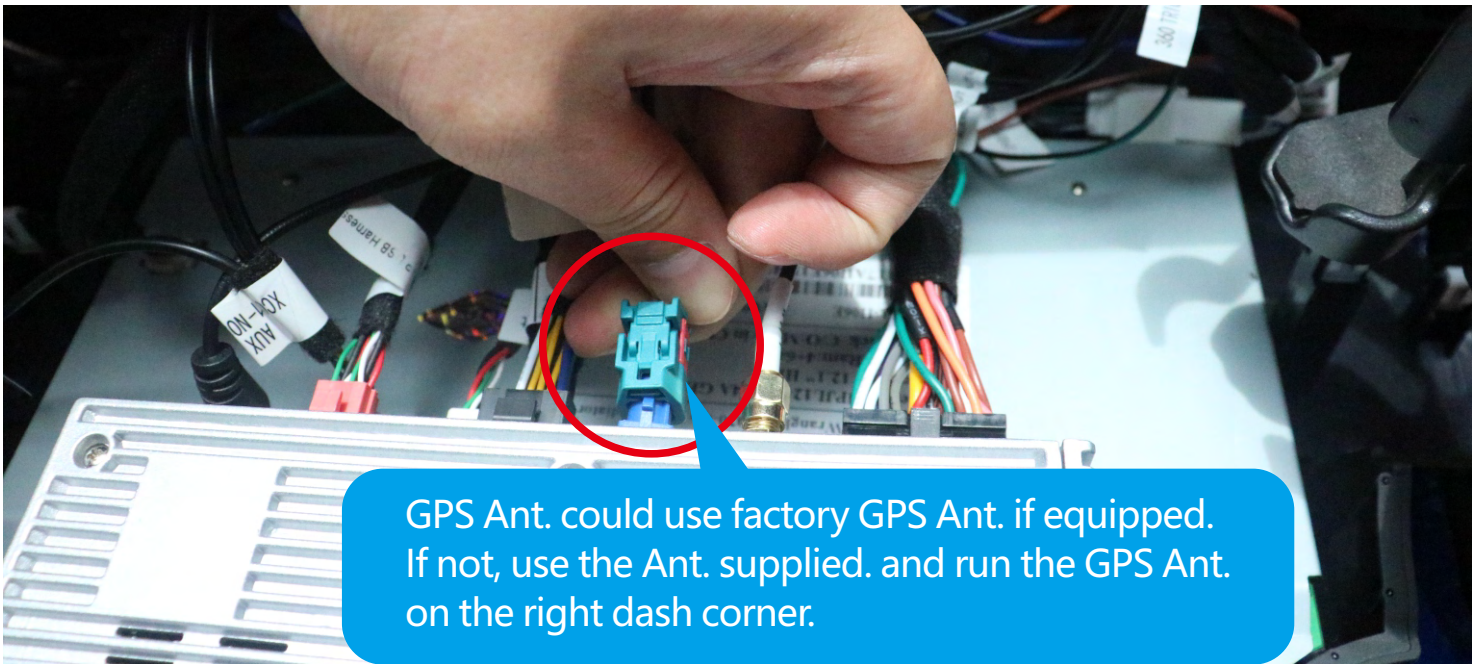
Install the factory Engine Start-Stop Button.



Connect 10P control buttons connector



Connect all the plugs to radio.



GPS Ant. could use factory GPS Ant. if equipped. If not, use the Ant. supplied. and run the GPS Ant. on the right dash corner.



Turn on the car to confirm all functions working properly. AC, Reverse Camera, Steering Wheel Controls etc.



# Climate Setup

**PRIOR TO INSTALLATION:** IDENTIFY YOUR CLIMATE CONTROL FROM THE OPTIONS BELOW

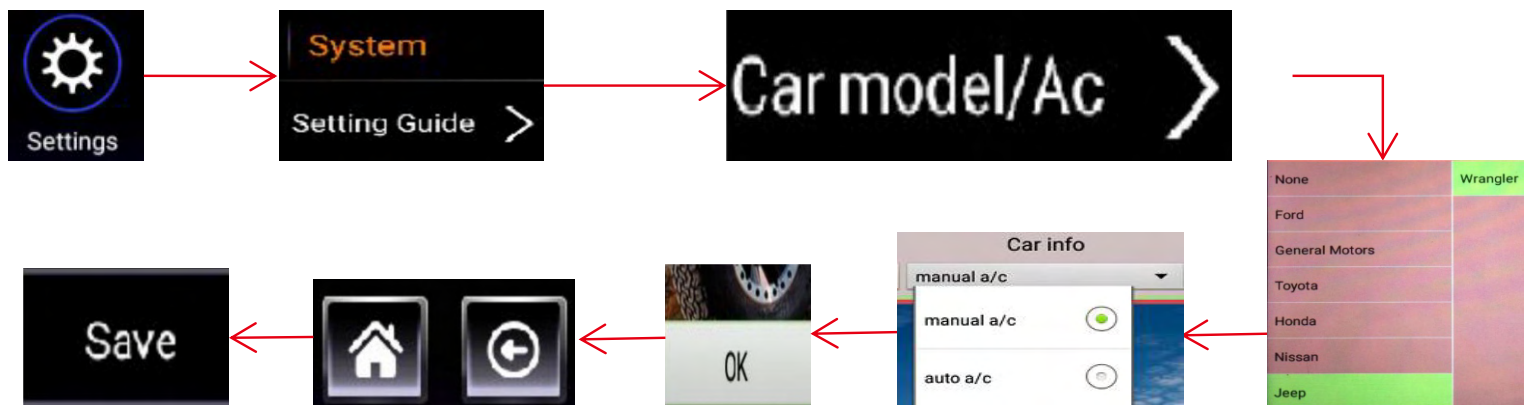
**MANUAL A/C**



**AUTO A/C**



**AFTER INSTALLATION:** SELECT THE PROPER PROGRAM FOR YOUR VEHICLE



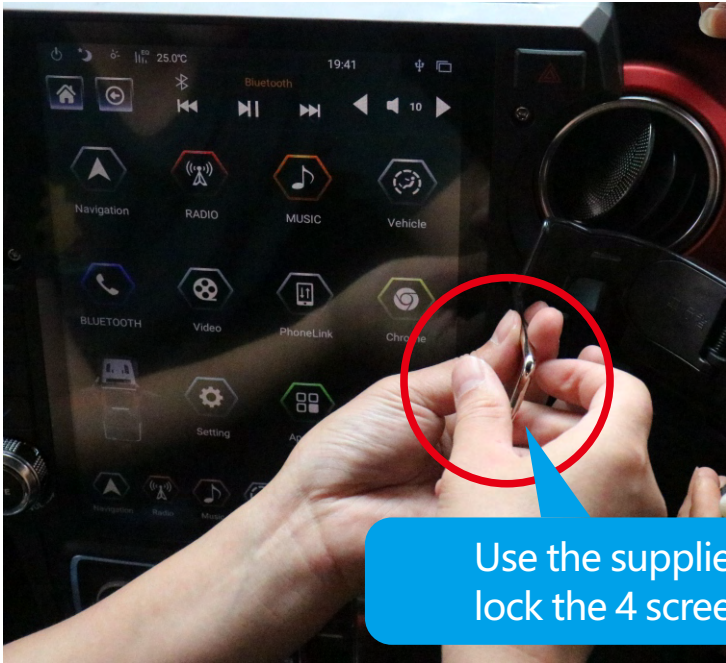
- 1, Tap on Settings
- 2, Tap on System
- 3, Go to Setting Guide
- 4, Tap Car model/AC
- 5, Select your vehicle
- 6, Tap OK on the bottom of the screen
- 7, Tap the Back Button/Left Arrow
- 8, Tap SAVE on the Bottom
- 9, Restart the vehicle and Radio

**Manual Climate Systems:** Manual A/C

**AUTO/DUAL Climate Systems:** Auto A/C



Connect all the plugs to radio.



Use the supplied screw driver to lock the 4 screen screws.





# LINKSWELL

TECHNOLOGY TOGETHER

***909-375-0633***

***www.linkswellinc.com***

***info@linkswellinc.com***

***Linkswell Inc on Facebook, Twitter,  
and Youtube***

