



PO Box 886
Collinsville, OK 74021
Office: (620) 325-9325

INSTALLATION INSTRUCTIONS

BIGBOY BRACKETS

2018 – Current, JL/JT Four Door Models
2018 – Current, JL/JT Two Door Models
PASSENGER'S SIDE (US)
JBBJL350P

Liability Release

The purchaser of this product agrees that the manufacturer of this product has no responsibility or liability for errors in installation and/or resulting injury and/or accidents resulting from or associated with use and/or installation of this product.

Purchaser agrees to release manufacturer from any and all liability for personal injuries including death and property losses or damage occasioned by, or in connection with any activity or accommodations for use and/or installation of this product, either professionally installed or self-installed.

Purchaser furthermore agrees to hold harmless and indemnify said manufacturer organization(s) its directors, employees and agents, for any liability sustained by use and/or modifications of product or vehicle, including claims for damages, losses, injuries, and expenses arising out of or resulting from use of product.

WARNING

**FOR YOUR SAFETY
YOU MUST FOLLOW
THESE
INSTRUCTIONS**

- To avoid serious or fatal injury on vehicles equipped with airbags, disable the Supplemental Restraint System (SRS) before attempting any steering wheel, steering column, airbag, seat belt tensioner, impact sensor, or instrument panel component diagnosis or service.
Disconnect and isolate the negative battery cable. If equipped with an Intelligent Battery Sensor (IBS), disconnect the IBS connector first before disconnecting the negative battery cable.
- Position the seat in the full forward position, and then remove the rear seat bolts (A) and save for later.
- Move the seat to the full rearward position, and then remove the front seat bolts (A) and save for later.
- Tilt the seat up and disconnect the wire harness connectors, then remove the seat.
- Install the BigBoy seat brackets using the four bolts saved during removal (A). For ease of installation, be sure to slide all 3/8" x 1" carriage bolts (E) and especially 5/16" x 1" black carriage bolt (B) into their positions under the bracket as shown in Figure 1.

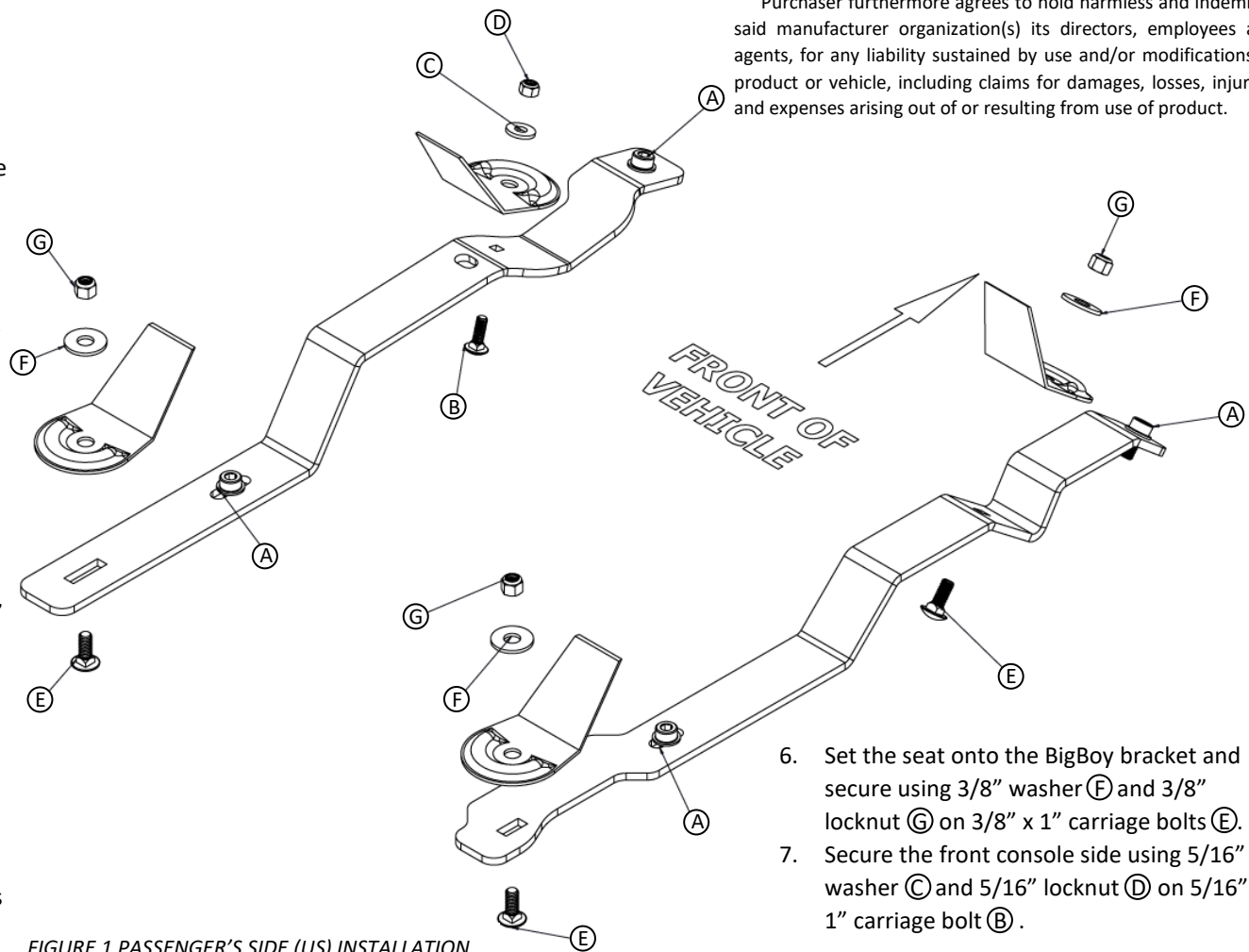


FIGURE 1 PASSENGER'S SIDE (US) INSTALLATION

- Set the seat onto the BigBoy bracket and secure using 3/8" washer (F) and 3/8" locknut (G) on 3/8" x 1" carriage bolts (E).
- Secure the front console side using 5/16" washer (C) and 5/16" locknut (D) on 5/16" x 1" carriage bolt (B).