



Skyline Jeep Wrangler/Gladiator 2018-2020 Headlights INS 19048

Tools Needed

> **Small Flathead Screwdriver** >< **10mm Socket and Ratchet** >< **Wire Cutters**

1. Disconnect your battery cable before installation.
2. Remove the top 6 push pins that hold down the grill with a flat head screwdriver. **Fig A**
3. Pull the grill off the vehicle and away from the retaining clips. Start from both end then center.
Fig B
4. Unscrew the three 6mm bolts that hold the headlight to the front chassis. **Fig C**
5. Disconnect the headlight from the vehicle harness. **Fig D**
6. Connect the Day Time Running Light wire harness by splicing into the fender flare marker light or connect a mini fuse tap into fuse No. F52. This will turn on your DRL when the vehicle is turned on. Feed the blue wire over to the driver side and plug it to the headlight. Secure harness with the tie wraps. **Fig E and F**
7. Unscrew the inner fender flare 6mm bolt and remove the push pin from the vehicle to peel back the inner fender to view the turn signal light. **Fig G**
8. Connect the second headlight turn signal wire by splicing into the green and white turn signal harness. **Fig H**
9. Plug in both Overtread headlight into the stock harness. Mount both lights with existing hardware.
10. Reinstall the grill by snapping it back onto the vehicle and reinserting the push pins on top of the grill.



Fig A



Fig B



Fig C



Fig D

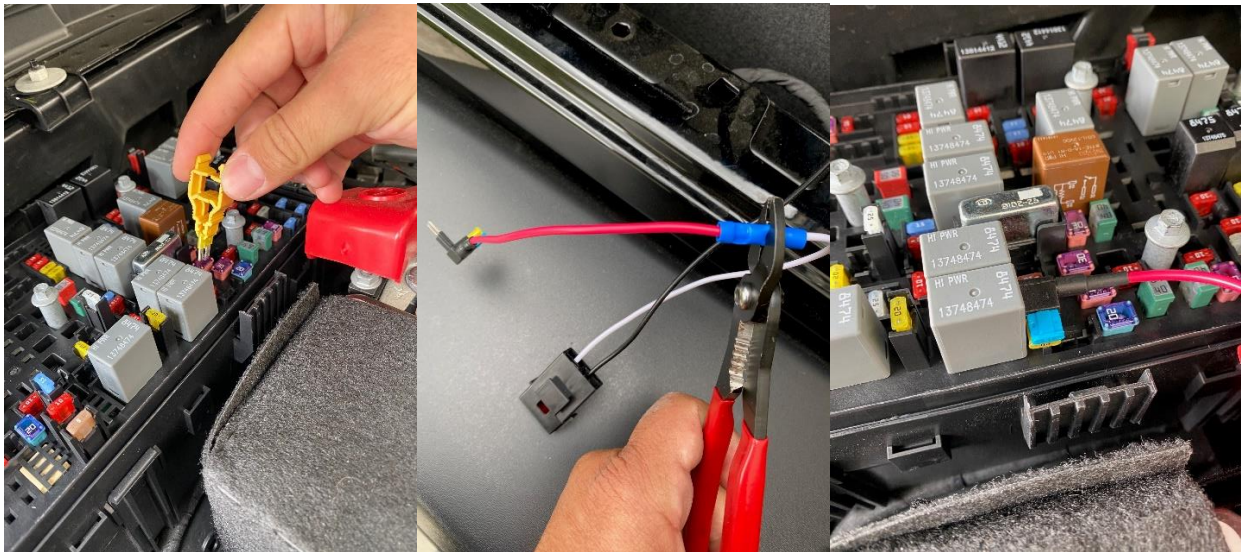


Fig E

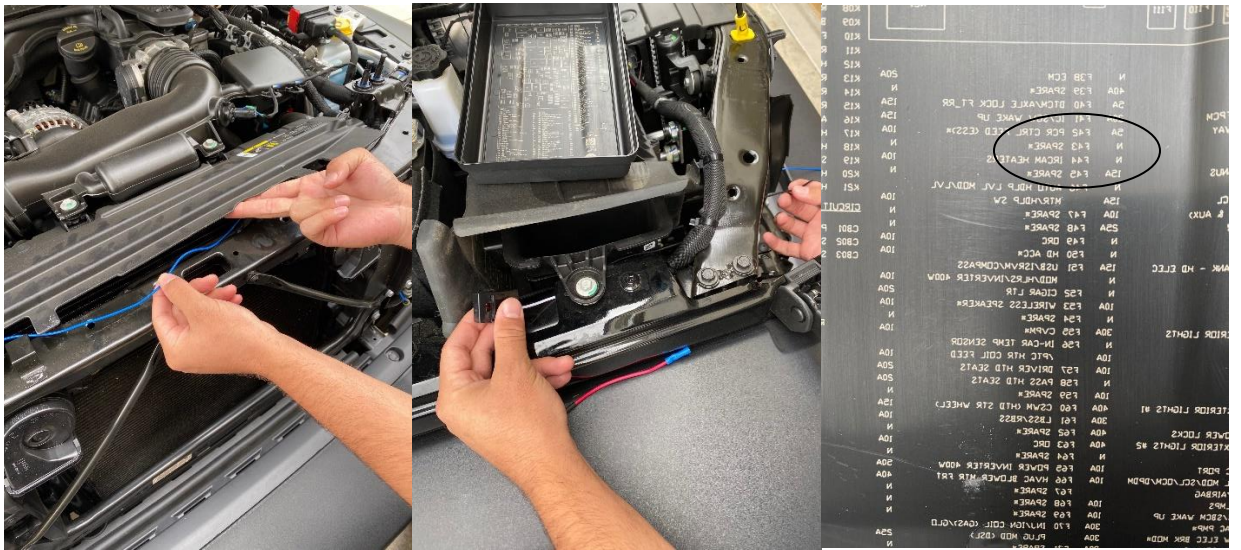


Fig F

F52 Cigar LTR



OVERTREAD



Fig G

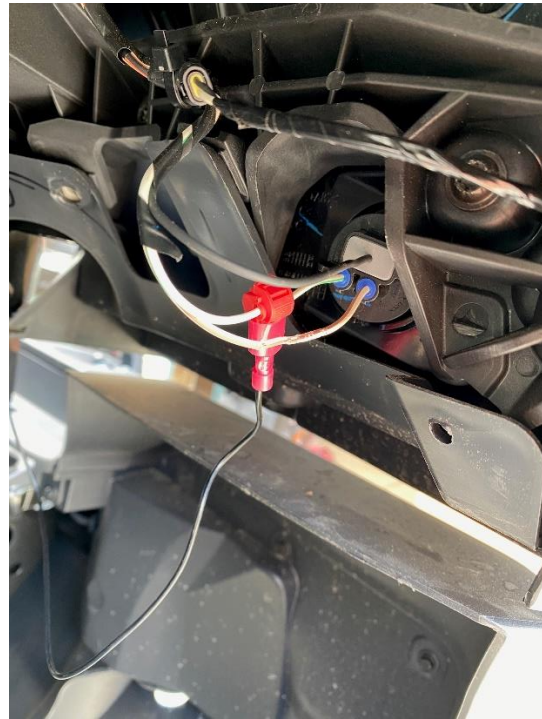


Fig H



Fig H



Fig I