

Installation Instructions

FITS:
18-20 Jeep Wrangler JL
20 Jeep Gladiator JT

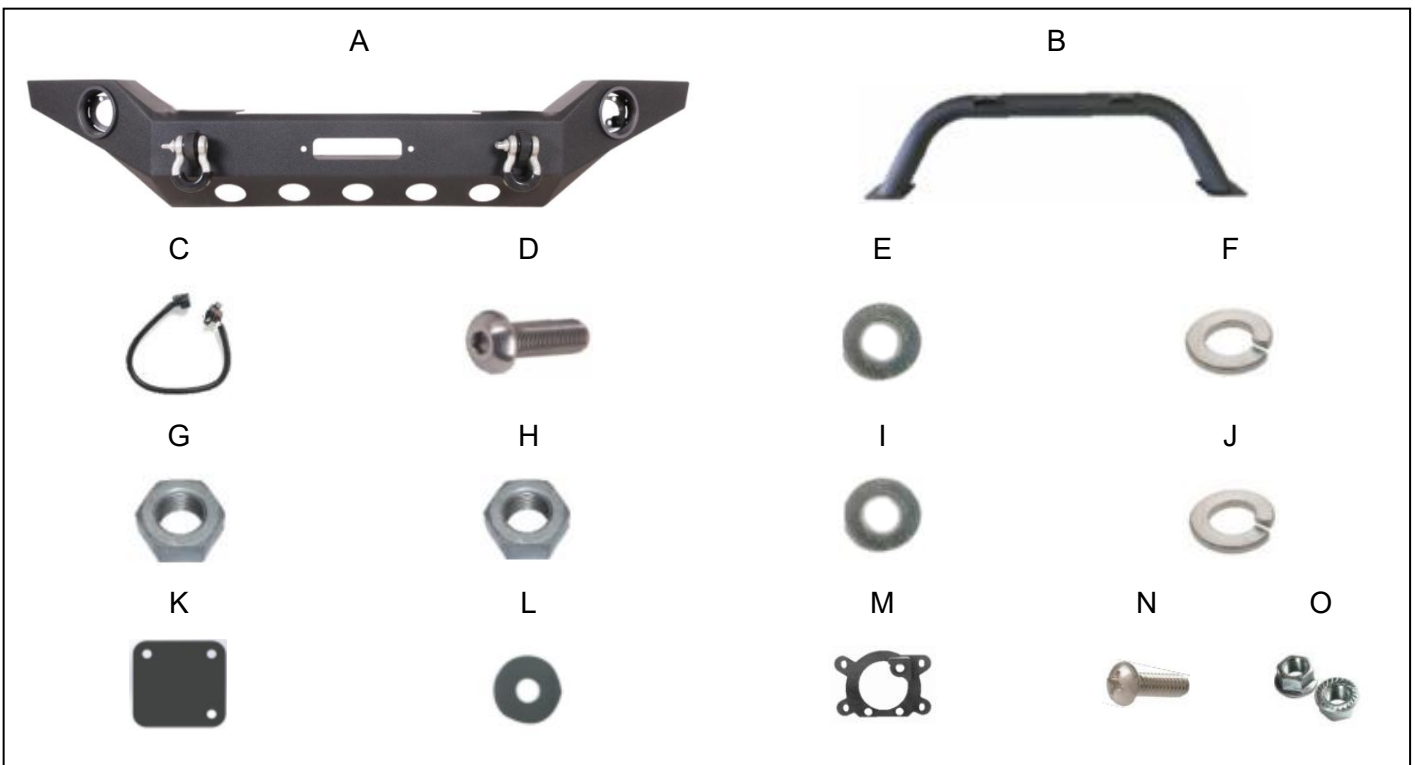
Front Bumper

TOOLS NEEDED

13mm Wrench	5/8mm Wrench	Fastener Pry Tool
18mm Deep Socket	#2 Phillips Head Screw	Ratchet

COMPONENTS & HARDWARE

#	QTY		#	QTY	
A	1	Front Bumper	B	1	Front Hoop
C	2	Fog Light Extension	D	6	M8x25mm Allen Head Bolts
E	6	M8 Flat Washer	F	6	M8 Split Washer
G	6	M8 Hex Head Nuts	H	8	M12 Hex Head Nuts
I	8	M12 Flat Washer	J	8	M12 Split Washer
K	2	Protection Pads	L	6	M8 Nylon Flat Washer
M	2	Fog Light Adaptor Bracket	N	8	M4x16mm Phillips Head Bolt
O	8	M4 Phillips Head Nuts			



Please take a few minutes to read and thoroughly familiarize yourself with the installation procedures outlined in this manual. Following the steps as outlined will save you time and help reduce mistakes. Once the instructions are reviewed, if you feel that you are not capable of safely installing the parts seek the help of a qualified installation expert to help you complete the job. The manufacture is in no way responsible for any personal injury or vehicle damage that may occur during the installation.

California Proposition 65 Warning!

This product may contain one or more chemicals known to the State of California to cause cancer and birth defects or other reproductive harm. For more information go to www.P65Warnings.ca.gov.

Removing Factory Bumper



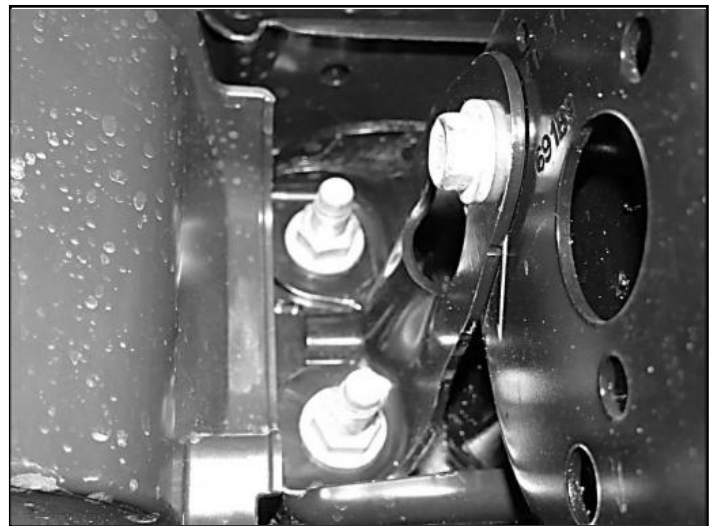
Step 1.
Using a plastic clip removal tool or similar tool locate and remove two factory clips shown above. Discard factory clips.



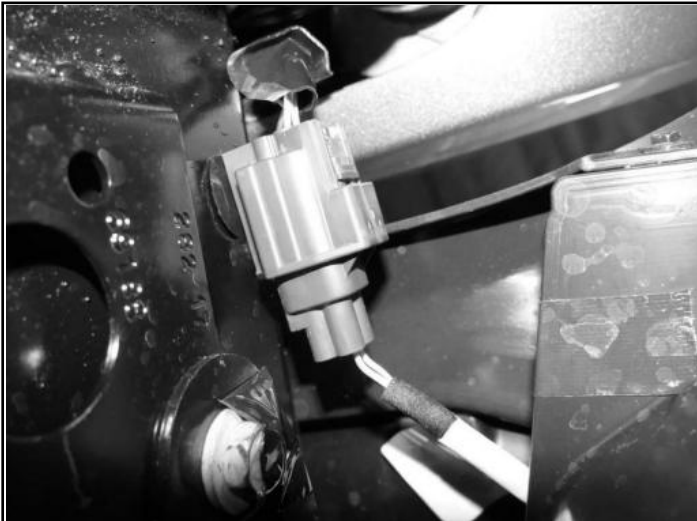
Step 2.
Working under the Jeep locate and 8 plastic fasteners along the bottom front edge. Use a fastener pry tool to remove them. Set fasteners aside in a protected area.



Step 3.
Using a 8mm socket locate and remove 2 factory bolts holding the factory skid plate onto the bumper. Remove factory skid plate from vehicle. Discard factory hardware and skid plate.



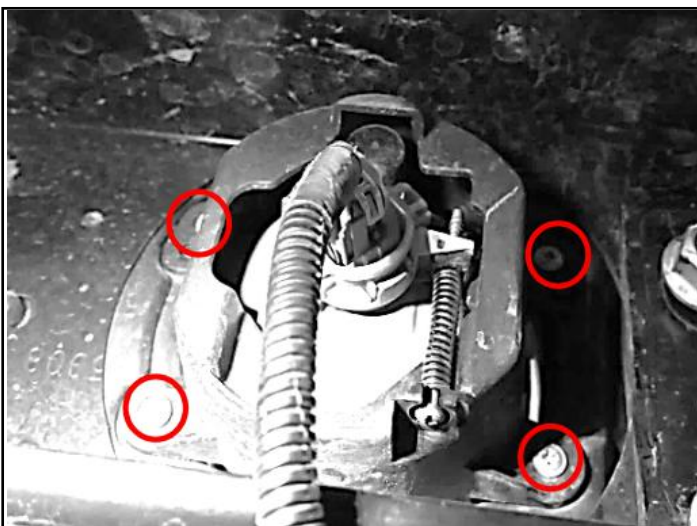
Step 4.
Using an 18mm deep socket, remove the 4 factory mounting nuts (2 on each side of the frame) located next to the outside of your JL's frame rails. Discard factory hardware. Repeat process for the other side of the Jeep.



Step 5.
Locate and disconnect factory fog light harness.



Step 6.
With help from an assistant firmly pull the front bumper off the frame rails and set it aside in a protected area.

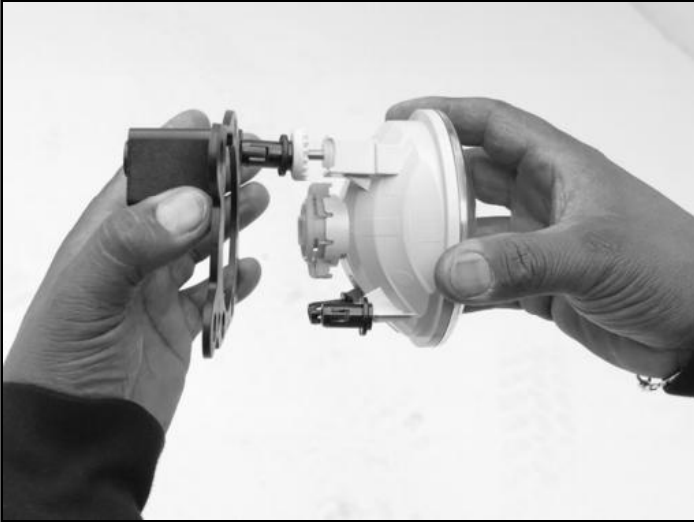


Step 7.
Fog light removal.
Working on work bench locate the wiring harness plug, lift up the locking clip and unplug the harness. Repeat process for other side. Using a #2 Philips head screw driver locate and remove 4 Philips head bolts holding factory fog light onto bumper. Remove fog light from bumper. Set fog light aside for later use. Discard hardware.

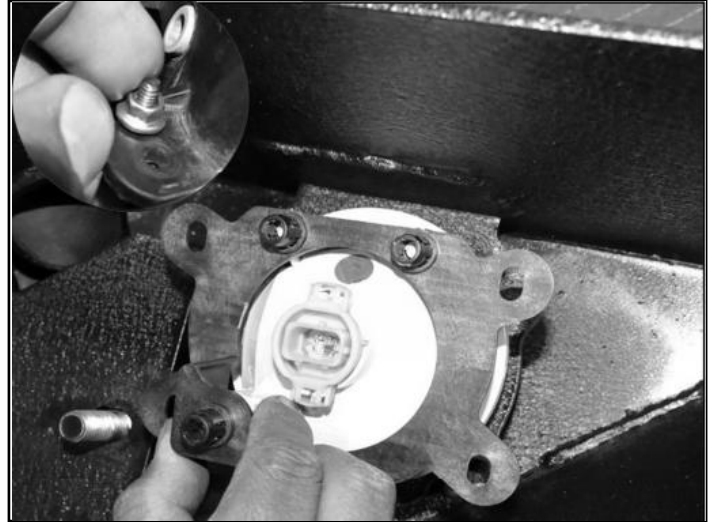


Step 8.
Using a fastener pry tool remove the wiring harness connector attached to the back of the bumper.

Installing Factory Fog Lights 18-20 Jeep JL



Step 1.
Place factory fog light into the supplied fog light adaptor bracket as shown.



Step 2.
Place supplied Philips head screw M4x16mm through the bumper holes and through the holes in the fog light adaptor bracket. Start a supplied flange nut at the end of the bolt. Tighten down using a 7mm socket. Repeat step for remaining bolts. Reconnect factory fog light. Repeat steps 1-2 for other side.

Installing Front Bumper



Step 1. Working on work bench.
Install supplied bumper hoop onto bumper as shown. Put protection pads between hoop and bumper. Line up the holes in the hoop with the holes in the bumper.



Step 2.
Place supplied allen head bolt M8x1.25x25mm through the holes in the bumper cross bar and through the bumper holes. Start a supplied hex head nut M8 with supplied M8 split washer and flat washer and nylon washer at the end of the bolt. Tighten down using a 13mm socket. Repeat step for remaining bolts. Repeat step for other side.



Step 3.
Install supplied bumper onto vehicle as shown. Line up bumper holes with OE frame holes. Note: You will need help from an assistant to hold bumper in place while the nuts are installed.

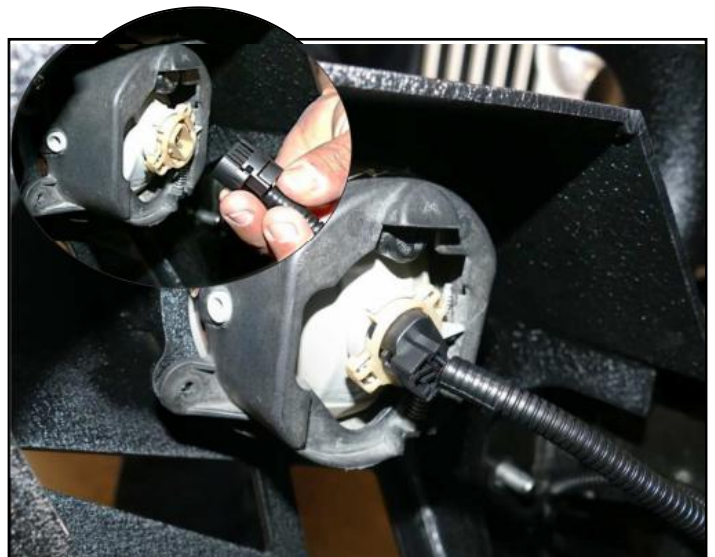


Step 4.
Place supplied M12 flat washer and M12 split washer onto bolt. Start a supplied M12x1.75 hex head nut onto bolt. Repeat step for remaining bolts.

Installing Factory Fog Lights Extension



Step 1.
Connect factory fog light plug onto supplied fog light extension. Repeat step for other side of vehicle.



Step 2.
Connect fog light extension onto factory fog light. Repeat step for other side of vehicle.

This completes the installation.