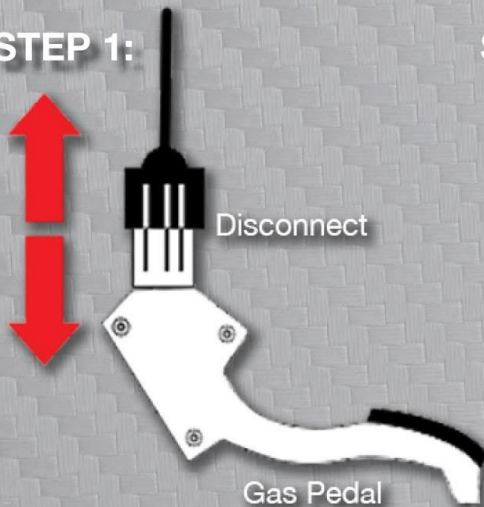


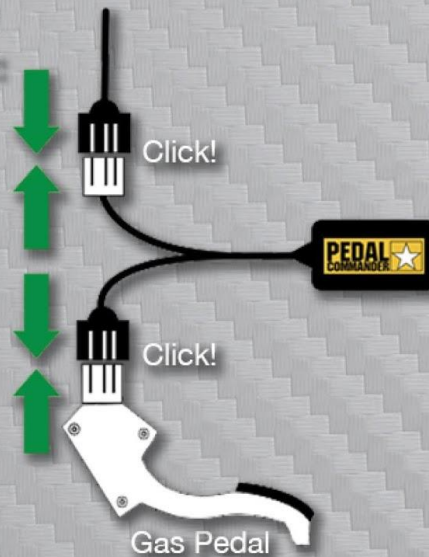
Pedal Commander Easy Installation

Skill Level: Basic • Time: 5-10 Minutes

STEP 1:



STEP 2:



1. Turn *off* ignition.
2. If your vehicle has a key fob, keep it at least 30 feet away from the vehicle (*the fob can power up certian systems resulting in a check engine light*).
3. Locate your gas pedal assembly plug connector usually on the pedal assembly.
4. Remove the wiring harness plug on your gas pedal.
5. Plug male and female connectors into their coordinatino plugs on the gas pedal & pedal harness.
6. Make sure the harness cables are tucked in place to aviod contact while driving.
7. Route the Pedal Commander to where you can access it easily.
8. Use the included alcohol wipe to clean the area where you would like to mount the bracket.
9. Apply velcro to the bracket and the cleaned area.
10. Place Pedal Commander into the braket and you're done!