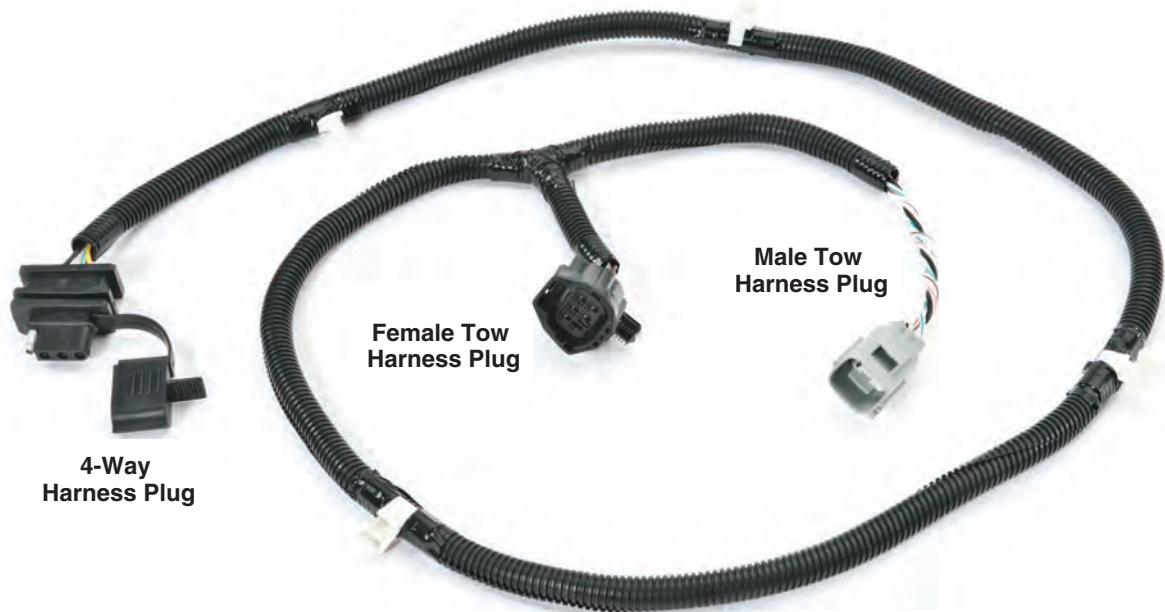


4-Way Trailer Tow Harness for Jeep Wrangler 2007-2013 (JK)

Installation and Instruction Manual
#92015.8001



⚠ WARNING ⚠

READ ALL SAFETY MESSAGES AND UNDERSTAND ALL INSTRUCTIONS AND PROCEDURE *NOTICES* BEFORE ATTEMPTING TO INSTALL OR USE THIS PRODUCT.

⚠ WARNING ⚠

VEHICLE BATTERY MUST BE DISCONNECTED DURING WIRING HARNESS INSTALLATION.

FAILURE TO DISCONNECT BATTERY COULD RESULT IN ELECTRICAL SHOCK TO THE PERSON PERFORMING INSTALLATION.

FAILURE TO DISCONNECT BATTERY COULD RESULT IN DAMAGE TO VEHICLE ELECTRICAL SYSTEM.

REQUIRED TOOLS:

PHILLIPS HEAD SCREW DRIVER (P8)
10mm WRENCH (TO DISCONNECT BATTERY)

PARTS LIST:

WIRING HARNESS (1)



The Trusted Source

Step One:

*Make sure that your vehicle is in gear or park and emergency brake is set.
Disconnect the negative battery terminal using a 10mm wrench.*



Step Two:

Remove the driver side tail lamp by removing the two fasteners pointed out using the Phillips head screwdriver.

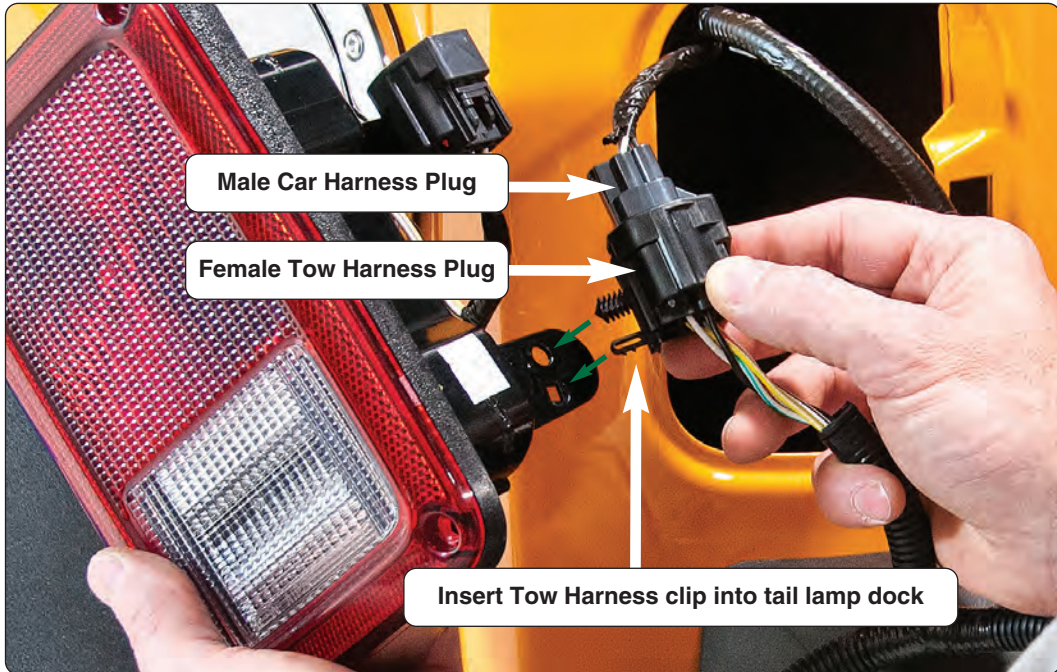


Step Three:

Carefully disconnect the tail lamp plug to the car harness by depressing the locking tab on the female plug end to release the plug connection.



The Trusted Source



Step Four:

Connect the male car harness plug end into the female tow harness plug end. Be sure that the plug is fully engaged with the locking tab. Insert the plug clips on the tow harness to the tail lamp clip dock.



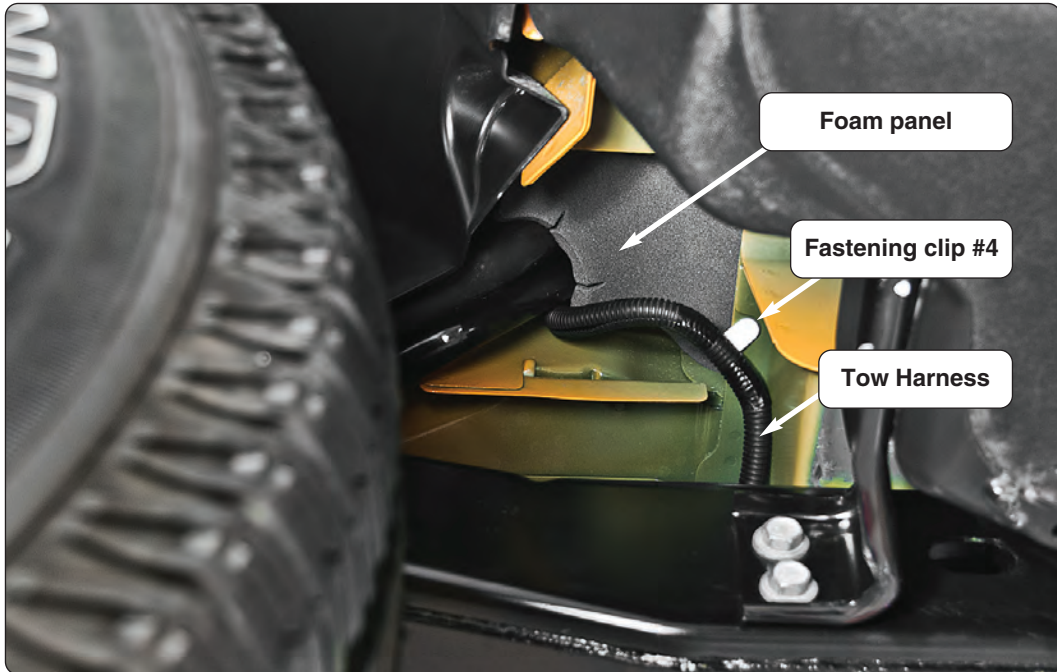
Electrical connections complete

Step Five:

Connect the male tow harness plug end to the vehicle's female tail lamp plug. Be sure that plug is fully engaged with the locking tab.



The Trusted Source

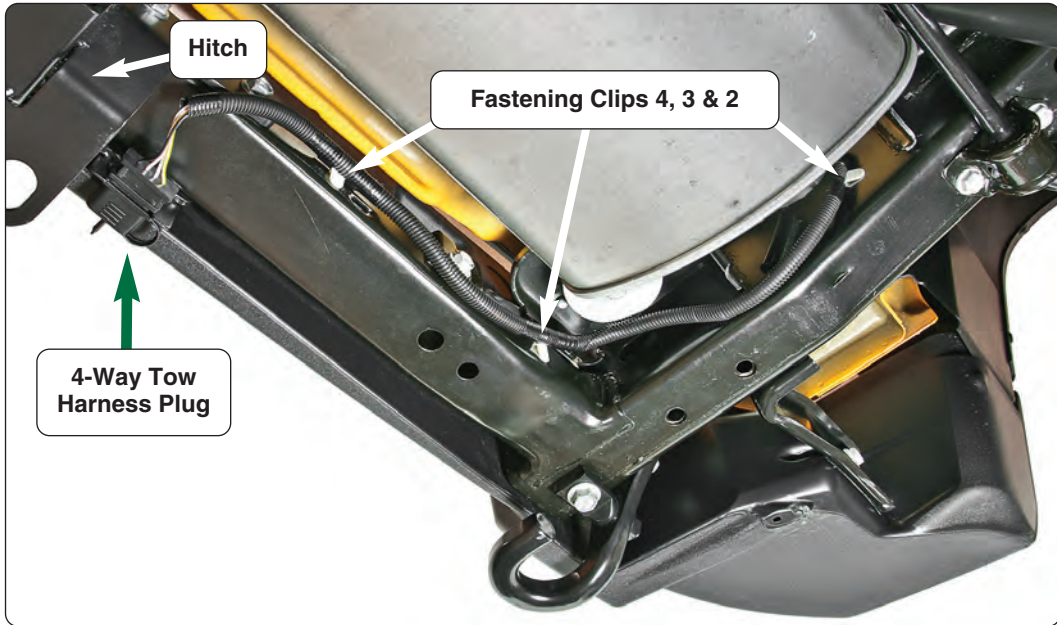


Step Six:

Take the 4-way tow harness plug end and feed it through the tail light opening and down inside the car body to the notched corner of the foam panel located at the back of the wheel well. Continue to pull the tow harness cord through the notch until the fourth fastening clip passes through. Feed the harness over the top of the vehicle frame and towards the receiver hitch. Push the last clip (the one closest to the tail lamp) into the existing hole on the body at the location shown.

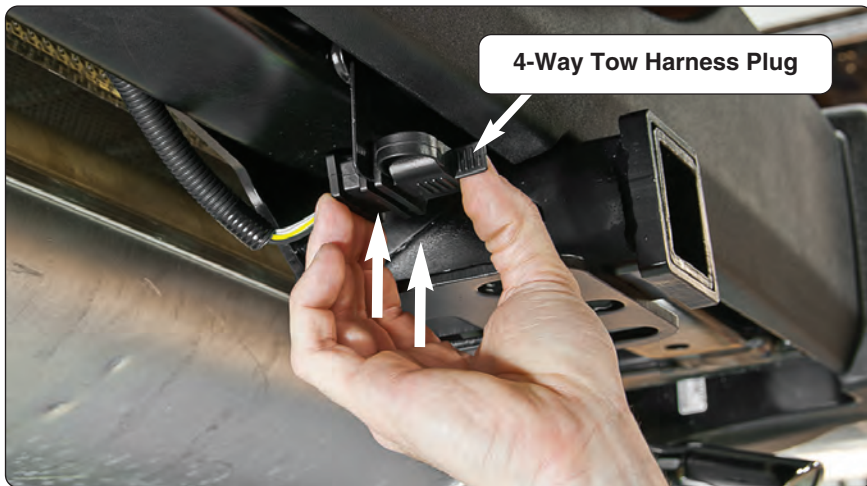


The Trusted Source



Step Seven:

Press the 3 remaining tow harness clips into the “existing” factory holes on the inside frame rail and rear cross member as illustrated. Make sure that the tow harness is at least several inches away from any exhaust components.



Step Eight:

Press the 4-way harness plug up and into the plug clip located on the left side of the receiver hitch (if applicable).



The Trusted Source



Step Nine (Final):

Reinstall the two tail lamp fasteners that were removed earlier and reconnect the negative battery terminal.

⚠ WARNING ⚠

Immediately check vehicle tail lamps and trailer lamps to ensure that both turn signals, brake, flasher, driving and backup lamps are all functioning properly. If not, double check your work or seek a professional automotive technician since a problem may exist within the “trailer” wiring.

If you have a question specific to your purchase, our customer service staff is standing by. Call toll free: (800) 745-6037 or visit our #1 rated website at www.quadrtec.com



The Trusted Source

Q SERIES WINCHES

**MORE WINCH
LESS MONEY!**



NEW! Q-Series Self Recovery Winches

The first winches designed and engineered specifically for your Jeep®. The Q9000 provides all of the capability that most enthusiasts will ever need. The Q11000 provides even more capability for heavier Jeeps like the 4 door Wrangler Unlimited. Now you get the lowest price of any winch in this class. Our engineers work directly with the factory to provide features specifically tailored to your Jeep. Our powerful 4.8 HP series wound motor and class leading low gear ratios give fast line speeds with a Battery Friendly low current draw. You'll get the most winching time from your available battery charge. Our Winches include two sets of solenoid brackets for side mounting or top mounting. Enjoy an industry best Limited Lifetime Warranty on mechanical parts and a 1 year Warranty on all electrical components. Detailed installation instructions and a handy glove compartment sized Owners Manual with Winching Guide are included.



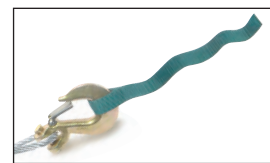
Q11000 Shown in BLACK Finish with Solenoid in the side mount position.

2 SOLENOID POSITIONS!

Q9000 Shown with Solenoid in Top mount position.



All versions come with a Hi-Viz Rubberized Remote with 12' Cord



Forged Steel Clevis Hook and Custom "Quadratec Green" Nylon Safety Strap

- Q9000 Self Recovery Winch Grey #92122.2000**
- Q9000 Self Recovery Winch Black #92122.2010**
- Q11000 Self Recovery Winch Grey #92122.2001**
- Q11000 Self Recovery Winch Black #92122.2011**
- Winch Mount Plate for '07-'13 Wrangler #12065.1010**

**STARTING AT
\$294.99!**

Go online or call for latest price...



The Trusted Source

Quadratec® Exclusive Three Year Limited Warranty

Your Quadratec® branded accessories are covered by the following **Limited Warranty** provided exclusively by Quadratec, Inc., 1028 Saunders Lane, West Chester PA 19380.

This **Limited Warranty** is the only warranty made in connection with your purchase. Quadratec neither assumes nor authorizes any vendor, retailer or other person or entity to assume for it any other obligation or liability in connection with this product or **Limited Warranty**. This **Limited Warranty** does not apply and is not cumulative to any accessory or part distributed by Quadratec for which the Manufacturer provides a separate written warranty.

What is Covered: Subject to the terms, exclusions and limitations herein and with respect only to Quadratec branded accessories first sold in the United States, Quadratec warrants to the initial retail purchaser only that your Quadratec accessory shall be free of defects in material and workmanship: **for a period of three (3) years from date of retail purchase.**

This **Limited Warranty** is not assignable and shall terminate upon sale of the vehicle upon which the Quadratec accessory is installed or other transfer third persons.

All other warranties are hereby disclaimed, except to the extent prohibited by applicable law in which case any implied warranty of merchantability or fitness for a particular purpose on this product is limited to 3 year from date of initial retail sale. Quadratec reserves the rights to: (a.) require invoice or other proof your accessory is within the terms of this **Limited Warranty** as a condition of warranty service and, (b.) make future revisions to this product and **Limited Warranty** without prior notice or obligation to upgrade your product.

What is Not Covered:
Your Quadratec **Limited Warranty** does not cover products or parts Quadratec determines to have been damaged by or subjected to:

(a.) installation damage, alteration, modification, combination with other parts, failure to maintain or improper repair or service, (b.) normal wear & tear, cosmetic damage or damage from moisture or water immersion, (c.) Acts of God, accidents, misuse, negligence, inadequate mounting or impact with vehicle(s), obstacles or other aspects of the environment, (d.) theft, vandalism or other intentional damage.

Remedy Limited to Repair/Replacement:
The exclusive remedy provided hereunder shall, upon Quadratec inspection and at Quadratec's option, be either repair or replacement of product or parts (new or refurbished) covered under this **Limited Warranty**. Customers requesting warranty consideration should first contact Quadratec to obtain a RGA number (610-701-3336). All labor, removal, shipping and installation costs are customer's responsibility.

Other Limitations - Exclusion of Damages - Your Rights Under State Law:

In consideration of the purchase price paid, neither Quadratec nor any independent Quadratec distributor/licensee are responsible for any time loss, rental costs, or for any incidental, consequential, punitive or other damages you may have or incur in connection with any part or product purchased. Your exclusive remedy hereunder for covered parts is repair/replacement as described above.

This **Limited Warranty** gives you specific rights. You may also have other rights that vary from state to state. For example, some states do not allow limitations of how long an implied warranty lasts and /or do not allow the exclusion or limitation of incidental or consequential damages, so the limitations and exclusions herein may not apply to you.

©Quadratec, Inc. 2013. All Rights Reserved.
Version 5.23.13

Part #12999.3006



The Trusted Source