



CFE PRODUCTS

MODEL # JK-PMM1118

Jeep JK Wrangler Magnetic Grab Handle Phone Mount
2011 to 2018 JK

REV 2025 Mag Safe



WARNING:

This product can expose you to chemicals including vinyl chloride and lead, which is known to the state of California to cause cancer and birth defects or other reproductive harm. For more information go to www.P65Warnings.ca.gov

New & Improved , Now with **MAG SAFE MOUNT!**



1. Using a pry stick or small flat edge screw driver, carefully pry out the plastic trim insert of the passenger side dash handle.

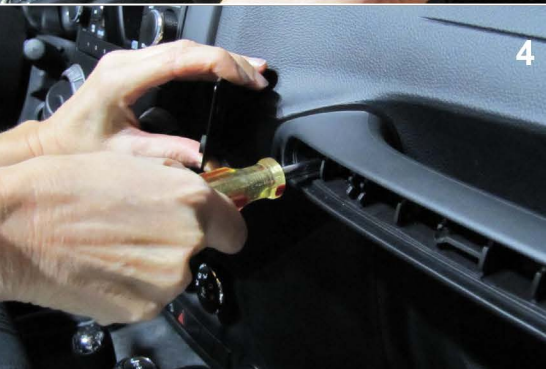


2. Using a 8mm socket, remove the two 8 mm screws that hold the handle to the dash.



3. Slide the mounting brackets over the handle posts as shown in picture #3.

The larger mounting bracket goes to the left side and the smaller spacer piece goes on the right side



4. Align the brackets and re-install the dash handle as shown in picture #4.

5. Install the round metal ring either between your phone & phone case, or on the outside of the phone case [outside the case for strongest hold]



Questions or Comments ?

call CFE PRODUCTS

610 358 1886 / ASK FOR BOB