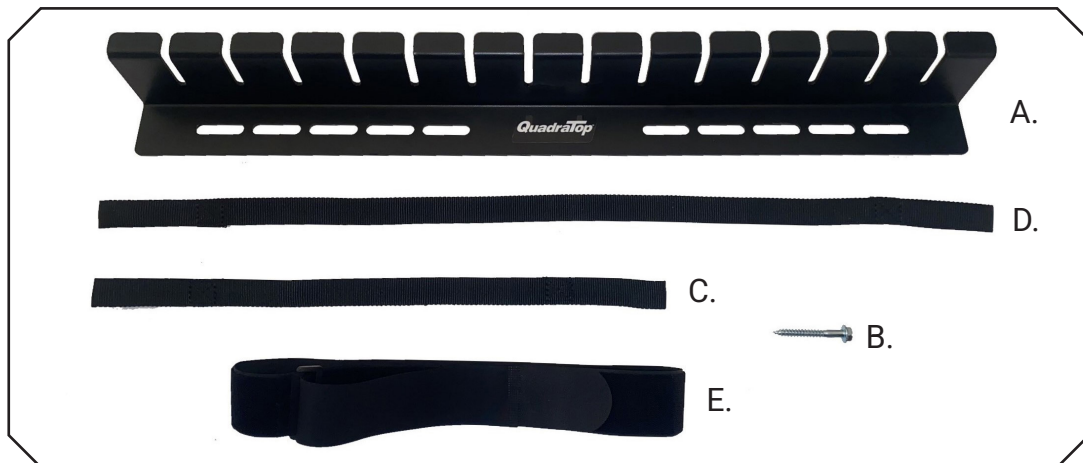


QuadraTop® Wall Mount Soft Top Storage Hanger System

Installation Manual: For CJ, Wrangler & Gladiator #12020-5200



Note: Optional Rear Window Storage Bag (91109-5324) is not included in kit.



KIT CONTENTS:

- A. Wall Hanger Hook Base (x2)
- B. 5/16" x 2.5" Lag Screw (x4)
- C. 20" Short Double Loop Strap (x6)
- D. 32" Long Double Loop Strap (x2)
- E. Hook & Loop Strap 48" (x2)

REQUIRED TOOLS LIST:

- Safety Glasses
- Tape measure
- Ruler
- Pencil
- Stud Finder
- Large Bubble level
- Large Finish Nail
- Multifunction Wall Scanner or Stud Finder
- Carpentry Hammer
- Painter's Tape
- Drill
- 9/64" Drill Bit
- 1/2" Socket
- Ratchet
- Non-Contact Voltage Tester

A FEW WORDS ABOUT PRODUCT SAFETY:

Your QuadraTop Premium Wall Mount Soft Top Hanger System is intended to enhance the versatility and enjoyment of your vehicle and to help preserve your investment. Before assembly and use, please review the following safety and assembly information. Throughout these instructions important safety information is generally preceded by one of the three signal words indicating the relative risk of injury, property damage or adverse consequence.

The signal words mean:

⚠ WARNING ⚠

A HAZARDOUS SITUATION WHICH, IF NOT AVOIDED, COULD RESULT IN DEATH OR SERIOUS INJURY. YOU CAN BE KILLED OR SERIOUSLY HURT IF YOU DON'T FOLLOW

⚠ CAUTION ⚠

A HAZARDOUS SITUATION WHICH, IF NOT AVOIDED, COULD RESULT IN A MINOR OR MODERATE INJURY. YOU CAN BE MODERATELY HURT AND ALSO MAY SUFFER PROPERTY DAMAGE IF YOU DON'T FOLLOW INSTRUCTIONS.

NOTICE

CAREFUL ATTENTION IS REQUIRED TO THIS INSTRUCTION OR OPERATION BUT DOES GENERALLY NOT RELATE TO PERSONAL INJURY. DAMAGE TO YOUR QUADRATOP® PRODUCT OR OTHER PROPERTY MAY RESULT IF YOU DON'T FOLLOW INSTRUCTIONS.

BEFORE YOU BEGIN INSTALLATION:

Congratulations on your purchase of QuadraTop® Premium Wall Mount Soft Top Hanger System for your Jeep® CJ, Wrangler or Gladiator.

This custom Hanger has been designed for protection, long life, and great looks. When unpacking, check to make sure all parts are included and not damaged due to shipping. If any part is missing or broken, please call Customer Service at: 800-745-6037 as soon

⚠ WARNING ⚠

TO REDUCE RISK OF SERIOUS INJURY FROM FALL HAZARD, ALWAYS USE TWO OR MORE PEOPLE FOR INSTALLATION. NEVER ATTEMPT INSTALLATION WITHOUT ASSISTANCE.

⚠ CAUTION ⚠

READ ALL SAFETY MESSAGES AND ALWAYS WEAR SAFETY GLASSES WHEN WORKING WITH TOOLS.

⚠ CAUTION ⚠

COMPONENTS MAY HAVE SHARP EDGES, EXTREME CARE NEEDS TO BE TAKEN TO AVOID INJURY OR DAMAGE TO DOOR COMPONENTS AND PAINT DURING USE AND INSTALLATION OF THIS PRODUCT.

STEP 1 - WALL SPACE AND CONSTRUCTION REQUIREMENTS FOR THE DOOR HANGER BRACKET

The QuadraTop Premium Wall Mount Soft Top Storage Hanger System must be lag bolted to four (4) wooden wall studs. This kit only supplies the necessary fasteners and instructions to install the Soft Top Storage Hanger System to a typical 1.5" wide (or wider) wooden wall stud. To mount the Wall Mount Soft Top Storage Hanger System to a masonry wall such as brick, stone, concrete or cinder block, consult a licensed building contractor for proper fastening and installation. The wall surface must have ½" thick sheetrock or plywood. Do NOT mount the Soft Top Storage Hanger System to a bare stud. Doing so, will create an unsafe installation and possible failure.

The Soft Top Storage Hanger System requires a Minimum Width of 62 inches of space covering 4 continuous wooden wall studs.

⚠ WARNING ⚠

DO NOT SCREW INTO METAL STUDS. THEY ARE NOT INTENDED TO ACCEPT FASTENERS. CONSULT STUD MANUFACTURER MAKER FOR RECOMMENDATIONS. SCREWING INTO METAL STUDS MAY CONSIDERABLY WEAKEN SYSTEM, CAUSING LOAD TO FALL AND CAUSE AN ACCIDENT.

STEP 2 - WALL SPACE AND HEIGHT CONSTRUCTION REQUIREMENTS FOR THE SOF TOP HANGER BRACKETS

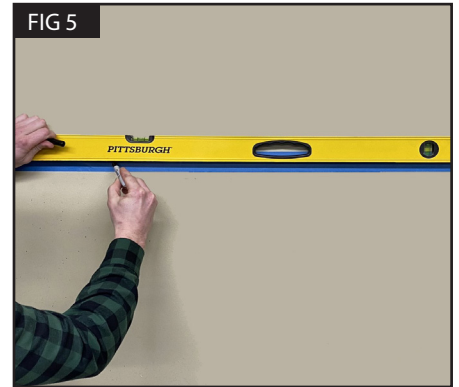
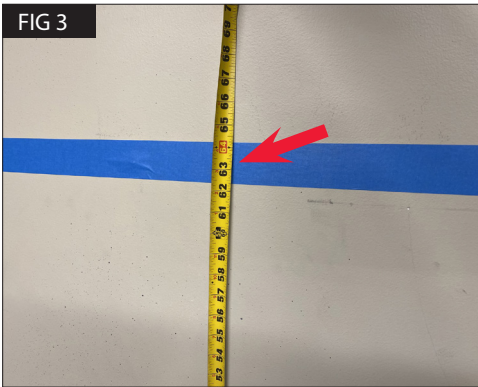


Put on safety glasses. First Determine your minimum mounting height of your Soft Top Storage Hanger brackets by measuring the approximate standing height of your soft top. With your soft top off the vehicle and in the folded position measure from the bottom of the inner metal frame to the top of the fabric section. (FIG 1 & 2) Use this measurement plus 10 inches to ensure proper ground clearance. Height of Folded Soft top + 10 inches = Minimum Mounting Height

⚠️ WARNING ⚠️

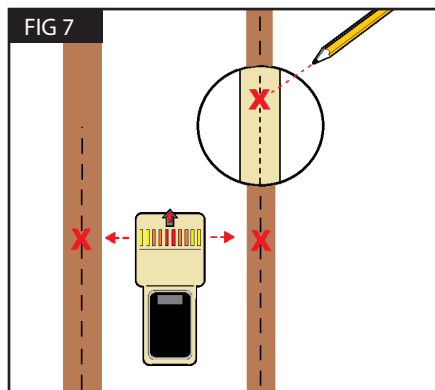
DANGER TO REDUCE THE RISK OF SERIOUS OR FATAL INJURY FROM FIRE, EXPLOSION, OR ELECTROCUTION, TURN OFF ALL GAS, ELECTRICAL AND WATER CONNECTIONS PRIOR TO PERFORMING ANY WORK. USE A CIRCUIT TESTER TO MAKE SURE POWER IS OFF. IF NECESSARY, HAVE THE WORK DONE BY A QUALIFIED SERVICE PROFESSIONAL.

STEP 3 - MOUNTING THE SOFT TOP HANGER BRACKETS TO THE WALL



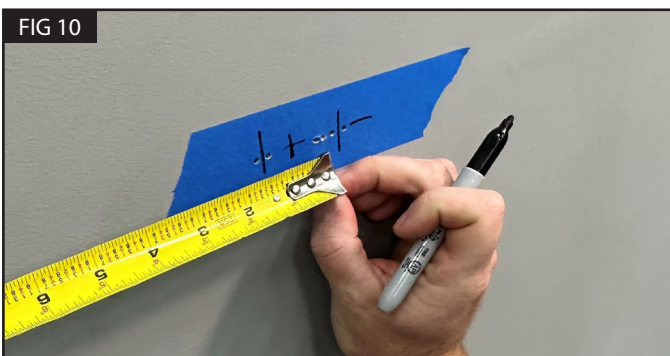
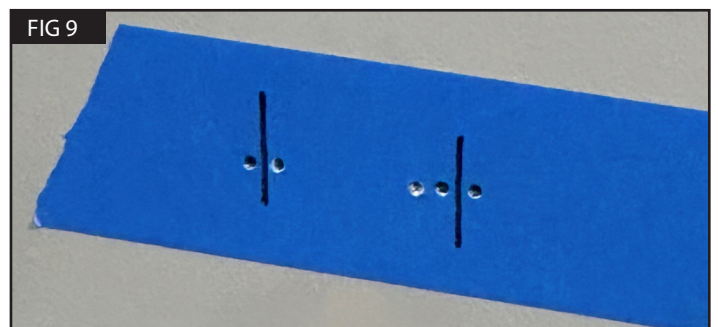
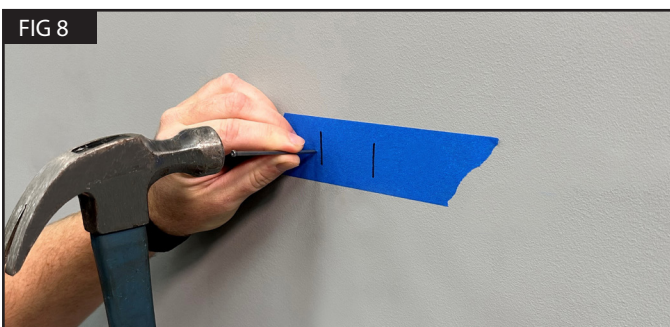
Using a large section of painter's tape, place it horizontally centered at your minimum mounting height spanning atleast 4 wooden wall studs at the required height determined in the previous STEP 2. (FIG 3) Next using a large bubble level, make a long horizontal level line spanning across the large section of painters tape. (FIG 4 & 5)

STEP 4 - MOUNTING THE DOOR HANGER ASSEMBLY TO THE WALL



Using an electronic stud finder, locate the edges of the four (4) wall studs that will accomidate the wall space requirements outlined in STEP 1. find the stud edges using the stud finder and make pencil markings for each of the studs then mark the center of each stud. (FIG 6 & 7)

STEP 5 - ALTERNATE METHOD OF DERTEMING CENER OF STUD



To verify the center point of the stud, use a large finish nail (about 3" long) to locate the exact left and right edges of the wall stud (FIG 8). Drive the nail through the drywall before and after the penciled edge marks of the stud to determine the exact edges of the stud. Mark the center of the stud between nail marks with a bold vertical line that crosses the horizontal height line (FIG 10).

Note: Standard wall studs are 1.5" wide.

STEP 6

FIG 11

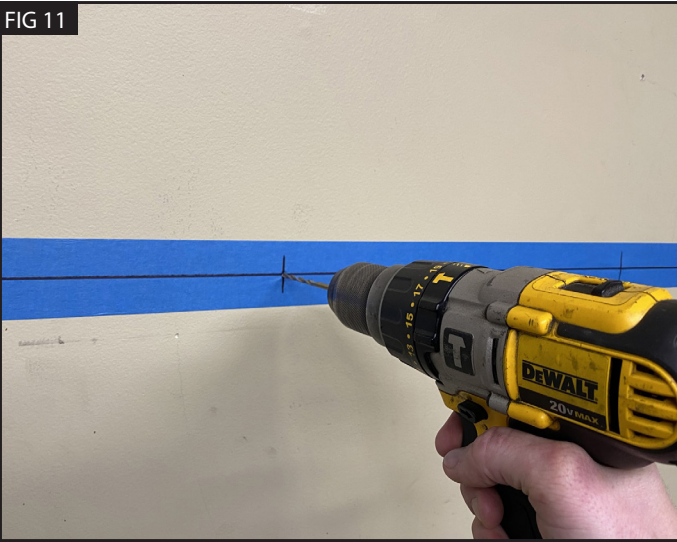
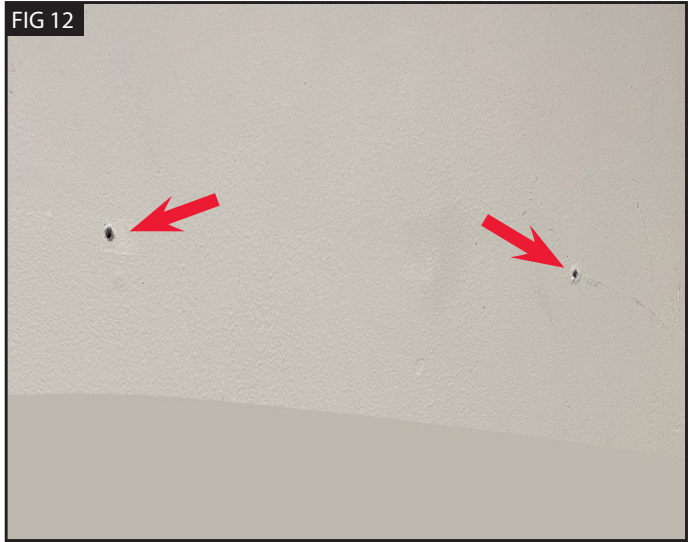


FIG 12



Next, using a 9/64" drill bit, drill four (4) 2.5" deep pilot hole for the four (4) mounting lag screws in the center of the wooden wall studs (FIG 11) After all four pilot holes are drilled remove the large section of painters tape to reveal the four (4) holes. (FIG 12)

STEP 7

FIG 13

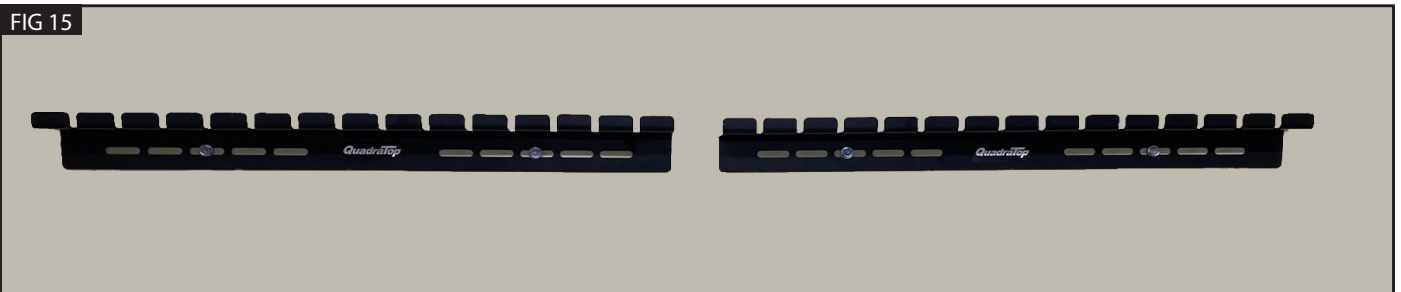


FIG 14



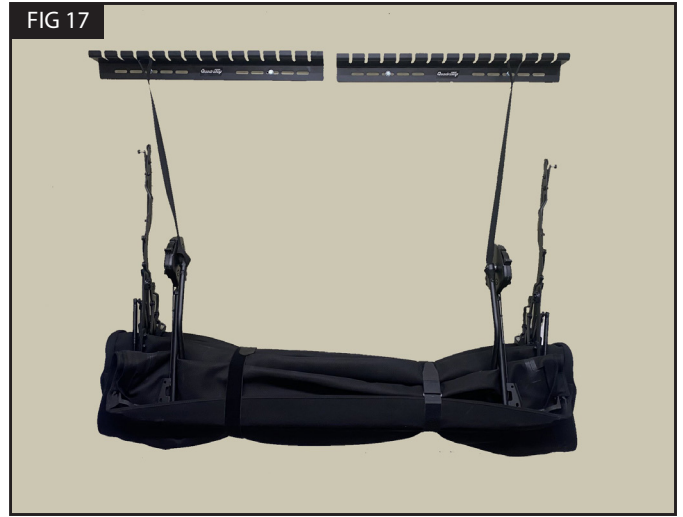
Next, secure one (1) of the Storage Brackets to the wall with two 5/16 x 2.5 lag screws. Center the bracket over two left or right mounting holes and using a 1/2 inch socket and ratchet screw the lag screws into the wall. (FIG 13) Repeat this process for the remaining bracket. (FIG 15)

FIG 15



The Soft Top Storage Hanger bracket must be lag bolted to a **NOTICE** wood wall stud. This kit only supplies the necessary fasteners and instructions to install the assembly to typical 1.5" wide (or wider) wooden stud. To mount the Door Storage Hanger to masonry walls such as brick or cinder block, consult a licensed building contractor for proper fastening and installation.

STEP 8 - USING THE SOFT TOP STORAGE HANGER SYSTEM



To hanging your Soft Top and other Soft Top Support Brackets, secure the Soft Top in the closed position by using the 48 inch hook & loop strap. Place one strap near each end of the soft top fabric section by passing the strap around the fabric then through the hook & loop's end plastic opening. Then pull tight and adhere the Hook section end back to the loop section around the Soft Top fabric. (FIG 16) Repeat this process for the other end. Then using two of the 32 inch Long Hanger Straps place them around the Soft Top frame section in a desired location to hang the Soft Top on the Wall Mount Brackets. (FIG 17)

STEP 8



Next, using the remaining 20 inch Short Hanger Straps use the loop at either ends of the straps wrap around the support pieces and back through the end loop to secure the strap on the support piece. Then using the remaining loop on the end of the strap hang the remaining Soft Top Support pieces on the Hanger Brackets. (FIG 18 & 19)

CAUTION

COMPONENTS MAY HAVE SHARP EDGES, EXTREME CARE NEEDS TO BE TAKEN TO AVOID INJURY OR DAMAGE TO SOFT TOP COMPONENTS AND PAINT DURING USE AND INSTALLATION OF THIS PRODUCT.

QuadraTop[®] Exclusive Three Year Limited Warranty

Your QuadraTop[®] branded accessories are covered by the following Limited Warranty provided exclusively by QuadraTop, Inc., 1028 Saunders Lane, West Chester PA 19380.

This Limited Warranty is the only warranty made in connection with your purchase. QuadraTop neither assumes nor authorizes any vendor, retailer or other person or entity to assume for it any other obligation or liability in connection with this product or Limited Warranty. This Limited Warranty does not apply and is not cumulative to any accessory or part distributed by QuadraTop for which the Manufacturer provides a separate written warranty.

What is Covered:

Subject to the terms, exclusions and limitations herein and with respect only to QuadraTop branded accessories first sold in the United States, QuadraTop warrants to the initial retail purchaser only that your QuadraTop accessory shall be free of defects in material and workmanship: for a period of three (3) years from date of retail purchase.

This Limited Warranty is not assignable and shall terminate upon sale of the vehicle upon which the QuadraTop accessory is installed or other transfer to third persons.

All other warranties are hereby disclaimed, except to the extent prohibited by applicable law in which case any implied warranty of merchantability or fitness for a particular purpose on this product is limited to three (3) years from date of initial retail sale. QuadraTop reserves the rights to: (a.) require invoice or other proof your accessory is within the terms of this Limited Warranty as a condition of warranty service and, (b.) make future revisions to this product and Limited Warranty without prior notice or obligation to upgrade your product.

What is Not Covered:

Your QuadraTop Limited Warranty does not cover products or parts QuadraTop determines to have been damaged by or subjected to: (a.) installation damage, alteration, modification, combination with other parts, failure to maintain or improper repair or service, (b.) normal wear & tear, cosmetic damage or damage from moisture or water immersion, (c.) Acts of God, accidents, misuse, negligence, inadequate mounting or impact with vehicle(s), obstacles or other aspects of the environment, (d.) theft, vandalism or other intentional damage.

Remedy Limited to Repair/Replacement:

The exclusive remedy provided hereunder shall, upon QuadraTop inspection and at our option, be either repair or replacement of product or parts (new or refurbished) covered under this Limited Warranty. Customers requesting warranty consideration should first contact QuadraTop to obtain a RGA number (610-701-3336). All labor, removal, shipping and installation costs are customer's responsibility.

Other Limitations - Exclusion of Damages - Your Rights Under State Law:

In consideration of the purchase price paid, neither QuadraTop nor any independent QuadraTop distributor/licensee are responsible for any time loss, rental costs, or for any incidental, consequential, punitive or other damages you may have or incur in connection with any part or product purchased. Your exclusive remedy hereunder for covered parts is repair/replacement as described above.

This Limited Warranty gives you specific rights. You may also have other rights that vary from state to state. For example, some states do not allow limitations of how long an implied warranty lasts and /or do not allow the exclusion or limitation of incidental or consequential damages, so the limitations and exclusions herein may not apply to you.

©QuadraTop, Inc. 2024. All Rights Reserved.

A4 Version 1.10.2024

Instructions Part# 12999-3260

