



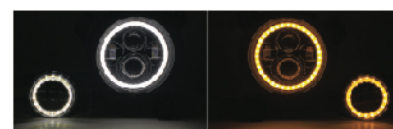
## JL 9 INCH HEADLIGHTS & JL 4 INCH FOG LIGHTS

- DIRECT FIT INTO 2018 AND UP JEEP JL WRANGLER
- WHITE DRL HALO
- AMBER SWITCHBACK TURN SIGNAL
- PLUG AND PLAY JL SPECIFIC CONNECTORS
- DOT AND SAE COMPLIANT

White DRL Halos



Amber Switchback Turn Signals



QTE962



QTE962 INCLUDES:  
2x SWITCHBACK HEADLIGHTS  
2x SWITCHBACK FOG LIGHTS  
2x 9005 to H13 ADAPTERS  
1x SAHARA and SPORT FOG MOUNTING KITS

1x JL BUMPER FOG HARNESS  
2x TURN SIGNALS ADAPTERS  
6x FLAT WASHERS

QTE960



QTE960 INCLUDES:  
2x SWITCHBACK HEADLIGHTS  
2x TURN SIGNALS ADAPTERS  
6x FLAT WASHERS

QTE961



QTE961 INCLUDES:  
2x SWITCHBACK FOG LIGHTS  
2x 9005 to H13 ADAPTERS  
1x SAHARA and SPORT FOG MOUNTING KITS  
2x TURN SIGNALS ADAPTERS  
1x JL BUMPER FOG HARNESS

## INTRODUCTION: These instructions are for both Headlights with Fog Lights or lights purchased as separated kits.

Thank you for purchasing our LED replacement headlights, fog lights and improving the safety of your vehicle. Videos can be found online to assist you with installing headlights into your specific vehicle. We have designed these LED replacement lights to be as easy as possible to install. At Quake LED, we always suggest you leave it to the professionals and have a qualified Quake LED technician install and adjust your new lights.



Quake LED replacement headlights and fog lights will only operate on 12 volts DC! Most vehicles are 12 volts DC, but if for some reason you plan to install these in your grandfather's M1 Abrams Tank, you should probably check the operating voltage before doing so.

If you are feeling up to the task and willing to spend the time to remove your stock headlights or stock fog lights, please read onward.

Record all Headlight and Fog Lights serial numbers here \_\_\_\_\_

### WARNING:

Read all instructions and warnings before installing and using.  
**INSTALLER:** This manual must be delivered to the end user of this equipment.



### UNPACKING and PRE-INSTALLATION

Carefully remove all the components and place it on a flat surface, taking care not to scratch or damage it. Examine for any visible damage caused by shipping and report any damage to the carrier and keep the shipping package. Take a good look at all the components so you are familiar with them before opening the hood.



— LIGHT UP THE DARKNESS —



## TOOLS REQUIRED:

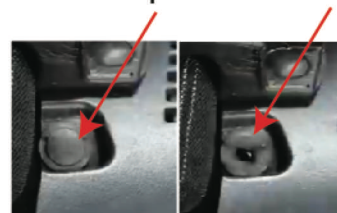
- Flat Head Screw Driver or Nylon Panel Removal Tool
- 10mm Socket, Ratchet/Drill and Ratchet Extension
- 10mm and 13mm Wrenches



## PROCESS

1. Like in every electrical install, you must unhook the battery. There are 10 mm nuts on top of the battery terminals. There is no need to remove the terminals themselves, just the cables connecting to them on top.

2. Remove the grill by taking out the (6) 2 piece push pins using a flathead screwdriver or panel popper. Popping the lower grill out requires some pulling from the bottom towards the bumper. It will feel like it is going to break but it will release with a little determination.



Next remove the stock headlights held in with 3 bolts on each light, using a 10mm socket. Unplug the stock headlights by pushing the backside connector tab on the wiring harness with your thumb.

3. Reinstall your new Quake LED JL headlights into your vehicle. Re-use the 3 mounting screws and connect the new headlight connector into the stock JL headlight connector. Test that your new LED headlights turn on high and low beams.

If not wiring up DRL or Amber Turn Signals you can proceed to step (8). If you plan to wire the White DRL Halos to turn on with the running lights. Run the DRL and Amber Turn signal wires into the fender area and back towards the firewall.

Wait to install your grill until you have tested everything and all functions as it should. At the end of the headlight install and before we install the grill. We will check the beam location and adjust if necessary.

4. Now you need to locate the stock fender connector on each side and install our JL Fender Harness Adaptors. Start on the passenger side. Remove the ground wires from the fender next to the battery. First remove the nut held on with 13mm nut. Next remove the nut next to it holding them to the fender with a 10mm wrench. (be very careful not to drop the nuts) move the ground wires out of the way to access the front fender harness. It is located directly below the ground bolts.



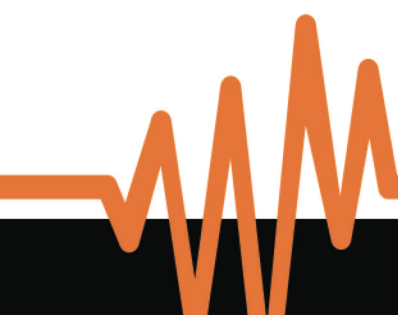
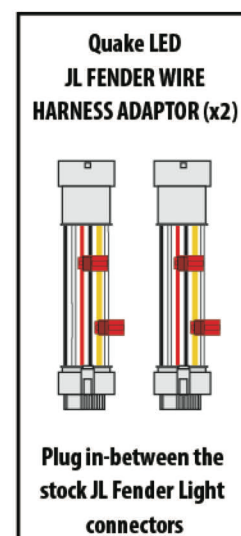
5. Locate the stock JL Fender Wire Harness connector. Disconnect the stock Male and Female connectors. Install our JL Fender Harness Adaptor in between the two stock connectors. Our unique JL Fender Harness Adaptor allows you to easily tap into the stock wires WITHOUT cutting ANY stock JL wires thus voiding your warranty.

Do the same on the drivers side and locate the stock JL Fender Wire Harness connector.

6. Connect the White DRL Halo wire (red wire) to the Red Wire T-Tap on the JL Fender Wire Harness Adaptor.

7. Connect the Amber Turn Signal wire (yellow wire) to the Yellow Wire T-Tap on the JL Fender Wire Harness Adaptor.

Reinstall the black box with the 10mm bolts back on the fender.





8. JL Fog Light Mounting Kits. Different JL trim levels have different bumpers. Either you have a JL Sport, JL Unlimited or a JL Sahara/Hard Rock bumper. Our JL Fog Light kits include necessary brackets and all hardware. Look at the matrix below to figure out what bracket and hardware you need and where to mount those parts. If you plan to install the fog lights in a aftermarket front bumper. Use our included JL Fog Wire Harness in your new bumper to connect the fog lights to the JL. Removing the stock fog wire harness in the stock front bumper is a PITA. Use our wire harness and save over a hour of labor! It's on the house! We also install and work on Jeeps. We get it!!!

	SPORT BUMPER	UNLIMITED BUMPER	SAHARA BUMPER
PHOTO			
BRACKET NEEDED		NO BRACKET NEEDED	
BRACKET LOCATION (RED)			
INSTALL PHOTOS			
INSTALL PHOTOS			

9. Disconnect the stock fog light power connector and remove your stock JL fog lights. Reinstall your Quake LED fog lights. Refer to the above matrix to determine which brackets and hardware you will need. Run the DRL and Amber Turn signal wires into the fender area and connect to same area as JL Fender Wire Harness Adaptor.

10. Connect the White DRL Halo wire (red wire) to the Red Wire T-Tap on the JL Fender Wire Harness Adaptor.

11. Connect the Amber Turn Signal wire (yellow wire) to the Yellow Wire T-Tap on the JL Fender Wire Harness Adaptor.

12. Before you install the grill and finish the install. You will need to make sure the beam location is not too high up and potentially blinding oncoming traffic. On the other hand you don't want the beam too low and not illuminating forward enough to see what is in front of you. Since most Jeeps have a 2" lift and 35" tires. We have designed the headlights to fit this type.

In the case that you're Jeep is stock and or is 4" lift and 37" tires or more. You might have to adjust the beam using the included flat washers and locating them under the mounting brackets.

**Stock Jeep:** Add 1 flat washer under the lower bracket on each side if you want to raise the beam and project the beam further down the road.

**Lifted Jeep:** Add 1 flat washer under the 2 top brackets on each side if you want to lower the beam and project the beam less down the road.



Test that all functions work correctly and secure all wires with plastic cable ties.





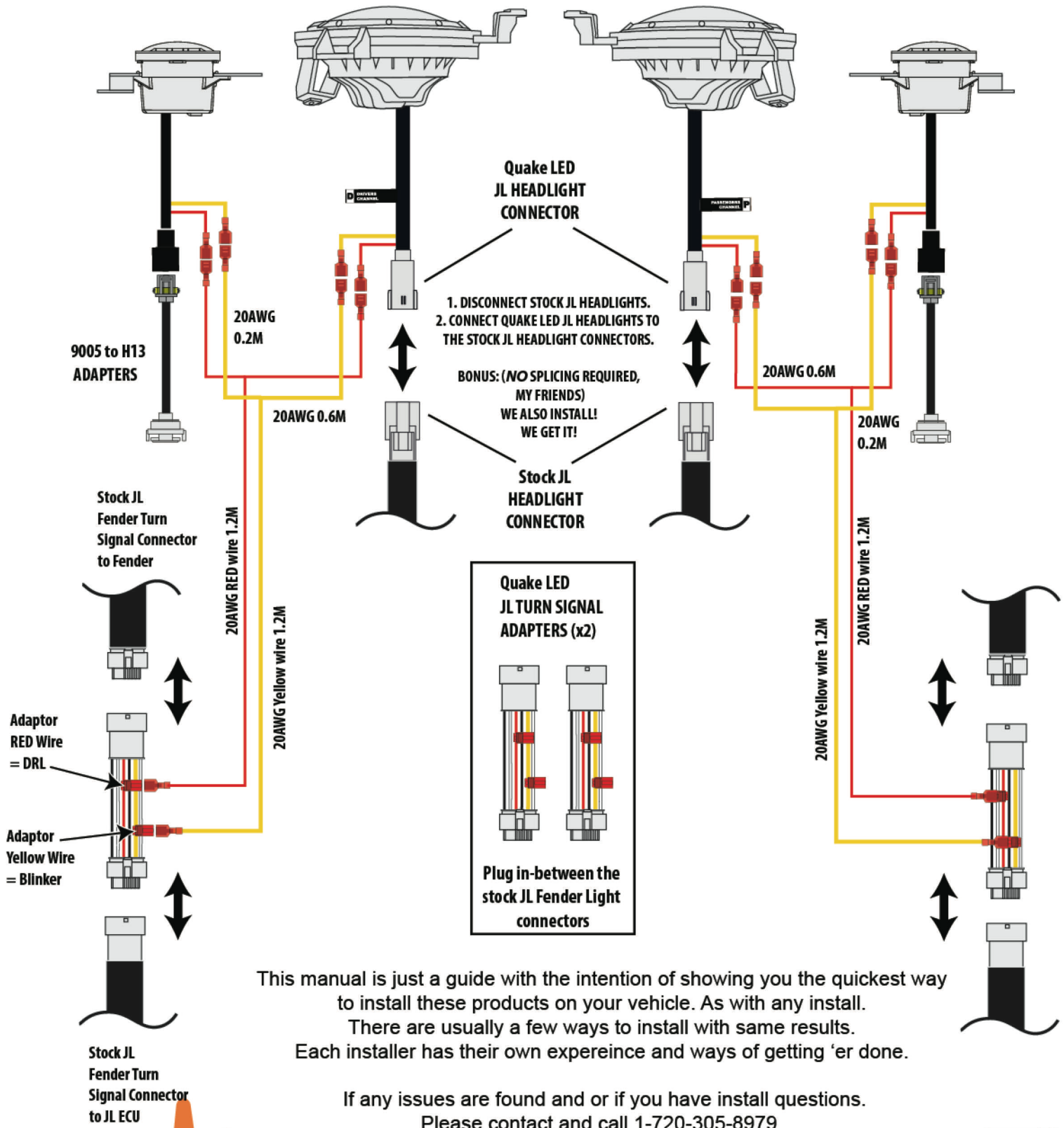
**WIRE DIAGRAM**

**FRONT of JL**



**DRIVERS SIDE**

**PASSENGERS SIDE**



This manual is just a guide with the intention of showing you the quickest way to install these products on your vehicle. As with any install. There are usually a few ways to install with same results. Each installer has their own experience and ways of getting 'er done.

If any issues are found and or if you have install questions. Please contact and call 1-720-305-8979

*-Wire Diagram is for Illustration Only.  
-Actual wire harness lengths and wire gauge are not to scale.  
-Actual wire harness components are not to scale.*

