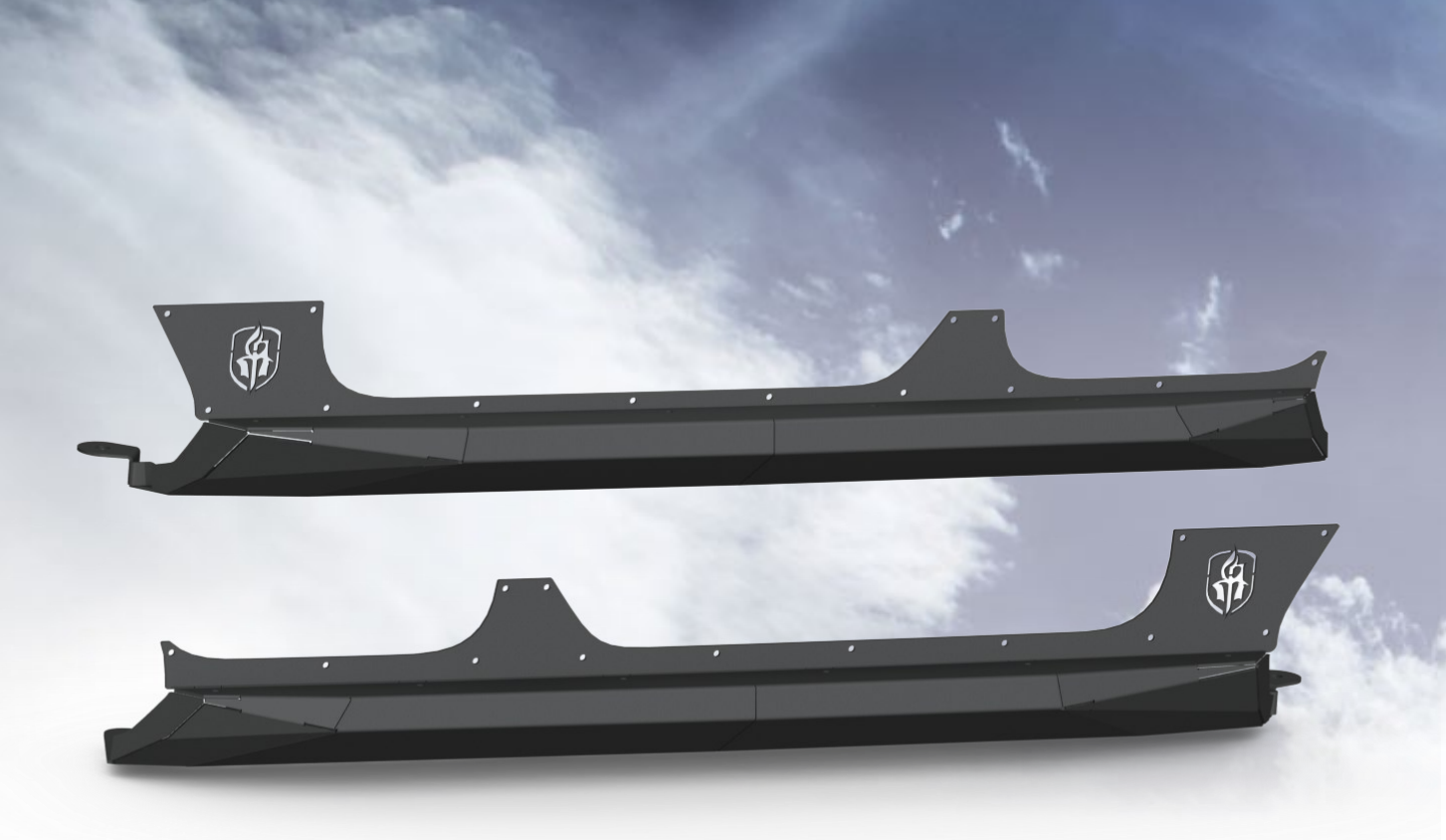


ROAD ARMOR

RULE THE ROAD



INSTALL INSTRUCTIONS

Jeep JKU Rocker Guards

Product : 507ARG4

Application : 2007+ Jeep Wrangler JK

(4 Door ONLY)

I WARNING

Read the instructions completely before beginning installation. Before tightening bolts, drilling or cutting where required, check to make sure there are no obstructions such as brake, fuel or electrical lines which may be damaged. Also keep in mind this is an after-market product and MAY require minor shimming and/or trimming, reaming, etc. for proper fit. Road Armor is not responsible for any damages to vehicle.

IMPORTANT NOTICE

- Be sure to inspect and test fit your product to ensure proper fitment before having it coated, painted, bed lined, etc.
- Road Armor will not be responsible for the cost of coating your unit if any problems with fit or finish are not noted and addressed beforehand.

SAFETY FIRST!

- FOLLOW ALL INSTRUCTIONS, YOUR SAFETY AND THE SAFETY OF OTHERS IS MOST IMPORTANT.
- WEAR APPROPRIATE EYE PROTECTION AND EXERCISE CAUTION WHEN DRILLING / CUTTING

REQUIRED TOOLS

Metric and SAE Socket Sets and Wrenches

Floor Jack and Block of Wood

Welding Clamps (recommended)

Nutsert Installation Tool

17/32" Drill Bit & Step Bits

Rust Inhibiting Paint or RTV Silicone

INCLUDED HARDWARE

507ARG4 (JKU)

(6) 5/16"-18 x 3/4" Button Head Bolts

(34) 5/16"-18 x 1-1/4" Button Head Bolts

(26) 5/16"-18 Nutsert Rivets

(14) 5/16"-18 U-Nuts

(40) 5/16" Washers

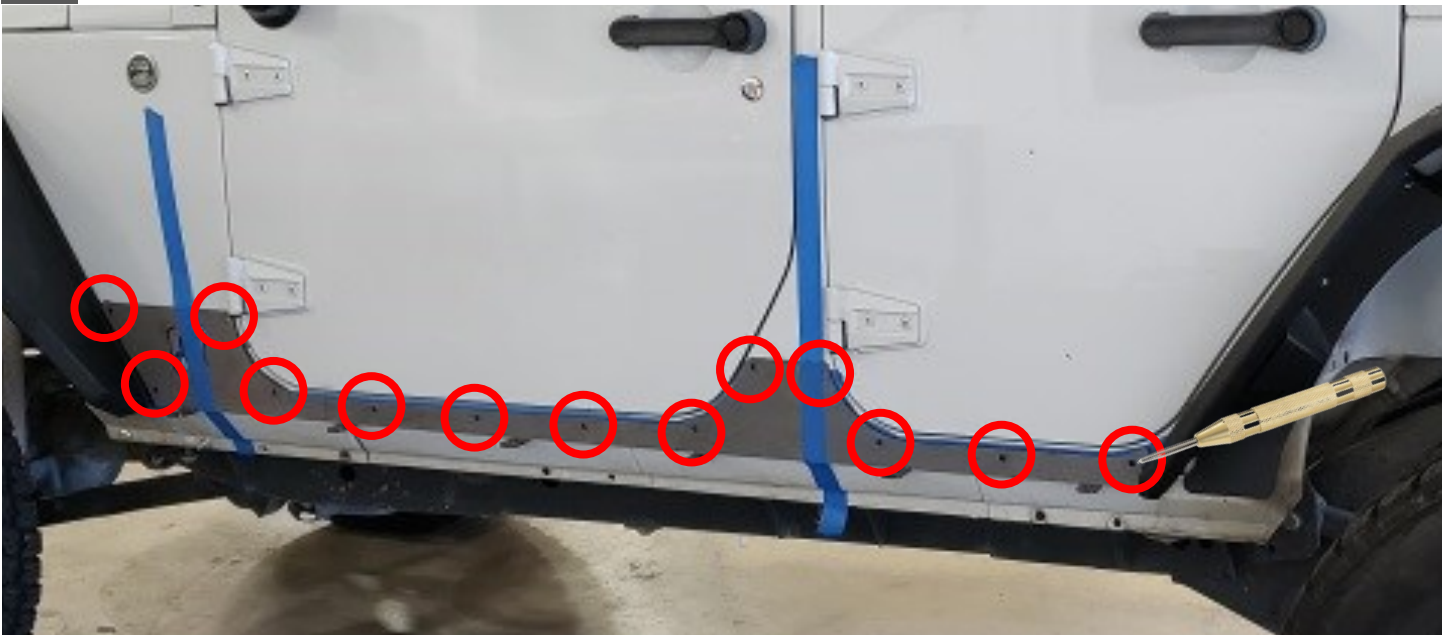
(2) M8-1.25 x 8mm Bolts

- 1** Remove Factory Running Boards
Skip this step if not equipped.



- 2** Tape off where the Road Armor Rocker Armor may come into contact with the body to prevent scratching the paint. You may choose to either put tape on the body, or against the back edge of the skins.

- 3** Align and secure rocker armor along lower door jams; mark all holes for drilling. Use C-Clamp or strong tape to hold Rocker Armor in place. Once marked, remove rocker guard. (**Circles**)



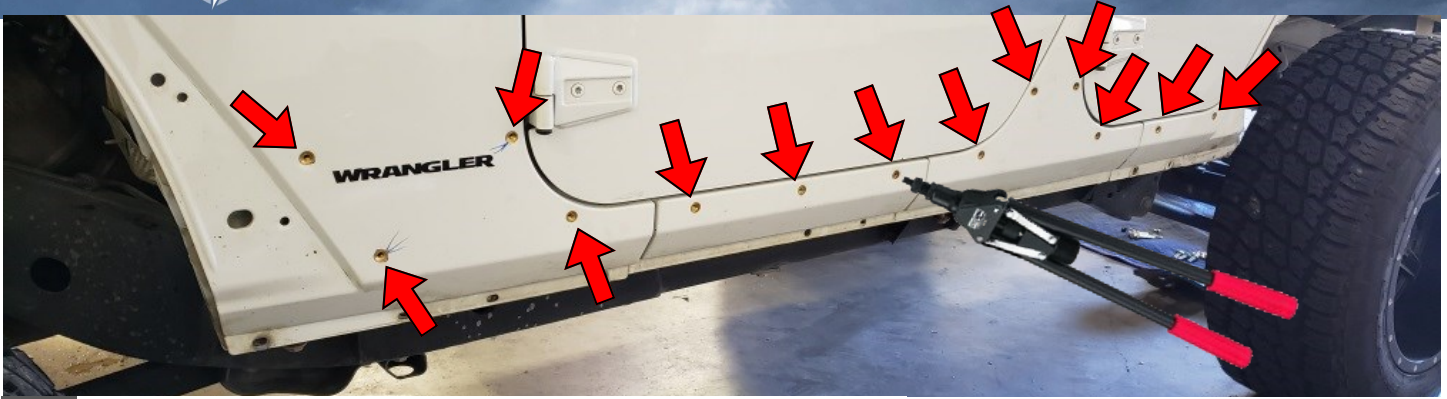
- 6** Drill with either a step bit or by graduating to larger drill bits manually; drill body holes to 17/32-in or 0.531-in ****ONLY**** (9/16" is too large a hole and will likely result in a nutsert which is loose and may spin. This is an important step. Be patient and take your time while drilling to not exceed hole size.)

6



Step Bits





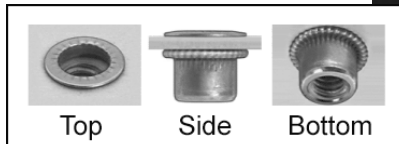
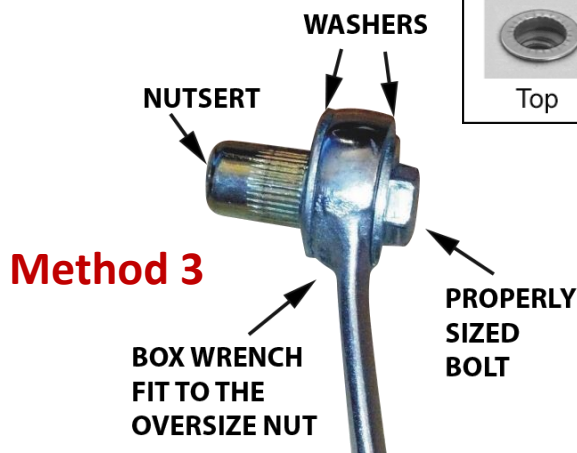
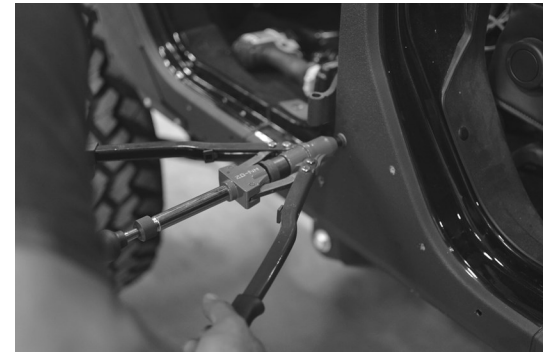
7 Now begin installing the nutsert rivets.

There are several means for this which we will discuss here.

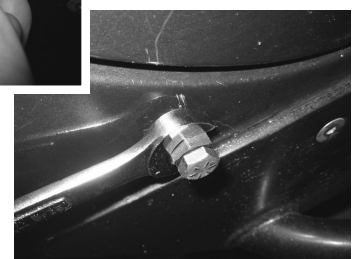
- 1) A professional nutsert tool similar to the one shown. This tool was acquired from Fastenal and has swappable mandrel tips for different applications. **TOOL : # 0126106 | TIP : # 0128345 (3/8-16)**
- 2) Another specific tool for nutserts which works with wrenches.
- 3) DIY Makeshift tool using a bolt, oversized nut, a couple washers and a pair of wrenches as in #2.

For all methods, first thread the nutsert onto tool of choice. With methods 2 and 3 you should use anti-seize on the tool threads. Place the nutsert flush to the body and while holding the base steady simply tighten the bolt. It will have some resistance at first but once it begins crushing it will become easier until fully compressed. Get it good and tight being careful not to spin it! With skill and experience an impact will make light work of this step.

To prevent rust, apply a bead of RTV silicone behind the flange of the nutsert, or paint the raw steel around each hole with a brush.

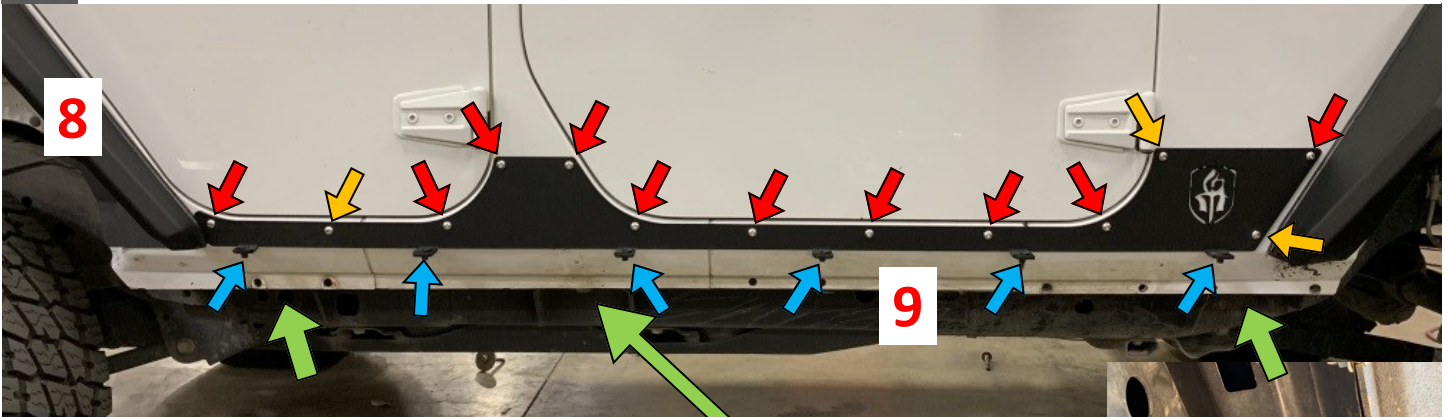


Method 2



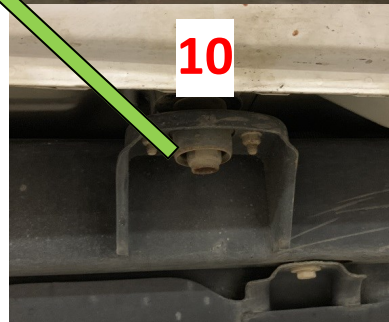
8 Install Rocker Armor using 5/16" Hardware. (5/16 x 1-1/4" **RED**) & (5/16 x 3/4" - **ORANGE**)

9 Install 5/16" C-Clip Hardware onto rocker guard lower tabs as provided. (**BLUE** Arrows)



10 Remove three center OEM 12mm body bolts from cab.
(**GREEN** Arrows.)

11 '07-'10 Only Install one - 5/16" C-Clips onto center of body channel (**RED** Arrows.)

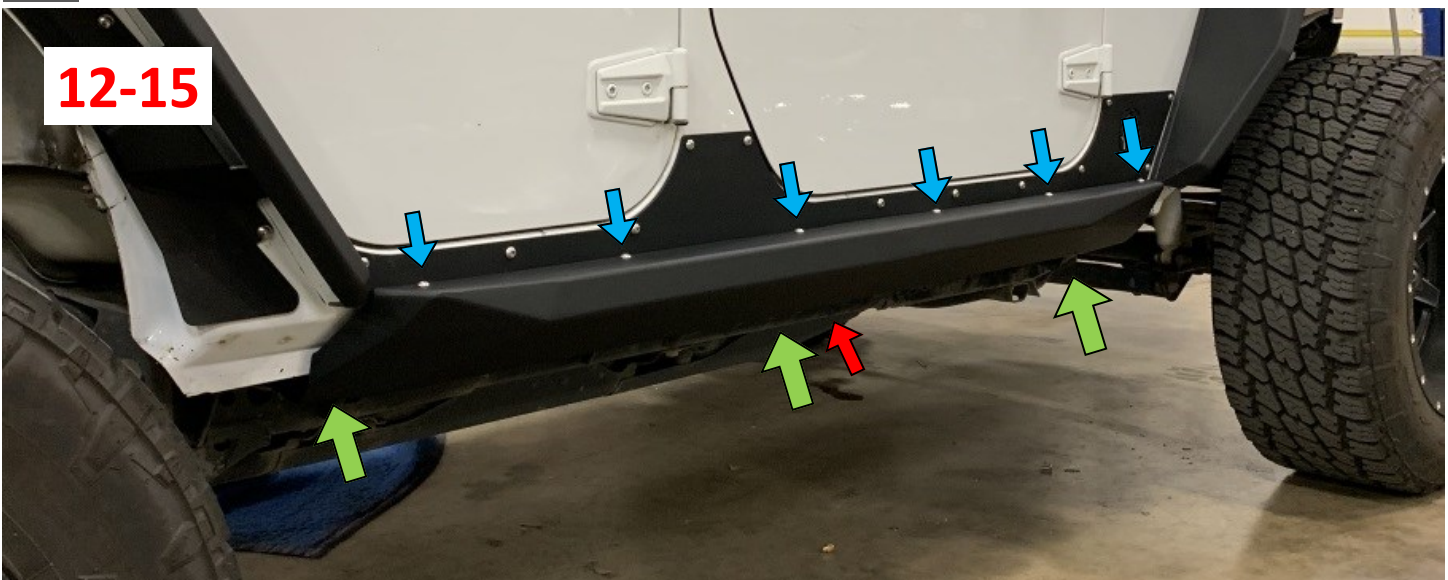


12 Loosely install Rocker Guard using 6 - 5/16 x 1-1/4" hardware provided. 6 along Rocker Armor Tabs and 1 - 5/16" along body channel for '07-'10. (Floor Jack may be required to align center hole) (**BLUE**)

13 '11-'18 on install M8-1.25x30mm bolt and washer through rocker bracket & center body seam. (**RED**)

14 Reinstall three center OEM 12mm body bolts through Rocker Armor. (**GREEN** Arrows.)

15 Once all 5/16 x 1-1/4" hardware and Rocker Guard has been aligned and install, **TIGHTEN** hardware.



12-15