



INSTALL INSTRUCTIONS

STEALTH Rear Full-Width Winch Bumper

Product : 5203R0B

Application : 2020 JEEP GLADIATOR JT

I WARNING

Read the instructions completely before beginning installation. Before tightening bolts, drilling or cutting where required, check to make sure there are no obstructions such as brake, fuel or electrical lines which may be damaged. Also keep in mind this is an after-market product and MAY require minor shimming and/or trimming, reaming, etc. for proper fit. Road Armor is not responsible for any damages to vehicle.

ⓘ IMPORTANT NOTICE

- Be sure to inspect and test fit your product to ensure proper fitment before having it coated, painted, bed lined, etc.
- Road Armor will not be responsible for the cost of coating your unit if any problems with fit or finish are not noted and addressed beforehand.

SAFETY FIRST!

- FOLLOW ALL INSTRUCTIONS, YOUR SAFETY AND THE SAFETY OF OTHERS IS MOST IMPORTANT.
- WEAR APPROPRIATE EYE PROTECTION AND EXERCISE CAUTION WHEN DRILLING / CUTTING

REQUIRED TOOLS

Metric and SAE Socket Sets and Wrenches

Screw Driver

INCLUDED HARDWARE

(6) 1/2" x 2" Bolt Tabs

(4) 1/2" x 1.5" Bolt Tabs

(6) 1/2" Keeper Washers

(10) 1/2" Grade 8 Washers

(10) 1/2" Hex Nut

(10) 1/2" Grade 8 Lock Washers

(2) 1/4" License Plate Screws

(2) 1/4" License Plate Nylon Nuts

(4) 1/4" Washers

(2) 1/4" Lock Nut

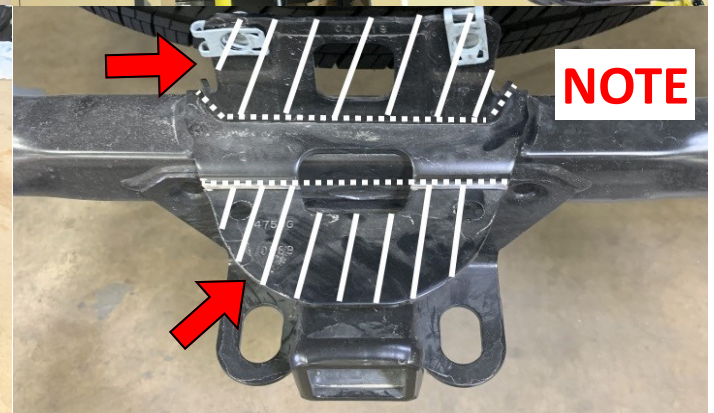
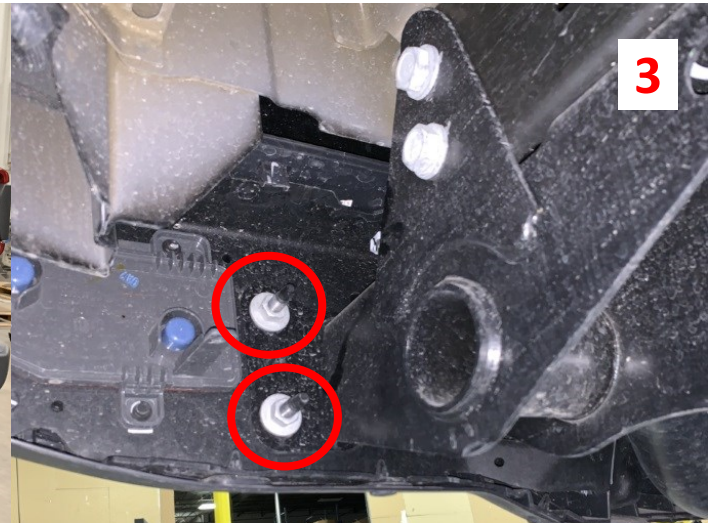
(2) License Plate Lights & #8 Hardware

(1) Stain Steel Road Armor Logo Letters and Hardware

(4) 1 1/16" Sensor Plug

(4) 1 1/16" Sensor Grommet

- 1 Disconnect the rear bumper harness, release the clips holding the bumper end of the harness to the Jeep. Connector is located inside the driver side hitch of the Jeep. Remove hitch harness and plug from bumper.
- 2 Using a 16mm socket, remove license plate and 2 bolts securing the center of bumper to hitch.
- 3 Using a 16mm socket, remove 2 bolts securing the bumper outer mounting brackets to the rear hitch from ea. side.
- 4 Pull off factory bumper and set aside.
- 5 Remove factory recovery hook using 21mm socket; 2 bolts on the top, through the hitch.



- 6 If equipped, disassemble rear bumper, carefully remove all sensors and harnesses. ****Note sensor location****

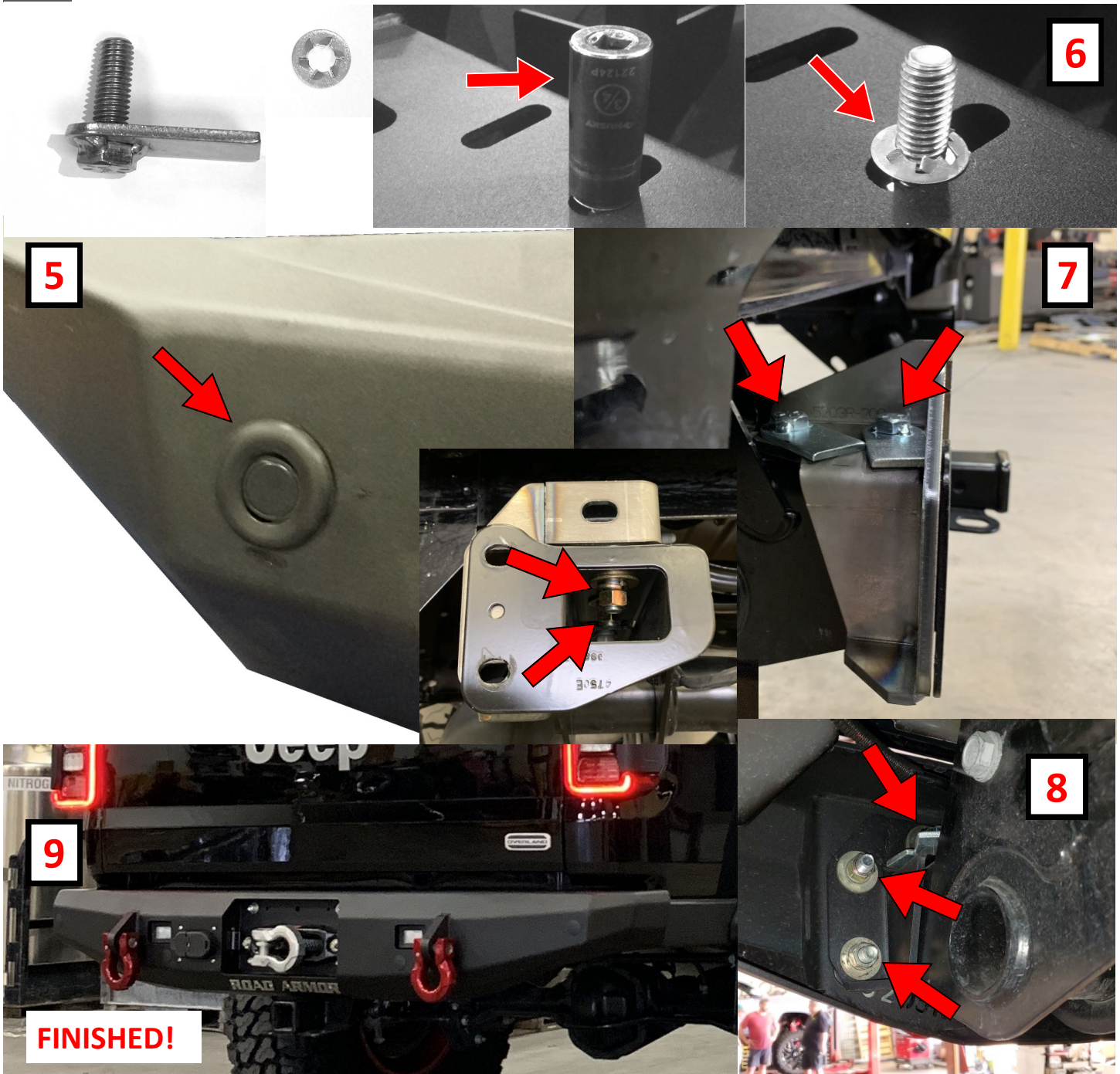
STOP IF INSTALLING REAR WINCH—CONTINUE WITH install STEP 5 Below - TECH Tips on Last Page **STOP**

****DISASSEMBLY COMPLETE****

- 1 Install Road Armor Logo with included #10 Stainless Button Head Bolts and Keps Nuts.
- 2 Install both 3x2 (**SRM SURFACE MOUNT**) lights, as this is easier now than after Road Armor bumper has been installed.
- 3 Install hitch pin plate with included #10 Stainless Button Head Bolts and Keps Nuts
- 4 Install both license plate lights using #8 hardware, as this is easier now than after Road Armor bumper has been installed.

NOTE If installing winch do so at this time: Install 8000lbs Winch on to winch plate.(License Plate Relocation Bracket: **LPF360B**)

- 5 **If equipped:** Insert 4 kit grommets into bumper holes followed by all sensors and harness. ****Original sensor location****
- 6 Install 6 - 2" bolt tabs through bumper using the included keeper washers. Use a 3/4" deep socket to push the washers over the threads.
- 7 Install both bumper brackets onto outside of hitch as shown below. Use 2 - 1 1.5" bolt tabs to secure each bracket to hitch using a washer, lock washer and nut over each bolt.
- 8 Install new Road Armor bumper by starting a washer, lock washer and nut over each bolt. Once all nuts are finger tight, check fitment and tighten them all down. Check that all the bracket bolts are fully tight as well.
- 9 Reconnect bumper all wiring harness and ensure all wiring is secured. (Wire license plate light to factory harness.)



Installation Tips - STEALTH Winch Rear Bumper

- 1 When installing "hawse" Fairlead, use 2 - 3/8" bolts (supplied with winch) to install fairlead onto winch mounting plate.
- 2 If installing "roller" fairlead, use bumper as templet to drill out 3/8" holes shown below with **blue arrows** (allows the bottom two winch bolts to bolt through the fairlead bracket and into the winch.) (Longer winch bolts will be needed.)
- 3 Install winch by placing winch onto mounting plate (lever on passenger side); use 4 - winch bolts through plate to install winch onto bumper. (**Green Arrows**) (longer bolts may need to be purchased depending on what mounting bolts were supplied with the winch.) (License Plate Relocation Bracket Available for Purchase: **LPF360B**)

