



Made in the USA

# Step Slider Skid Plate

AX-SS-SP-JT4



**CONGRATULATIONS ON YOUR PURCHASE OF THE SKID PLATE!**

DESIGNED TO BE FUNCTIONAL, TOUGH, AND DURABLE

STRENGTHENS STANDARD STEP SLIDERS.

### ***TOOLS REQUIRED FOR INSTALL***

- 1/2" Socket & Driver
- 7/16" Open End Wrench
- Hammer

## Step 1

If you have installed the step sliders, and this is being added afterwards, skip step one

If installing with the step sliders at the same time, and the step sliders have not been installed yet, follow steps skip to step two

Remove the 12 bolts on the underside of the step slider.



## Step 2

Remove plugs from the side of the step slider body (if installed)

Remove the stainless steel tag off of the body of the step slider using a drill or dremmel on the small rivet.

Align the skid plates to the side of the step slider, install 1-2 bolts back in to the mounts loosely per side to hold the skid plates in place, push the drive rivut into place, and applying pressure to the skid plate to keep them tight against the body of the step slider, hit the drive rivut head with a hammer to expand the bulb.

Repeat that process with the rear sections of skid plate.





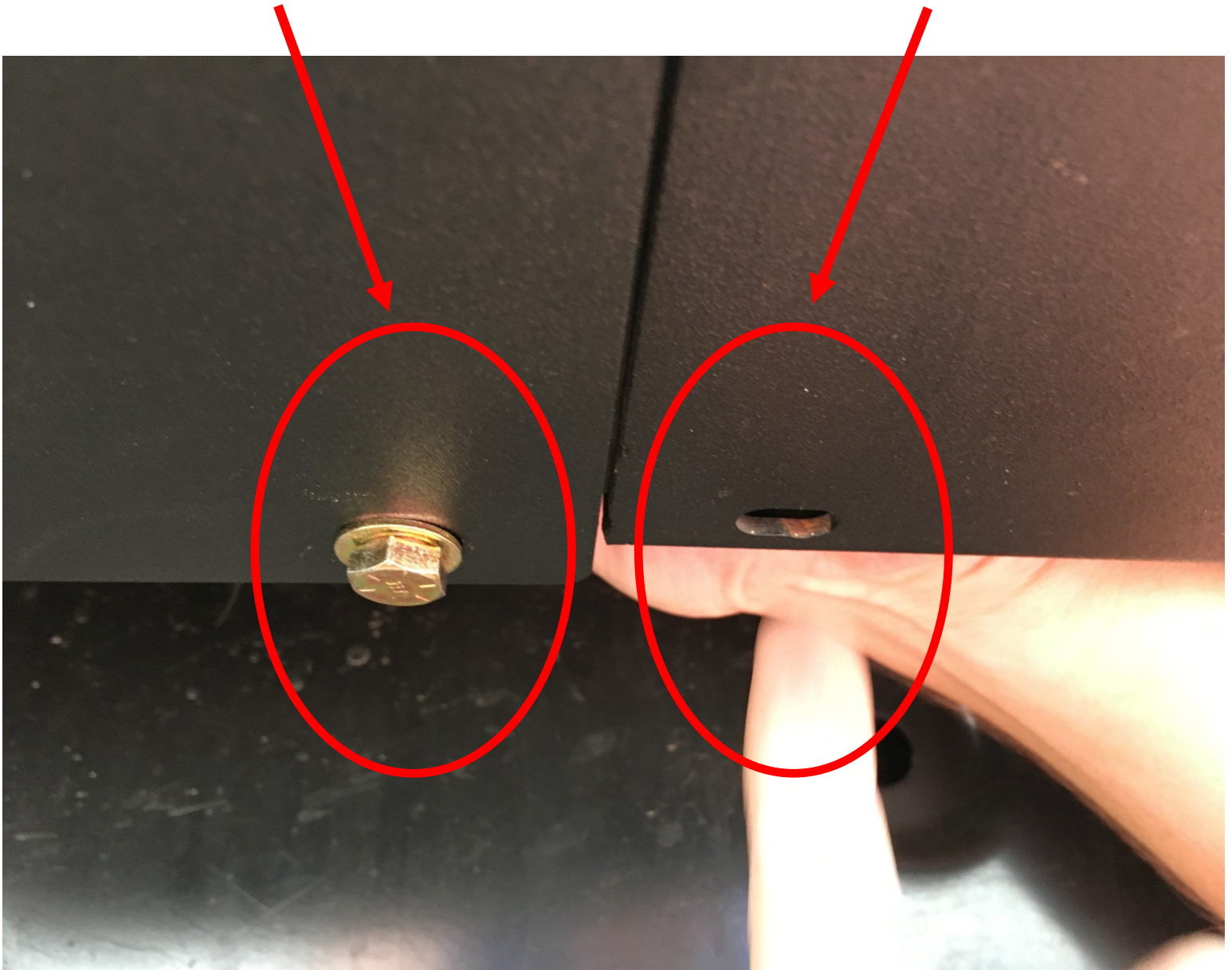
### Step 3

With the skid plate drive rivuts installed, tighten the bolts back on the underside of the jeep to the mounting points.



### Step 4

Install 2 extra 5/16" bolt and washer into the holes on the underside of the skid plate / step slider body nearest the seam between the extension piece and main body. Install one bolt per hole, two bolts per side with a nut and washer on the inside of the body. This will tighten down the skid plates to the body so there is no rattle.



## **PRODUCT INFORMATION:**

LIMITED LIFETIME WARRANTY FOR STRUCTURAL AND MECHANICAL COMPONENTS

LIMITED TWELVE (12) MONTH WARRANTY FOR FINISH AND ELECTRICAL COMPONENTS

Rock-Slide Engineering, LLC (“R-SE”) warrants to the original purchaser that (a) the structural and mechanical components of the Step Sliders will be free of defects in material and workmanship for the lifetime of the Step Sliders (the “product”), and (b) the finish (powder coat) and the electrical components (including the motor) will be free of defects in material and workmanship for a period of twelve (12) months from the original date of purchase. This warranty applies only to the original retail purchaser. Warranty is void if product was not purchased directly from R- SE or from an authorized R-SE retailer or reseller. This warranty applies only with regard to the original installation of the product to the original vehicle. This warranty does not cover removal or reinstallation of the product.

To exercise this warranty and receive any warranty service, the original purchaser must provide R-SE with proof of purchase and date of purchase that is acceptable to R-SE, such as a copy of the original purchaser’s purchase receipt. The original purchaser must return the defective product to R-SE along with a description of the problem, a copy of the original purchase receipt, the original bill of sale and all contact information (name, address, telephone number and email address). To begin the warranty process, the original purchaser must email R-SE’s warranty department.

During this warranty term, and upon the original purchaser’s valid exercise of this warranty, R-SE shall, at its option, repair or furnish a replacement product in the event the original product is deemed by R-SE to be defective. R-SE’s sole liability shall be for repairing or replacing the product, but R-SE may refund the purchase price at its sole discretion and option. The original purchaser is responsible for prepayment of all shipping and/or transportation charges with respect to the exercise of this warranty. The product may change without notice. In the event of a product change, R-SE has no obligation to upgrade or modify any older generation product.

THE WARRANTY SET FORTH HEREIN IS THE ONLY WARRANTY COVERING THE PRODUCT. NO OTHER WARRANTY EXISTS, EXPRESS OR IMPLIED, INCLUDING, WITHOUT LIMITATION, IMPLIED WARRANTIES OF MERCHANTABILITY AND/OR FITNESS FOR A PARTICULAR PURPOSE. No retailer, reseller, dealer, agent or employee is authorized to make any modifications, extensions, amendments or additions to this warranty.

This warranty shall be void in its entirety if R-SE determines that the product installation was modified, changed, altered, customized or in any way used other than as instructed. Installation of the product without strictly adhering to the installation instructions shall void this warranty. Installation must be on the proper vehicle or warranty is void.

R-SE SHALL NOT BE LIABLE FOR SPECIAL, INDIRECT, INCIDENTAL OR CONSEQUENTIAL DAMAGES, UNDER ANY LEGAL THEORY AND/OR UNDER ANY CIRCUMSTANCE WHATSOEVER. IN ANY EVENT, ANY DAMAGES IN ANY SITUATION SHALL BE LIQUIDATED DAMAGES AND MAY NOT EXCEED THE RETAIL PRICE OF THE PRODUCT. R-SE SHALL NOT BE LIABLE FOR ANY LOSS, DAMAGE OR INJURY DIRECTLY OR INDIRECTLY ARISING FROM THE USE OF OR INABILITY TO DETERMINE THE USE OF THE PRODUCT. THE ORIGINAL PURCHASER IS RESPONSIBLE TO DETERMINE THE SUITABILITY OF THE PRODUCT FOR ITS INTENDED USE, PRIOR TO USING THE PRODUCT, AND THE ORIGINAL PURCHASER ASSUMES ALL RESPONSIBILITY AND RISK IN CONNECTION THEREWITH.

---

## **PATENT INFORMATION:**

This product is covered by multiple US issued patents.

**PAT US 9,771,024 B2**

**PAT US 8,833,781B2**

**PAT US D718,1955**

Have feedback, thoughts, or suggestions?

Please email us!

We would be happy to make our instructions easier to read and value your feedback.

**WARRANTY@ROCKSLIDEENGINEERING.COM**