



MADE IN THE USA

INSTALLATION MANUAL

STEP SLIDER BD-SS-200-JT4



Description	Quantity
Electric Step Slider (Pair)	2
Bump stop plate with VHB backing	2
Wiring harness (2 piece)	1
VHB Backed Sensors	4
Magnets	4
Alcohol wipes	4
Rocker cutoff switch	1
Anti-seize packet	1
Circuit board	1
5/16" - 18 nylock nut	18
5/16" stainless steel washer	26
1/4" - 20 nylock nut	6
1/4" - 20 stainless steel washer	6
5/16" - 18 X 1" grade 8 hex head	32
5/16" SAE yellow zinc washer	24
Front bracket (Short drop style)	2
Middle bracket (Flat style)	2
Rear brackets (Tall drop style)	2
Rocker cutoff switch bracket	1

Front Bracket



Middle Bracket



Rear Bracket



Tools Required	
8 mm socket	10 mm socket
18 mm socket	7/16" box end ratcheting wrench
1/2" box end ratcheting wrench	1/2" socket with torx gun & adapter
1/2" drive ratchet	
Breaker bar	

**Optional for quicker install

Torx Gun with adapters	Heavy Duty Torx Gun with 1/2" driver
------------------------	--------------------------------------

Notes and Maintenance

Before you begin installation, read all instructions thoroughly.

Proper tools will improve the quality of installation and reduce the time required.

No maintenance required on waterproof harness or water-resistant motors. If mud or dirt is built up on the steps, simply spray them off and let them air dry.

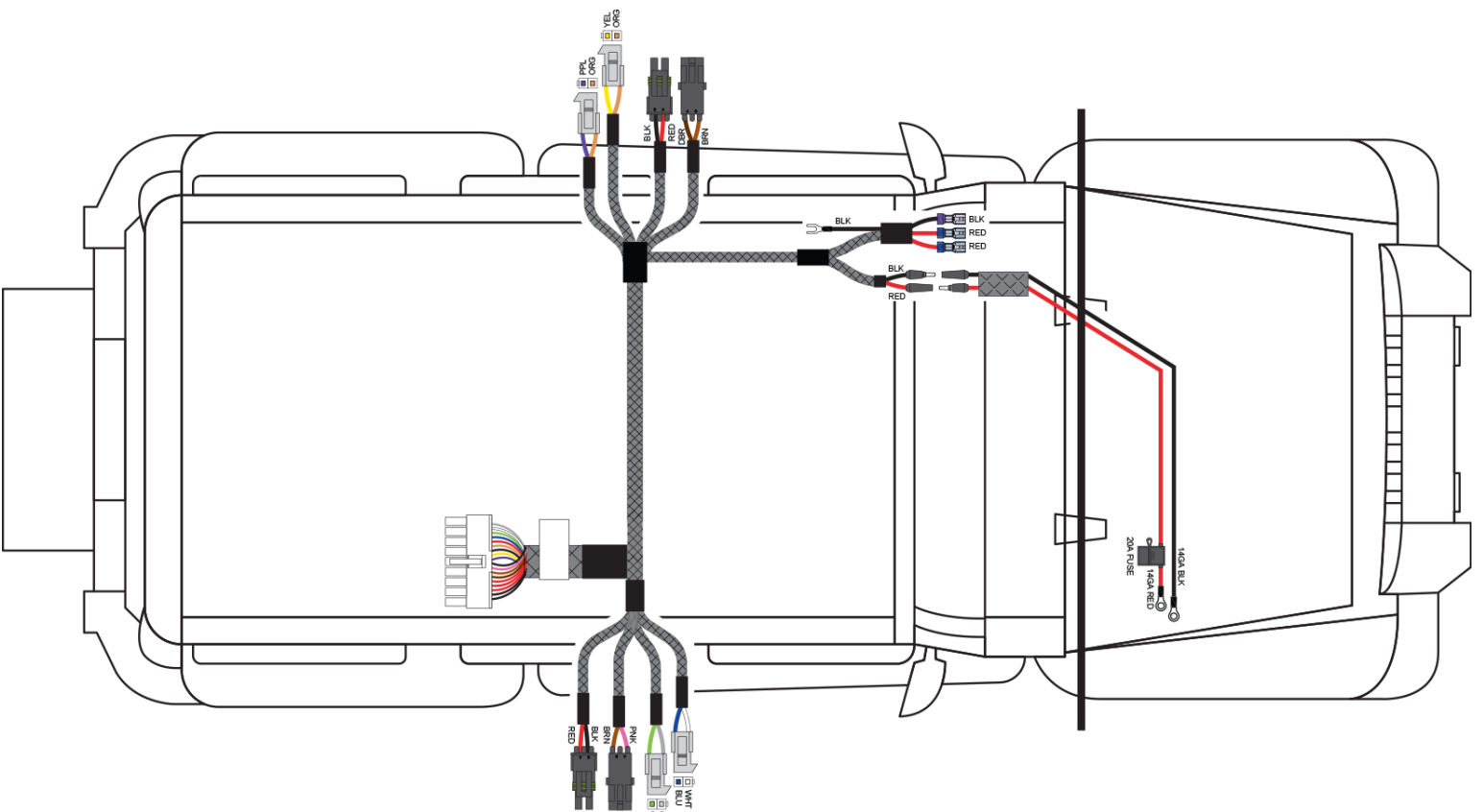
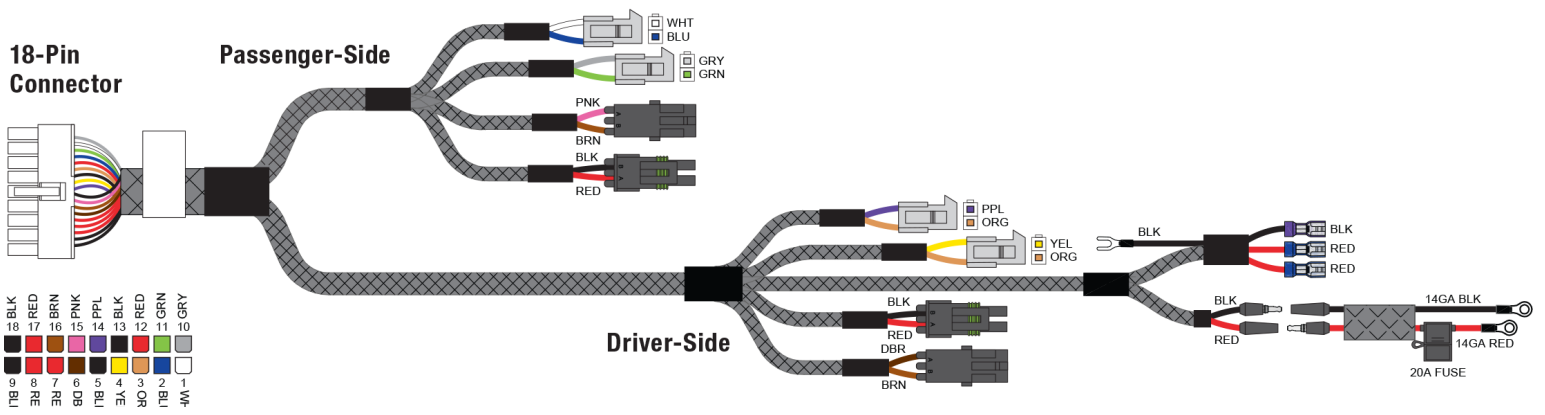
Mild automotive detergent may be used to clean the product. Do not use dish detergent, abrasive cleaners, abrasive pads, wire brushes or other similar products that may damage the finish.

Periodic inspection of all wires and connections should be performed to ensure there is no visible damage or loose connections.

Refer to the last page of this manual for troubleshooting, warranty and product registration information.

Wiring Locations

Driver	Door sensor, rear	Purple / Orange
	Door sensor, front	Yellow / Orange
	LED light	Brown / Dark brown
	Actuator	Black / Red
Passenger	Door sensor, rear	White / Blue
	Door sensor, front	Grey / Green
	LED light	Pink / Brown
	Actuator	Black / Red

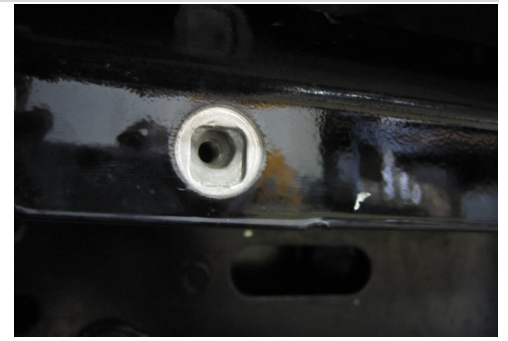
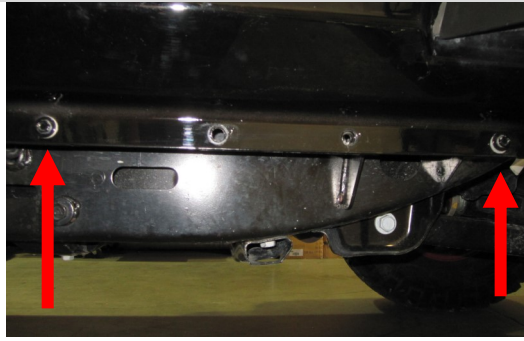


Step 1

Start on the drivers side.

Remove two front pinch seam bolts using a 10mm socket and wrench. Leave the holes open.

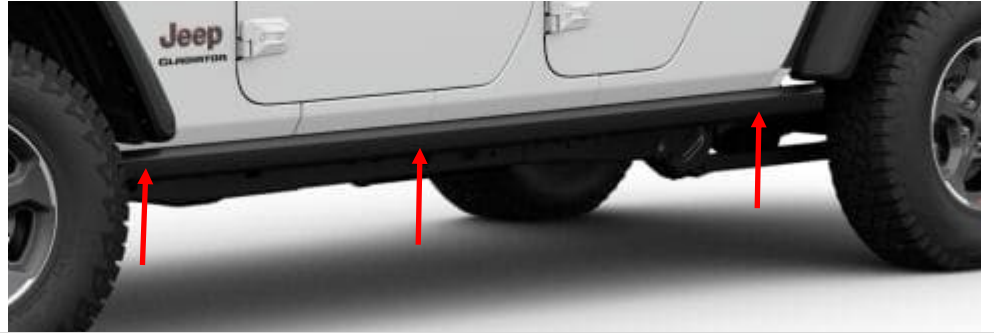
Keep the hardware as you will re-install it in the final step



Step 2

Starting on the driver side, locate the three body bolts on the underside of the vehicle. Back the three body bolts about 1/4" to allow free movement of the washer up and down.

**Breaker bar may be required to loosen the body bolts. SEE BELOW IN STEP THREE FOR TIPS FROM MECHANICS



Step 3

****TIP FROM A MECHANIC****

As you start loosening, as soon as you hear the bolt pop or feel it bind, reverse direction 1/4 to 1/2 turn to clear the threads. This will make it easier as you progress.

With each body bolt loose, slide each bracket between the bolt head and the washer in their correct positions. Install the rear bracket at a slight angle and the middle bracket in straight.

Rear—Tall Bracket

Middle— Flat Bracket

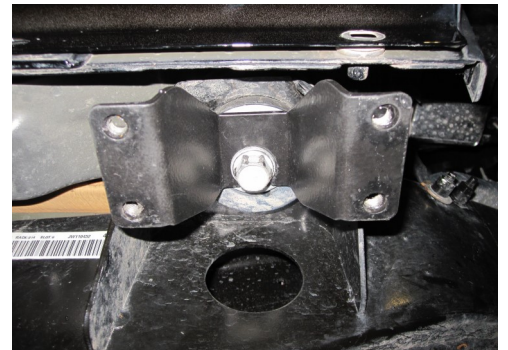
**In some cases the washer doesn't allow enough gap you will have to use a small file or Dremel tool to remove the two-three threads closest to the washer. This can be achieved by either using a file while the bolt is still in the hole or you can remove it completely.



Step 4

Install the front bracket at a 45 degree angle to the jeep, with the bracket between the head and washer, and twist straight so the bracket faces towards the side of the jeep.

Front—Short Bracket



Step 5 – Bump Strap Install

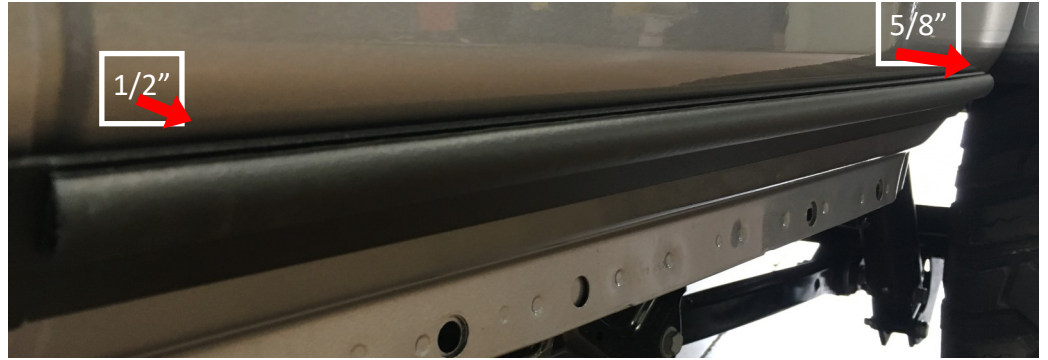
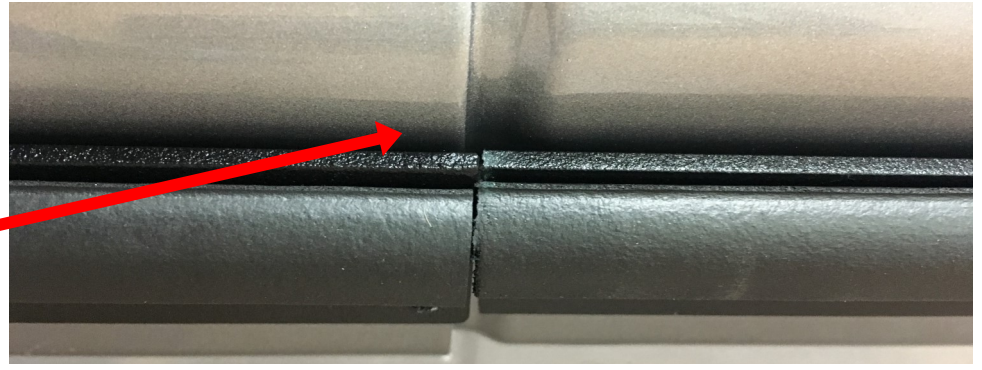
Install bump strap onto the side of the vehicle where the bend just under the door is located:

Test fit the bumper strap by lining up the strap straight across the jeep bend.

Install the front bump strap about 1/2" inch below the bend on the body from the jeep body notch to the front of the vehicle.

The rear (shorter) bump strap will be installed matching the same line over the notch, BUT when installing allow the rear portion of the bump strap to be about 5/8" off the bend to accommodate the heavier bend around the rear quarter panel.

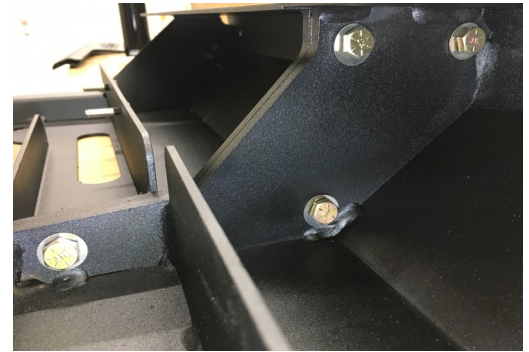
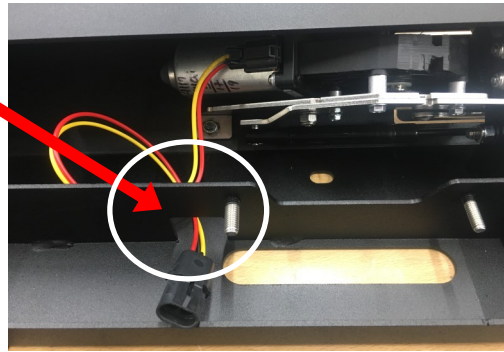
**If you've ordered the rocker guard (AX-SS-RG-JT4) the bump strap will not be installed.



Step 6 - Extension Piece Prep

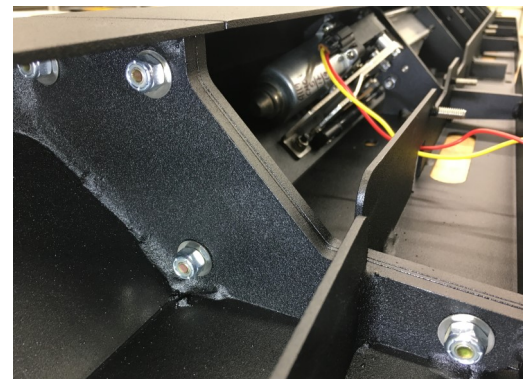
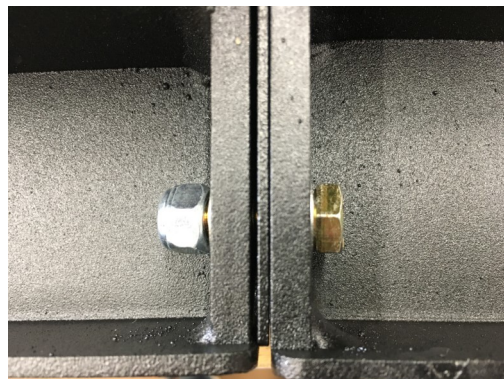
Pull the motor wire out from the hosing and slide it through the little cutout between the last bolt and step slider bracket mounting holes.

Install spacer between the extension piece and the main body.



Bolt the extension piece together to the rear of the main body using 4 5/16" bolts with washers and nuts.

Tighten the bolts down to 18 ft lbs or hand tight



We recommend assembling the rear extension piece to the body ON A FLAT SURFACE so the face of the step slider body is even on the top and front of the step slider.

There will be a very small gap between the extension piece and main body. This is normal.



Step 7

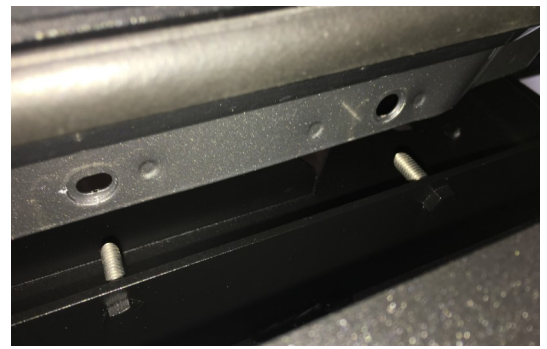
Mount step sliders on the driver side of the vehicle.

Line up the step with the pinch seam holes and slide the step studs through the pinch seam. The brackets mounted earlier should slide above the body. There should be some play in the brackets to allow up and down movement to slide above the body.

Once mounted, the step should hang on to the pinch seam by itself.

The step should line up with the gusset.

****Do NOT apply weight to the step yet as it is unsecured)**



Step 8

Start to secure Step Slider to the pinch seam using the 1/4" 20 nuts with a flat silver washer and the 5/16" nuts with a flat silver washer.

FROM FRONT TO REAR the bolts are:

1/4" - 20

5/16"

5/16"

5/16"

1/4"-20

5/16"



EXTENSION PIECE

1/4" - 20

5/16"

Install the 1/4"-20 nuts and washers.

Install the 5/16" nuts and washers

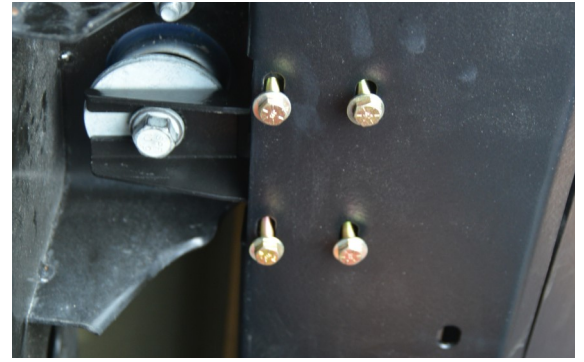
Tighten down a couple turns to where the nuts do not fall off. They will be tightened down fully in a later step.

Step 9

Install **12 5/16" - 18 x 1"** with a hex head bolts with yellow SAE washers into the bracket through the slots on the underside of the step slider.

Install bolts halfway.

**If you purchased the optional skid plate, install at this time using those same bolts. The skid plate will use those same holes and bolts.



Step 10

Once all bolts and nuts have been started, tighten down pinch seam nuts:

Use a **1/2"** socket or box end ratcheting wrench on the **5/16" - 18 nuts**.

Use a **7/16"** socket or box end ratcheting wrench on the **1/4 - 20 nuts**.

Torque 5/16" nuts to 18 ft. lbs.

Torque 1/4" nuts to 9 ft. lbs.



Step 11

Tighten down 5/16" hex hex using a **1/2"** socket and wrench.

Torque to 18 ft. lbs.

**For a quicker install, use a torx gun with an adapter for a 1/2" socket.



Step 12

Tighten down body bolts last.

Torque to 80 ft. lbs.

Repeat steps 1-11 on the passenger side



⚠ WARNING

Improper electrical installation may result in personal injury. Unless you are familiar with the installation and handling of electrical systems, have this step performed by someone who has that familiarity.

Step 13

Remove floor mats from the jeep.

Loosen driver side kick panels. The front panel will remain attached with two bolts as you will slide the wires under the panel.

Loosen seat belt rocker panel allow access for wires.



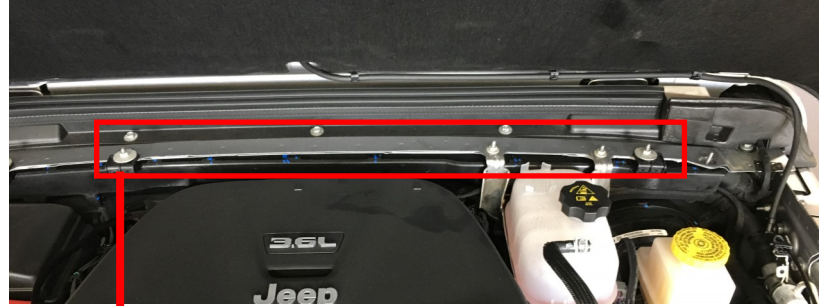
Step 14

Remove fuse from harness.

Attach RED—POSITIVE and the BLACK—NEGATIVE.

Recommended Harness Install:

Run the wiring harness BEHIND the plastic guard that is in the back of the engine bay. You will have to loosen the silver nuts to allow more movement of the plastic channel.



Use a plastic pry bar to create a slightly bigger space to run the ends of the wiring harness through.



Step 15

Pop the plug out that has two ridges on it by applying pressure from the inside.

Drill through the plug a hole large enough to run both wiring harness ends through.

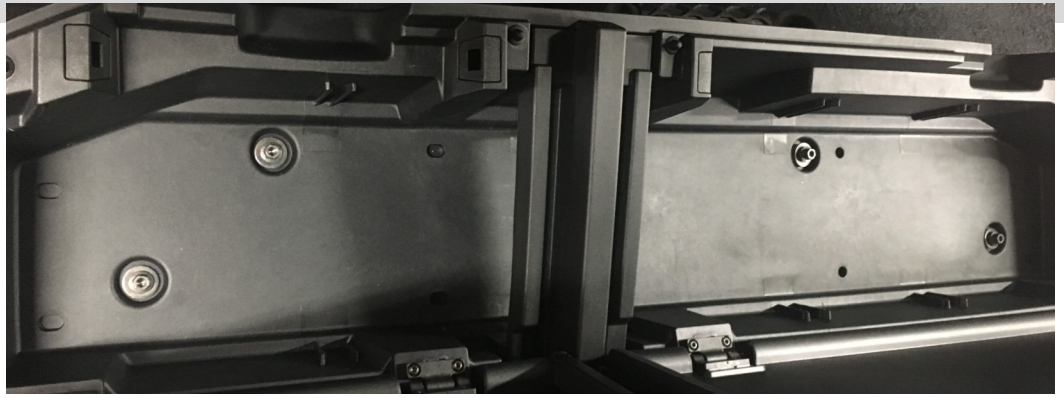
Secure wiring into place using zip ties.

****AT THE END OF THE INSTALL, FILL THE PLUG HOLE WITH SILICONE TO PREVENT LEAKING**



Step 16

REMOVE the storage box underneath the rear seats to allow wiring harness install by removing the 4 bolts under the rubber guard.



Step 17

With the box removed, pull back the carpet on the driver side rear door to access the plug.

Using a prybar or flat spatula, slowly pull the cover up to expose the plug. The tape is extremely sticky and will be pushed back into place to cover the hole once the install is done.

Remove floor plug closest to the door on the driver side. This may require you to go under the vehicle and, using a hammer and a wide piece of metal / screwdriver, hit it until it breaks the adhesive loose and comes out. Repeat on the passenger side.



Step 18

Route the wires to their appropriate locations.

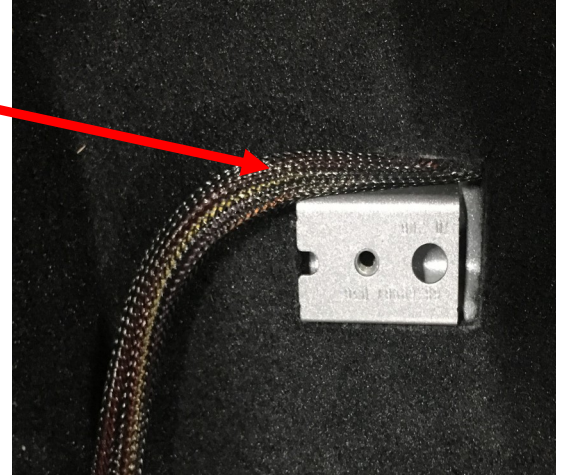
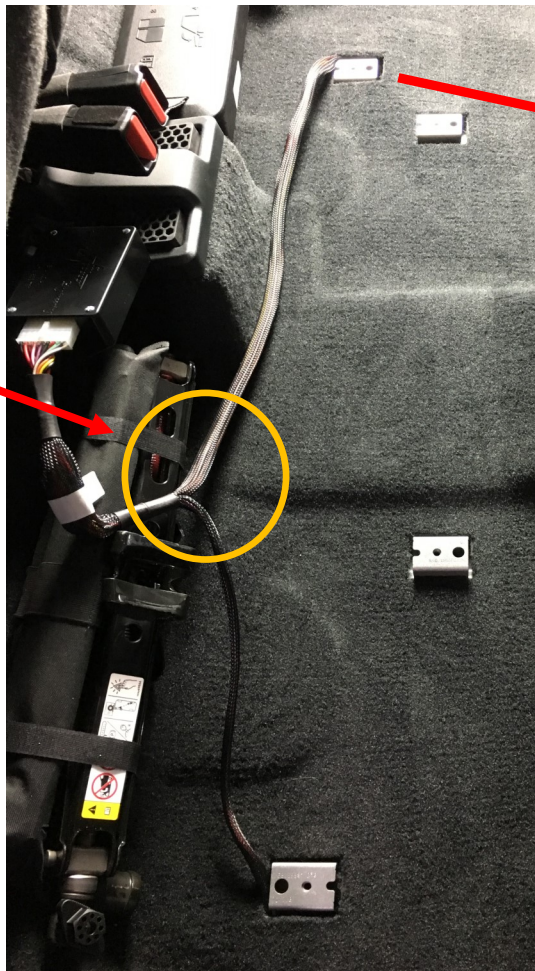
Run the power wire connectors along the driver side of the vehicle, securing it under the panels you loosened earlier towards the driver side of the vehicle.

Run the 18 pin connector under the carpet, up the first hole, across the carpet, and down the furthest hole, leaving the connector above the carpet. Keep the Y section closer to the passenger side slightly as shown in the picture.

Run the passenger side connections through the opening and down the plug on the passenger side.

****OPTIONAL: Run the full harness under the carpet and make a slit to pull the connector up through the carpet.**

****If your jeep came equipped with the normal storage area, run the wires to your discretion keeping them away from major pinch points.**



Step 19

Wiring Locations

Driver	Door sensor, rear	Purple / Orange
	Door sensor, front	Yellow / Orange
	LED light	Brown / Dark brown
	Actuator	Black / Red
Passenger	Door sensor, rear	White / Blue
	Door sensor, front	Grey / Green
	LED light	Pink / Brown
	Actuator	Black / Red

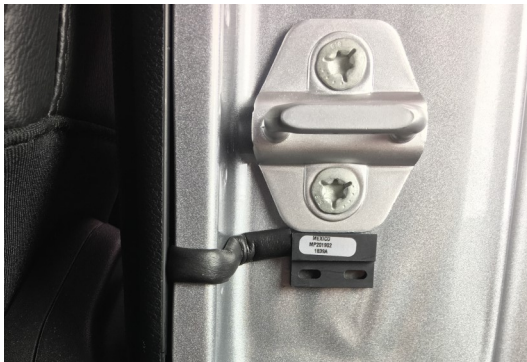
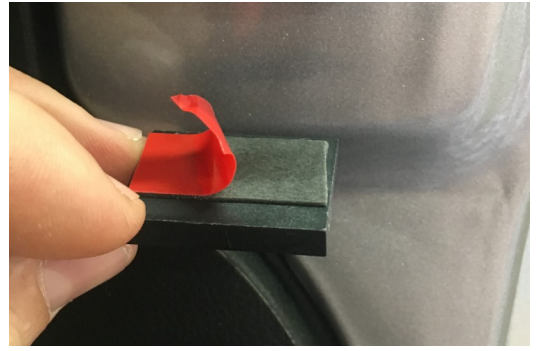
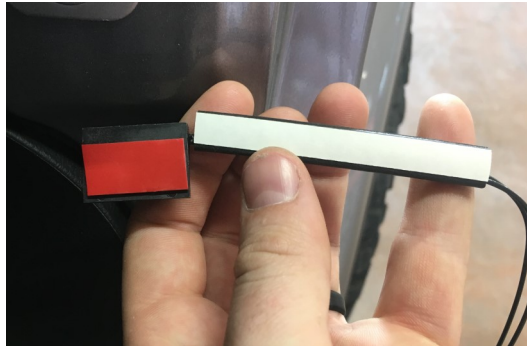
Refer to diagram below and **page 2** for sensor location and wire color.

Clean the surface below the door latch using alcohol wipes.

Remove the sticky back from the sensor and install it directly centered below the latch touching the metal latch with the top of the sensor.

Remove the sticky back from the wire cover and install by pushing the cover against the sensor and pushing a little bit against the metal at a time to ensure the rubber cover gets a good adhesive grip against the door jam.

Plug sensors into harness. Route sensor to door jam. Install on each door under the latch as shown.



Step 20

Drop the motor connectors through the plugs on both sides of the vehicle.

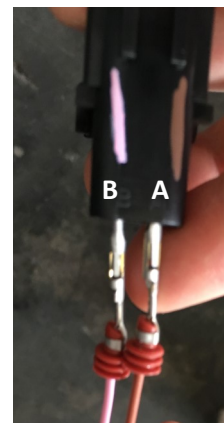
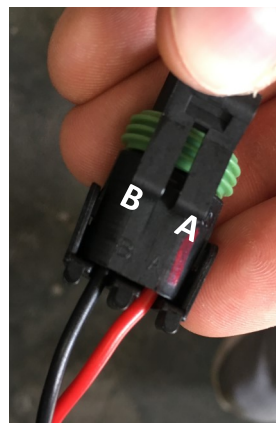
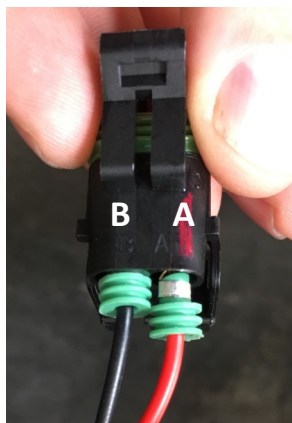
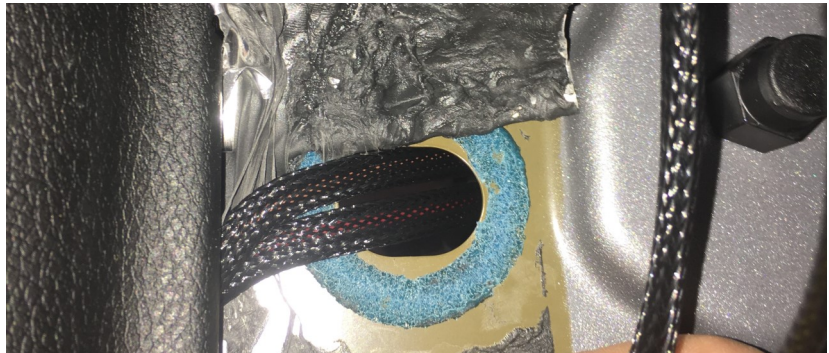
**If installing the light kit, drop the connectors through the plug also.

On the passenger side, you will have to install the pins back into the connector plugs.

For ease of install the connectors bodies will have colored lines and wires where you need to install the appropriate connector.

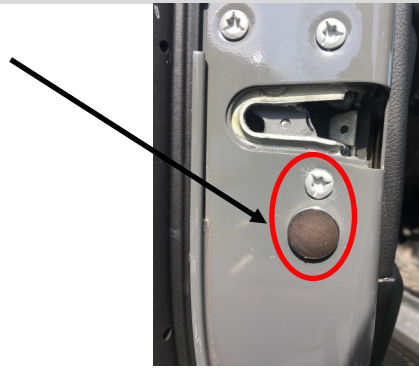
If that is missing, the connector bodies have the openings labeled with A & B. Insert the pins into the appropriate opening and push in until you hear a click, fold the back down until it clicks into place over the wires.

Once dropped through the body, plug the motor wires into the motor and secure.



Step 21

Install magnets using the adhesive back 1/4" below the bottom screw below the latch



Step 22—Install Master Switch Bracket

Remove the OBD2 port screw using an 8mm socket.

Insert screw through large hole on the master switch bracket, and then back through the OBD2 port bracket, and install back into place to hand tight.

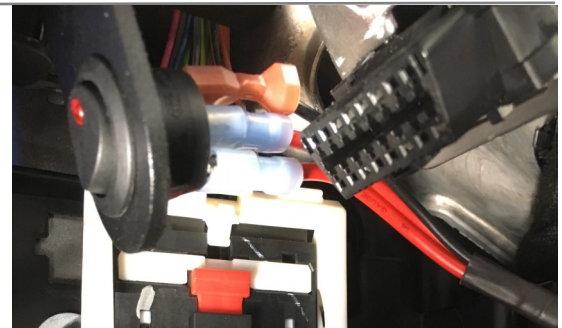
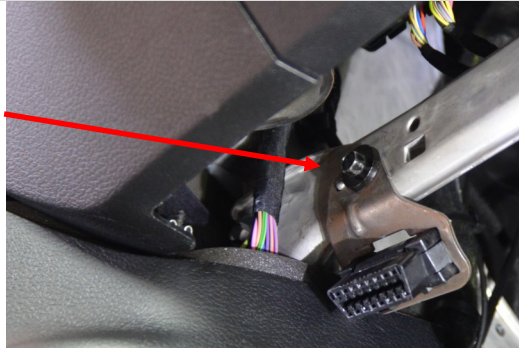
Install ground wire between the bolt and OBD2 plate.

Pull the wires through the bracket.

Plug the blue female connector into the silver male ends and the red female connector into the bronze male end.

Push the button back into the bracket

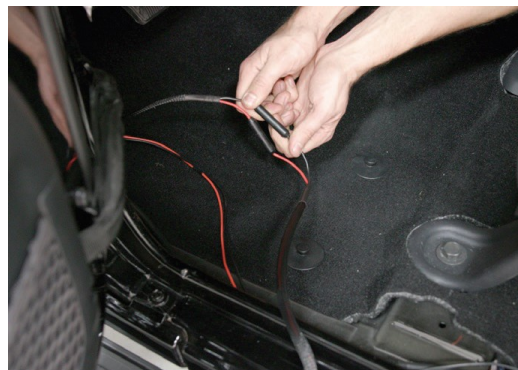
Install the ground wire to a location on the body of the jeep or right behind the bracket.



Step 23

Once all sensors are installed and the wiring has been run, plug the small wiring harness into the large harness.

Secure power wires by looping them and hiding the excess (if any) behind the front kick panel in the driver side.



Step 24—Replacing all parts removed in prior steps

Replace the sticky tape removed earlier.

Run the wires towards the kick panels before re-applying tape to ensure wires are safe.

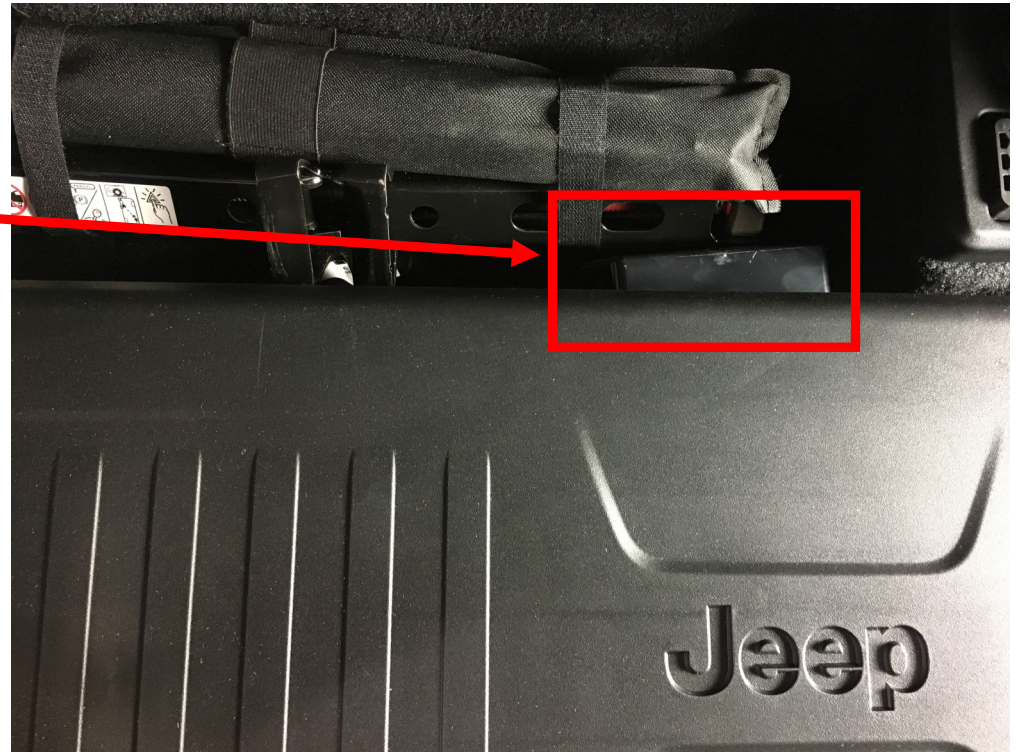


Step 25

Once all wiring is done and secured, lay the carpet back down.

Install the rear cargo box back into place.

The wiring harness should run behind this box along with the circuit board box. This should be installed vertically behind the jeep box.



Step 26

Replace kick panels and ensure wires are run behind / secured in the panels.



Step 27

Replace the two 10 mm head bolts that you removed in the first steps.





TROUBLESHOOTING YOUR STEP SLIDERS:

<p>I just installed my steps and they are not coming down when I open the door.</p>	<p>Double check the connections. Check the fuse to make sure it is plugged in. Is the on / off switch getting power? Is the circuit board plugged in? Are the door sensors plugged in?</p>
<p>My switch is getting power, but the light stays on in both positions.</p>	<p>The light is only supposed to be on when the system is turned on. If it is lit in both positions simply switch the red wires on the back. Will this kill my battery with the light constantly lit? This will not kill your battery unless you leave it lit for a month with no use.</p>
<p>Everything is plugged in and the switch is turning on and off, but the steps still won't deploy.</p>	<p>Two things may be causing this issue:</p> <p>Check the motor first. Simply unplug it from the wiring harness and apply external 12V power to the leads. One position will make them deploy. Switch the leads again to make them retract. If this works, plug the motor back into the harness. We test each and every motor that leaves our factory by hand along with assembling your step slider by hand. These may fail, but it is extremely rare after we send them after having tested them. If you test the motor and all you hear is a clicking sound but nothing happens, there is likely internal damage.</p> <p>Check the sensors. Unplug both of them from the wiring harness, and plug one back in. Manually test your sensors by putting a magnet really close (but not touching) to the sensor. Does it make the step retract? When the magnet is away, the step should deploy. If the steps deploy right after installation, more than likely your magnets just need to be aligned. Do this one by one with each sensor by the method above. Install one sensor, test, align the magnet on the door, test, and then mark the position of the magnet so if for some reason they do move out of place you can easily realign them. The sensors should have a label with MP###802 or MP###902.</p>
<p>I tested the motor, and it works. I checked the sensors individually, and the system still won't work. The steps don't deploy unless I do it manually with 12V power.</p>	<p>In rare circumstances, the circuit board that runs the system may be faulty.</p> <p>Call our support team for a warranty help at 435-752-4580</p>
<p>I opened my door a bunch of times and the system just shut off. What happened?</p>	<p>Our systems have built-in protection against quick cycling like this to prevent damage. Simply turn your on / off switch to off, wait 5 seconds, and then turn it on again. This will reset the system and allow it to work normally again.</p>
<p>Everything is working now. But I want to take my doors off and have the steps still work.</p>	<p>We sell a door delete kit you can replace those sensors with. Part# SL-DD-100 comes with everything you need for two doors. If you want to install a delete kit on the rear doors as well, you will need to purchase two kits.</p>
<p>The steps deployed and won't retract. What is going on?</p>	<p>Chances are your magnets are misaligned. To diagnose which door needs to be adjusted, unplug the rear sensors with the front doors closed. If your steps come up, then it was the rear doors that need to be aligned with your magnet. If the step stays down, the front door needs to be aligned. Open your door, shift the magnet in a direction, and shut it again. Repeat until the step comes up when the door is shut. Mark the magnet placement on the front door. Plug the rear door sensor in, shut the rear door and front door, and see if it comes up. If not, the rear door is misaligned (Since we just aligned the front door we know it's the rear door now). Repeat the previous process of opening your door, shifting your magnet, and shutting your door until the step comes up. It may take a few tries.</p>
<p>I was off-roading, left my system on, someone left the door ajar and I ripped my step off on a rock. What now?</p>	<p>We can replace these parts for you at cost. You will have to remove the step off your vehicle to replace the innards. Call us and we'll figure out what you need exactly! If you prefer us to do the repair we will do that for you! You will have to cover shipping to us and the cost of the parts, but we will ship it back to you (from our warehouse to your house) on our account.</p>

PRODUCT INFORMATION:

LIMITED LIFETIME WARRANTY FOR STRUCTURAL AND MECHANICAL COMPONENTS

LIMITED TWELVE (12) MONTH WARRANTY FOR FINISH AND ELECTRICAL COMPONENTS

Rock-Slide Engineering, LLC (“R-SE”) warrants to the original purchaser that (a) the structural and mechanical components of the Step Sliders will be free of defects in material and workmanship for the lifetime of the Step Sliders (the “product”), and (b) the finish (powder coat) and the electrical components (including the motor) will be free of defects in material and workmanship for a period of twelve (12) months from the original date of purchase. This warranty applies only to the original retail purchaser. Warranty is void if product was not purchased directly from R- SE or from an authorized R-SE retailer or reseller. This warranty applies only with regard to the original installation of the product to the original vehicle. This warranty does not cover removal or reinstallation of the product.

To exercise this warranty and receive any warranty service, the original purchaser must provide R-SE with proof of purchase and date of purchase that is acceptable to R-SE, such as a copy of the original purchaser’s purchase receipt. The original purchaser must return the defective product to R-SE along with a description of the problem, a copy of the original purchase receipt, the original bill of sale and all contact information (name, address, telephone number and email address). To begin the warranty process, the original purchaser must email R-SE’s warranty department.

During this warranty term, and upon the original purchaser’s valid exercise of this warranty, R-SE shall, at its option, repair or furnish a replacement product in the event the original product is deemed by R-SE to be defective. R-SE’s sole liability shall be for repairing or replacing the product, but R-SE may refund the purchase price at its sole discretion and option. The original purchaser is responsible for prepayment of all shipping and/or transportation charges with respect to the exercise of this warranty. The product may change without notice. In the event of a product change, R-SE has no obligation to upgrade or modify any older generation product.

THE WARRANTY SET FORTH HEREIN IS THE ONLY WARRANTY COVERING THE PRODUCT. NO OTHER WARRANTY EXISTS, EXPRESS OR IMPLIED, INCLUDING, WITHOUT LIMITATION, IMPLIED WARRANTIES OF MERCHANTABILITY AND/OR FITNESS FOR A PARTICULAR PURPOSE. No retailer, reseller, dealer, agent or employee is authorized to make any modifications, extensions, amendments or additions to this warranty.

This warranty shall be void in its entirety if R-SE determines that the product installation was modified, changed, altered, customized or in any way used other than as instructed. Installation of the product without strictly adhering to the installation instructions shall void this warranty. Installation must be on the proper vehicle or warranty is void.

R-SE SHALL NOT BE LIABLE FOR SPECIAL, INDIRECT, INCIDENTAL OR CONSEQUENTIAL DAMAGES, UNDER ANY LEGAL THEORY AND/OR UNDER ANY CIRCUMSTANCE WHATSOEVER. IN ANY EVENT, ANY DAMAGES IN ANY SITUATION SHALL BE LIQUIDATED DAMAGES AND MAY NOT EXCEED THE RETAIL PRICE OF THE PRODUCT. R-SE SHALL NOT BE LIABLE FOR ANY LOSS, DAMAGE OR INJURY DIRECTLY OR INDIRECTLY ARISING FROM THE USE OF OR INABILITY TO DETERMINE THE USE OF THE PRODUCT. THE ORIGINAL PURCHASER IS RESPONSIBLE TO DETERMINE THE SUITABILITY OF THE PRODUCT FOR ITS INTENDED USE, PRIOR TO USING THE PRODUCT, AND THE ORIGINAL PURCHASER ASSUMES ALL RESPONSIBILITY AND RISK IN CONNECTION THEREWITH.

PATENT INFORMATION:

This product is covered by multiple US issued patents.

PAT US 9,771,024 B2

PAT US 8,833,781B2

PAT US D718,1955

Have feedback, thoughts, or suggestions?

Please email us!

We would be happy to make our instructions easier to read and value your feedback.

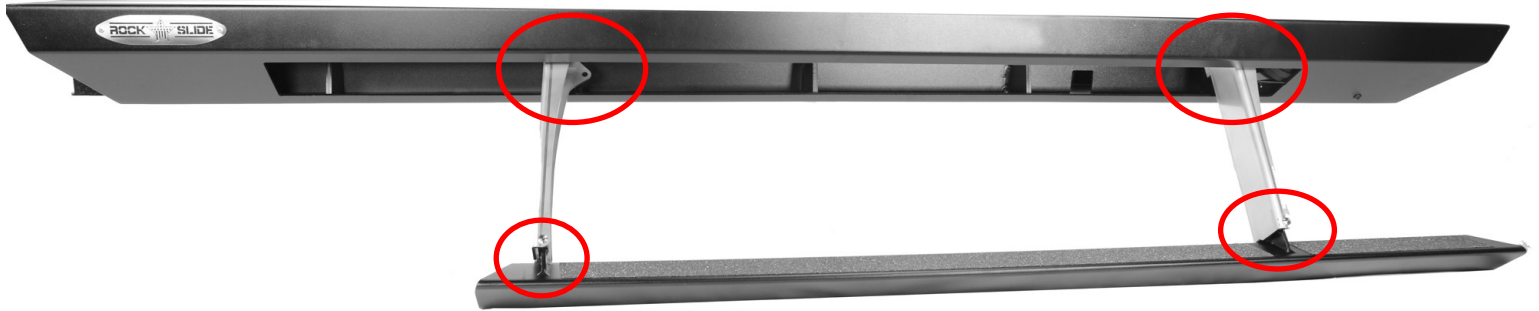
WARRANTY@ROCKSLIDEENGINEERING.COM



MADE IN THE USA

GENERAL MAINTENANCE MANUAL

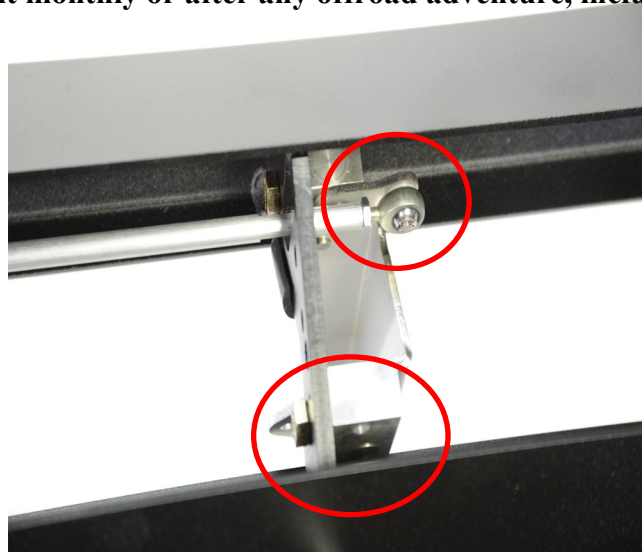
To ensure your step sliders function properly, some maintenance is required!



You will need to lubricate the pivot points that are circled in red shown above.

Lubricate the heim joints and aluminum blocks as shown below.

We recommend you do it monthly or after any offroad adventure, including during winter months.



Deploy the steps, pressure wash the bodies clean including internals, then apply a multipurpose lubricant to each of the areas as shown.



Here are several options on lubrication that are carried at the local auto stores in most areas