



MADE IN THE USA

INSTALLATION MANUAL

FENDER FLARES COMBO

AC-FF-101-F-JLA / AC-FF-102-F-JLA

Description	Quantity
Driver side style brackets	7
Passenger side style brackets	7
Anti-seize packet	1
1/4" - 20 nylock nut	2
1/4" - 20 stainless steel washer	2
1/4" - 20 X 5/8" flanged bolt	58
1/4" aluminum nutsert	28

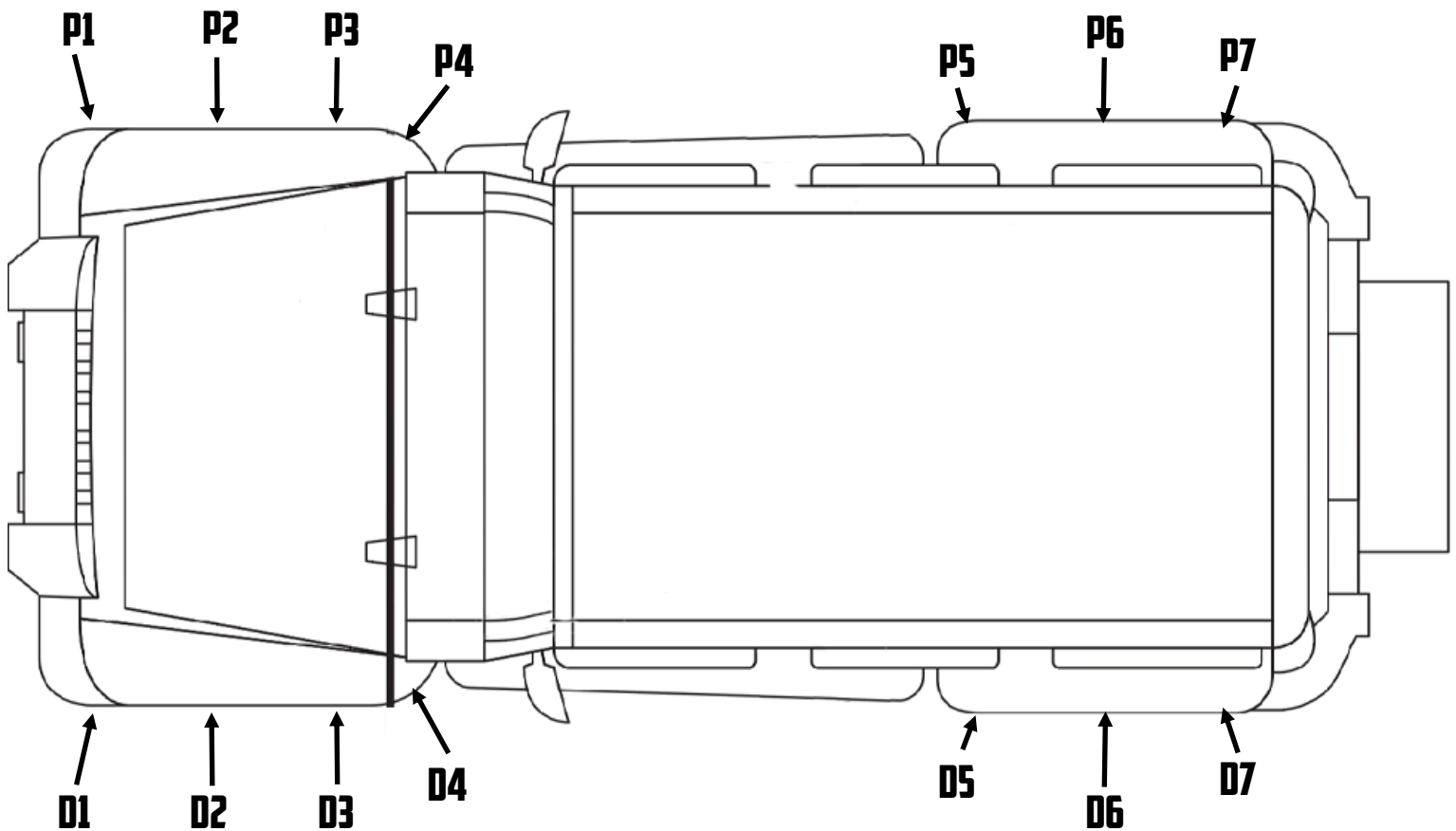
Tools Required	
10 mm socket	7/16" socket
	1/2" socket
**Optional for quicker install	
Torx Gun with adapters	Heavy Duty Torx Gun with 1/4" or 3/8" driver

Brackets





BRACKET INSTALL LOCATIONS



Notes and Maintenance

Before you begin installation, read all instructions thoroughly.

Proper tools will improve the quality of installation and reduce the time required.

Step 1

Remove factory fenders. You will not re-use anything from the factory fenders except the inner fender flares.

Step 2

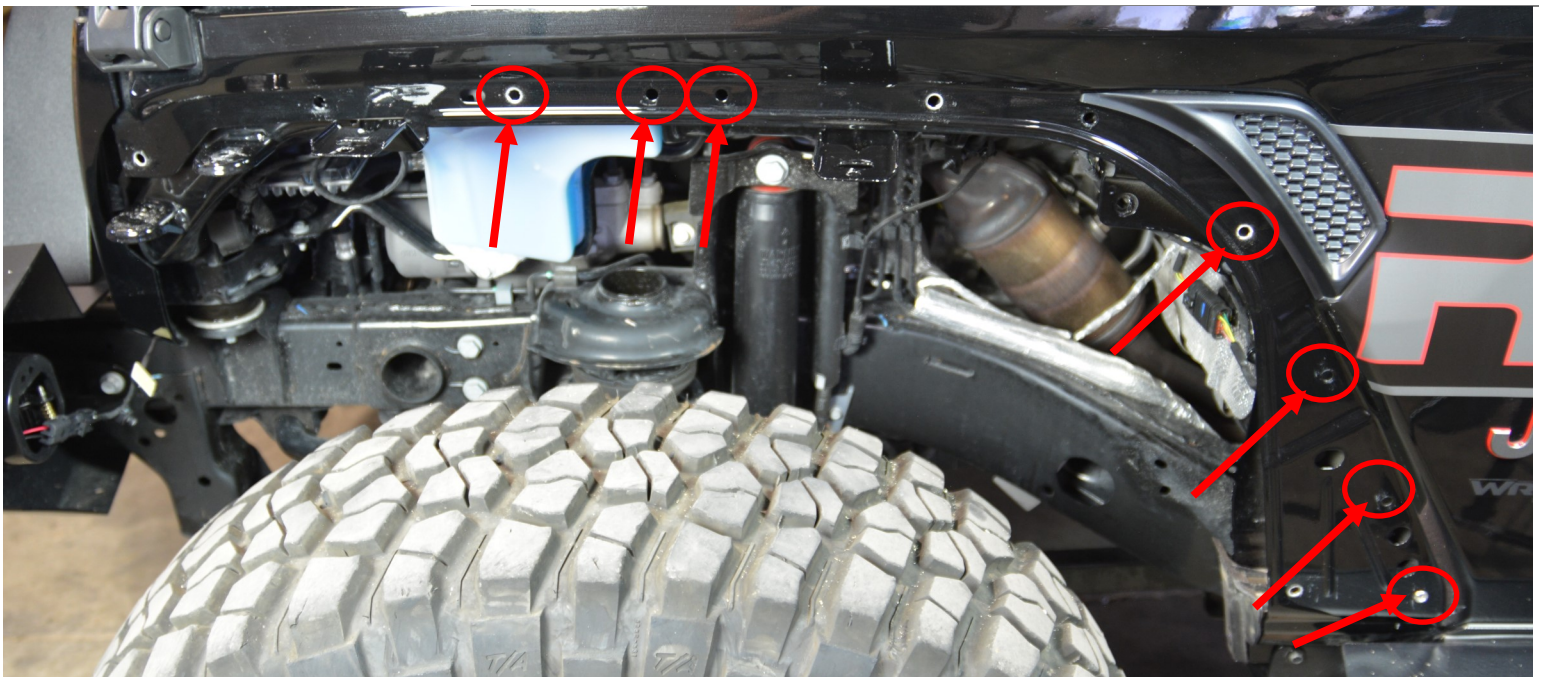
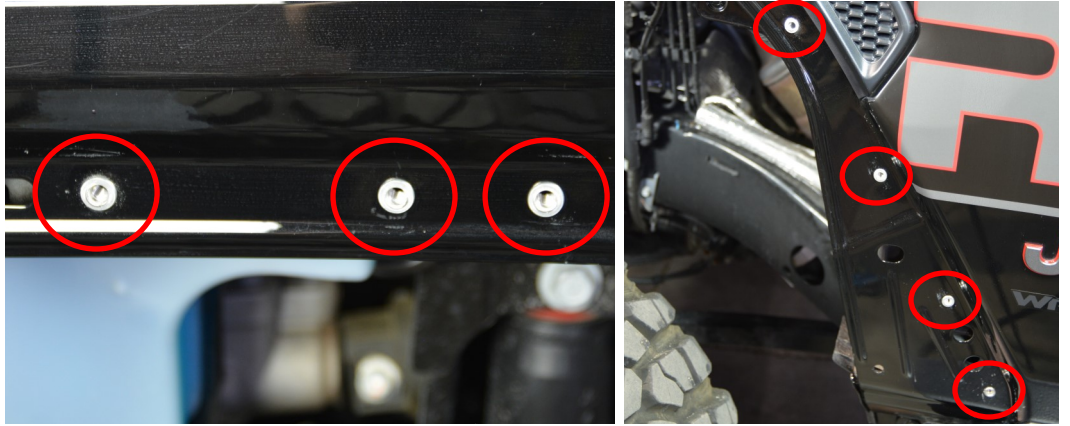
Start on the driver side, front fender.

Install 1/4" - 20 aluminum nutserts into the factory holes in the locations shown using a nutsert tool: seven total.

Between the two factory brackets, install into the three factory holes.

Below the vent, install into four of the factory holes as shown.

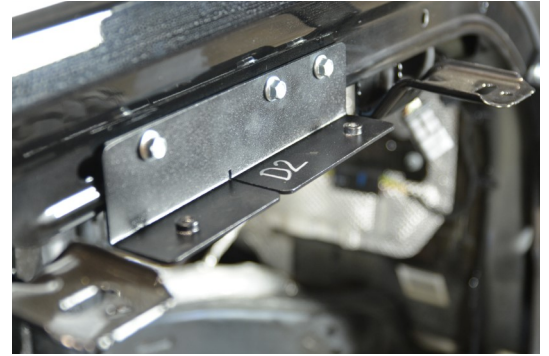
- Below- Shown without nutserts



Step 3

With all the nutserts installed on the driver side front panel of the vehicle, start with bracket **D1** and mount it at the front of the vehicle as shown using **two** flanged 1/4" - 20 bolts through the front brackets. Install loosely.

Install bracket **D2** between the two center factory mounts as shown using **three** flanged 1/4" - 20 bolts. Tighten down bolts.



Step 4

Following the sequence of brackets, install **D3 & D4** onto the rear portion of the driver side front panel.

D3 bracket will be installed close to the vent using **two** 1/4" - 20 bolts. Tighten down.

D4 bracket will be installed on the lower portion of the fender well. Use **two** 1/4" - 20 bolts. Tighten down.

Torque 1/4" bolts to 9 ft. lbs or 76 in. lbs.



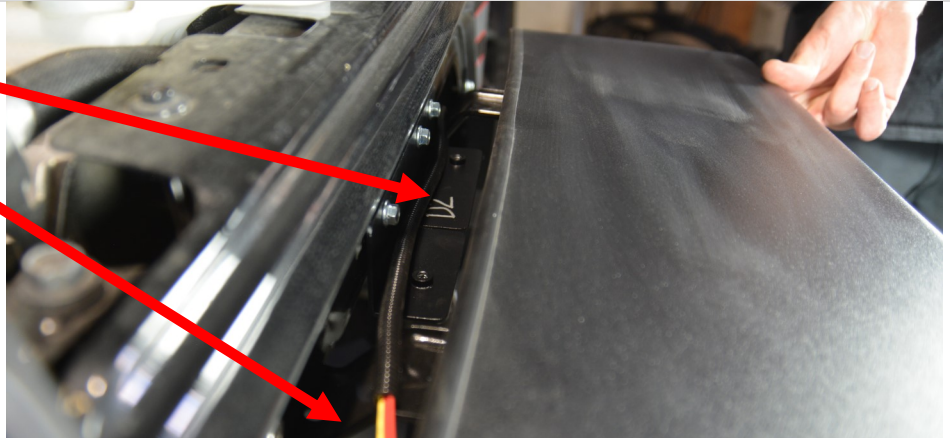
Step 5

With the brackets installed, trim the inner fender flare to fit back into the wheel well.

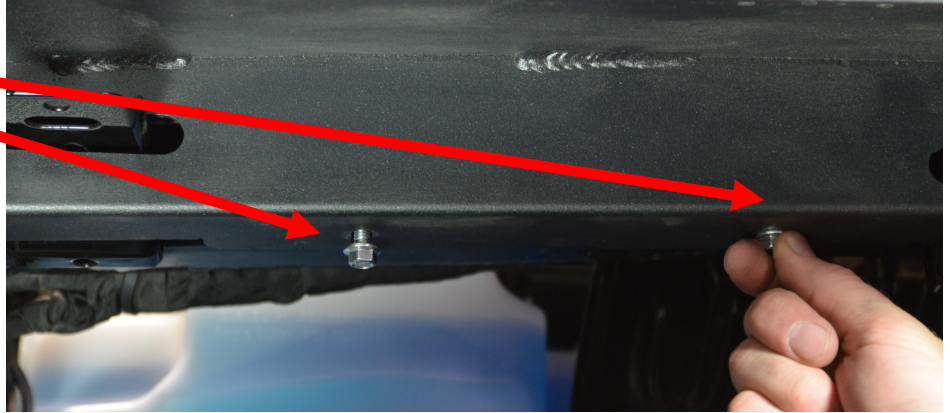
This step may require additional customization and trimming depending on shocks, wheels, and other factors.

Step 6

Install the fender flare onto the brackets. Route the wiring harness up above the factory brackets towards the rear of the jeep.

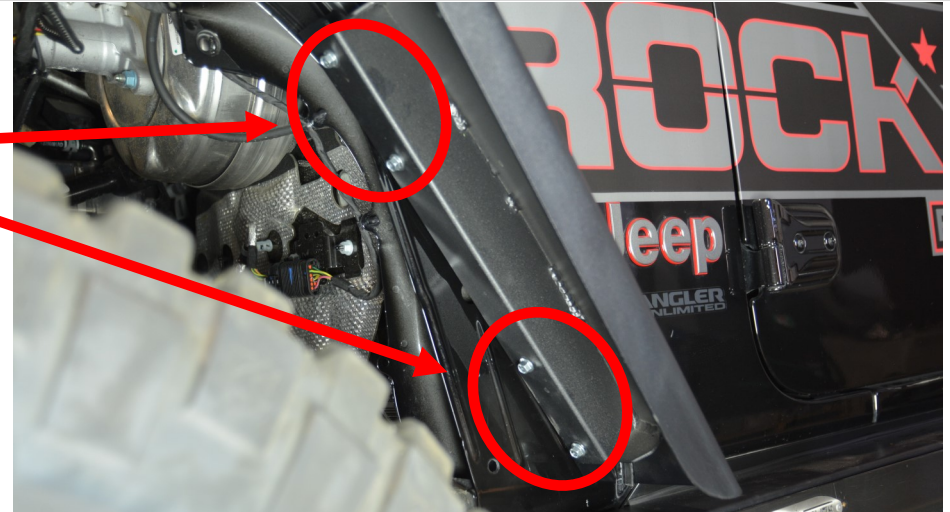


Install 1/4" - 20 flanged bolts into D2, brackets loosely into that were previously mounted. This will hold the fender onto the jeep.



Step 7

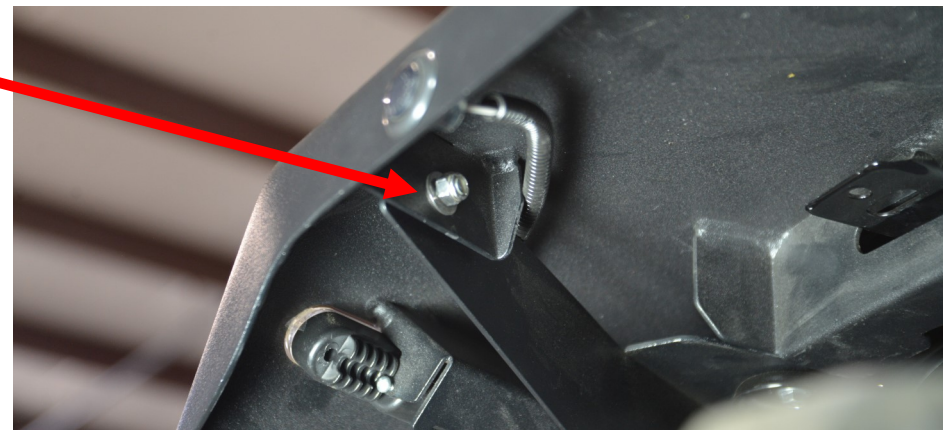
Install 1/4" - 20 flanged bolts loosely into the D3 and D4 brackets locations.



Step 8

Install 1/4" - 20 nut and bolt into the D1 bracket to hold the bracket to the fender flare. Install loosely.

Double check to ensure all bolts and been installed into the brackets and everything is loose.



Step 11

****You may need a 2nd person for this step****

Pinch the bracket and the fender flare together under the fender flare. This will close the gap..

Tighten down the 1/4" - 20 bolts on the bracket to hold the gap while you are applying pressure.

Repeat the process on each bracket location until the gap is closed and the weather stripping is touching the body.

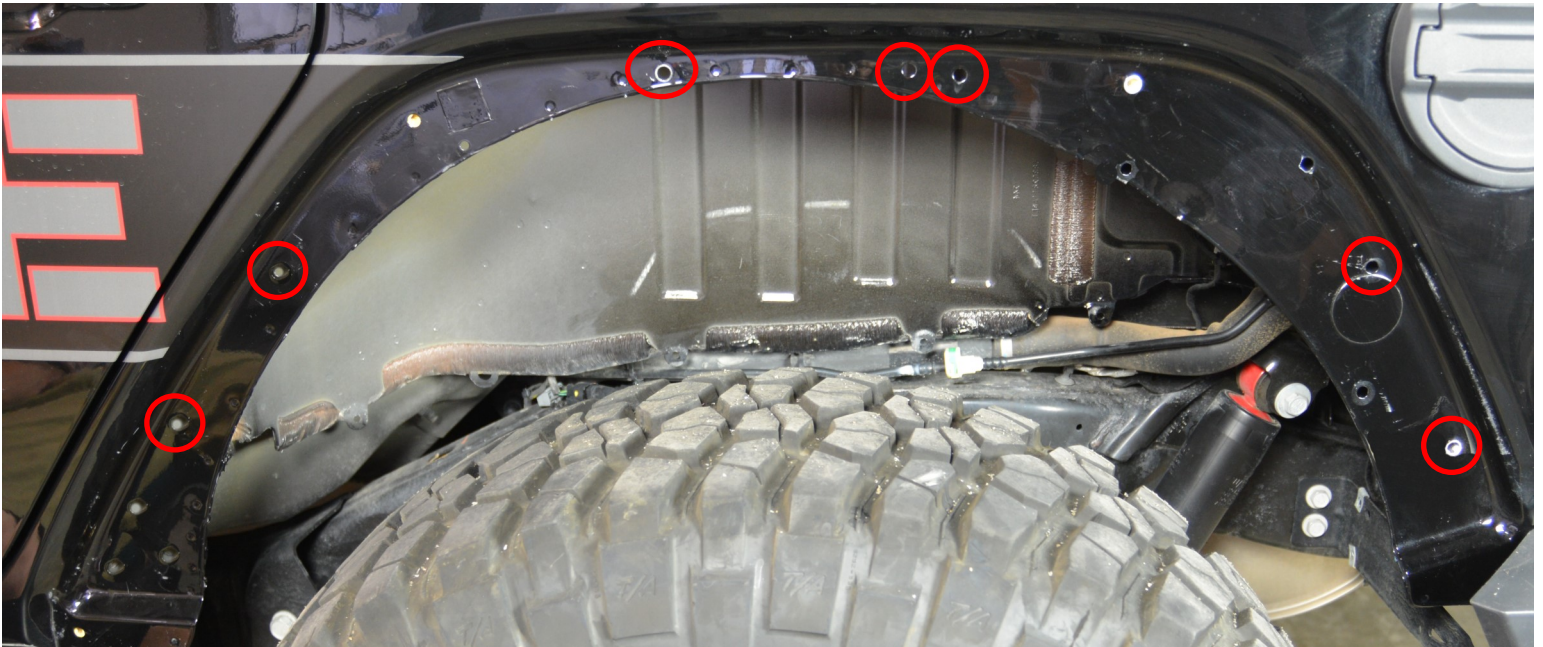
Tighten down the two 1/4" - 20 bolts on the D1 bracket before tightening the 1/4" nylock nut.

Plug harness back into the factory plug.



Step 12—Rear Fenders

Install 1/4" - 20 nutserts into the rear driver side panel as shown: you will use **seven** total.



Step 13

Install the rear brackets as shown:
D5 will be installed towards the front
on the lower portion of the fender well
using **two** 1/4" - 20 flanged bolts..

D6 will be installed on the top of the
fender well using **three** 1/4" - 20
flanged bolts.



D7 will be installed at the rear of the
fender well on the lower portion using
two 1/4" - 20 flanged bolts.



Step 15

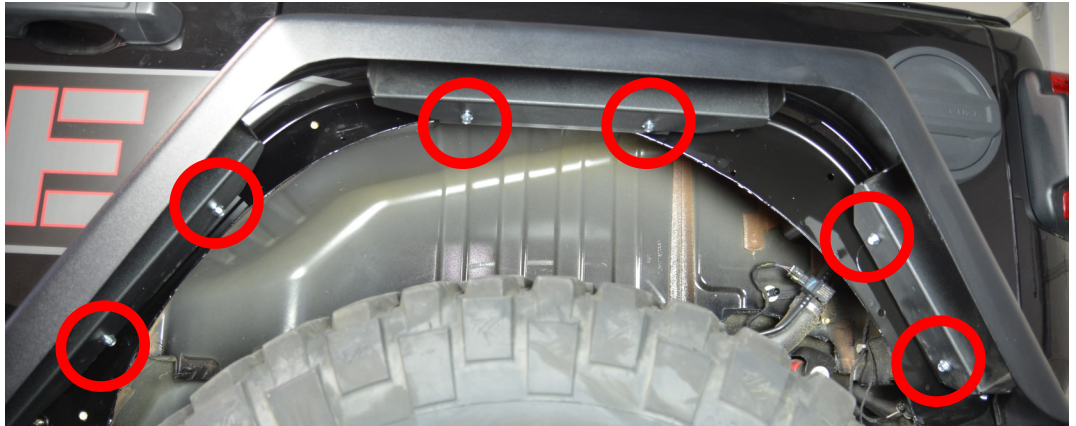
Install rear fenders onto the brackets by sliding them towards the jeep and up.

The fenders do not sit on the brackets, but go underneath them.



Step 16

Use **two** 1/4" - 20 flanged bolts for each bracket (6 total) to hold the fender in place. Do not tighten down, but leave them slightly loose



Step 17

Using the same technique as on the front fenders, apply lateral pressure towards the jeep on the fender flare to close the gap.

Tighten the 1/4" - 20 bolts down while applying pressure to eliminate the gap between body and fender flare.

Repeat on the Passenger Side



PRODUCT INFORMATION:

LIMITED LIFETIME WARRANTY FOR STRUCTURAL AND MECHANICAL COMPONENTS

LIMITED TWELVE (12) MONTH WARRANTY FOR FINISH AND ELECTRICAL COMPONENTS

Rock-Slide Engineering, LLC (“R-SE”) warrants to the original purchaser that (a) the structural and mechanical components of the Step Sliders will be free of defects in material and workmanship for the lifetime of the Step Sliders (the “product”), and (b) the finish (powder coat) and the electrical components (including the motor) will be free of defects in material and workmanship for a period of twelve (12) months from the original date of purchase. This warranty applies only to the original retail purchaser. Warranty is void if product was not purchased directly from R- SE or from an authorized R-SE retailer or reseller. This warranty applies only with regard to the original installation of the product to the original vehicle. This warranty does not cover removal or reinstallation of the product.

To exercise this warranty and receive any warranty service, the original purchaser must provide R-SE with proof of purchase and date of purchase that is acceptable to R-SE, such as a copy of the original purchaser’s purchase receipt. The original purchaser must return the defective product to R-SE along with a description of the problem, a copy of the original purchase receipt, the original bill of sale and all contact information (name, address, telephone number and email address). To begin the warranty process, the original purchaser must email R-SE’s warranty department.

During this warranty term, and upon the original purchaser’s valid exercise of this warranty, R-SE shall, at its option, repair or furnish a replacement product in the event the original product is deemed by R-SE to be defective. R-SE’s sole liability shall be for repairing or replacing the product, but R-SE may refund the purchase price at its sole discretion and option. The original purchaser is responsible for prepayment of all shipping and/or transportation charges with respect to the exercise of this warranty. The product may change without notice. In the event of a product change, R-SE has no obligation to upgrade or modify any older generation product.

THE WARRANTY SET FORTH HEREIN IS THE ONLY WARRANTY COVERING THE PRODUCT. NO OTHER WARRANTY EXISTS, EXPRESS OR IMPLIED, INCLUDING, WITHOUT LIMITATION, IMPLIED WARRANTIES OF MERCHANTABILITY AND/OR FITNESS FOR A PARTICULAR PURPOSE. No retailer, reseller, dealer, agent or employee is authorized to make any modifications, extensions, amendments or additions to this warranty.

This warranty shall be void in its entirety if R-SE determines that the product installation was modified, changed, altered, customized or in any way used other than as instructed. Installation of the product without strictly adhering to the installation instructions shall void this warranty. Installation must be on the proper vehicle or warranty is void.

R-SE SHALL NOT BE LIABLE FOR SPECIAL, INDIRECT, INCIDENTAL OR CONSEQUENTIAL DAMAGES, UNDER ANY LEGAL THEORY AND/OR UNDER ANY CIRCUMSTANCE WHATSOEVER. IN ANY EVENT, ANY DAMAGES IN ANY SITUATION SHALL BE LIQUIDATED DAMAGES AND MAY NOT EXCEED THE RETAIL PRICE OF THE PRODUCT. R-SE SHALL NOT BE LIABLE FOR ANY LOSS, DAMAGE OR INJURY DIRECTLY OR INDIRECTLY ARISING FROM THE USE OF OR INABILITY TO DETERMINE THE USE OF THE PRODUCT. THE ORIGINAL PURCHASER IS RESPONSIBLE TO DETERMINE THE SUITABILITY OF THE PRODUCT FOR ITS INTENDED USE, PRIOR TO USING THE PRODUCT, AND THE ORIGINAL PURCHASER ASSUMES ALL RESPONSIBILITY AND RISK IN CONNECTION THEREWITH.

PATENT INFORMATION:

This product is covered by multiple US issued patents.

PAT US 9,771,024B2

PAT US 8,833,781B2

PAT US D718,1955

Have feedback, thoughts, or suggestions?

Please email us!

We would be happy to make our instructions easier to read and value your feedback.

WARRANTY@ROCKSLIDEENGINEERING.COM