



2622 Jeep Wrangler JL 2018 - Present
2622 Jeep Gladiator 2020 - Present

Installation Time



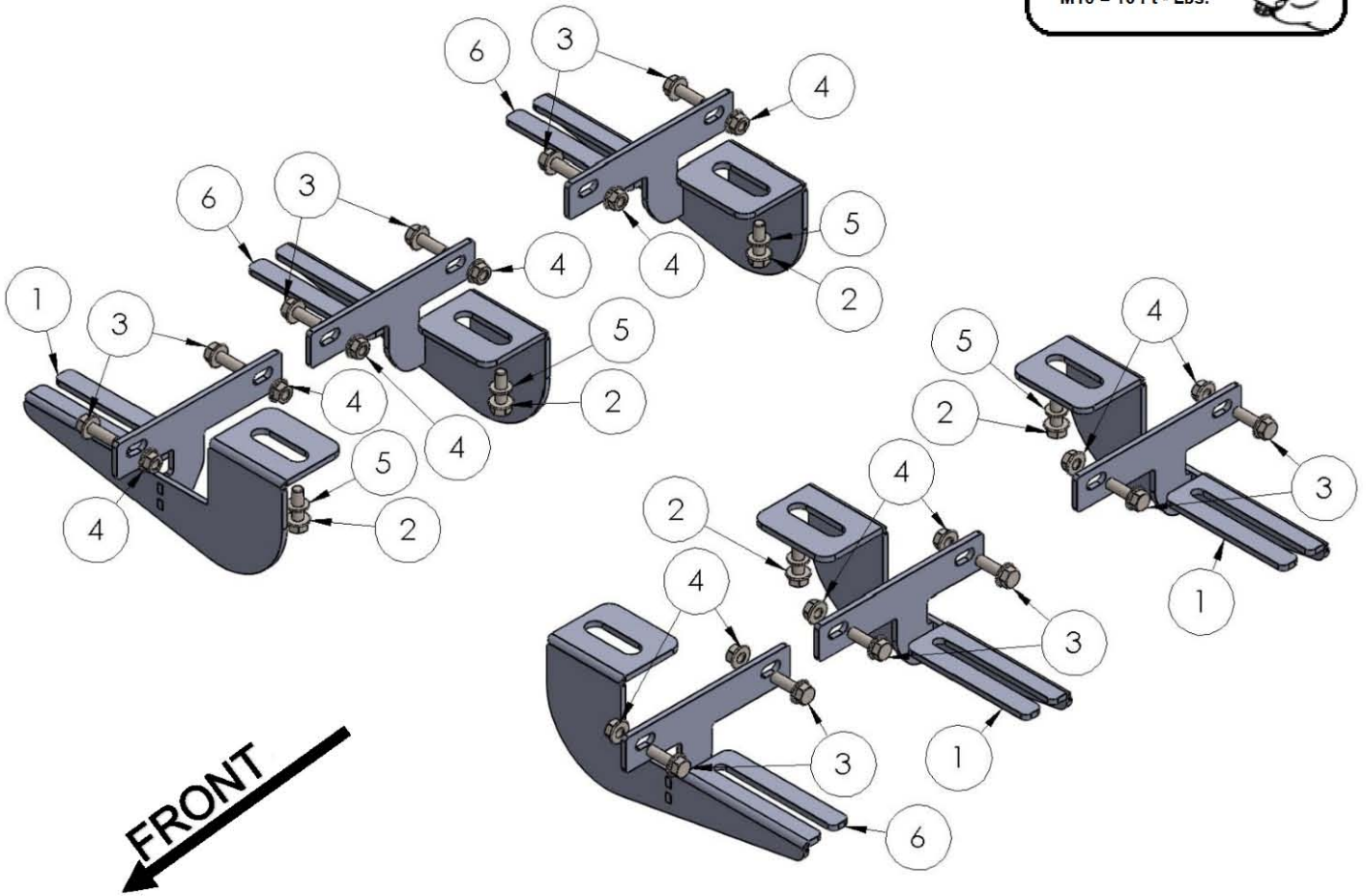
60 Minutes

Torque Specifications

M6 = 3 ft - Lbs.

M8 = 7 Ft - Lbs.

M10 = 16 Ft - Lbs.



| ITEM | PART NAME | QTY |
|------|---------------------------------------|-----|
| 1 | 2622850FCB0 | 3 |
| 2 | DIN 6921 FLANGE BOLT - M8 x 25 SILVER | 6 |
| 3 | DIN 6921 FLANGE BOLT - M8 x 25 BLACK | 12 |
| 4 | DIN 6923 FLANGE NUT - M8 | 12 |
| 5 | DIN 125 WASHER - M8 | 6 |
| 6 | 2622850FCB0 | 3 |

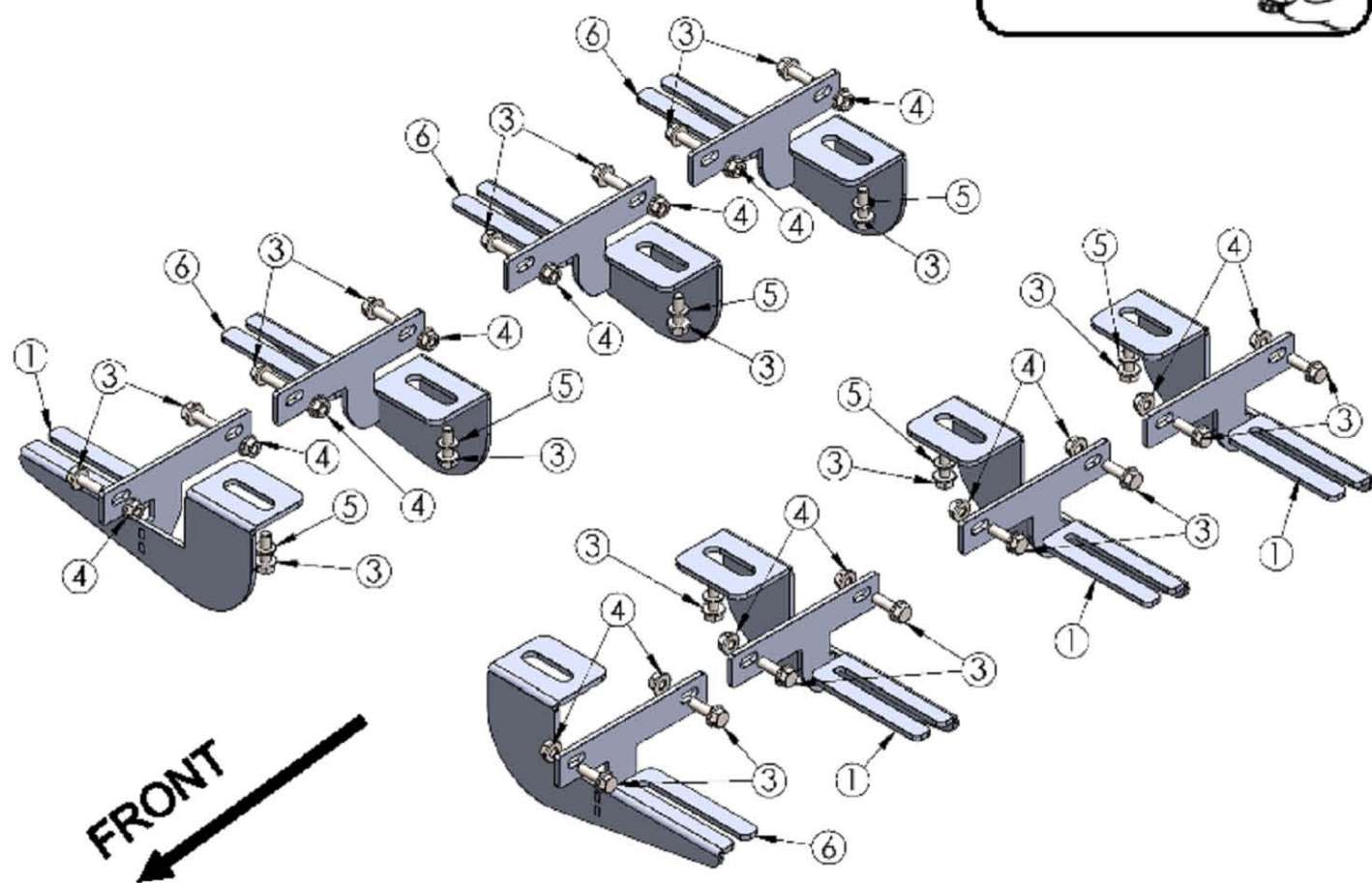
2622 Jeep Gladiator 2020 - Present

Torque Specifications

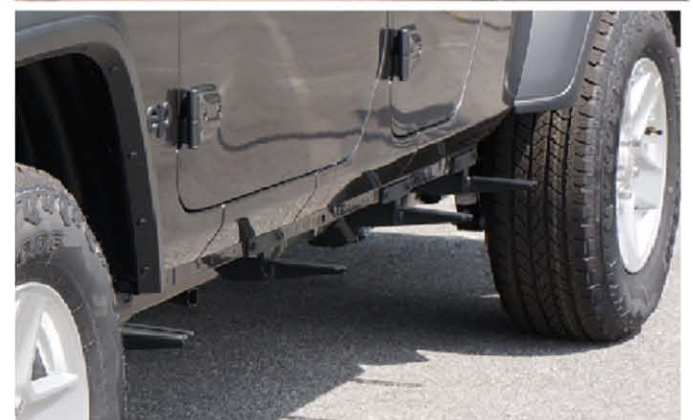
M6 = 3 ft - Lbs.

M8 = 7 Ft - Lbs.

M10 = 16 Ft - Lbs.



| ITEM | PART NAME | QTY |
|------|--------------------------------------|-----|
| 1 | 2622850FCB0 | 4 |
| 3 | DIN 6921 - M8 X 25 X 25-N | 8 |
| 3 | DIN 6921 FLANGE BOLT - M8 x 25 BLACK | 16 |
| 4 | DIN 6923 FLANGE NUT - M8 | 16 |
| 5 | DIN 125 WASHER - M8 | 8 |
| 6 | 2622850FCB0 | 4 |



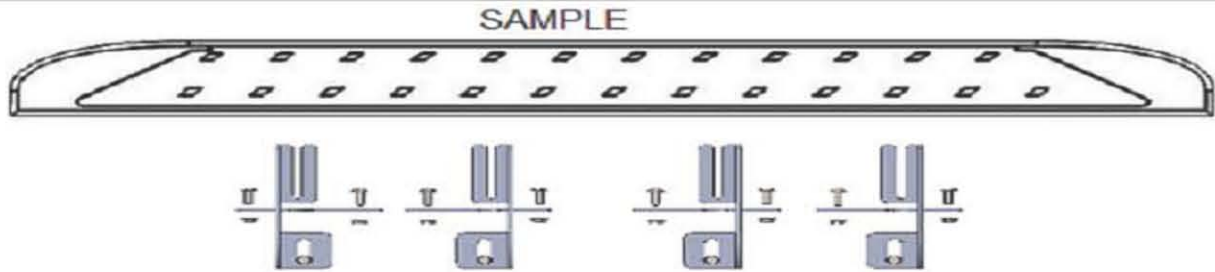
**NOTE: Wrangler JL uses 3 brackets
Gladiator JT uses 4 brackets**

- 1) Locate all mounting points of your vehicle, Wrangler JL has 3 mounting points Gladiator JT has 4 mounting points. Please refer to pages 2 and 3 for your specific vehicle.
- 2) Install brackets using supplied M8 hardware as shown on images #3 and #4 do not tighten
- 3) Repeat procedure 3x for Wrangler JL and 4x for Gladiator JT
- 4) Loosen M8 hardware on back of the running boards
- 5) Install running boards onto brackets adjusting as necessary
- 6) Proceed to tighten brackets M8 hardware to 7 ft lbs. Start with 1st bracket followed by last bracket and followed by 2nd bracket. For Gladiator JT continue to bracket #3
- 7) Proceed to next page for running board torque specs
- 8) Repeat procedure on opposite side

For Technical Support please call 1-866-71-ROMIK

Do not use power tools as this may damage your products and void your warranty

Running Board Torque Specs



RAL / RB2 / RZR / REC / RCV



ROF / ROB

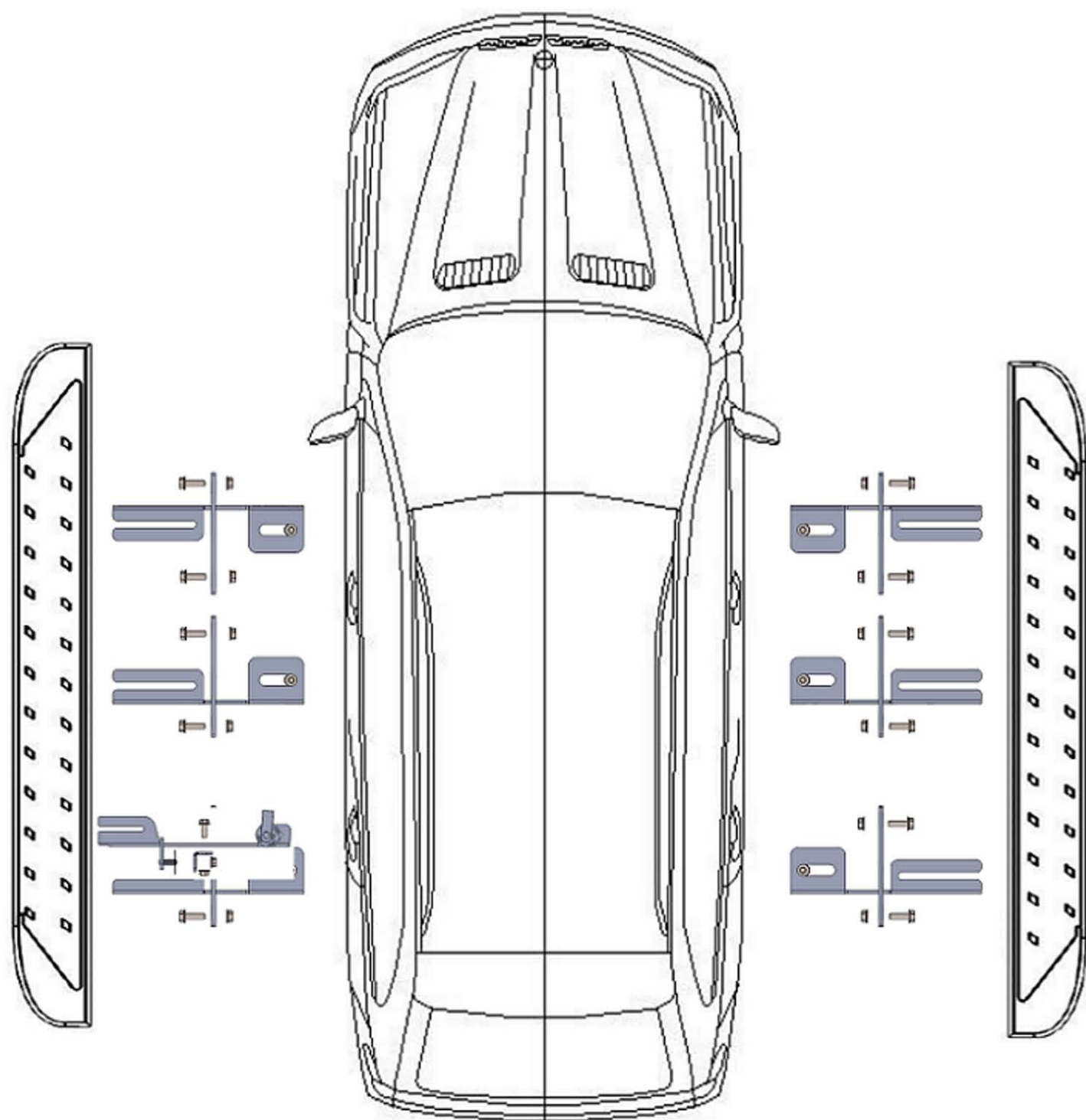
- 1) Flip your Romik running boards onto a flat surface, make sure to place the running boards on a towel or cardboard in order to protect its image #1.
- 2) Loosen the 8MM bolts on back of your running boards image #2. Depending on your model there will be either 6 or 8 bolts installed per side.
- 3) Once your brackets have been installed, place the running board onto the brackets as shown on image #3 make sure it is snug.
- 4) Once adjusted to your liking, proceed to torque the mounting brackets.
- 5) Follow the torque procedures for aluminum running boards. Failure to do so will cause damages on the bottom of the running boards.
- 6) Torque your running boards to **7 ft lbs** using a torque wrench.
- 7) Cleaning and maintaining your running boards is important, apply a light coating of a quality carnauba wax at least 2x per year. Wash often with a mild soap and make sure to remove all soap residue. Note: Car washes use a strong soap make sure to use enough water to remove all soap residue.

NOTE: DO NOT OVERTIGHTEN as it may damage the bottom of the running boards

WARNING: USE OF POWERTOOLS WILL RESULT IN DAMAGE AND IT IS NOT COVERED UNDER WARRANTY.

For Technical Support please call 1-866-71-ROMIK

2622 – JEEP WRANGLER JL 2018 - PRESENT



2622 Jeep Gladiator 2020 - Present

