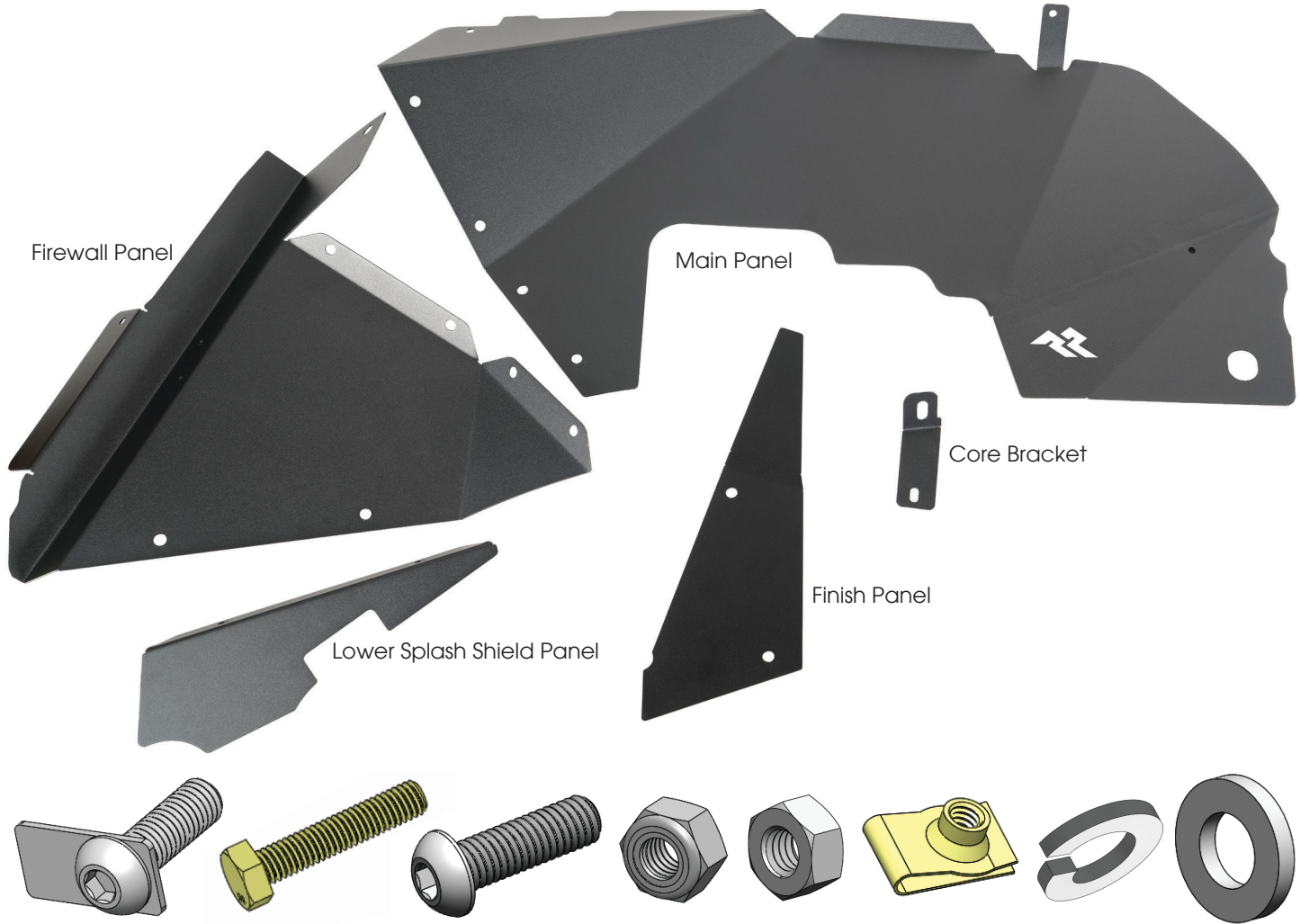


Rugged Ridge Inner Fender Liner, JL & JT



Components

1. Main Panel, Driver Side.....	1	11. M6 X 30mm Bolt Plate	1
2. Main Panel, Passenger Side.....	1	12. M6 X 30mm Hex Head Bolt.....	2
3. Firewall Panel, Driver Side.....	1	13. M6 X 25mm Button Head Allen Bolt	26
4. Firewall Panel, Passenger Side.....	1	14. M6 Locking Nut.....	1
5. Lower Splash Shield, Driver Side.....	1	15. M6 Hex Nut.....	12
6. Lower Splash Shield, Passenger Side.....	1	16. M6 X 13mm U-Clip	16
7. Finish Panel, Driver Side.....	1	17. M6 Lock Washer	12
8. Finish Panel, Passenger Side.....	1	18. M6 Flat Washer	40
9. Core Bracket, Driver Side	1		
10. Core Bracket, Passenger Side	1		

OMIX-ADA® TECHNICAL SUPPORT

PHONE: M-F 8am - 5pm EST 1-800-449-6649

FOR WARRANTY OR TECH CONCERNS EMAIL: webmaster@omixsupport.com

ATTN: STATE OF CALIFORNIA CONSUMERS

WARNING: Cancer and Reproductive Harm - www.P65Warnings.ca.gov.

Rugged Ridge Inner Fender Liner, JL & JT

1. Start by removing inner fender liner. This will require popping all the plastic rivets that join the liner to the fender edge. There is multiple 10mm bolts and plastic clips that must be remove to pull the liner out.



2. Remove the lower fender panel located at the rear bottom of the fender. It's held in with two plastic trees.

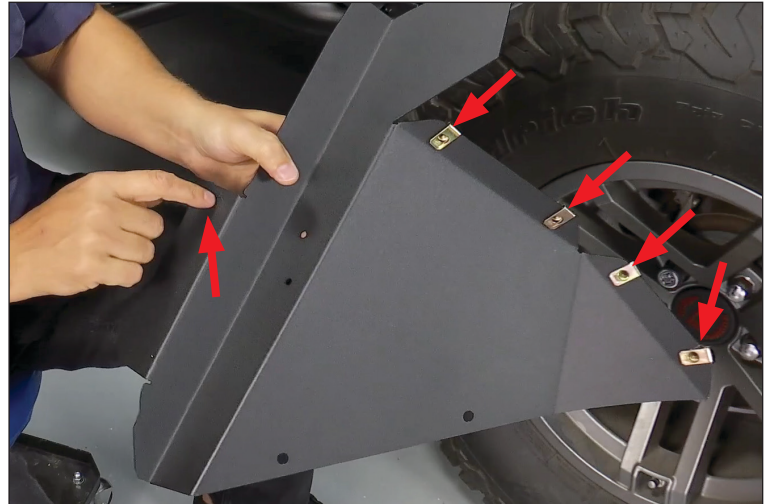


3. For Passenger side only insert the bolt plate through the fender frame located towards the top rear of the fender. The Drivers side will use a standard bolt for this mounting location.



Rugged Ridge Inner Fender Liner, JL & JT

4. Install U-clips to the Firewall panel before installing. The panel requires 5 clips.



5. On the Firewall panel there are two holes on the front face of the panel. The top hole is used to mount the Passenger side, the lower hole used to mount the Drivers side. Before placing the panel to the Jeep install an allen head bolt with washers and nut on the hole not used to mount. In the image shown here is the Passenger side we installed the included allen bolt to the lower hole.

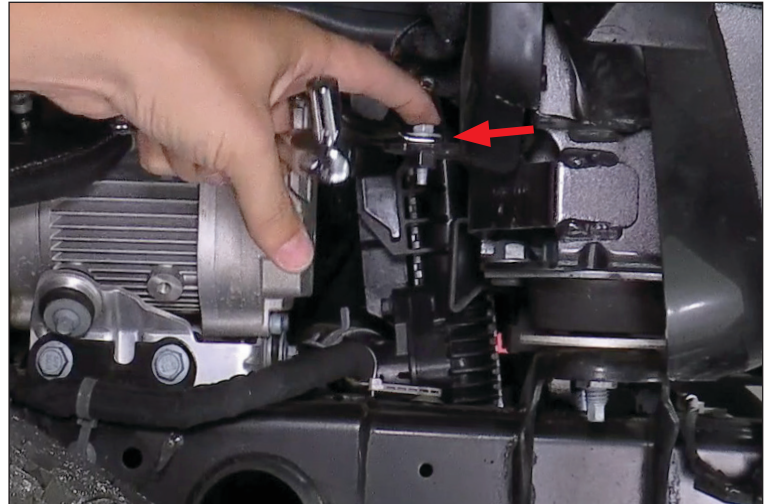


6. Place the Firewall panel in place to the Jeep. Use allen head bolt with washers and nut through the available mounting hole from step 5. Don't fully tighten at this point, but tighten the bolt enough to hold panel in place.



Rugged Ridge Inner Fender Liner, JL & JT

7. Towards the front of the fender there is a bolt that must be replaced with a longer bolt. Remove the bolt shown on this image, use M6 x 30mm hex head and tighten with washer and nut. Then slide Core Bracket on stud and use another set of washers and nut to hold bracket to the longer bolt. Don't fully tighten the second nut yet to allow bracket to move freely. Place a U-clip to the Core bracket tab.



8. Place main panel into place



9. Now begin attaching allen head bolts with flat washers to the spring clips on the Firewall panel. Don't fully tighten at this point.



Rugged Ridge Inner Fender Liner, JL & JT

10. The main panel will install over the bolt plate installed from step 3. Attach with flat, lock washer and nut. Remember the Passenger side uses the nut plate, the Driver's side uses a bolt instead.



11. Now attached the allen head bolt with washer to the Core bracket from step 7.

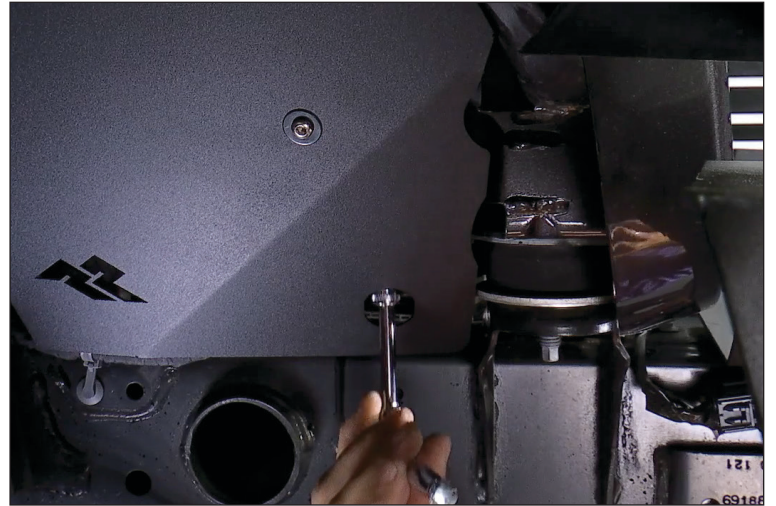


12. Now for the last mounting point attach the upper mounting tab of the main panel to the fender bracket of the Jeep using a allen head bolt with washers and nut. Adjust the panel now that all the hardware is in place. Assure the panels are not rubbing the frame or other components and now fully tighten hardware starting here with the upper mounting tab.



Rugged Ridge Inner Fender Liner, JL & JT

13. The stud holding the Core bracket can be accessed by inserting your socket and wrench through the hole at the front of the Main panel. Fully tighten at this time.



14. Now go through and tighten the remaining hardware.

There is a Finish panel that attaches at the lower corner of the fender. The bottom fender clip must be released then the panel placed in position. The clip then goes through the panel and fender. The upper hole uses a Allen Head bolt with washers and nut.



15. Now to finish install attach the remaining finish panels. The Lower Splash shield attaches to the bottom of the Firewall Panel. It requires two U-clips attached to the shield and the shield placed behind the Firewall panel and then attached with Allen Head Bolt and washer.

