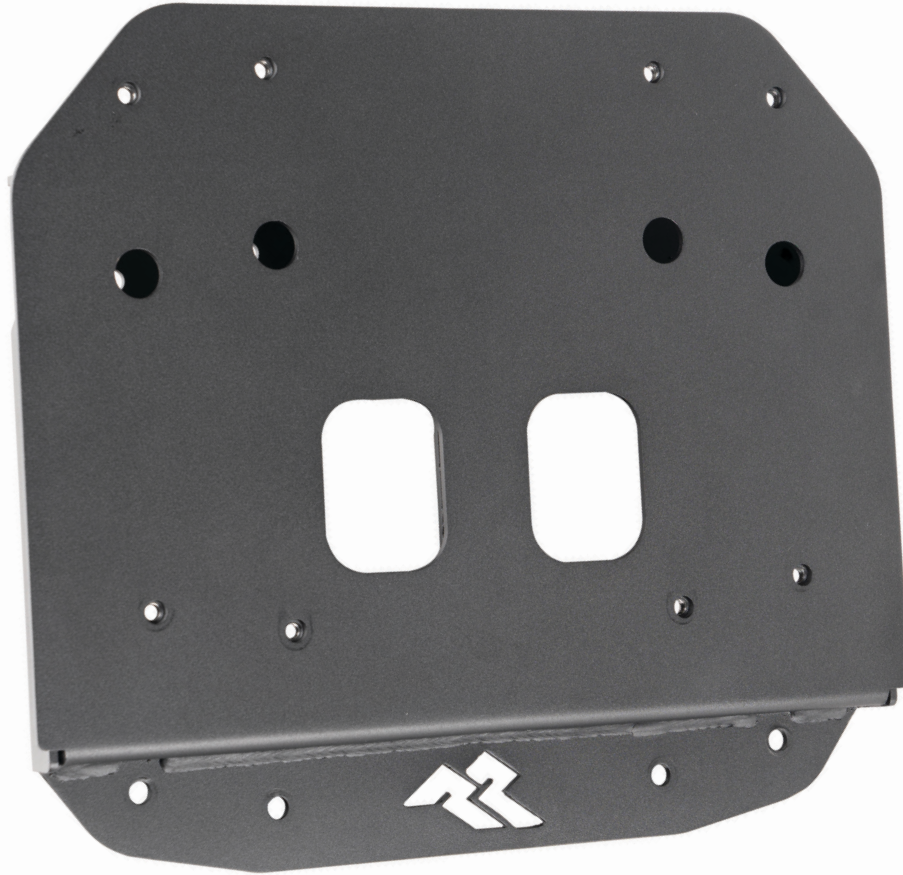


## Rugged Ridge Spare Tire Relocation Bracket, JL



### Components

- |  |   |                               |   |
|--|---|-------------------------------|---|
| 1. Spare Tire Relocation Bracket ..... | 1 | 3. M8 Black Flat Washer ..... | 8 |
| 2. M8 Black Hex Head Screw .....       | 8 | 4. M8 Black Lock Washer ..... | 8 |

OMIX-ADA® TECHNICAL SUPPORT

PHONE: M-F 8am - 5pm EST 1-800-449-6649

FOR WARRANTY OR TECH CONCERNS EMAIL: [webmaster@omixsupport.com](mailto:webmaster@omixsupport.com)

ATTN: STATE OF CALIFORNIA CONSUMERS

 **WARNING:** Cancer and Reproductive Harm - [www.P65Warnings.ca.gov](http://www.P65Warnings.ca.gov).

## Rugged Ridge Spare Tire Relocation Bracket, JL

1. Install spare tire from tailgate by removing the three lug nuts. With an assistant, lift tire from mount. Next, remove the eight bolts holding the Factory Mount. Once removed, have assistant hold Factory Mount to the side as you mount the Spare Tire Relocation Bracket. Prevent wiring from being pulled tight.



2. Attach Spare Tire Relocation Bracket to tailgate using the OE hardware just removed. Tighten in an alternating pattern. **Avoid using power or air tools.** Tighten to 20ft lbs torque.

Next, attach Factory Mount to Spare Tire Relocation Bracket using supplied M8 hardware. Tighten to 20ft lbs torque.

It is recommended to apply Blue Loctite to all bolts when mounting Spare Tire Relocation Bracket.



3. Using an assistant, install spare tire. Tighten lug nuts to 80ft lbs torque.

Once everything is tight and secure, open and close tailgate to assure there is nothing rattling or loose. This completes your installation.

