



Rusty's Off-Road Products
7161 Steele Station Road
Rainbow City, AL 35906
1-256-442-0607
www.rustysoffroad.com

Rusty's JL Full Width Rear Trail Bumper RJB9009-JL INSTALLATION INSTRUCTIONS

Last Revised: 10/22/2018

Introduction:

Rusty's recommends that this installation be performed by a certified automotive technician or a person with professional mechanical knowledge. Installing this kit without this expertise may jeopardize the handling and safety of the vehicle.

Read instructions several times before starting. Be sure you have all the needed parts and know where they install. Read each step completely as you go. Exhaust modifications may be necessary. Prior to drilling or cutting, check behind the surface being worked on for any wires, lines, or hoses that could be damaged. After any drilling or cutting, remove burrs and grind smooth any surfaces. An inclinometer or similar tool may be needed to measure driveshaft angles before and after the installation.

Warning:

- It is the owners' responsibility to inspect all Rusty's products for proper torque specs to prevent loosening of components.
- Seat belts and shoulder harnesses should be worn at all times.
- Re-check all bolts and nuts after the first 100 miles and after any off-road usage during the first 300 miles.
- Although all of our products are made from the highest quality materials possible, they are not a substitute for Safe and Careful driving. In other words, have good safe on-road / off-road sense. Know the terrain, the speed limitations, and any obstacles that may lie ahead. Please remember to preserve our right to enjoy public land through the proper use of off-road vehicles.

Before Starting Installation:

1. Carefully Read all warnings and instructions completely before beginning.
2. Verify all parts have been received in this kit by checking the parts list on page#2 of this document.
3. Only install this kit on the vehicle for which it is specified.
4. Park the vehicle on a clean, dry, flat, level surface and block the tires so the vehicle cannot roll in either direction.
5. Be certain the vehicle is safely secured on jack stands or a vehicle lift prior to working around or under a vehicle. Never rely on a jack alone to support a vehicle's weight; use appropriately rated stands to support the vehicle's frame and any other heavy components.



For Questions or Suggestions, contact our Tech Department (256-442-0607)



Rusty's Off-Road Products
7161 Steele Station Road
Rainbow City, AL 35906
1-256-442-0607
www.rustysoffroad.com

Parts List:

Note: Please be sure that you have all the provided parts listed below before continuing with the installation.

<u>Part #</u>	<u>DESCRIPTION:</u>	<u>Quantity</u>
RJB9009-JL	Rusty's JL Full Width Rear Trail Bumper	1
RJB9009-JL-DTN	Rusty's Passenger Side Inner Frame Rail Double Tab Nut	1
RJB9009-JL-SW	1/4" Thick Spacing Washers	2
74454919	1/2"-13 x 1-1/2" Length Grade 8 Hex Head Cap Screw	2
05724646	1/2" SAE Flat Washer	2
67563080	1/4"-20 x 3/4 Length Button Head Cap Screw	4

Important Note For JL Wranglers Without Factory Backup Sensors

If your vehicle is not equipped with factory backup sensors you will need to purchase the parts listed below from your local Jeep Dealership/Mopar Dealer to fill the four hole locations for the factory back up sensors in the supplied bumper.

<u>Part #</u>	<u>DESCRIPTION:</u>	<u>Quantity</u>
6MH85RXFAB	Parking Sensor Bezel	4
68295603AB	Parking Sensor Bracket	4
68289851AA	Parking Sensor Bezel Ring	4

Factory Rear Bumper Removal Instructions

1. Disconnect the negative battery terminal. Park the vehicle on level ground and set the emergency brake.
2. Remove the plastic mud guard covers on each side of the rear bumper by removing the three bolts per side with the use of a 8mm socket.
3. Remove the rear bumper braces on each side of the rear bumper by remove the four bolts per side with the use of a 16mm socket. (**Note:** Two bolts located at the frame and two bolts located at the rear bumper per side.)
4. Disconnect the rear bumper wiring harness connector located under the vehicle on the driver side, then release the two plastic clips that hold the wiring harness to the factory bumper.
5. Remove the spare tire from the vehicle.
6. Remove the two 16mm bolts (One Per Side) that are located under the bumper on each side of the hitch area. If equipped with a factory hitch, remove the two addition 16mm bolts holding the trailer harness plug to the bumper.



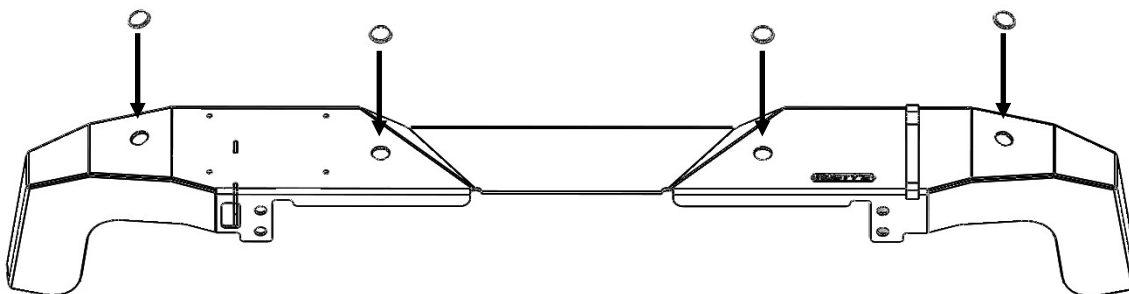
For Questions or Suggestions, contact our Tech Department (256-442-0607)

Factory Rear Bumper Removal Instructions (Continued)

7. Remove the four bolts on each side of the vehicle that secure the rear bumper to the frame with the use of a 18mm socket. Remove the two bolts on the passenger side that secure the factory tow hook to the frame with the use of a 21mm socket. (**Note:** Save these bolts for reuse.)
8. Remove the two inner bumper brackets by removing the four nuts (2 per side) from the rear bumper with the use of a 16mm socket or wrench.
9. Remove the rear bumper from the vehicle.
10. Remove the parking sensors from the factory rear bumper if equipped by completing each of the steps listed below. Note the location of each sensor to be reinstalled in the same location once instructed to reinstall. (**Note:** Use caution not to damage the retaining rings or the sensors so that they can be reused.)
 - A. Spread the tabs on the inner mounting ring in order to release the sensor from the back side of the bumper.
 - B. Spread the tabs on the outer mounting ring to release the sensor from the inner mounting ring.
 - C. Press the tabs inward on the inner mounting ring and push the sensors out of the front side of the bumper.
11. Remove the factory wiring harness from the rear bumper by releasing the series of plastic clips that secure the harness to the bumper.

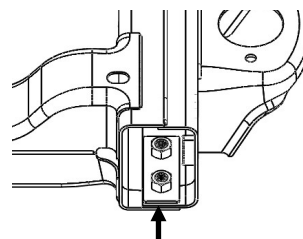
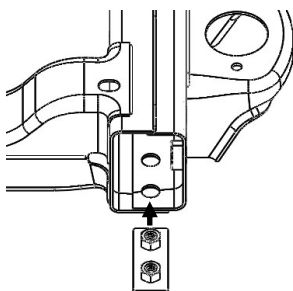
Installation Instructions

1. Place the supplied rear bumper on either a soft work surface such as a blanket or the cardboard that the bumper came packaged in so that you can reinstall the factory backup sensors and wiring harness, if equipped.
2. Reinstall the factory back up sensors, if equipped, at this time by reversing the process used to remove the sensors. Reinstall the sensors in the same locations and orientation as removed from the factory rear bumper.
3. Reinstall the factory wiring harness to the supplied rear bumper and reconnect to each of the four back-up sensors (if equipped).
4. Install the back up sensor cap covers at this time if required to fill the hole locations on any JL Wrangler models not equipped with factory back up sensors.

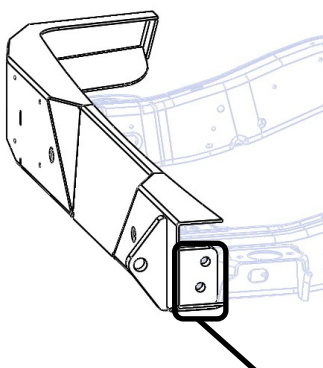


Installation Instructions (Continued)

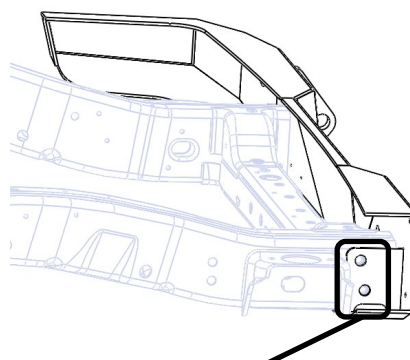
5. Insert the supplied double tab nut into the passenger side rear frame rail and align with the two factory hole locations as illustrated in the images below.



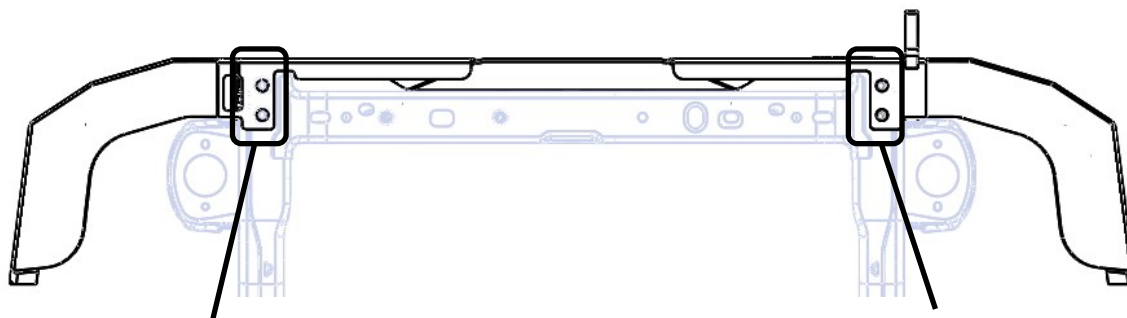
6. With the help from an assistant, install the rear bumper to the vehicle by aligning the mounting holes on the frame rails and reinstall the factory hardware as shown in the diagrams below. The factory hardware will be installed in different mounting locations than it did from the factory. (**Note:** Please note that the factory tow hook (if equipped) will not be able to be reinstalled with this bumper unless modified. This modification includes machining of the factory tow hook bracket mounting points.)



Install the Long Factory Bolts with a 16mm Head in these two hole locations.



Install the Long Factory Bolts with a 16mm Head with the supplied (Qty:2) 1/4" Thick Spacing Washers.



Install the Short Factory Bolts with a 21mm Head in these two hole locations.

Install the supplied (Qty:2) 1/2" Bolts and 1/2" washers



Rusty's Off-Road Products
7161 Steele Station Road
Rainbow City, AL 35906
1-256-442-0607
www.rustysoffroad.com

Installation Instructions (Continued)

7. Installation Complete!

WARNING

It is the owners' responsibility to inspect all Rusty's products for proper torque specs to prevent loosening of components. Seat belts and shoulder harnesses should be worn at all times. Re-check all bolts and nuts after the first 300 miles and after any off-road usage during the first 300 miles. Although all of our products are made from the highest quality materials possible, they are not a substitute for Safe and Careful driving. In other words, have good safe on-road / off-road sense. Know the terrain, the speed limitations, and any obstacles that may lie ahead. Please remember to preserve our right to enjoy public land through the proper use of off-road vehicles. Thank you for choosing Rusty's Off Road Products.



For Questions or Suggestions, contact our Tech Department (256-442-0607)