



FILTERS

COLD AIR INTAKE

INSTALLATION INSTRUCTIONS:

P/N: 75-5121 / 75-5121D





FILTERS

BREATHE EASY. YOUR ENGINE & WARRANTY ARE PROTECTED.™

Thank You! for purchasing your new S&B Filters intake kit. If at any time you need additional assistance with installation or have any other questions or comments, feel free to call our customer service department at 909-947-0015. You can also take advantage of our live chat at www.sbfilters.com and connect with an S&B representative immediately. We hope you enjoy your new S&B Filters product and thank you for your continued support. Breathe Easy. Your Engine and Warranty Are Protected.

VEHICLE APPLICATION:

YEAR: 2018

MAKE: Jeep

MODEL: Wrangler JL

ENGINE: 3.6L

APPROX. INSTALL TIME: 1HRS | 00MIN

TOOLS REQUIRED:

- Ratchet/Wrench
- 8mm, 10mm Socket
- Panel Popper
- Crescent Wrench
- Phillips Screwdriver
- Scissor

NOTES:

Kit may not fit with the following Aftermarket Parts installed:

- Body Lift or Lowering Kit
- Custom Hood
- Throttle Body Spacer/ Upgrade
- Aftermarket turbocharger

CARB STATUS - PENDING

Product will be submitted to Air Resources Board for approval shortly.

*Not Legal for use in CA or other states adopting CA emissions standards"
See Page 2 for more info.*

S&B FILTER MAINTENANCE:

- Cleanable (KF-1057). If the enclosed filter is Red, it came preoiled from our factory. Please visit www.sbfilters.com for exact oil amount required after cleaning.
- Disposable (KF-1057D). If the enclosed filter is White, it is a disposable filter and should be discarded once it reaches capacity. This filter **does not require oil**. For more info on S&B's disposable filter, visit www.sbfilters.com.

BEFORE YOU START

- Please read the entire product guide before proceeding.
- Ensure all components listed on pages 3 & 4 are present.
- If you are missing any of the components, call our customer support at (909) 947-0015.
- Do not work on your vehicle while engine is hot.
- Make sure the engine is turned off and the vehicle is in Park or the Parking Brake is set.

GENERAL INFORMATION AND WARNINGS

Operation in Snow and Rain

If you are driving in heavy snowfall or extreme rain conditions, you should always check for accumulated snow and water on the air filter following your OE recommendations for driving in these conditions.

The following is recommended after operating the vehicle up to 100 miles in heavy snowfall or extreme rain: At the earliest opportunity, open the hood and check the air box and filter. If any snow has accumulated, make sure to remove the snow from the filter, box, and inlet. It is okay if the filter is a little wet. Wet filters will normally dry out on their own. If the filter is dripping wet, it should be replaced with another filter that is not wet. Do not reuse the dripping wet filter until it has naturally dried.

Air Box Plug Testing

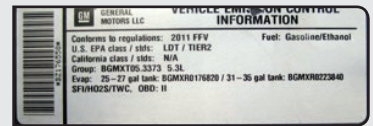
Stock intake boxes are a significant contributor to poor air flow which is why S&B designs custom air boxes with secondary and/or enlarged openings. With that said, S&B recognizes the benefits of cooler air, so we have included a plug to seal off the opening if so desired. For optimal performance, we recommend that the intake be used without the end cap except in conditions of extreme heatwave.

Performance Testing

- After your installation is complete engage parking brake and start your engine. Listen for abnormal noises. If an air leak is detected, re-inspect hoses and connections as they may need to be repositioned and tightened.
- S&B FILTERS recommends that you keep your OE intake system in the event it is required in the future.
- In order to maintain your warranty, all connections and components must be checked periodically for alignment and for proper tension on all connections. Failure to do so may void your warranty.
- Use only S&B FILTERS cleaning and oil products to service your filter. Using any other brand oil and/or cleaners on your S&B air filter may void your warranty.

Warning!

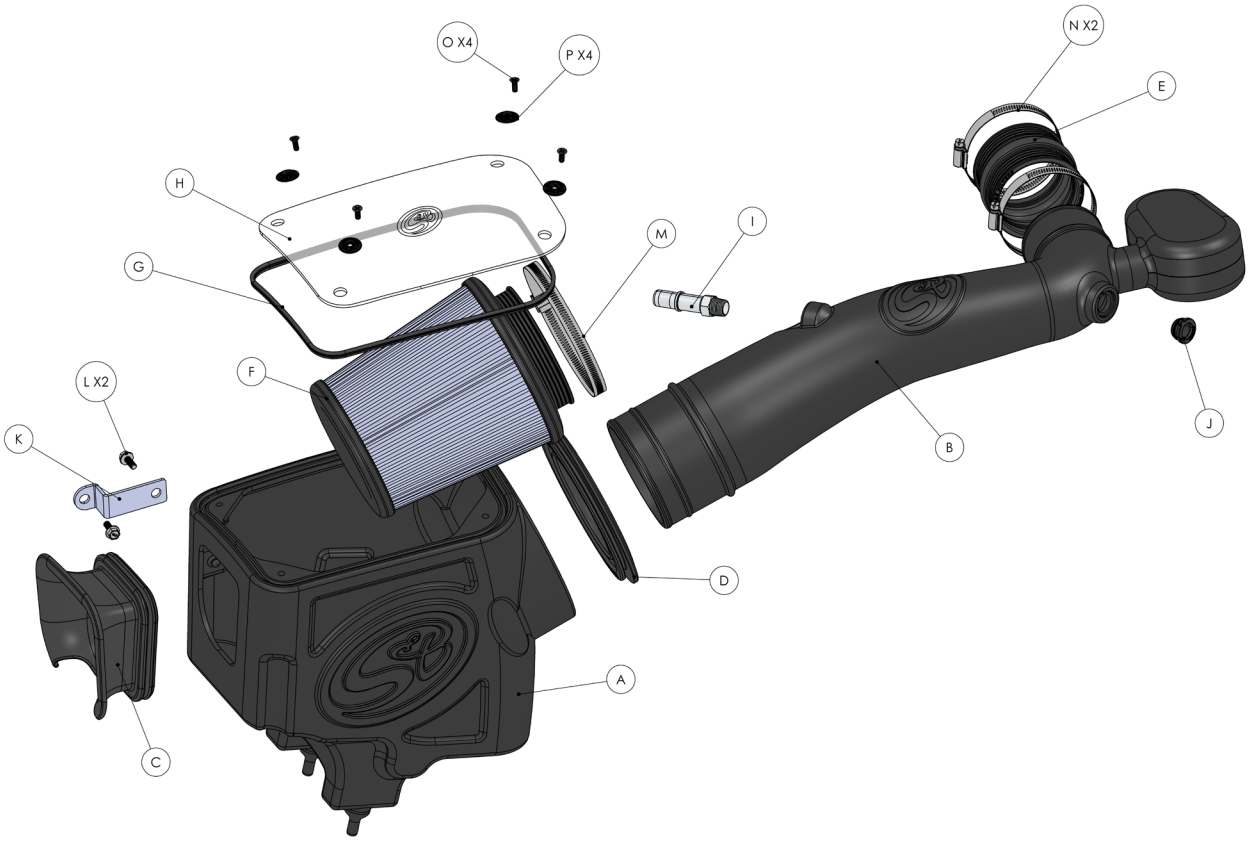
If your vehicle has a Vehicle Emission Control Information decal affixed to the factory airbox, a new replacement label must be obtained and installed in a readily visible position in the engine compartment in order to remain CARB compliant. Failure to do so will prevent the vehicle from passing a smog check. Replacement labels can be ordered from your local dealership. Regulations state that the VEI label shall not be affixed to any equipment which is easily detached from the vehicle. Label placement, under the hood on a painted surface is recommended.



Emissions Standard

The California Air Resource Board (CARB) requires that an E.O. Identification label be applied to the vehicle in order to pass a smog check inspection when a Performance Intake Kit has been installed. You must place the E.O. Label provided on or near the intake kit after installation so that a smog check technician can easily verify the E.O. Number. Check the status of the exemption process by looking up a specific part number at www.sbfilters.com. The CARB Exemption number and/or status is listed under the Product Details section for each part number. If the status shows as "Pending," CARB has yet to issue an exemption but the product has been submitted. Products that have not been issued an E.O. number are street legal in most states, but may not be used on emission controlled vehicles in the state of California and are for off road use only. If you purchased your kit from S&B Filters directly, or an authorized S&B Filters Dealer, email customerservice@sbfilters.com with a photo of your intake and your mailing address so we can mail you an Exemption Sticker.

EXPLODED VIEW:



PARTS LIST: 75-5121 / 75-5121D

ITEM	QTY	DESCRIPTION	PART NUMBER
A	1	INTAKE BOX	AI1339B-00
B	1	INTAKE TUBE	AI1339-00
C	1	FENDER SEAL	AI2108C-00
D	1	TUBE SEAL	AI1650C-00
E	1	COUPLER	AI1601C-00
F	1	AIR FILTER	KF-1057
G	1	LID SEAL, 31"	AI1766-07
H	1	CLEAR LID	AI2120-00
I	1	QUICK CONNECT, FITTING TO 3/8" NPT	AI1701-00
J	1	IAT SENSOR GROMMET	AI1948C-00
K	1	BRACKET	AI2113-CT
L	2	BOLTS, FLANGE, M6 X16MM	AI2014-00
M	1	HOSE CLAMP #80	AG1010-00
N	2	HOSE CLAMP #56	AG1007-00
O	4	LID SCREW, 10-24	AI2005-00
P	4	LID WASHER, #10	AI2006-00

AM10451-00 REV-C 11/07/2018

HARDWARE PACKS
HP1583-00
AG1007-00
HP1585-00
AI2113-00
AI2014-00
HP1586-00
AI1701-00
AI1948C-00
LHP0004-00
AI2005-00
AI2006-00
HP1584-00
AI2120-00
AI1766-07

INSTALLATION STEPS:

- 1** With the ignition switched off and the parking brake set. Disconnect the negative battery cable on the passenger side. **Note:** Failure to disconnect the battery for atleast 2 hours may cause the CEL to illuminate upon completion of the installation and subsequent operation. Do not skip this step!
Tools Required: Ratchet, 10mm Socket/Wrench



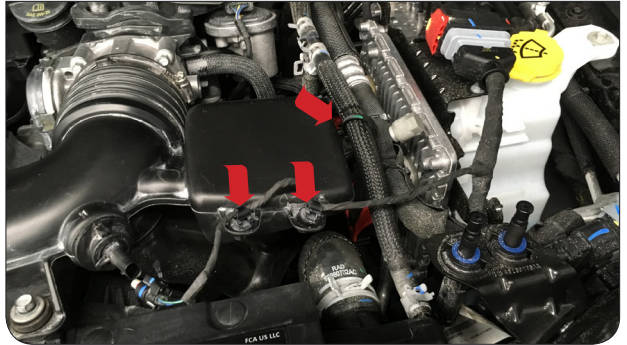
- 2** Press down on the plastic clip to disengage the lock on the fitting then pull away to disconnect the CCV hose.



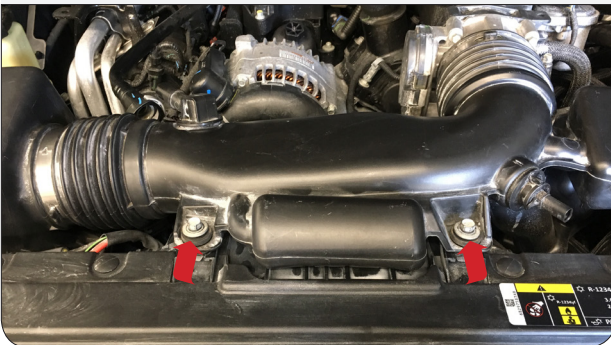
- 3** Disconnect the electrical harness from the IAT sensor.



- 4** Disconnect the three harness clips attached to the stock intake tube.
Tools Required: Panel Popper



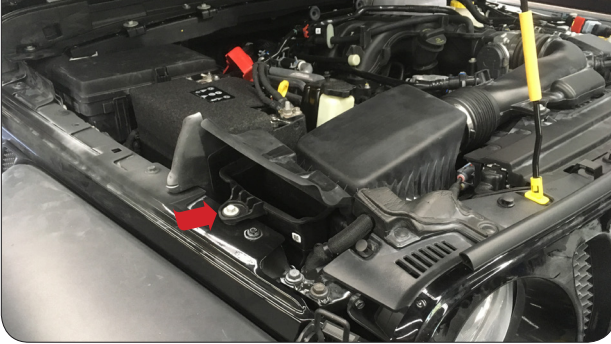
- 5** Remove the two bolts securing the stock intake tube to the fan shroud.
Tools Required: Ratchet, 10mm Socket/Wrench



- 6** Loosen the hose clamp at the throttle body then pull the intake tube out and away from the throttle body.
Tools Required: Ratchet, 8mm Socket/Wrench



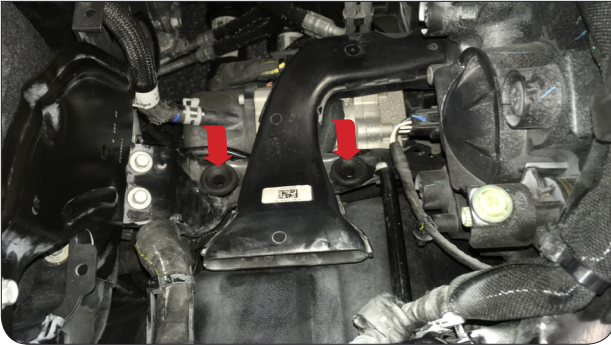
- 7** Remove the bolt securing the stock intake box to the fender.
Tools Required: Ratchet, 10mm Socket/Wrench



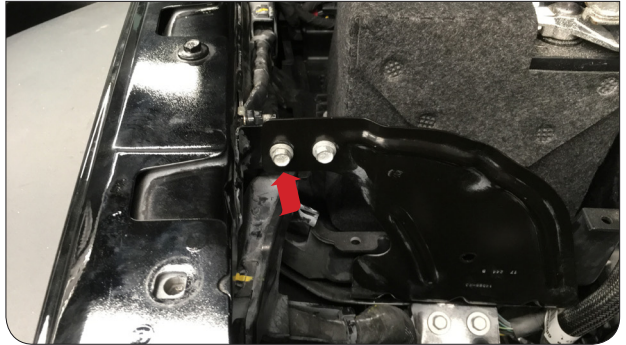
- 8** Lift the stock intake box to unseat the prongs from the grommets then remove the stock intake assembly from the vehicle.



- 9** Check to make sure the two grommets are still in place. Adjust and reinstall if necessary.



- 10** Remove the bolt securing the two battery tray brackets together.
Tools Required: Ratchet, 10mm Socket/Wrench



- 11** Install the IAT Sensor Grommet (J) into the Intake Tube (B).



- 12a** Note the position of the IAT sensor on the stock intake tube. Turn the sensor counterclockwise to unlock then pull out...



INSTALLATION STEPS:

- 12b** Install the IAT sensor into the Intake Tube (B). Make sure the sensor is installed in the same position as the stock intake tube.



- 13** Install the Quick Connect Fitting (I) into the Intake Tube (B) until finger tight then with a Wrench tighten the fitting an additional one to two complete turns.
Tools Required: Crescent Wrench



- 14** Install the Coupler (E) with the two #56 Hose Clamps (N) onto the Intake Tube (B) then tighten the hose clamp closest to the intake tube. Do not overtighten. Leave the hose clamp for the throttle body loose.
Tools Required: Ratchet, 8mm Socket/Wrench



- 15** Install the Tube Seal (D) onto the Intake Box (A).



- 16** Install the Fender Seal (C) onto the Intake Box (A).



- 17** Install the Lid Seal (G) onto the groove on top of the Intake Box (A). Cut away any excess lid seal.
Tools Required: Scissor



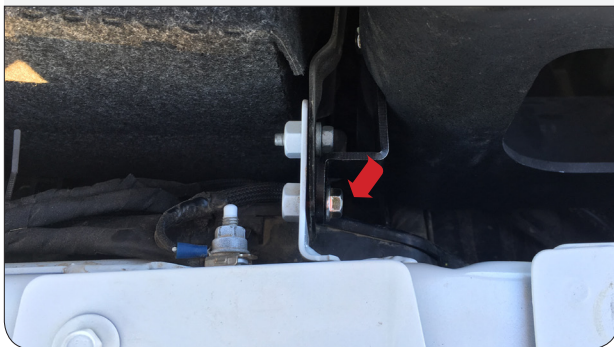
18 Install and tighten the Bracket (K) with the M6 Bolt (L) onto the Intake Box (A). Do not overtighten.
Tools Required: Ratchet, 10mm Socket/Wrench



19 Align the prongs on the Intake Box (A) with the two grommets then push down on the intake box to fully seat the prongs.



20 Align the mounting hole and secure the Bracket (K) to the battery tray bracket with the M6 Bolt (L). Position the Fender Seal (C) up against the fender then tighten. Do not overtighten.
Tools Required: Ratchet, 10mm Socket/Wrench



21a Install the Intake Tube (B) into the Intake Box (A) first then rotate the intake tube onto the throttle body.



21b Tighten the #56 Hose Clamp (N). Do not overtighten.
Tools Required: Ratchet, 8mm Socket/Wrench

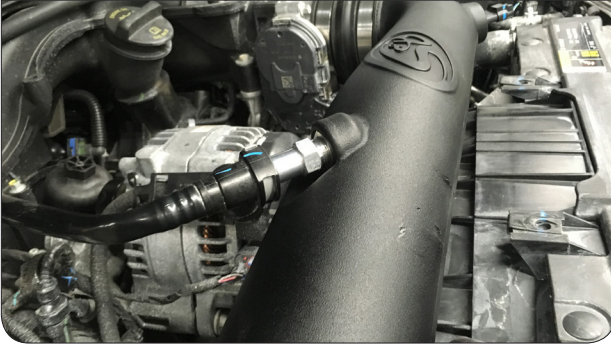


22 Connect the IAT electrical harness into the IAT sensor.



INSTALLATION STEPS:

- 23** Connect the CCV hose into the Quick Connect Fitting (I). You should hear a snapping sound when the CCV hose is fully secured.



- 24** Install the Air Filter (F) and #80 Hose Clamp (M) onto the Intake Tube (B) then tighten the hose clamp. Do not overtighten.
Tools Required: Ratchet, 8mm Socket/Wrench



- 25** Remove the protective covering from the Clear Lid (H).



- 26** Install the Clear Lid (H) onto the Intake Box (A) then install and tighten the Lid Screws and Washer (O & P). Do not overtighten.
Tools Required: Screwdriver



- 27** Inspect your installation, make sure the kit is properly positioned and all fasteners are secured. S&B Filter recommends keeping all stock parts in case you would ever need to reinstall the stock intake. Affix the ID label near the intake kit. The installation is now complete.



RELATED ITEMS FOR YOUR PURCHASE

Order Online today at www.sbfilters.com or through your local S&B distributor.



Replacement Cotton Filter
SKU# KF-1057



Replacement Dry Filter
SKU# KF-1057D



Filter Wrap for KF-1050
SKU# WF-1057



Precision II: Cleaning & Oil Filter
SKU# 88-0008