



WWW.SMITTYBILT.COM

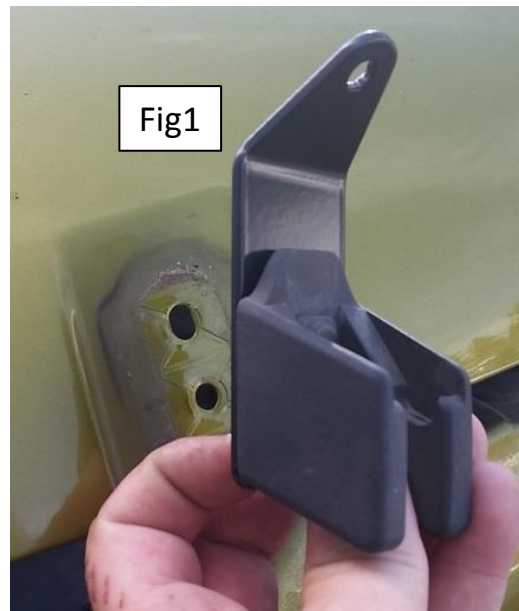
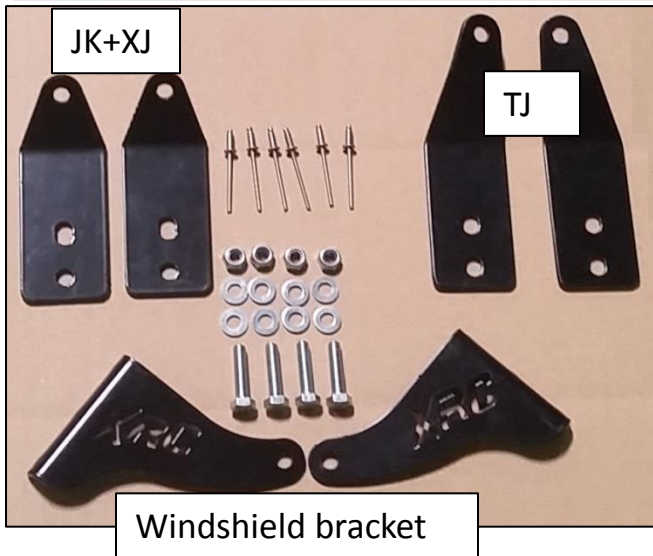
Installation Instructions
Limb Riser Kit JK, TJ, XJ
Part#7611, 7612,7613

NOTE: Carefully read entire instructions thoroughly before attempting to install this part.

<u>Parts included</u>	<u>Qty</u>
Windshield Bracket	L+R
Lower Bracket (JK+XJ)	2
Lower Bracket (TJ)	L+R
M8-1.0x30mm Hex head bolt Gr. 8.8	4
M8 Flat washer	8
M8-1.0 Nylock nut	4
1/8" Stainless rivet	6
Limb riser cable	2

Tools needed:
1/8" drill bit + drill
10mm wrenches
Rivet Gun
Touch up paint

**May not work
with some
aftermarket
hood latches
or light bars.**



Step 1: Park vehicle on level surface and engage parking brake.

Step 2: Remove driver and passenger side Hood latch from the jeep hood. Keep OE hardware, it will be re-used. This step does NOT apply to XJ.

Step 3: Place lower lib riser brackets onto hood latch mount Re-install latch mount to hood using previously removed hardware. Fig 1. If installing on a XJ go to step 4, if installing on Wrangler go to step 5.

For Technical Support/Warranty Information please call 310-762-9944
Smittybilt, 400 W. Artesia Blvd Compton, CA 90220



WWW.SMITTYBILT.COM

Installation Instructions

Limb Riser Kit JK, TJ, XJ

Part#7611, 7612,7613

Step 4: For XJ only. Locate mounting location on the hood as shown in Fig 2. This location will be $\frac{1}{2}$ " behind the front light and centered between the upper and lower body line. Use a $\frac{1}{4}$ " drill bit and use bracket as a template. Secure with M8 hardware. You will have to pull back the inner fender liner to access the inner fender. Go to step 5.

Step 5: Locate upper limb riser bracket.

JK: Set the bracket so that the lower rivet hole is lined up with the bottom edge of the rubber door seal. Mark the bottom hole location only. Fig 3.

TJ: Set the bracket as high up on the windshield frame as possible without interfering with a hard top or soft top or the windshield channel or seal. This is about $\frac{3}{4}$ " + below the windshield channel seal. Use extended cable to help determine highest position.

XJ: Set the bracket so the edge of the bracket lines up with the end of the drip rail. See fig 4.



Fig 2

XJ only



Fig 3

JK

For Technical Support/Warranty Information please call 310-762-9944
Smittybilt, 400 W. Artesia Blvd Compton, CA 90220

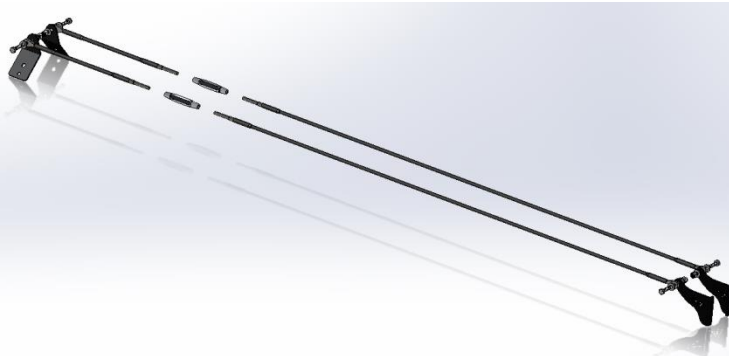
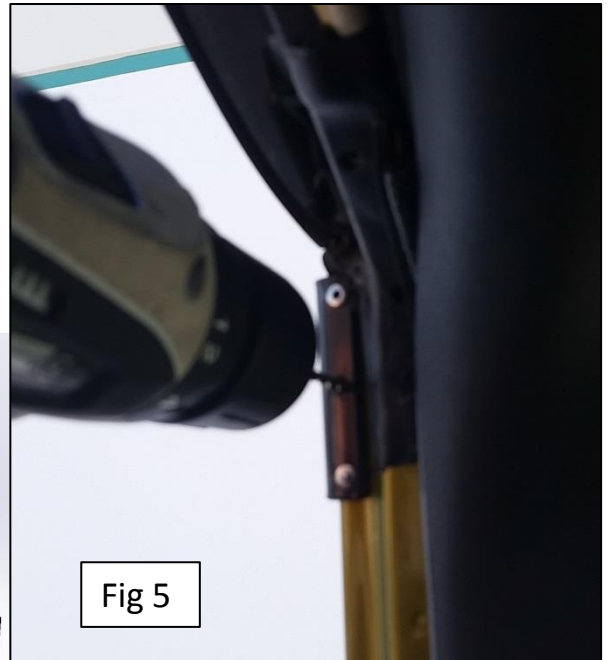
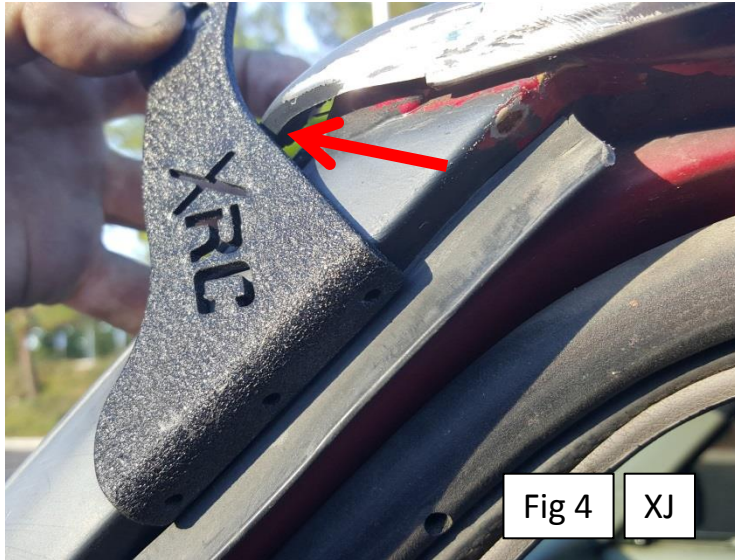


WWW.SMITTYBILT.COM

Installation Instructions

Limb Riser Kit JK, TJ, XJ

Part#7611, 7612,7613



Step 6: Drill 1/8" hole into the inner door frame where you made the mark.

Step 7: Install the upper limb riser bracket using one of the 1/8" rivets into the bottom mounting hole. After bottom hole has been riveted, use bracket as a template to drill the two upper holes. Make sure the bracket is tight against the body. Install remaining rivets. Apply a high quality paint into the holes drilled before installing rivets.

NOTE: When installing rivets, make sure they are flush against the upper limb riser bracket. If they stick out, slowly crush rivet while applying pressure to the rivet. This will make them pull in a bit so they can be flush.

For Technical Support/Warranty Information please call 310-762-9944
Smittybilt, 400 W. Artesia Blvd Compton, CA 90220



Installation Instructions

Limb Riser Kit JK, TJ, XJ

Part#7611, 7612,7613

WWW.SMITTYBILT.COM

Step 8: Attach the long section of limb riser to the upper mount using M8 hardware.

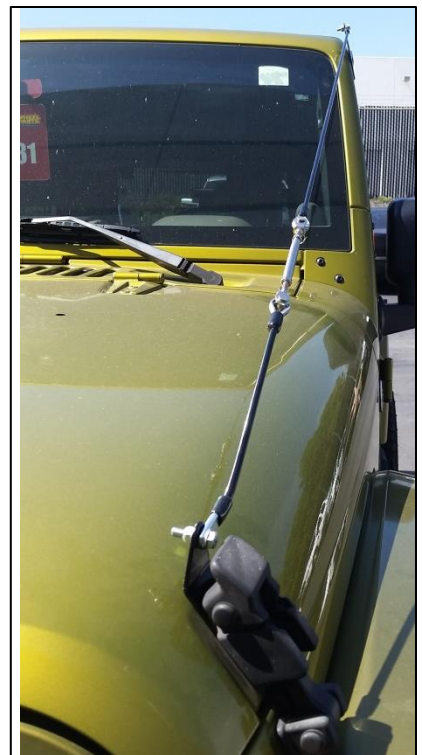
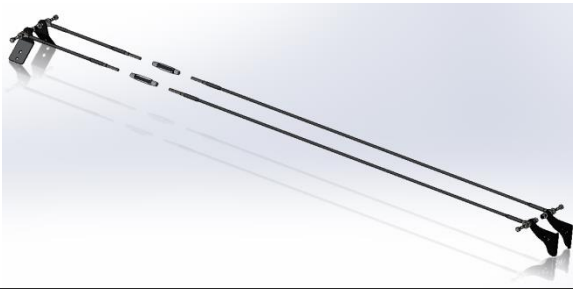
Step 9: Attach short end to the bottom limb riser bracket, you will have to adjust turn buckle out to gain some slack in the cable. Keep cable loose till all mounting hardware is tightened.

Step 10: Set tension on limb riser by turning the turnbuckle. DO NOT over tighten turnbuckle.

NOTE: Tension on cable should not be too tight. When off-roading, the vehicle has flex which will loosen and pull on the cable. It is possible for mounts to fold if cable is pulled too tight.

Step 11: Once tension is set, tighten the jam nuts on the turnbuckle.

Step 12: As vehicle flexes, the cable may stretch, especially in the beginning. Simply re-adjust tension as needed. Periodically check all hardware for proper torque.



For Technical Support/Warranty Information please call 310-762-9944
Smittybilt, 400 W. Artesia Blvd Compton, CA 90220



Installation Instructions

Limb Riser Kit JK, TJ, XJ

Part#7611, 7612,7613

WWW.SMITTYBILT.COM

Limited Warranties

Smittybilt's products are covered under the following limited warranties only. Note that the duration of the limited warranty differs according to the material and finish of the product purchased. Subject to the duration and conditions of the limited warranty stated below, Smittybilt warrants to the original retail purchaser that its products are free from defects in material and workmanship. All other warranties and representations express or implied, are hereby disclaimed, including fitness for merchantability and buyer's intended use or purpose. All parts are sold "AS IS" except for the limited warranties granted herein. Buyer assumes all risks as to the selection, suitability and performance of all goods and products selected. This limited warranty does not cover damage or impairment in any part due to misuse, improper installation, accident or contact with on-road or off-road hazards, product modification, improper or inadequate cleaning and/or maintenance. Smittybilt is not responsible for items damaged during shipping. This warranty is not transferable from the original buyer. For the original Buyer to be eligible for the limited warranty coverage, the Buyer must provide proof of purchase.

Customer's remedy hereunder shall be limited only to repair or replacement (at Smittybilt's option) of any defective part(s) returned to Smittybilt at customer's expense. The determination of whether or not a returned part is defective or subject to coverage under the limited warranties stated herein shall be made at Smittybilt's sole discretion.

Limited Five (5) Year / 50,000 Mile Pro-Rata Warranty (whichever occurs first) on Dual-Stage Powder Coating Products -

Smittybilt dual-stage powder coated products carry the foregoing limited repair or replacement warranty for a period of (5) years or 50,000 miles (whichever occurs first) from date of purchase against workmanship and defects in the material, provided that any claim submitted after (2.5) years from date of purchase shall, if accepted, be satisfied by Smittybilt offering customer a credit on the purchase of a replacement product equal to fifty percent (50%) of customer's initial purchase price.

To assure product quality, Smittybilt reserves the right to change product design, material, specification and finishes without prior notice to customers. This limited warranty gives you specific legal rights and you may also have other rights, which may vary from state to state. Some states do not allow limitations on how long an implied warranty lasts, so the above limitations may not apply as to you. Also, some states do not allow the exclusion or limitation of incidental or consequential damages, so the above limitations or exclusions may not apply to you. Smittybilt reserves the right to discontinue product lines and substitute products, or provide other remedies than those listed in this limited warranty for those discontinued products.

Warning

Rollover and other types of vehicle accidents may result in serious injury or death to you, your passengers and others sharing the road. Smittybilt accessories are decorative and are not intended to reduce or avoid injury or damage in the event of an accident. The weight and location of Smittybilt accessories may affect your vehicles' handling, stability and performance, creating an increased risk of accident or rollover. Before installing any accessory, check state laws and assure that the accessory will not obscure any lights or interfere with proper operation on your vehicle's safety equipment. Consult your owner's manual and the Smittybilt instructions, or additional safety information. Smittybilt products, nor the warnings contained herein, are not a substitute for your safe driving. Don't drink and drive, always use seat belts and don't drive faster than conditions permit.

For Technical Support/Warranty Information please call 310-762-9944

Smittybilt, 400 W. Artesia Blvd Compton, CA 90220