

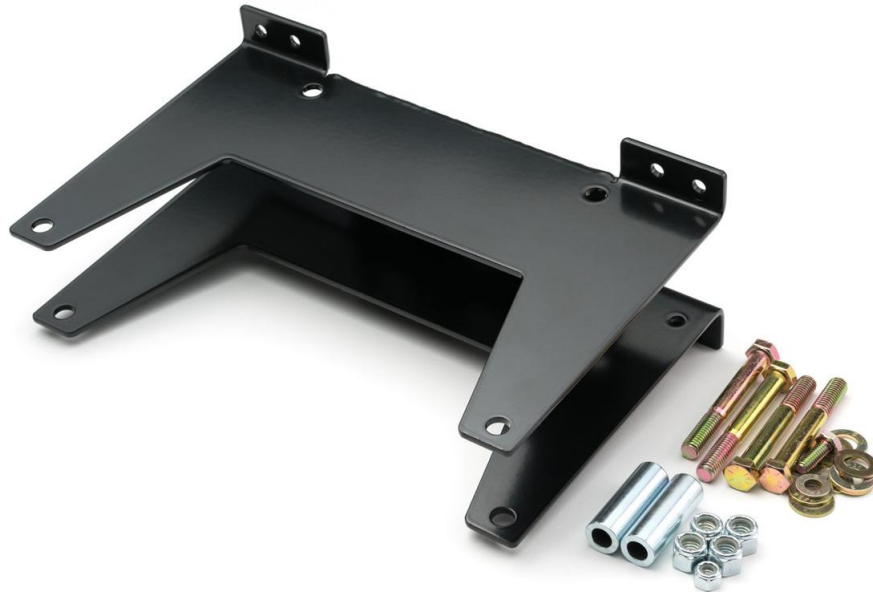
THE INFORMATION CONTAINED IN THIS DRAWING IS THE SOLE PROPERTY OF SYNERGY MFG. ANY REPRODUCTION IN PART OR WHOLE WITHOUT THE WRITTEN PERMISSION OF SYNERGY MFG IS PROHIBITED.

Revisions			
Rev.	Description	Date	Approved
A	Initial Release Per ECO 16-055	10/21/16	A.S.



JEEP JK 2012+ REAR AIR TANK MOUNT
Installation Instructions

Applications:
2012+ Jeep JK



TITLE:
**JEEP JK REAR AIR TANK MOUNT
INSTALLATION INSTRUCTIONS**

SIZE	DWG NO:	REV
A	4022-INST	A
SCALE: N/A		PAGE 1 OF 7



JEEP JK REAR AIR TANK MOUNT INSTALLATION INSTRUCTIONS

Thank you for purchasing the best aftermarket products available for your vehicle. We strongly feel that the parts you are about to install should meet or exceed your expectations for performance. Proper assembly is critical to the performance of these components and the vehicle as a whole. Please take the time to carefully read these instructions and familiarize yourself with the installation procedure before working on your vehicle. If you have any questions PLEASE contact Synergy Manufacturing BEFORE beginning installation. Thanks again for supporting Synergy – enjoy the performance benefits of the best aftermarket products available for your vehicle!

Synergy Manufacturing
Phone: (805) 242-0397
Email: support@synergymfg.com

Modifying or otherwise altering vehicle components may cause the vehicle to handle differently than originally designed. It is the driver's responsibility to familiarize themselves with the performance and handling characteristics of the modified vehicle. Vehicles with larger diameter than stock tires must be driven carefully and cannot be expected to perform as stock or meet OEM performance with regard to handling, braking or crash performance. Ensure all replacement components are compatible with vehicle capacities so as not to overload components, especially tires. It is up to the individual to ensure that the vehicle and all components are compatible with the intended vehicle use, including load ratings, road conditions, and driver abilities. Thorough and frequent vehicle inspections are recommended to ensure a safe and reliable state of readiness, especially after off-highway use.



Parts List

4022 JEEP JK REAR AIR TANK MOUNT		
QTY	Part Number	Description
1	4022-01	JK 2012+ REAR AIR TANK MOUNT
1	4022-HDW	JEEP JK REAR AIR TANK MOUNT HARDWARE KIT

General Notes

- These instructions are also available on our website: www.synergymfg.com. Check the website before you begin for any updated instructions and additional photos for your reference.
- The Synergy MFG JK Rear Air tank Mount utilizes the space above the rear axle of the vehicle. Space is limited in this area. We have verified the fit of the following tanks:
 - Viair 2 gallon air tank (P/N VIA-91022)
 - Accuair 3 gallon air tank (P/N AA-ENDO-T3-XXX)
- A 3” rear bump stop spacer is required to prevent interference between the rear axle and the air tank.

Tools Needed

- Basic hand tools:
 - Wrench and sockets – 10mm, 9/16” and 1/2”
 - Trim Tool, Flathead Screwdriver or similar tool

Estimated Installation Time

1-2 Hours

Instructions

1. Carefully jack up the rear of the vehicle until the rear wheels come off the ground. Lower vehicle frame onto at least 2 sturdy jackstands so that the rear wheels stay off the ground. It is important that the axle be 'drooped' out, with the shocks extended in order to have room to install the air tank.
2. Locate the rear cross member above the rear axle, just in front of the muffler. On vehicles with the factory rear E-Locker there will be a control relay on top of the cross member. If your vehicle has the relay, relocating the E-Locker relay will be necessary. Hardware is provided to re-mount the relay to the new bracket. Remove the factory relay and bracket. **See Figure 1.**



Figure 1. E-Locker Relay Removed from Cross Member

3. Using a trim tool or flat head screwdriver, remove the plastic grommet connecting the wiring harness to the cross member. **See Figure 2.**



Figure 2. Removing E-Locker Wiring Harness from Cross Member

4. Install the E-Locker relay on top of the 4022 Mount. There is one small hole in this corner of the Mount for this purpose. Orient the module with the connector facing the driver's side of the vehicle, as shown in **Figure 3**.



Figure 3. E-Locker Relay Installed on Top of 4022 Mount

5. If using an Accuair Tank, mount the Quick Release 'feet' to the 4022 mount as shown, with the set screws opposite the E-locker relay (set screws down, towards the ground). See **Figure 4**.

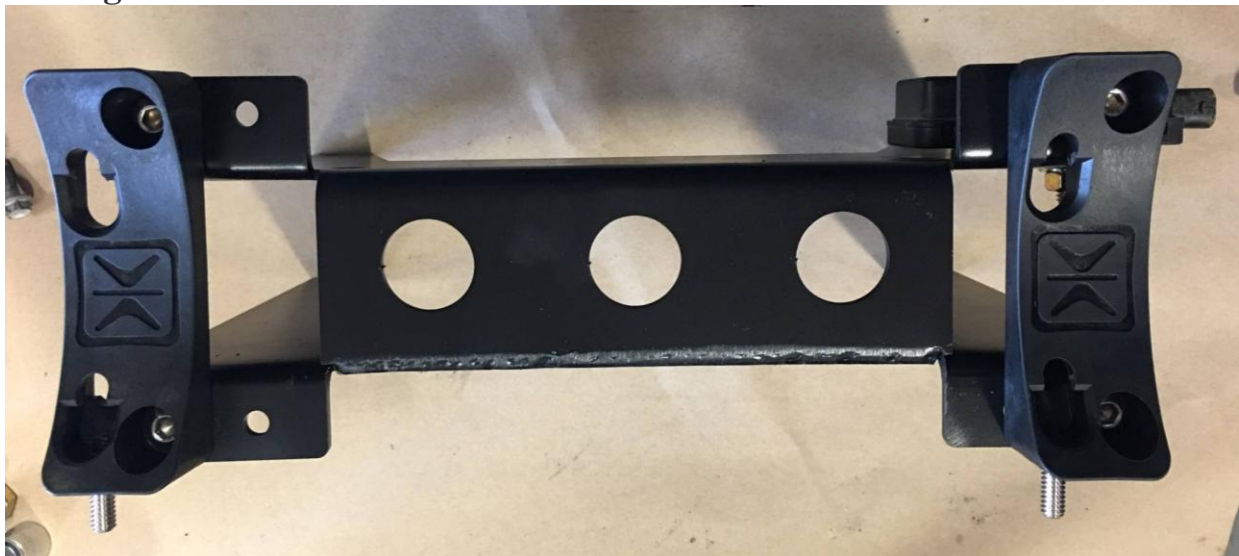


Figure 4. Accuair Quick Release Mounts Installed – Set Screws Facing Down

6. Position the 4022 Mount on the cross member as shown. The open end of the bracket goes towards the rear of the vehicle. Be sure there are no wires between the bracket and the cross member as these could get pinched or crushed when tightening the bolts. See **Figure 5**.



Figure 5. Installing Air Tank Mount

7. With bracket in place, install the hardware in the four locations on the bracket. The two spacers are installed on the backside of the bracket (towards the rear of the vehicle). Do not fully tighten hardware at this step. See **Figure 6**.

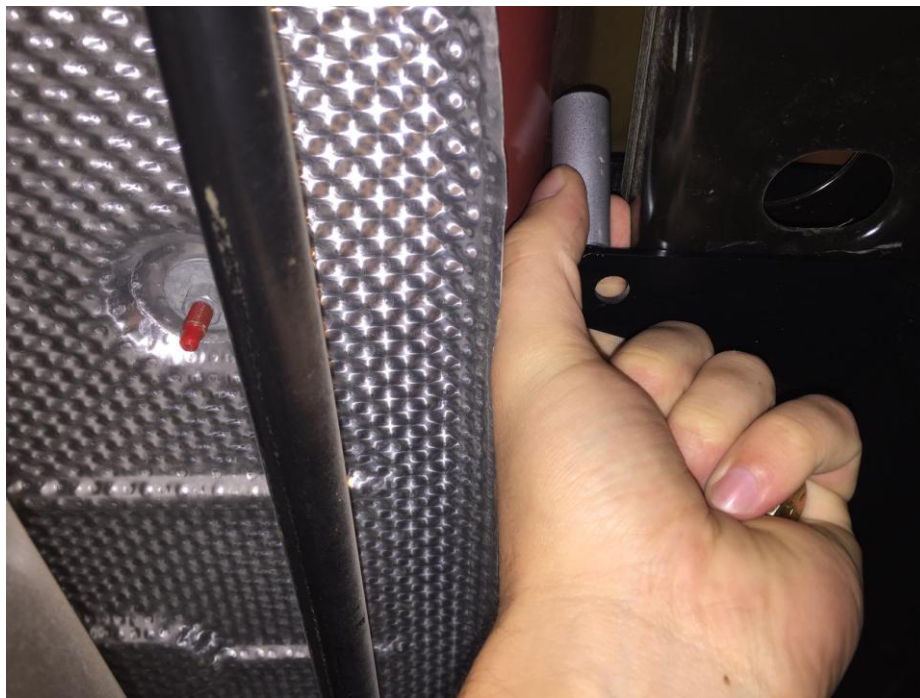


Figure 6. Installing Spacers

8. With bracket in place, install your air tank using the hardware provided by the tank manufacturer. With the tank in place, check the position of all fittings and lines and move the bracket as necessary to allow clearance. Once the tank is in the correct position, tighten all hardware. **See Figures 7 and 8.**



Figure 7. Viair Tank Mounted



Figure 8. Accuair Tank Mounted



Post-Installation Checklist

- Turn on your compressor and check for leaks using a spray bottle with soapy water.
- Check hardware after a few hundred miles.