



JL Wrangler Front Camera Installation

Section 1: Camera Installation

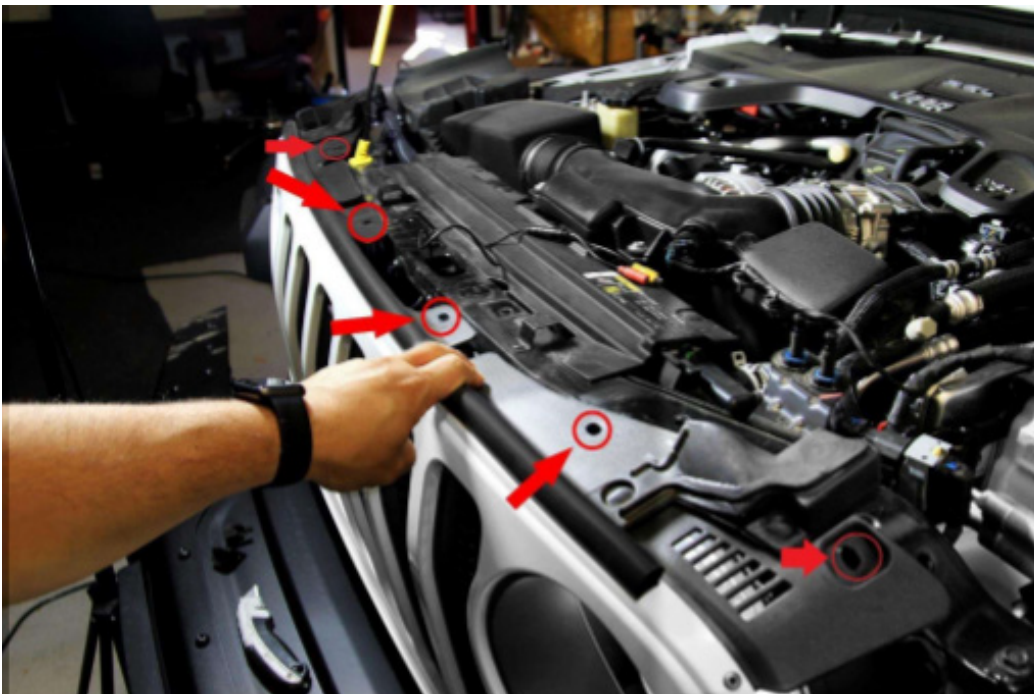
Step 1: Modify the grille to fit the camera.



Using a box cutter or wire snips, trim middle grill slating to fit camera bracket.

If you need to replace the grille insert due to a mistake in cutting or if returning to stock, the Mopar part number is 6DF50RXFAC and costs under \$15 from your local Jeep dealer or various online retailers.

Step 2: Install the bracket.



Remove the 5 clips holding the top of the grille to the core support. Once removed, you can lean the grille forward to aid in installation.



Insert the bottom tab into the grille, then snap the upper camera mount into place.

It is recommended to only lightly fit the mount into the grill and not snap it into place until the rest of the installation is complete to simplify aligning the camera. The camera WILL NEED to be loosened and rotated

Step 3: Connect the camera wiring.



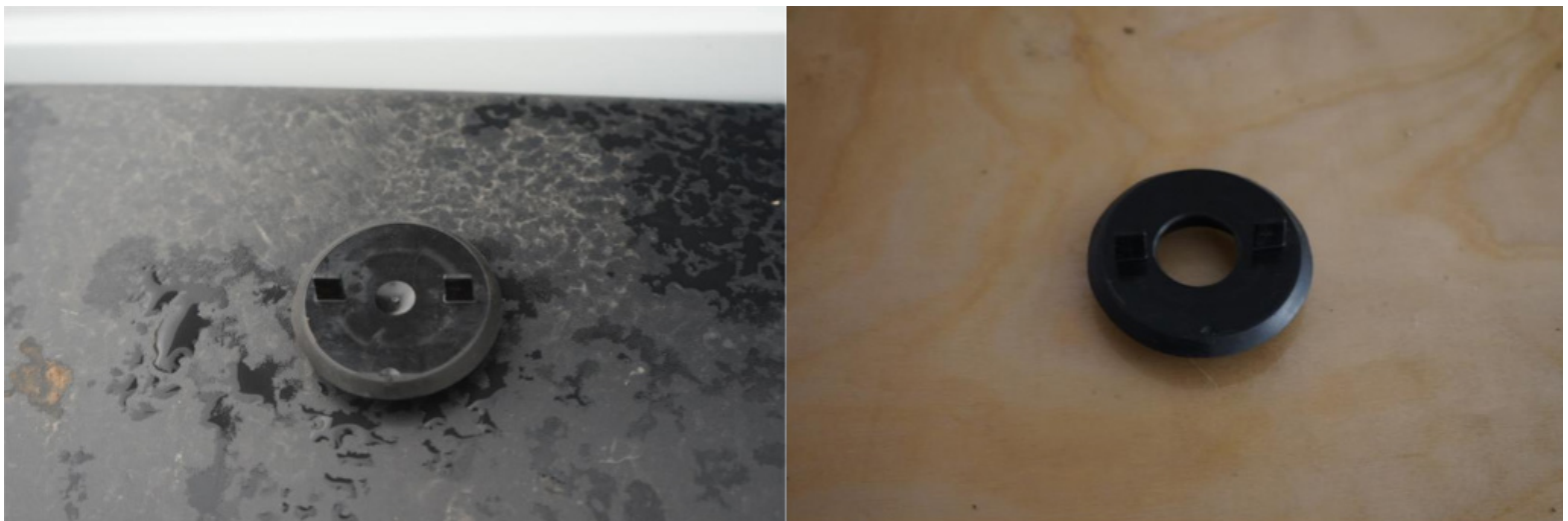
Place the included shrink tubing over one side of the camera connectors, then plug in the mating connector, making sure to cover both connectors with the heat shrink. Center the heat shrink, then use a lighter or heat gun to constrict the tubing over the connectors.

Step 4: Route the wires.



Use this as a guide for how to route the included wiring harness.

Step 4a: Modify the clutch plug.



Remove clutch plug located on the firewall below the brake booster on the driver side. Using a 1/2" drill bit, drill a hole in the center of the plug to route the wiring into the vehicle. It is recommended to use a grommet or silicone to seal the wiring in the plug.

Step 4b: Run the camera wiring.



Using the wire routing diagram, run the camera wiring down the front of the vehicle and against the fender. The rear washer nozzle tubing hold down can be used to hold the camera wiring also. Run the wiring through the clutch plug and into the vehicle. Route under the dash and through the Push-to-Start wiring hole.

NOTE: It will be easier to first run the wiring through the firewall from inside the vehicle. Make sure to run wiring through clutch plug before running to the grill.

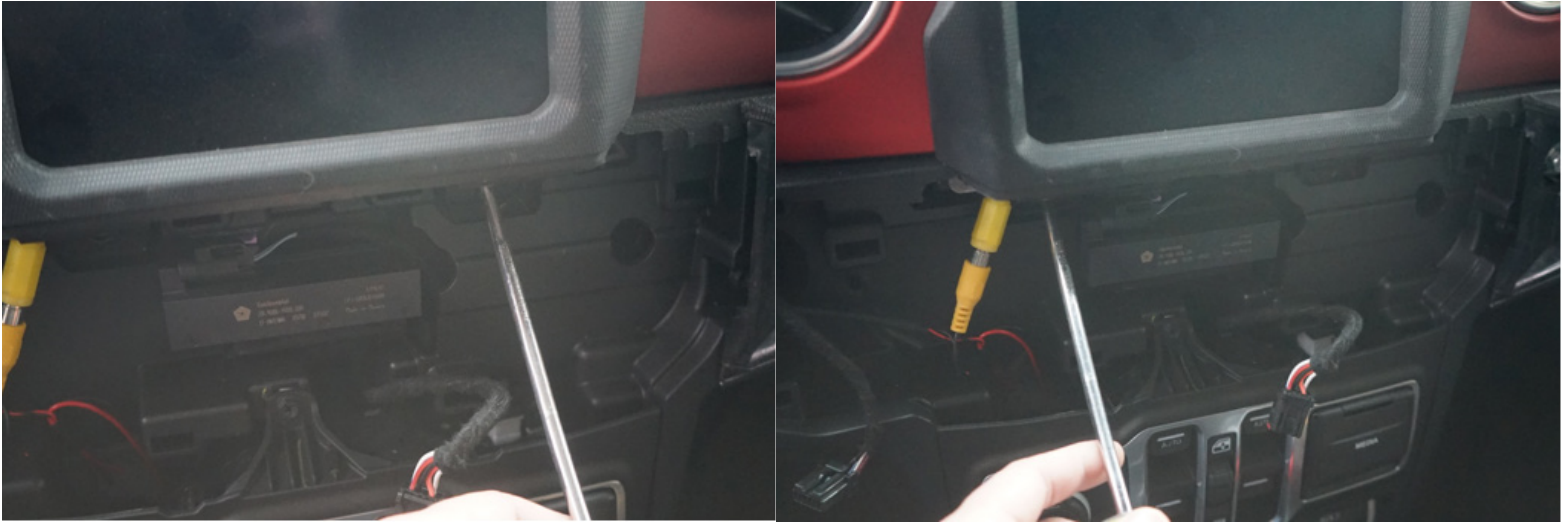
Section 2: Wiring Video Input to Radio

Step 1: Remove the AC control panel.



Using a trim pry stick, carefully release the tabs on either side of the center dash AC Controls. Once Released, unplug the two connectors on the back.

Step 2: Remove the radio bezel.



Using a Phillips head screwdriver, remove two screws holding radio bezel to dash.



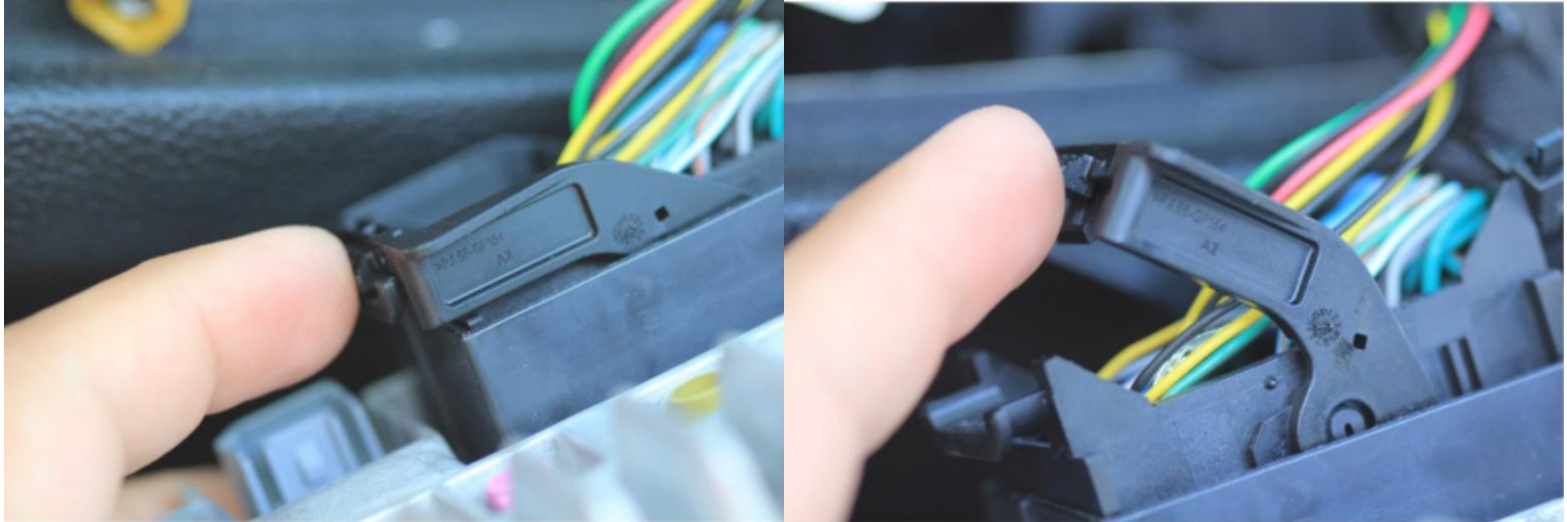
Once screws are removed, use a trim stick to remove bezel from dash.

Step 3: Remove the radio.

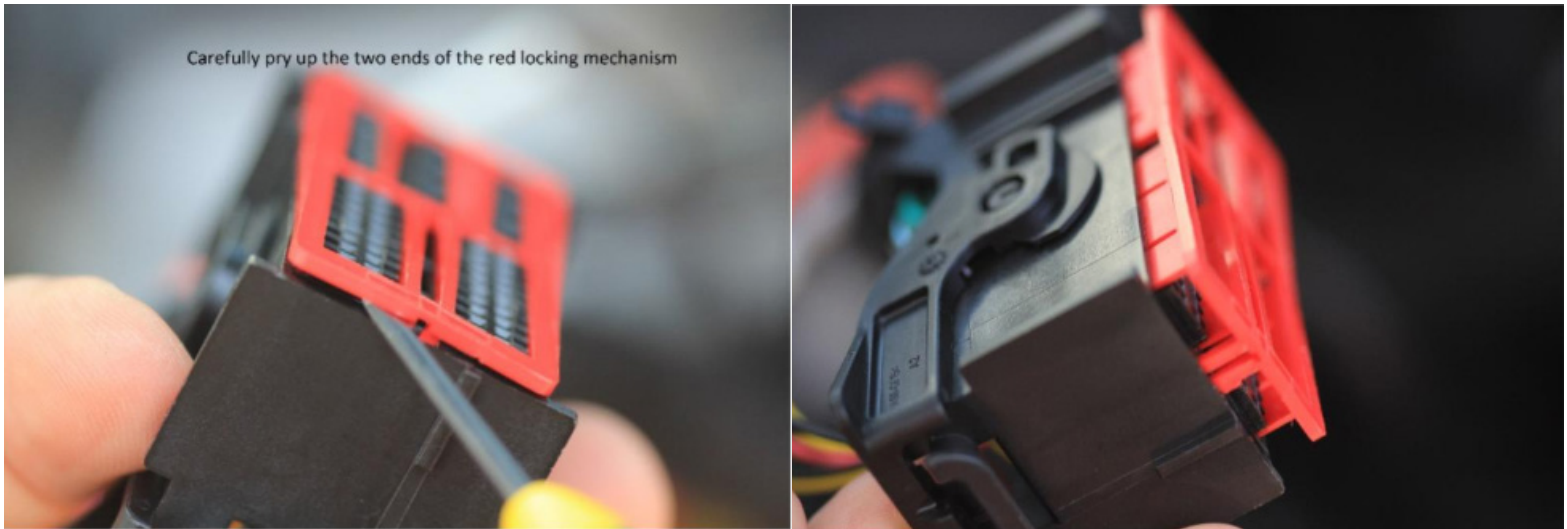


Using a phillips head screwdriver remove the 4 screws holding the radio into the dash.

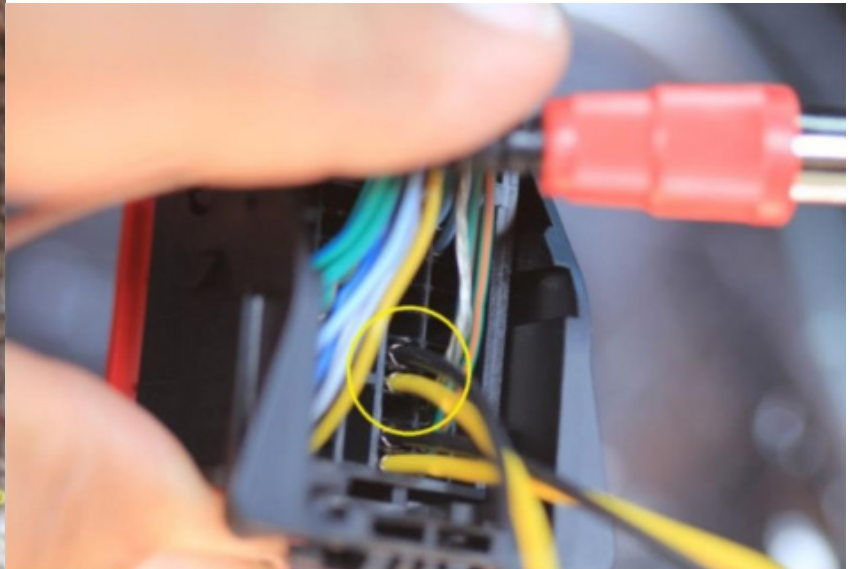
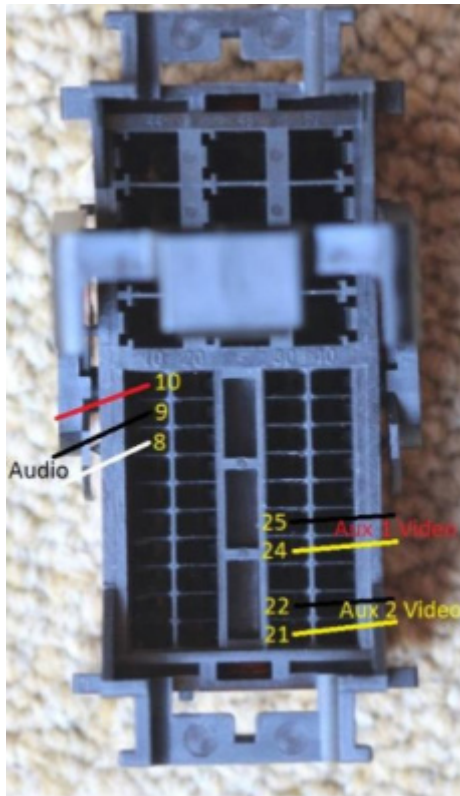
Step 4: Connect the camera.



Unlatch the large radio connector arm and raise the arm to release the connector.



Using a small flat head screwdriver, raise red terminal locking plate off the main radio connector.



Once the cover is raised, insert the pins of the supplied RCA cable into their proper slots.

For 2018/2019, this is Yellow in pin 24, Black in 25.

For 2020, Yellow in 21, Black in 22.

Some 2019's that have had a Uconnect update may use the 2020 pinout.

They should snap into place.

Once installed, re-seat the red terminal locking plate.

If you need to move a pin, you can insert a paperclip or pin into the face of the connector in the hole next to the pin you want to remove, which will release the lock. This needs to be done with the red locking plate raised.

Step 5: Connect the EZ Power harness.



Unplug the driver side cigar lighter plug.

Plug the inline EZ Power harness in between.

At this time, also connect the RCA connector to the connector you just pinned into the radio connector.

Section 3: Activate the Cargo Cam Input

Step 1: Using the Tazer JL EVIC menu, navigate to RADIO > CARGOCAM and change CARGOCAM = NO to YES.

Step 2: Select Full Reboot from the main menu.

Step 3: Perform 2 sleep cycles (vehicle locked and keys away from the vehicle for 5 minutes each time).

Step 4: Turn on the Cargo Camera from the Controls section of the radio menu.

Step 5: Align the camera manually to make sure it's level.

Step 6: Once level, snap the camera into place. Press from the bottom directly UP to disengage the bottom clip.



To align the camera, loosen the bezel (left) with your fingers and rotate the camera (right) from its body which is accessible from the back of the mount (center). They are shown here disassembled for clarification.

Z Automotive cannot be held responsible misuse or consequential damages.

If you are in doubt, email support@zautotech.com.

Please be aware that modifying your vehicle in any way can affect your vehicle's warranty, longevity, handling, etc.

Please use with caution, and AT YOUR OWN RISK.

USING THE LIGHT SHOW FEATURE ON PUBLIC ROADS: IMPERSONATING A POLICE OFFICER IS A FELONY. LIGHT SHOW IS INTENDED FOR CAR SHOW/TRACK/OFF ROAD USE ONLY.

Z Automotive is in no way affiliated with FCA.